

To _____

No. A237-040403N-01

Date 3rd Apr. '04

Type No.
ERAC3

Data Sheet

EGSM900 Rx SAW Filter	
Application	: Rx Filter for EGSM900
Center Frequency	: 942.5MHz
Size	: 2.0x1.4mm, 5pin-layout
Impedance	: 50-150ohms unbalance-balance
Part No.	: EFCH942MTCA7

Issued *S. Tsuzuki*
Check *K. Nishimura*

CIRCUIT COMPONENTS BUSINESS UNIT
MATSUSHITA ELECTRONIC COMPONENTS CO.,LTD
KADOMA, OSAKA, JAPAN

EGSM900 Rx SAW Filter

----- Unbalanced input and balanced output -----

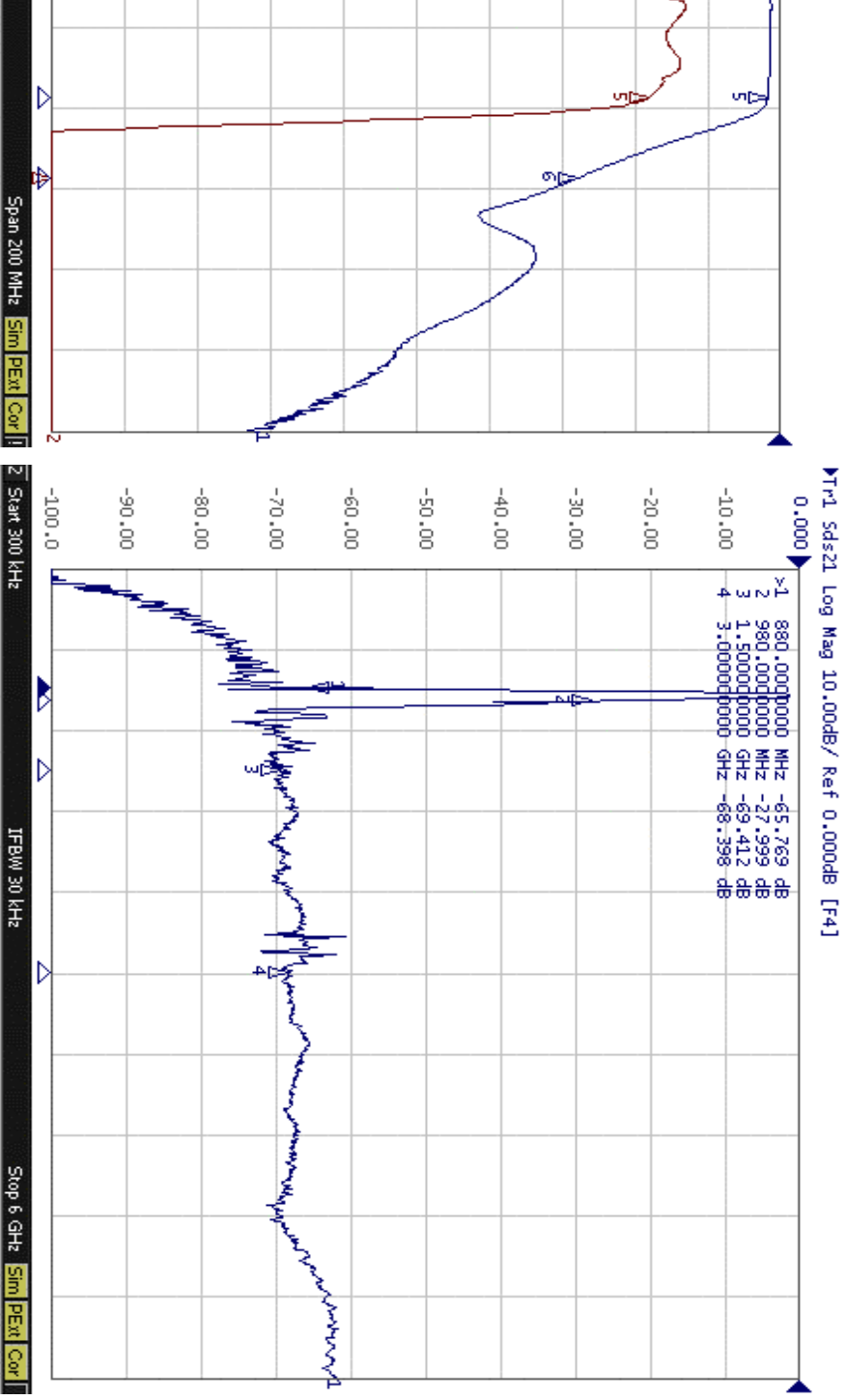
Part No. :

Design No. : T942TGD

Parameter		Frequency	Your request			Our preliminary spec.			Unit
			Min.	Typ.	Max.	Min.	Typ.	Max.	
Passband			925 ... 960			925 ... 960			MHz
Insertion loss		925 ... 960MHz					1.8	2.5	dB
Ripple in passband		925 ... 960MHz					0.5	1.5	dB
Amplitude imbalance		925 ... 960MHz				-0.5	-0.2 +0.1	+0.5	dB
Phase imbalance		925 ... 960MHz				-5	-1 +1	+5	deg.
Attenuation	Att1	DC ... 880MHz				50	63		dB
	Att2	880 ... 905MHz				25	34		dB
	Att3	905 ... 915MHz				18	22		dB
	Att4	980 ... 1500MHz				23	28		dB
	Att5	1500 ... 3000MHz				40	60		dB
	Att6	3000 ... 6000MHz				35	60		dB
VSWR	Input	925 ... 960MHz					1.7	2.0	
	Output	925 ... 960MHz					1.6	2.0	
Input impedance (Single Ended)						50			Ohm
Output impedance (Differential)						150 // 82 nH			Ohm
Maximum drive level								13	dBm
Operating temperature						-10		+80	deg. C
Storage temperature						-40		+85	deg. C

EGSM900 Rx SAW Filter

----- Unbalanced input and balanced output -----

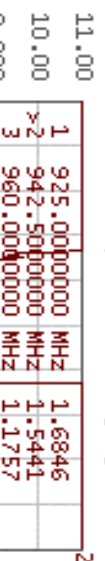


EGSM900 Rx SAW Filter

----- Unbalanced input and balanced output -----



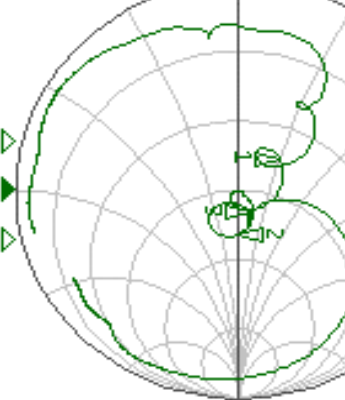
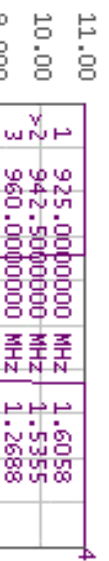
Tr1 Smith (R+jX) Scale 1.000U [F4]



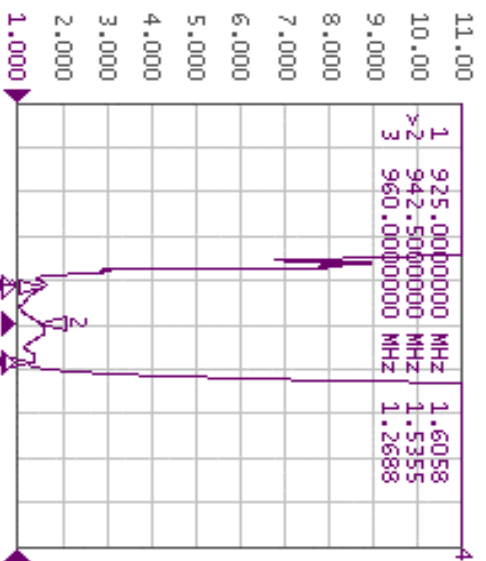
Tr2 Smith (R+jX) Scale 1.000U [F4]



Tr2 Ssd11 SWR 1.000/ Ref 1.000 [F4]



Tr4 Sdd22 SWR 1.000/ Ref 1.000 [F4]



42.5 MHz

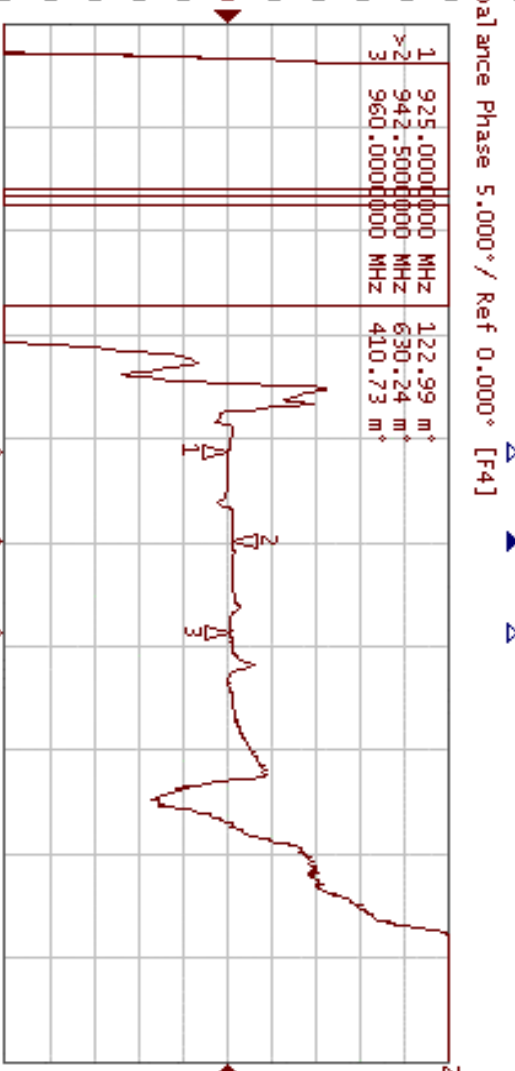
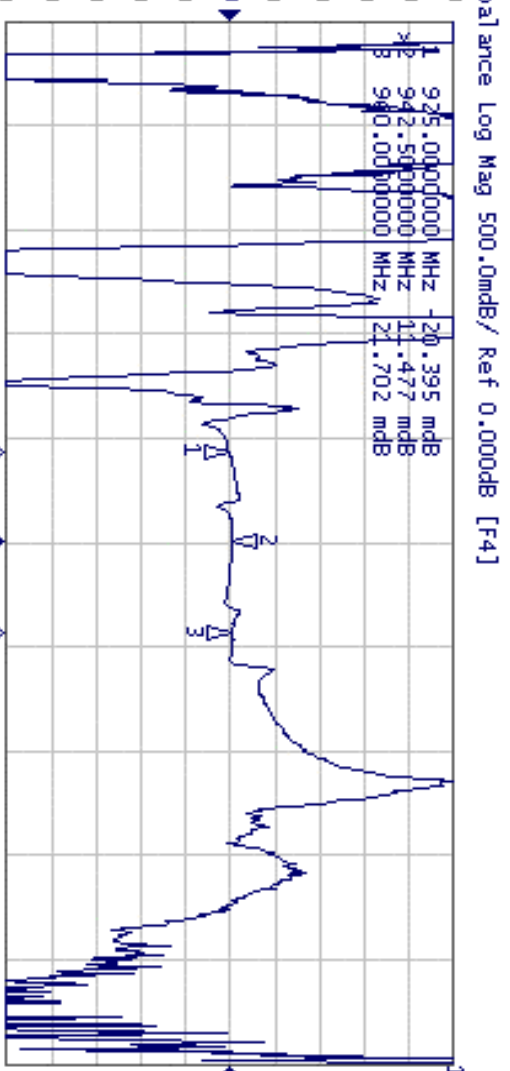
IFBW 30 kHz

Span 200 MHz

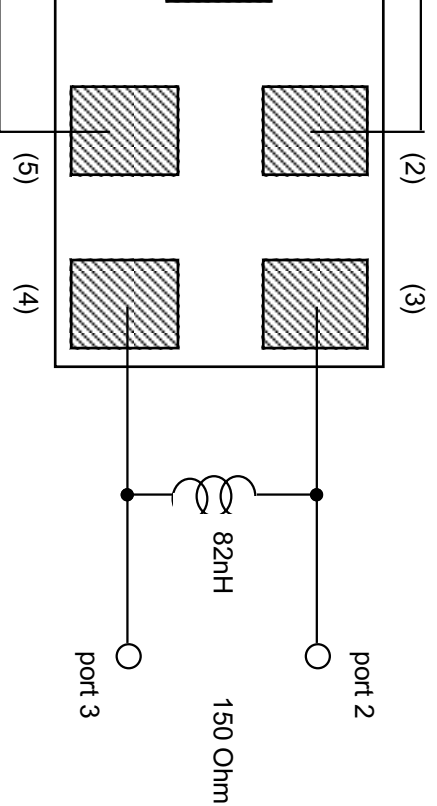
Sim Pent Cor

EGSM900 Rx SAW Filter

----- Unbalanced input and balanced output -----



UNLESS OTHERWISE SPECIFIED	
BASIC DIMENSIONS	TOLERANCE
UP TO	INCL
TO	INCL
TO	INCL
TO	INCL
ABOVE	



Input impedance : 50 Ohm (Single ended)
 Output Impedance : 150 Ohm (Differential)

ISSUE	REVISIONS	DATE
MATERIAL	FINISH	SCALE
DESIGN		
DRAW		
CHECK		
APPROVAL		
DRAWING NO.		

NAME	TYPE NO.
SAW Filter	

CERAMIC BUSINESS UNIT, LCR DEVICE COMPANY
 MATSUSHITA ELECTRONIC COMPONENTS CO.,LTD.
 KADOMA, OSAKA, JAPAN

Fig. 2

Looking for pricing, stock, or lifecycle information?

Click below to explore more details on WIN SOURCE:

- ⊖ [View EFCH942MTCA7](#) on WIN SOURCE
- ⊖ [Panasonic](#) Information

Optimize Your Supply Chain with WIN SOURCE Solutions

- ✓ Global Sourcing Solution
- ✓ Obsolete Management
- ✓ Cost Control Management
- ✓ Shortage Management
- ✓ Alternative Solution
- ✓ Excess Inventory Management