

To \_\_\_\_\_

No. A220-040403N-01

Date 3rd Apr. '04

Type No.  
**CRAC4**

Data Sheet

<b>GSM850 Rx SAW Filter</b>	
Application	: Rx Filter for GSM850
Center Frequency	: 881.5MHz
Size	: 2.0x1.4mm, 5pin-layout
Impedance	: 50-150ohms unbalance-balance
Part No.	: EFCH881MTCA1

Issued S. Tsuzuki

Check K. Nishimura

CIRCUIT COMPONENTS BUSINESS UNIT

**MATSUSHITA ELECTRONIC COMPONENTS CO.,LTD**

KADOMA, OSAKA, JAPAN

**GSM850/CDMA800 Rx SAW Filter**

----- Unbalanced input and balanced output -----

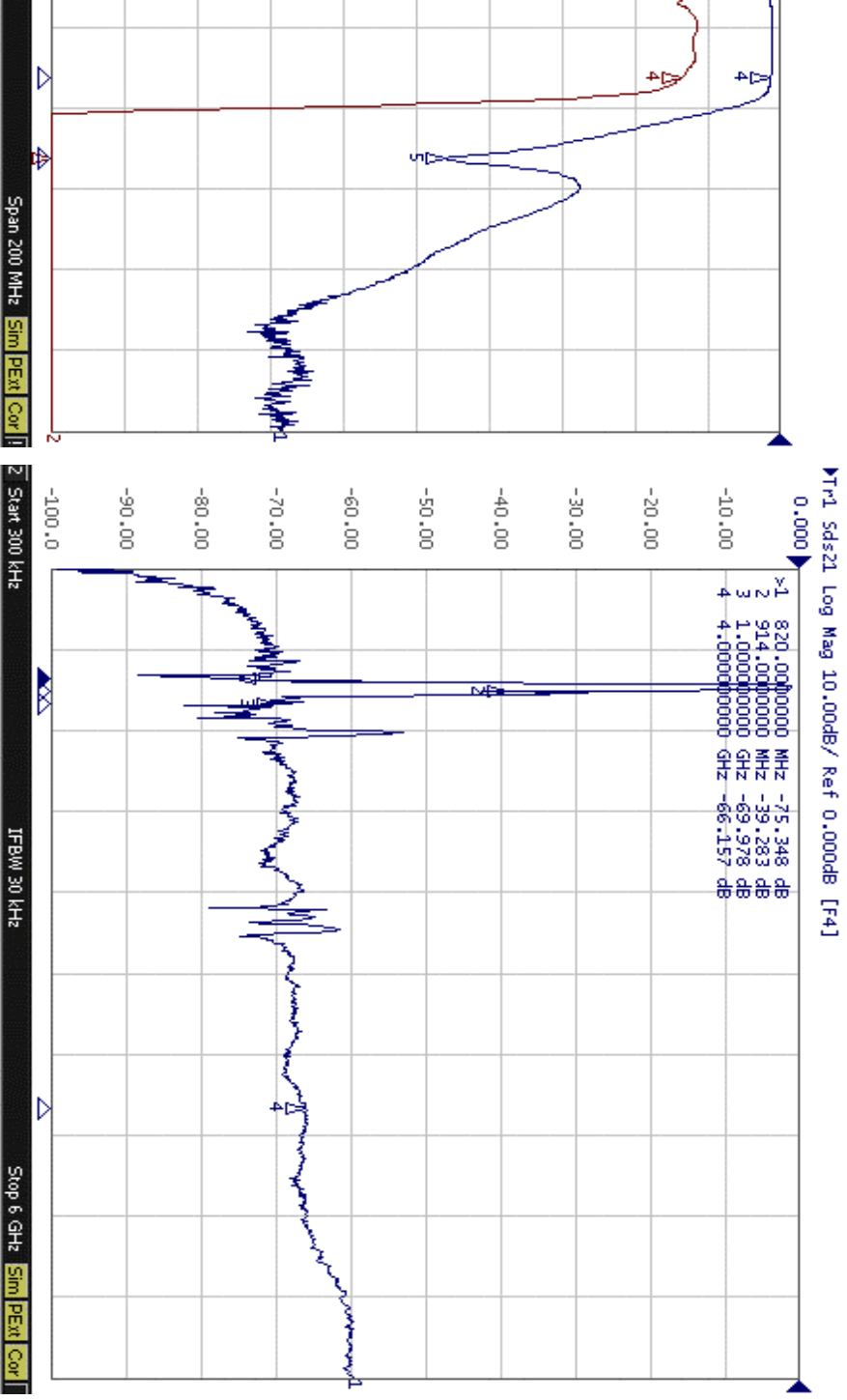
Part No. :

Design No. : T881P6

Parameter		Frequency	Your request			Our preliminary spec.			Unit
			Min.	Typ.	Max.	Min.	Typ.	Max.	
Passband			869 ... 894			869 ... 894			MHz
Insertion loss		869 ... 894MHz					1.4	2.0	dB
Ripple in passband		869 ... 894MHz					0.3	1.0	dB
Amplitude imbalance		869 ... 894MHz				-1.0	-0.5 +0.2	+1.0	dB
Phase imbalance		869 ... 894MHz				-10	-4 +1	+10	deg.
Attenuation	Att1	DC ... 820MHz				45	65		dB
	Att2	820 ... 849MHz				35	46		dB
	Att3	914 ... 1000MHz				23	28		dB
	Att4	1000 ... 4000MHz				25	53		dB
	Att5	4000 ... 6000MHz				20	58		dB
VSWR	Input	869 ... 894MHz					1.4	1.8	
	Output	869 ... 894MHz					1.4	1.8	
Input impedance (Single Ended)						50			Ohm
Output impedance (Differential)						150			Ohm
Maximum drive level								13	dBm
Operating temperature						-10		+80	deg. C
Storage temperature						-40		+85	deg. C

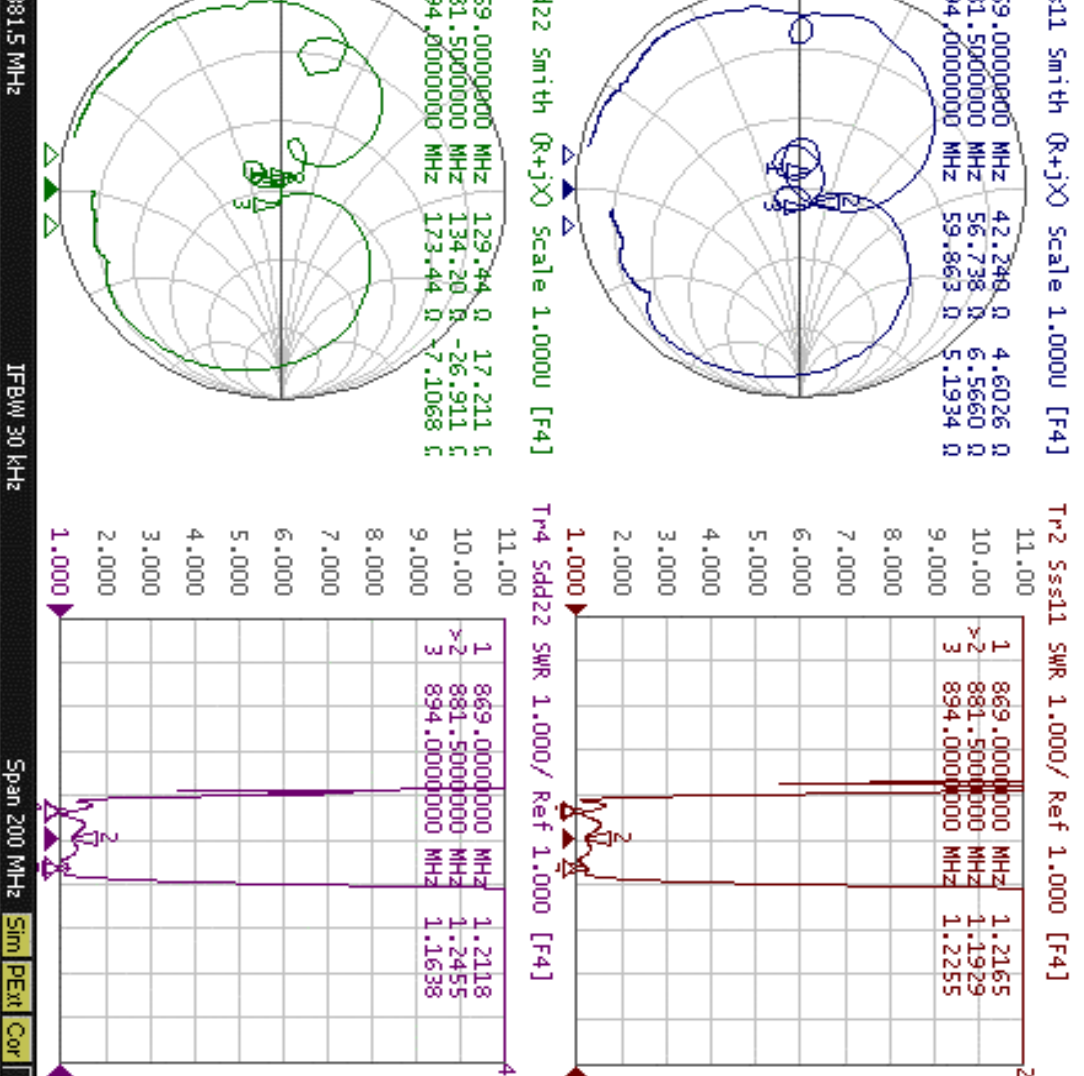
### GSM850/CDMA800 Rx SAW Filter

----- Unbalanced input and balanced output -----



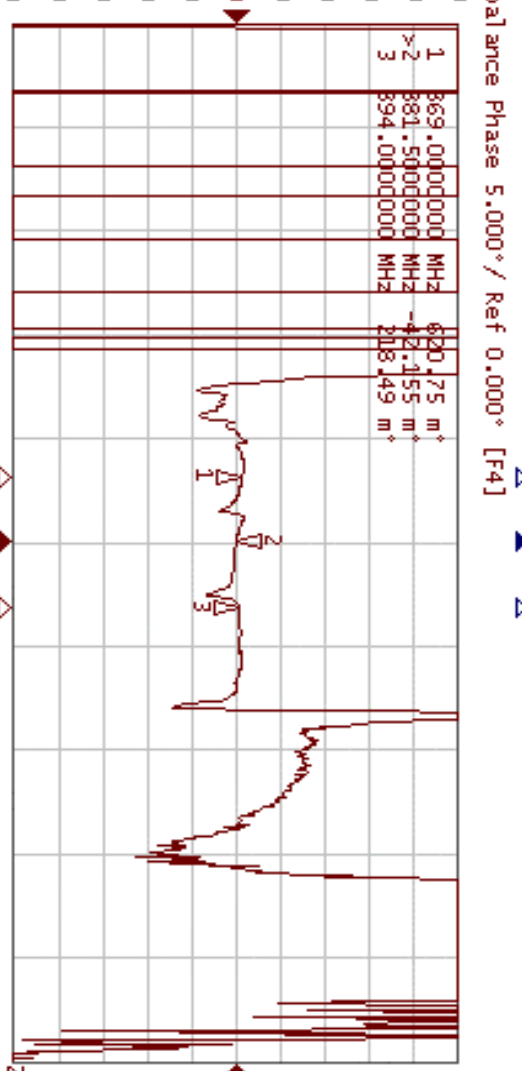
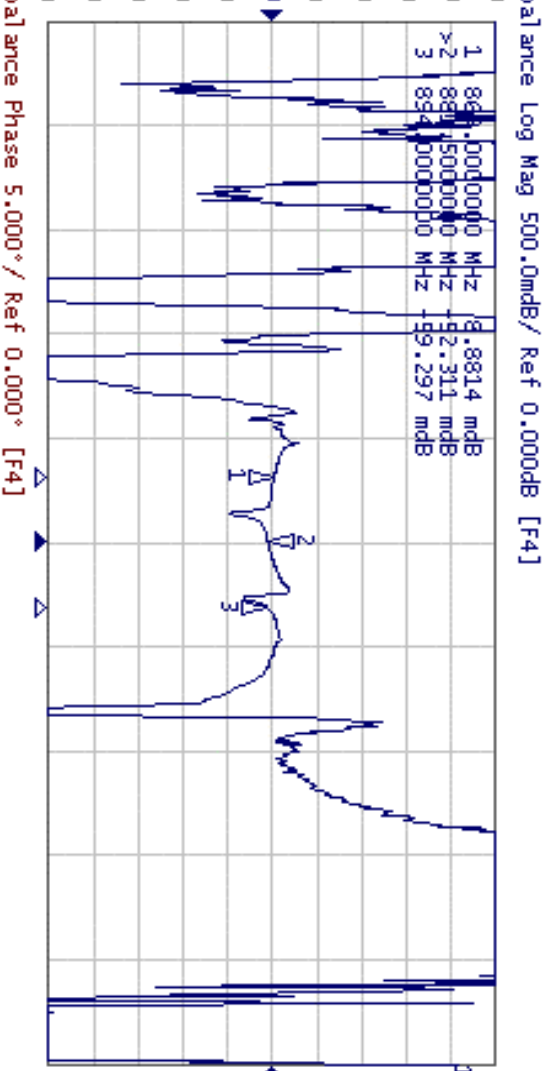
### GSM850/CDMA800 Rx SAW Filter

----- Unbalanced input and balanced output -----



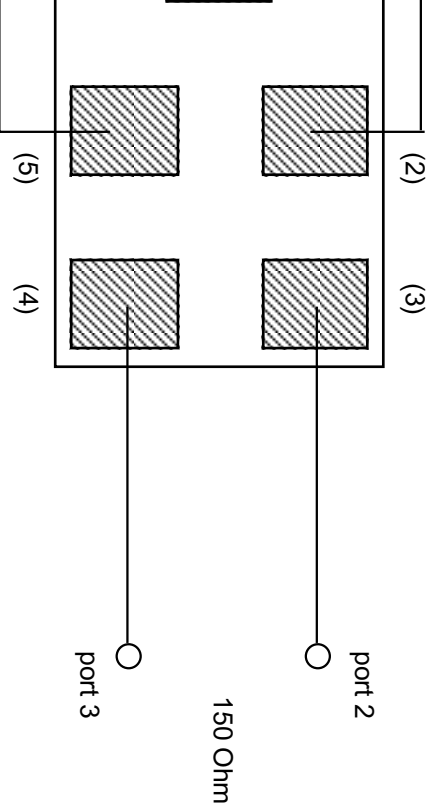
**GSM850/CDMA800 Rx SAW Filter**

----- Unbalanced input and balanced output -----





UNLESS OTHERWISE SPECIFIED	
BASIC DIMENSIONS	TOLERANCE
UP TO	INCL
TO	INCL
TO	INCL
TO	INCL
ABOVE	



Input impedance : 50 Ohm ( Single ended )  
 Output Impedance : 150 Ohm ( Differential )

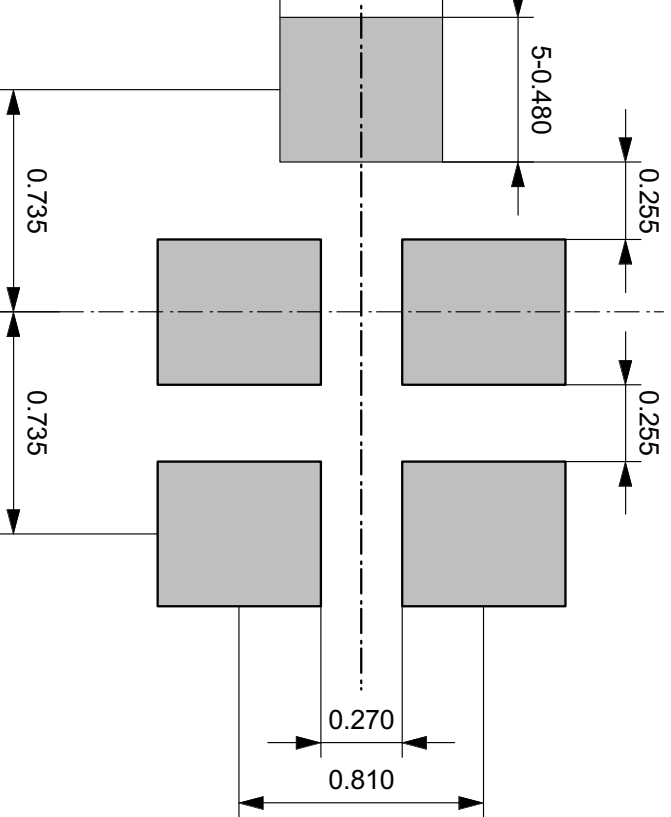
ISSUE	REVISIONS	DATE
MATERIAL	FINISH	SCALE
DESIGN		
DRAW		
CHECK		
APPROVAL		
DRAWING NO.		

NAME	TYPE NO.
SAW Filter	

CERAMIC BUSINESS UNIT, LCR DEVICE COMPANY  
 MATSUSHITA ELECTRONIC COMPONENTS CO.,LTD.  
 KADOMA, OSAKA, JAPAN

Fig. 2

UNLESS OTHERWISE SPECIFIED	
BASIC DIMENSIONS	TOLERANCE
UP TO INCL	
TO INCL	
TO INCL	
TO INCL	
ABOVE	



**Note :**  
 The design manufacturing process, and Specification of this device are subject to change without notice.

ISSUE	REVISIONS		SCALE	DATE
	MATERIAL	FINISH		
DESIGN				
DRAW				
CHECK				
APPROVAL				
DRAWING NO.				



NAME  
 SAW Filter

TYPE NO.

CERAMIC BUSINESS UNIT, LCR DEVICE COMPANY  
 MATSUSHITA ELECTRONIC COMPONENTS CO.,LTD.  
 KADOMA, OSAKA, JAPAN

## Looking for pricing, stock, or lifecycle information?

Click below to explore more details on WIN SOURCE:

-  [View EFCH881MTCA1](#) on WIN SOURCE
-  [Panasonic](#) Information

## Optimize Your Supply Chain with WIN SOURCE Solutions

-  Global Sourcing Solution
-  Obsolete Management
-  Cost Control Management
-  Shortage Management
-  Alternative Solution
-  Excess Inventory Management