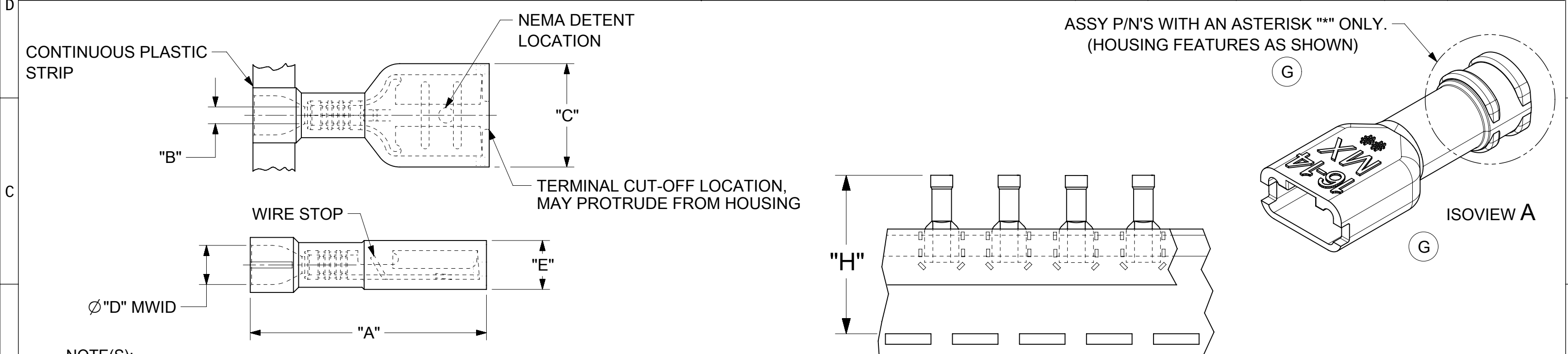




THE DATASHEET OF
19003-0071



10	9	8	7	6	5	4	3	2	1						
LOOSE PIECE MATERIAL NUMBER	LOOSE PIECE ENGRNG NUMBER	CONTINUOUS STRIP MATERIAL NUMBER	CONTINUOUS STRIP ENGRNG NUMBER	MYLAR TAPE MATERIAL NUMBER	MYLAR TAPE ENGRNG NUMBER	WIRE RANGE AWG	FITS MALE TAB SIZE	INSULATION COLOR	STOCK THICK	"A" MAX.	"B" MIN.	"C" MAX.	"D" MWID	"E" MAX.	"H" ±.02(0.5)
190030071	M-2212	190030106	M-2212C	190030073	M-2212T	26-24	.250x.032 (6.35x0.81)	YELLOW	.016/0.41	.86/21.8	.028/0.71	.38/9.7	.075/1.90	.18/4.6	1.42/35.9
190030064	M-2210	190030103	M-2210C	190030067	M-2210T	26-24	.187x.020 (4.75x0.51)	YELLOW	.016/0.41	.78/19.8	.028/0.71	.32/8.1	.075/1.90	.16/4.1	1.38/34.9
190030068	M-2211	190030104	M-2211C	190030070	M-2211T	26-24	.187x.032 (4.75x0.81)	DK YELLOW	.016/0.41	.78/19.8	.028/0.71	.32/8.1	.075/1.90	.16/4.1	1.38/34.9
190030001	AA-2201	190030105	AA-2201C	190030003	AA-2201T	22-18	.250x.032 (6.35x0.81)	SALMON	.016/0.41	.86/21.8	.056/1.42	.38/9.7	.135/3.43	.18/4.6	1.42/35.9
190030036	AA-2213	190030109	AA-2213C	190030074	AA-2213T	22-18	.205x.020 (5.21x0.51)	SALMON	.016/0.41	.78/19.8	.056/1.42	.32/8.1	.135/3.43	.16/4.1	1.38/34.9
190030038	AA-2214	190030110	AA-2214C	190030075	AA-2214T	22-18	.205x.032 (5.21x0.81)	PINK	.016/0.41	.78/19.8	.056/1.42	.32/8.1	.135/3.43	.16/4.1	1.38/34.9
190030011	AA-2202	190030107	AA-2202C	190030013	AA-2202T	22-18	.187x.020 (4.75x0.51)	SALMON	.016/0.41	.78/19.8	.056/1.42	.32/8.1	.135/3.43	.16/4.1	1.38/34.9
190030017	AA-2203	190030108	AA-2203C	190030020	AA-2203T	22-18	.187x.032 (4.75x0.81)	PINK	.016/0.41	.78/19.8	.056/1.42	.32/8.1	.135/3.43	.16/4.1	1.38/34.9
190030024	AA-2204	190030097	AA-2204C	190030026	AA-2204T	22-18	.110x.020 (2.79x0.51)	SALMON	.012/0.30	.78/19.8	.056/1.42	.23/5.9	.135/3.43	.15/3.8	1.39/35.3
190030030	AA-2205	190030098	AA-2205C	190030032	AA-2205T	22-18	.110x.032 (2.79x0.81)	PINK	.012/0.30	.78/19.8	.056/1.42	.23/5.9	.135/3.43	.15/3.8	1.39/35.3
190030040	BB-2206	190030041	BB-2206C	190030042	BB-2206T	16-14	.250x.032 (6.35x0.81)	BLUE	.016/0.41	.86/21.8	.079/2.00	.38/9.7	.160/4.06	.18/4.6	1.42/35.9
G 190030062*	BB-2215	G 190030085*	BB-2215C	G 190030077*	BB-2215T	16-14	.205x.020 (5.21x0.51)	BLUE	.016/0.41	.78/19.8	.079/2.00	.32/8.1	.160/4.06	.17/4.3	1.41/35.7
190030063*	BB-2216	190030086*	BB-2216C	190030078*	BB-2216T	16-14	.205x.032 (5.21x0.81)	AQUA	.016/0.41	.78/19.8	.079/2.00	.32/8.1	.160/4.06	.17/4.3	1.41/35.7
190030050*	BB-2207	190030051*	BB-2207C	190030052*	BB-2207T	16-14	.187x.020 (4.75x0.51)	BLUE	.016/0.41	.78/19.8	.079/2.00	.32/8.1	.160/4.06	.17/4.3	1.41/35.7
G 190030056*	BB-2208	G 190030057*	BB-2208C	G 190030058*	BB-2208T	16-14	.187x.032 (4.75x0.81)	AQUA	.016/0.41	.78/19.8	.079/2.00	.32/8.1	.160/4.06	.17/4.3	1.41/35.7
196060002	C-2293	196060001	C-2293C	196060003	C-2293T	12-10	.250x.032 (6.35x0.81)	YELLOW	.018/0.46	1.03/26.1	.117/2.97	.38/9.7	.235/5.97	.22/5.6	1.53/38.9



ASSY P/N'S WITH AN ASTERISK "*" ONLY.
(HOUSING FEATURES AS SHOWN)

- NOTE(S):
- MATERIAL:
 - TERMINAL: BRASS
 - PLATING: ELETRO-TIN
 - FERRULE: BRASS
 - PLATING: ELETRO-TIN
 - INSULATION: NYLON 6/6 94V-2
 - COLOR: SEE CHART
 - MWID = MAXIMUM WIRE INSULATION DIAMETER
 - PARTS ARE RoHS COMPLIANT.

SYMBOLS	THIS DRAWING CONTAINS INFORMATION THAT IS PROPRIETARY TO MOLEX ELECTRONIC TECHNOLOGIES, LLC AND SHOULD NOT BE USED WITHOUT WRITTEN PERMISSION	
	DIMENSION UNITS	SCALE
▽ = 0	IN/MM	NTS
▽ = 0	GENERAL TOLERANCES (UNLESS SPECIFIED)	
▽ = 0	MM	INCH
▽ = 0	4 PLACES ±	±
▽ = 0	3 PLACES ±	±
▽ = 0	2 PLACES ±	±
▽ = 0	1 PLACE ±	±
▽ = 0	0 PLACES ±	±
⊠ = 0	ANGULAR TOL ± °	
■ = 0	DRAFT WHERE APPLICABLE MUST REMAIN WITHIN DIMENSIONS	
▽ = 0	THIRD ANGLE PROJECTION	DRAWING
	19003	B-SIZE
	2019/04/11	2019/04/22
	2019/04/22	2019/04/22
	2002/04/02	2002/04/03
	SD-19003-005	PSD 001 G
	SEE CHART	GENERAL MARKET
	1 OF 1	

Looking for pricing, stock, or lifecycle information?

Click below to explore more details on WIN SOURCE:

 [View 19003-0071 on WIN SOURCE](#)

 [Molex, LLC Information](#)

Optimize Your Supply Chain with WIN SOURCE Solutions

-  Global Sourcing Solution
-  Obsolete Management
-  Cost Control Management
-  Shortage Management
-  Alternative Solution
-  Excess Inventory Management