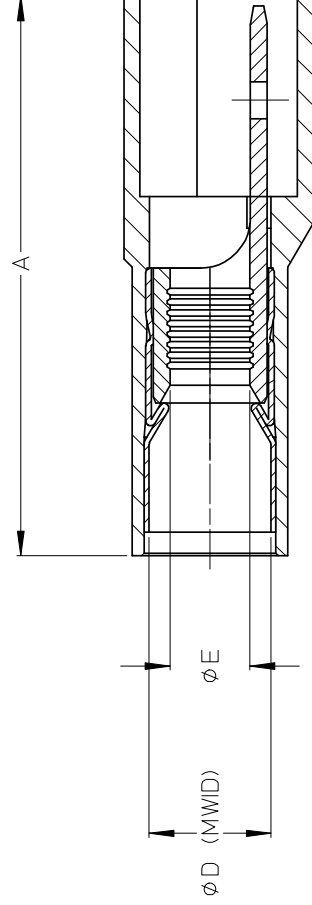
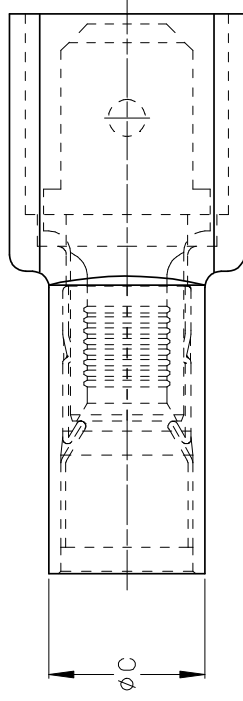




**THE DATASHEET OF
19001-0010**



10	9	8	7	6	5	4
ASSEMBLY NUMBER		TAPE NUMBER		ITEM DESCRIPTION		
MATERIAL NUMBER	ENGINEERING NUMBER	MATERIAL NUMBER	TAPE ENG NUMBER	COLOR	WIRE GAUGE	'A' MAX
190010010	C-5264	190010011	C-5264T	YELLOW	12-10 AWG (3.09-5.01mm ²)	1.08/27.4





(B) NOTES:

1. TERMINAL MATERIAL: BRASS
2. TERMINAL PLATING: ZINC CHROMATE
3. HOUSING: 6/6 NYLON
4. MWID: MAXIMUM WIRE INSULATION DIAMETER
5. TAB DIMENSIONS CONFORM TO UL310 SPECIFICATIONS.
6. ASSEMBLY IS ROHS COMPLIANT

REDRAW, MATERIALS		EC NO: ETC2007-0081		B	
DRWN:EHILE		2008/01/28		REV	
CHKD:JMACEIL		2008/01/28		DESCRIPTION	
APPR:JMACEIL		2008/02/13			
QUALITY SYMBOLS		GENERAL TOLERANCES (UNLESS SPECIFIED)		DIMENSION IN/IN	
$\blacktriangle = 0$ $\triangle = 0$		mm INCH 4 PLACES \pm --- \pm --- 3 PLACES \pm 0.005 \pm .005 2 PLACES \pm 0.13 \pm .01 1 PLACE \pm 0.25 \pm --- ANGULAR \pm 1/2°		DRAWN BY ASAYDEH CHECKED BY REDEROSS APPROVED BY REDEROSS MATERIAL NO. SEE CH SIZE THIS DR B INCORPOR	
DRAFT WHERE APPLICABLE MUST REMAIN WITHIN DIMENSIONS					

Looking for pricing, stock, or lifecycle information?

Click below to explore more details on WIN SOURCE:

-  [View 19001-0010 on WIN SOURCE](#)
-  [Molex, LLC Information](#)

Optimize Your Supply Chain with WIN SOURCE Solutions

-  Global Sourcing Solution
-  Obsolete Management
-  Cost Control Management
-  Shortage Management
-  Alternative Solution
-  Excess Inventory Management