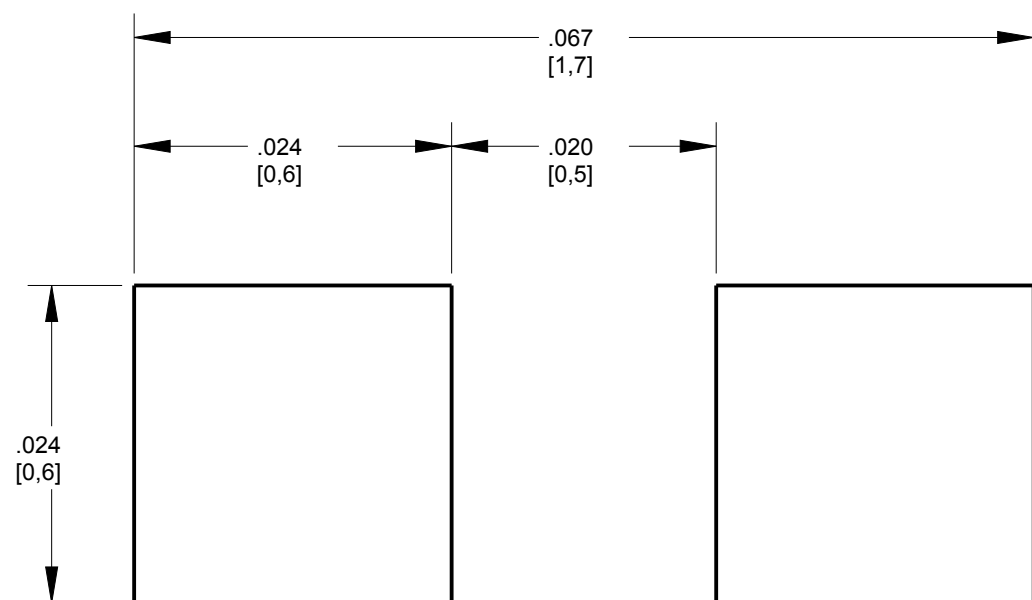
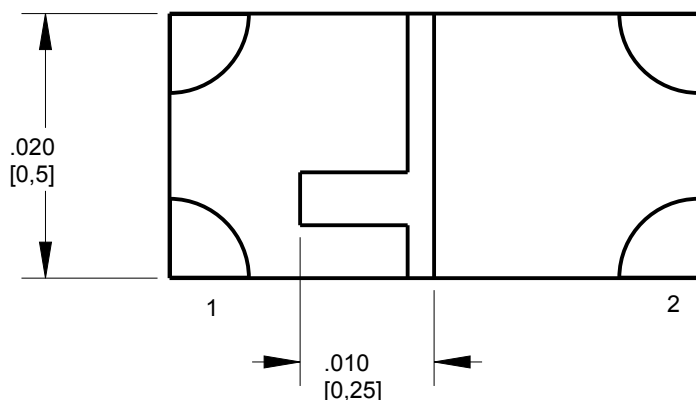
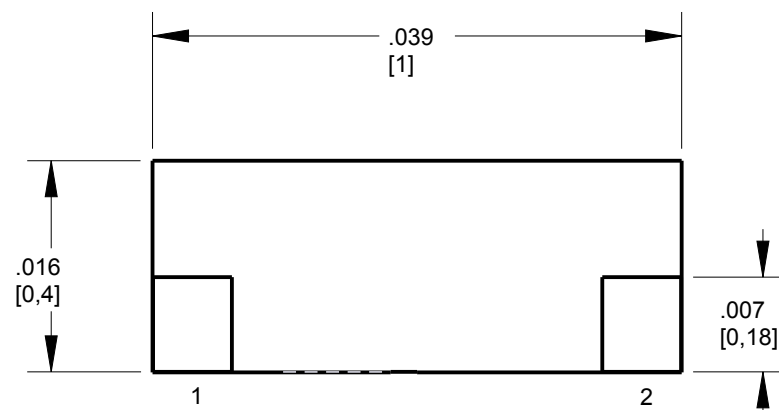




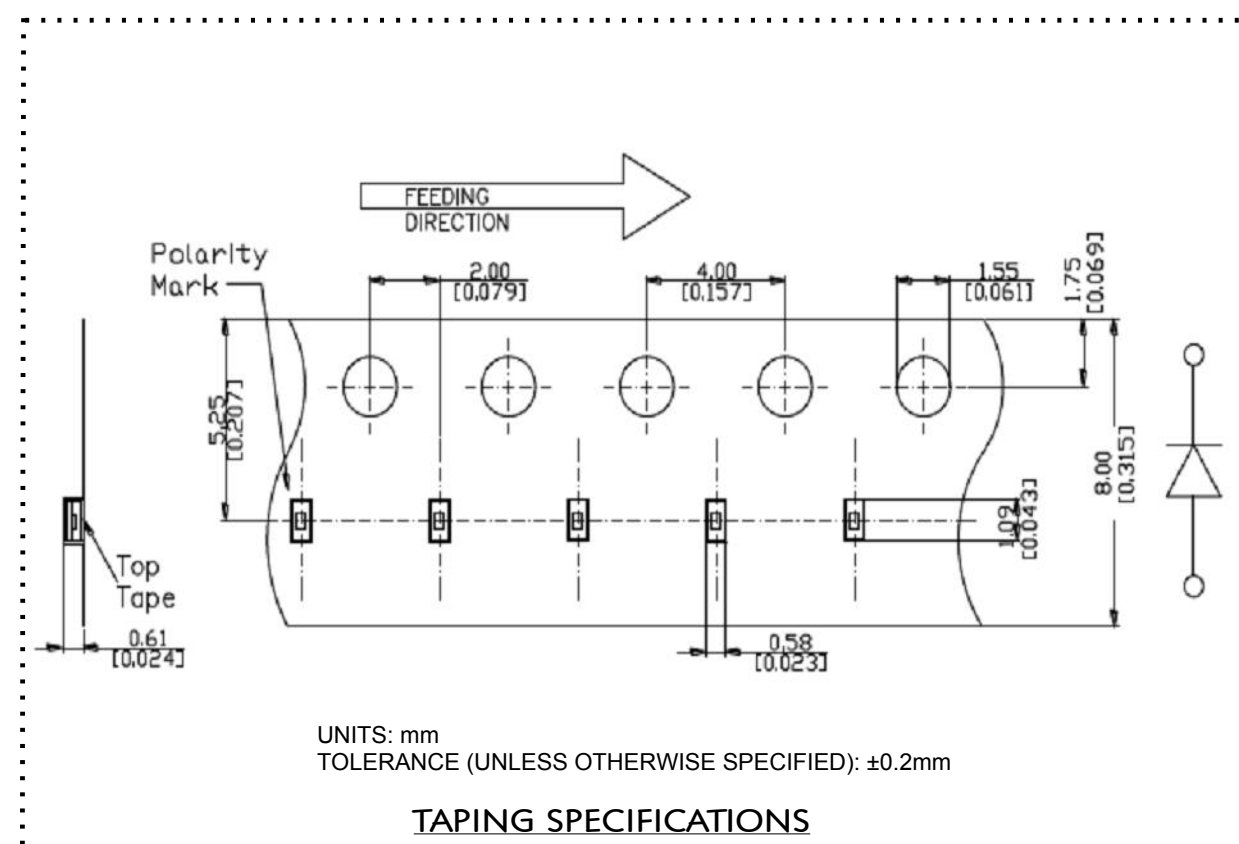
**THE DATASHEET OF**  
**5988A10107F**



PART NUMBER	LED COLOR (nm)
5988A10102F	RED (635)
5988A10107F	
5988A20102F	RED (625)
5988A20107F	
5988A30102F	ORANGE (602)
5988A30107F	
5988A40102F	YELLOW (591)
5988A40107F	
5988A60102F	YELLOW GREEN (572)
5988A60107F	
5988A80102F	GREEN (527)
5988A80107F	
5988A90102F	BLUE (470)
5988A90107F	

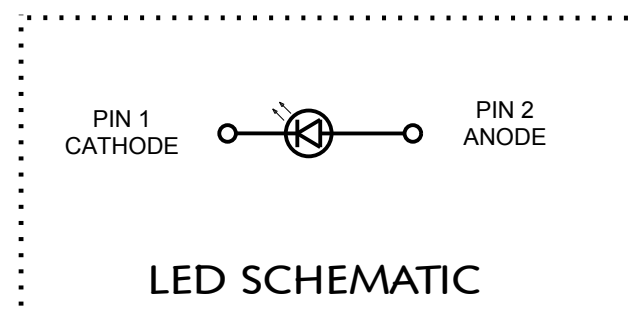


RECOMMENDED SOLDER PAD LAYOUT



ABSOLUTE MAXIMUM RATINGS AT 25°C							
LED COLOR	POWER DISSIPATION (mW)	FORWARD CURRENT (mA)	PEAK FORWARD CURRENT (mA)	REVERSE VOLTAGE (V)	OPERATING TEMPERATURE (°C)	STORAGE TEMPERATURE (°C)	DERATING VALUE FROM 25°C (mA/°C)
RED (635)	46	20	60	5	-40 TO +85	-40 TO +85	.25
RED (625)	50						
ORANGE	52						
YELLOW	24						
YELLOW GREEN	24						
GREEN	33						
BLUE	33						

OPERATING CHARACTERISTICS AT 25°C											
LED COLOR	TEST CONDITION	LUMINOUS INTENSITY (mcd)			DOMINANT WAVELENGTH (nm)			REVERSE CURRENT (MAX)	FORWARD VOLTAGE (IF=5mA)		VIEWING ANGLE (DEG)
		IF(mA)	MIN	TYP	MAX	MIN	TYP		MAX	TYP	
RED (635)	5	10µA @ VR=5V	28	65	100	630	635	640	1.6	2.3	140
RED (625)			28	47	65	620	625	630	1.8	2.4	
ORANGE			28	47	65	600	605	610	1.8	2.4	
YELLOW			18	42	65	587	591	595	1.8	2.4	
YELLOW GREEN			8	12	18	568	572	575	1.8	2.4	
GREEN			230	330	430	525	528	530	2.5	3.3	
BLUE			43	72	100	465	470	475	2.5	3.3	



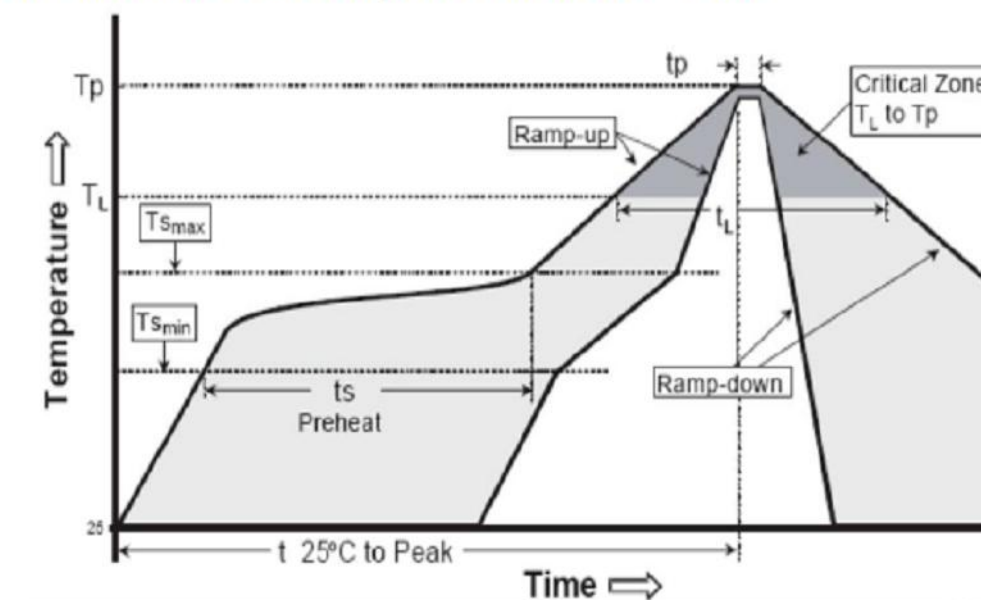
**ATTENTION:**  
OBSERVE PRECAUTIONS FOR HANDLING ELECTROSTATIC SENSITIVE DEVICES

NOTES:

- PIN NUMBERS ARE FOR REFERENCE ONLY, DESIGNATION NON-EXISTENT ON PART.
- LABELING FOR REEL AND OUTSIDE OF ALUMINUM BAG: DIALIGHT P/N, QUANTITY PER REEL, DATE CODE, INTENSITY BIN CODE, LOT NUMBER AND COUNTRY OF ORIGIN
- THIS PRODUCT IS RoHS COMPLIANT. EACH BAG IS TO BE MARKED WITH RoHS COMPLIANT LABEL OR EQUIVALENT MARKINGS. LED MUST BE Pb FREE.
- MOISTURE SENSITIVITY LEVEL 3
- QUANTITY IS 4,000 PCS/ REEL.

REV	REVISIONS	DRN	APP	DATE
A	NEW RELEASE	LD	NO	1-9-18
B	ADDED VIEWING ANGLE	LD	NO	4-25-19
C	REPLACED DUPLICATED GREEN WITH ORANGE, CHANGED THE POWER DISSIPATION, DERATING VALUES, FORWARD CURRENT OF THE LEDs.	LD	NO	8-30-19

SMT Reflow Soldering Instructions SMT



Profile Feature	Symbol	Pb-Free(SnAgCu)Assembly			Unit
		Min	Tpy	Max	
Ramp-up rate to preheat (25°C to 150°C) (T <sub>smax</sub> T <sub>p</sub> )			2	3	°C/s
Time t <sub>s</sub> (T <sub>smin</sub> to T <sub>smax</sub> ) (t <sub>smin</sub> t <sub>smax</sub> )	t <sub>s</sub>	60	100	120	s
Ramp-up rate to peak (T <sub>smax</sub> to T <sub>p</sub> ) T <sub>smax</sub>			2		°C/s
Liquidus temperature (T <sub>L</sub> )	T <sub>L</sub>	217	°C		°C
Time above liquidus temperature (t <sub>L</sub> )	t <sub>L</sub>		80	100	s
Peak temperature (T <sub>p</sub> )	T <sub>p</sub>		245	260	°C/s
Time within 5°C of the specified peak temperature T <sub>p</sub> -5°C	t <sub>P</sub>	10	20	30	s
Ramp-down rate (T <sub>p</sub> to 100°C)			3	6	°C/s
Time (25°C to T <sub>p</sub> )				480	s

RECOMMENDED RoHS SOLDER PROFILE

THIS DRAWING AND THE CONTENTS HEREIN ARE CONFIDENTIAL AND THE SOLE PROPERTY OF DIALIGHT CORP. REPRODUCTION OF THIS DRAWING OR CONSTRUCTION OF ANY PARTS WITHIN THIS DRAWING ARE FORBIDDEN WITHOUT THE WRITTEN CONSENT OF DIALIGHT CORP.		
DIALIGHT CORP INTERNAL REFERENCE ONLY = 3D MODEL: 450021848X15-A-1		
SCALE: 70.000	DRAWING NUMBER	REV
ALL DIMS IN: INCHES (MM)	C18402	C
TOLERANCES: UNLESS OTHERWISE SPECIFIED	TITLE	
FRACTIONS: ±1/64	SM LED 0402 PACKAGE	
DECIMALS (.XX): ±.01	MATERIAL	
DECIMALS (.XXX): ±.005	Dialight	
DECIMALS (.XXXX): ±.0005	1501 ROUTE 34 SOUTH FARMINGDALE, NJ 07727 (732) 919-3119 www.dialight.com	
ANGLES: ±1°	FINISH	
FSCM 83330	SHEET 1 OF 1 FAMILY TABLE:	

## Looking for pricing, stock, or lifecycle information?

Click below to explore more details on WIN SOURCE:

 [View 5988A10107F on WIN SOURCE](#)

 [Dialight Information](#)

## Optimize Your Supply Chain with WIN SOURCE Solutions

-  Global Sourcing Solution
-  Obsolete Management
-  Cost Control Management
-  Shortage Management
-  Alternative Solution
-  Excess Inventory Management