



**THE DATASHEET OF  
TNG1-4-78**



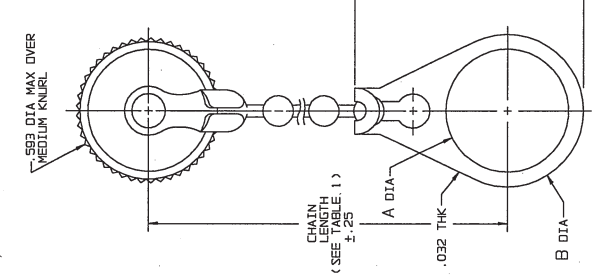
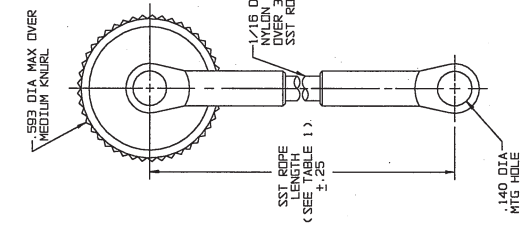
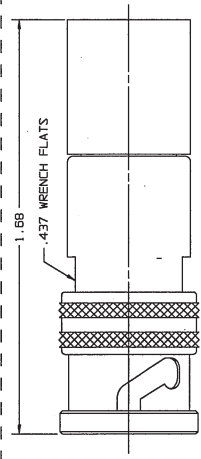
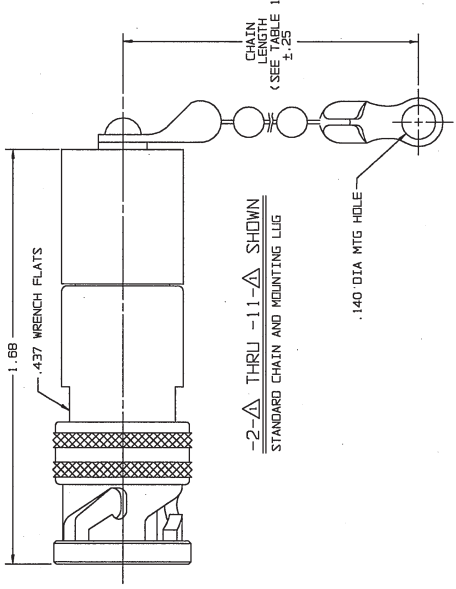
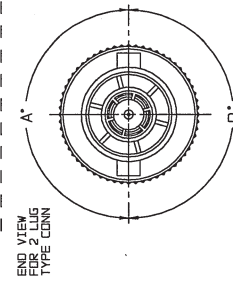
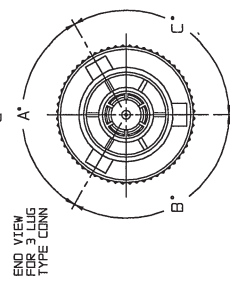
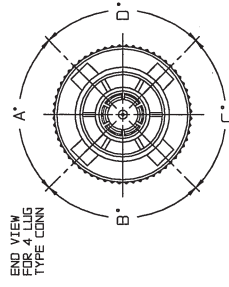
DASH NO	DESCRIPTION	DASH NO	DESCRIPTION
-1	TERM (NO CHAIN)	-12	TERM WITH 2.5 JACKETED STAINLESS STEEL ROPE
-2	TERM WITH 2.5 BRASS CHAIN	-13	TERM WITH 2.5 JACKETED STAINLESS STEEL ROPE
-3	TERM WITH 2.5 BRASS CHAIN	-14	TERM WITH 6.0 JACKETED STAINLESS STEEL ROPE
-4	TERM WITH 3.0 NYLON CHAIN	-15	TERM WITH 4.0 JACKETED STAINLESS STEEL ROPE
-5	TERM WITH 6.0 BRASS CHAIN	-16	TERM WITH 7.0 JACKETED STAINLESS STEEL ROPE
-6	TERM WITH 6.0 NYLON CHAIN	-17	TERM WITH 4.5 JACKETED STAINLESS STEEL ROPE
-7	TERM WITH 6.0 NYLON CHAIN	-18	TERM WITH 12.0 JACKETED STAINLESS STEEL ROPE
-8	TERM WITH 4.0 NYLON CHAIN	-19	TERM WITH 18.0 JACKETED STAINLESS STEEL ROPE
-9	TERM WITH 4.0 NYLON CHAIN		
-10	TERM WITH 10.0 BRASS CHAIN		
-11	TERM WITH 10.0 NYLON CHAIN		

MODEL NO	TYPE CONN	POLARIZATION			
		A DEGREE	B DEGREE	C DEGREE	D DEGREE
TNG1	3 LUG	120°	120°	120°	120°
TNG11	4 LUG	90°	90°	90°	90°
TNG111	2 LUG	180°	180°	180°	180°
TNG1111		100°	150°	110°	110°
TNG11111		120°	150°	115°	115°
TNG111111	3 LUG	125°	110°	125°	110°
TNG1111111		130°	100°	130°	110°
TNG11111111		100°	140°	110°	100°
TNG111111111		135°	135°	135°	90°

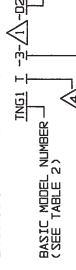
DASH NO	A" DIA	B" DIA	C" DIA	D" DIA	7" DIA DIM
-01	1.755	.875	1.191	.512	.450
-02	1.630	.750	1.086	.450	.388
-03	1.505	.625	.941	.388	.325
-04	1.439	.562	.878	.355	.295
-05	1.380	.500	.816	.325	.278
-06	1.317	.437	.753	.295	.278
-07	1.281	.406	.722	.278	.278
-08	1.210	.350	.662	.250	.250
-09	1.167	.312	.628	.231	.231
-10	1.192	.312	.628	.231	.231
-008	.330	.450	.766	.300	.300

DATA CONTAINED IN THIS DOCUMENT IS UNCLASSIFIED EXCEPT WHERE SHOWN OTHERWISE. IT IS THE PROPERTY OF THE ELECTRONICS RESEARCH CORPORATION AND SHALL NOT BE DISCLOSED, COPIED OR REPRODUCED IN ANY MANNER WITHOUT THE WRITTEN PERMISSION OF THE ELECTRONICS RESEARCH CORPORATION.

**RED INDICATE**



3. EXAMPLE OF COMPLETE MODEL NUMBER:



BASIC MODEL NUMBER (SEE TABLE 2)

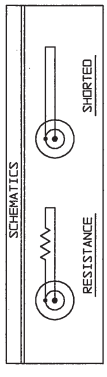
-1-△ SHOWN NO CHAIN/ROPE OR MOUNTING LUG

△ NOTE THAT LENGTH FOR SST ROPE WITH MOUNTING LUG OPTION IS NOT MEASURED TO CENTER OF BULKHEAD MOUNTING LUG

△ POLARIZATION LETTER: NONE REQUIRED FOR STANDARD POLARIZATION LETTER CODE (SEE TABLE 2)

2. 2, 3 AND 4 LUG CONCENTRIC TWIMAX/TRIAX TERMINATION PLUG WITH CHAIN, SST ROPE AND MOUNTING LUG OPTIONS

RESISTANCE VALUE IN OHMS 1/2W, 1Z, "S" = CONTACT SHORTED TO INNER SHIELD (NO RESISTOR) "D" = LOOSELY ASSEMBLED (NO RESISTOR)



REVISIONS FOR DRAWING FOR: 3102-00836G  
DATE: 3-24-64  
DRAWN BY: M.T.  
CHECKED BY: M.T.  
QUALITY: M.T.  
NEXT ASSY: 3102-00836G

## Looking for pricing, stock, or lifecycle information?

Click below to explore more details on WIN SOURCE:

- ⊖ [View TNG1-4-78 on WIN SOURCE](#)
- ⊖ [Cinch Connectivity Solutions Information](#)

## Optimize Your Supply Chain with WIN SOURCE Solutions

- ✓ Global Sourcing Solution
- ✓ Obsolete Management
- ✓ Cost Control Management
- ✓ Shortage Management
- ✓ Alternative Solution
- ✓ Excess Inventory Management