



# THE DATASHEET OF KARN-50+





COAXIAL

# Termination

## KARN-50+

Mini-Circuits

50Ω DC to 8 GHz N-Type Male

### FEATURES

- Wideband coverage, DC to 8 GHz
- Useable to 9 GHz (Return Loss, 20 dB typ. at 9 GHz)
- Rugged Construction



Generic photo used for illustration purposes only

Model No.	KARN-50+
Case Style	LL718
Connectors	N-Type-Male

### +RoHS Compliant

The +Suffix identifies RoHS Compliance. See our website for methodologies and qualifications

### APPLICATIONS

- Cellular Communications
- Satellite Communications
- Defense Communications
- Test Setup

### ELECTRICAL SPECIFICATIONS AT +25°C

Parameter	Frequency (GHz)	Min.	Typ.	Max.	Units
Frequency Range		DC		8	GHz
Impedance			50		Ohms
Return Loss	DC - 0.5	30	—	—	dB
	DC - 1	30	—	—	
	DC - 2	29	—	—	
	DC - 5	27	—	—	
	DC - 8	20	—	—	
Power Rating*	DC - 8	—	—	2	W

\*At 70°C, derate linearly at 0.025W/°C at 100°C.

### ABSOLUTE MAXIMUM RATINGS

Parameter	Ratings
Operating Temperature	-55°C to +100°C
Storage Temperature	-55°C to +100°C

Permanent damage may occur if any of these limits are exceeded.

REV. F  
ECO-012138  
KARN-50+  
MCL NY  
231017





COAXIAL

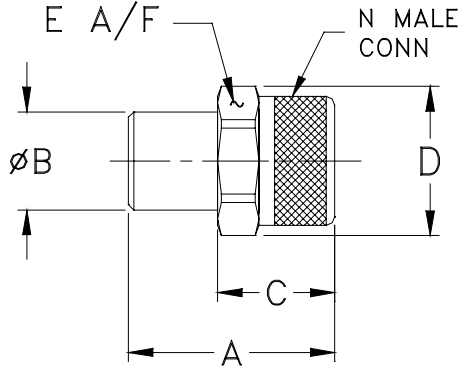
# Termination

## KARN-50+

Mini-Circuits

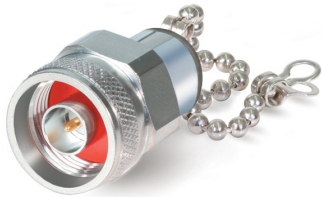
50Ω DC to 8 GHz N-Type Male

### OUTLINE DRAWING



### OUTLINE DIMENSIONS (Inch/mm)

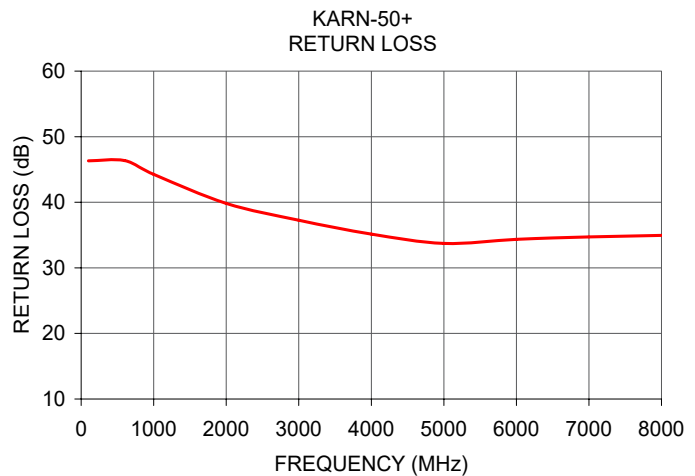
A	B	C	D	E	wt
1.18	0.56	0.67	0.85	0.787	grams
29.97	14.22	17.02	21.59	19.99	30.0



To order KARN-50+ with 3½ length chain and end coupling with .130" diameter mtg. hole, use part no. [KARN-50CN+](#).

### TYPICAL PERFORMANCE DATA

Frequency (MHz)	Return Loss (dB)
100	46.31
600	46.36
1000	44.26
2000	39.83
3000	37.27
4000	35.14
5000	33.72
6000	34.35
7000	34.72
8000	34.96



## Looking for pricing, stock, or lifecycle information?

Click below to explore more details on WIN SOURCE:

 [View KARN-50+ on WIN SOURCE](#)

 [Mini-Circuits Information](#)

## Optimize Your Supply Chain with WIN SOURCE Solutions

-  Global Sourcing Solution
-  Obsolete Management
-  Cost Control Management
-  Shortage Management
-  Alternative Solution
-  Excess Inventory Management