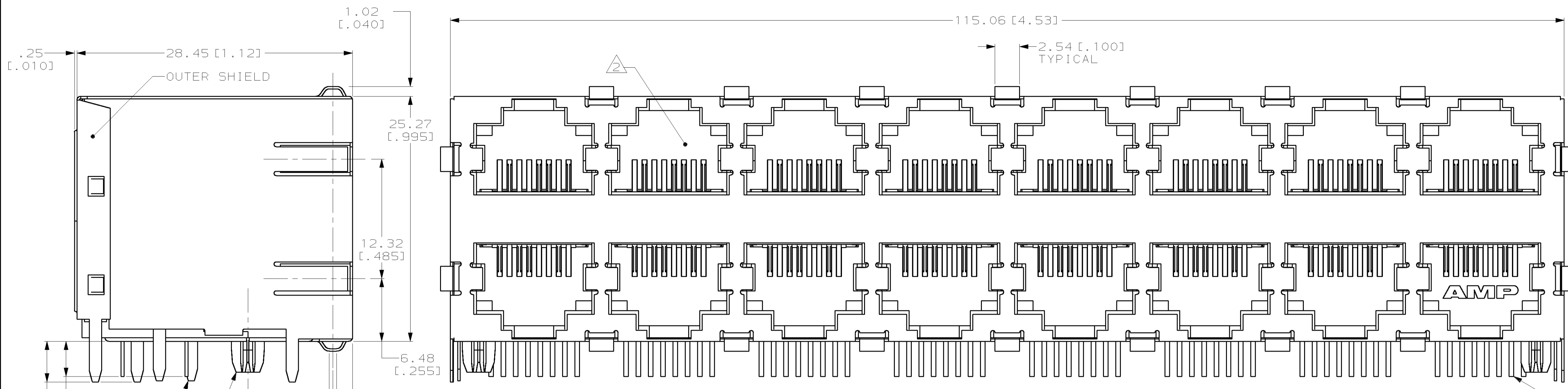
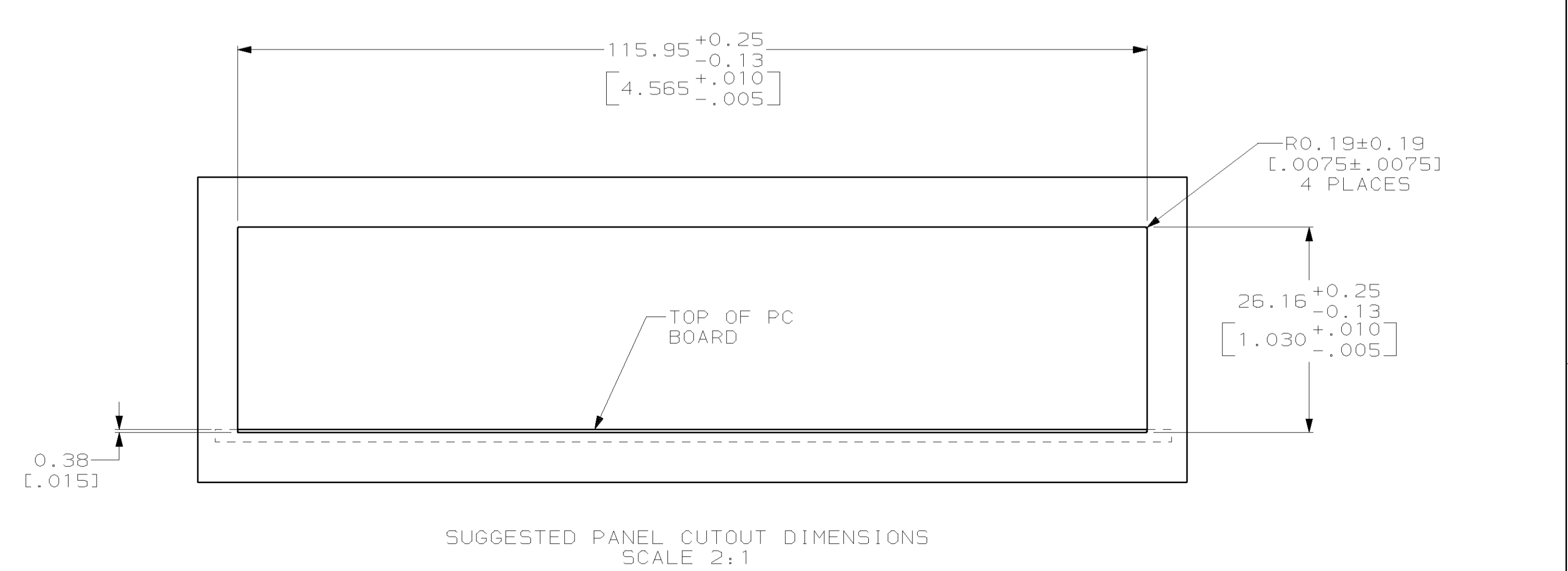
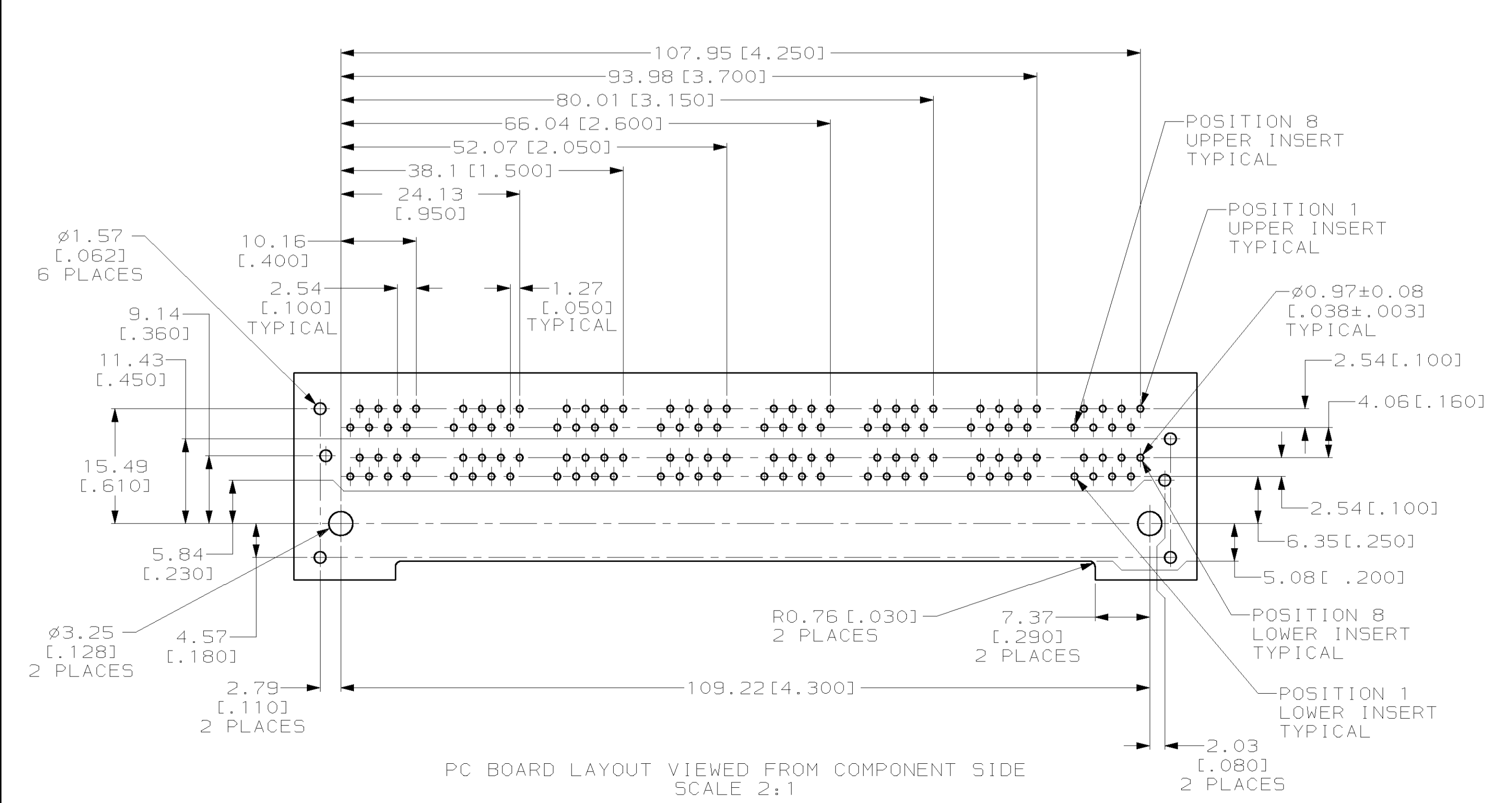
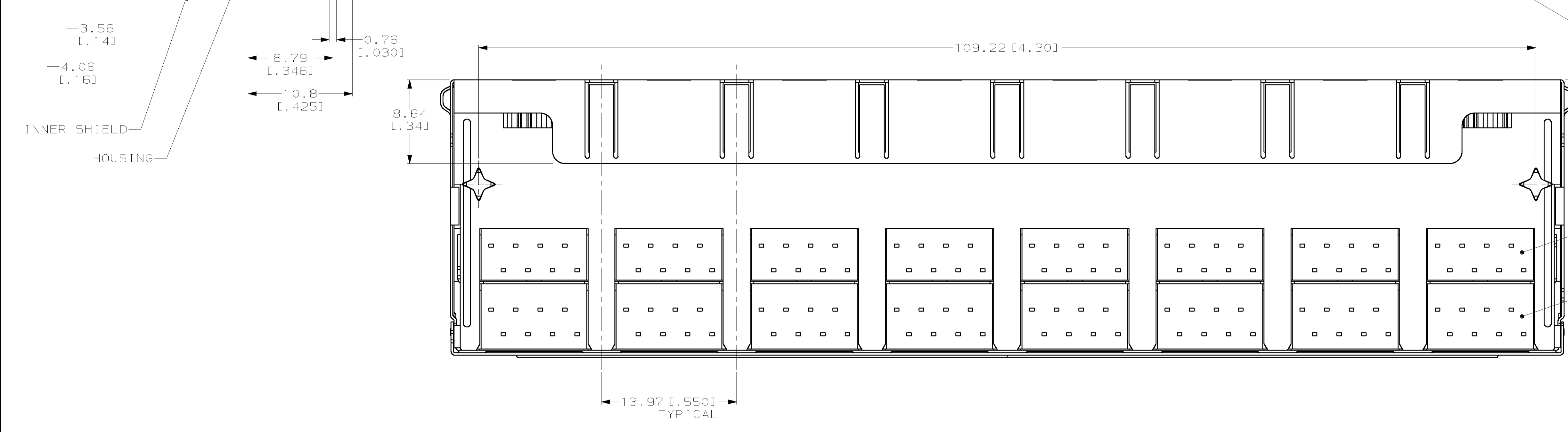


LOC	DIST	REVISIONS			
F	CHR	DESCRIPTION	DATE	OWN	APVD
F		REVISED; EC OUI1C-0088-01	07MAR01	DL	DECL



MATERIAL:
 HOUSING - PCT POLYESTER, BLACK, UL94V-0.
 OVERMOLDED TERMINAL ARRAY - PBT, BROWN.
 TERMINALS - 0.33 [.013] THICK PHOS BRONZE PLATED WITH 1.27µm [.000050] MINIMUM THICK HARD GOLD IN LOCALIZED AREA AND 3.81µm [.000150] MINIMUM THICK TIN-LEAD IN SOLDER AREA OVER 1.27µm [.000050] MINIMUM THICK NICKEL UNDERPLATE.
 SHIELD - 0.25 [.010] THICK COPPER ALLOY PLATED WITH 2.03µm [.000080] MINIMUM THICK TIN-LEAD OVER 2.54µm [.000100] MINIMUM COPPER.

JACK CAVITY CONFORMS TO FCC RULES AND REGULATIONS, PART 68 SUBPART F.



DIMENSIONS: mm [INCHES]		TOLERANCES UNLESS OTHERWISE SPECIFIED: 0 PLC ± 1 PLC ± 2 PLC ±0.25 [.010] 3 PLC ±0.13 [.005] 4 PLC ± ANGLES ±		DWN I. SPRINKLE 6-09-95 CHK C. WHITT 6-23-95 APVD J. VARSIK 6-30-95	NAME STACKED MODULAR JACK ASSEMBLY, 2x8 PORT, 8 POSITION, SHIELDED, PANEL GROUND, CATEGORY 5
MATERIAL FINISH		WEIGHT CUSTOMER DRAWING		SIZE A1	CAGE CODE 00779
DRAWING NO C-569264		SCALE 4:1		SHEET 1 of 1	


569264-1
PART NUMBER

AMP AMP Incorporated
Harrisburg, PA 17105-3608

SCALE 4:1 SHEET 1 of 1 REV F

Looking for pricing, stock, or lifecycle information?

Click below to explore more details on WIN SOURCE:

 [View 569264-1](#) on WIN SOURCE

 [TE Connectivity](#) Information

Optimize Your Supply Chain with WIN SOURCE Solutions

-  Global Sourcing Solution
-  Obsolete Management
-  Cost Control Management
-  Shortage Management
-  Alternative Solution
-  Excess Inventory Management