



THE DATASHEET OF
0327-0-15-15-34-27-10-0

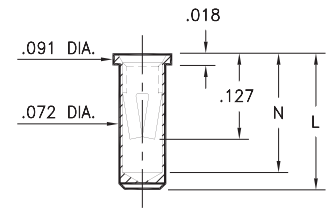


PIN RECEPTACLES

FOR .032" - .046" DIAMETER PINS

0327/0351/0373

03XX-0-15-XX-34-XX-10-0
Solder mount in .075 min. mounting hole
Also available on 12mm or 24mm wide carrier tape: See chart for details
See page 194.14 for Tape & Reel details



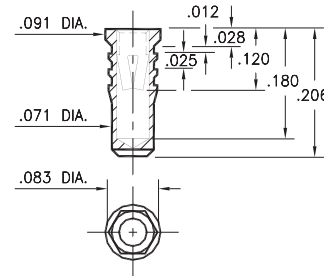
Basic Part Number	Length L	Depth N
0327-0	.206	.180
0351-0	.226	.200
0373-0	.270	.241

T&R Packaging

Basic Part Number	Tape Width	Parts per 13" Reel
0327-0	12mm	1,400
0351-0	24mm	1,100
0373-0	24mm	1,000

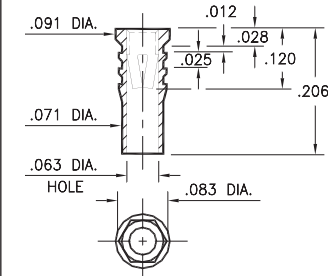
0328

0328-0-15-XX-34-XX-10-0
Hex press-fit in .079 plated through-hole



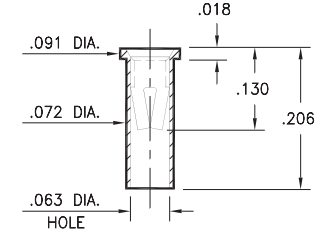
0334

0334-0-15-XX-34-XX-10-0
Hex press-fit in .079 plated through-hole



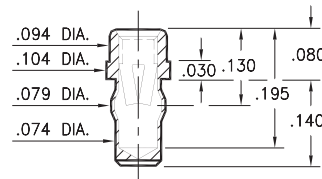
0312

0312-0-15-XX-34-XX-10-0
Solder mount in .075 min. mounting hole
Also available on 12mm wide carrier tape: 1,400 parts per 13" reel
See page 194.14 for Tape & Reel details



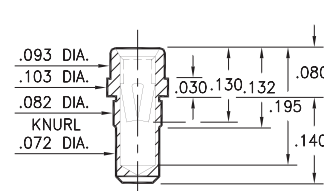
0333

0333-0-42-XX-34-XX-10-0
Press-fit in .076 mounting hole



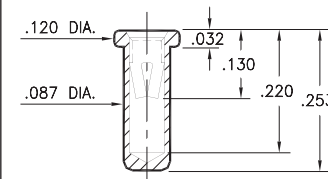
0357

0357-0-15-XX-34-XX-10-0
Press-fit in .078 mounting hole
Also available on 24mm wide carrier tape: 1,400 parts per 13" reel
See page 194.15 for Tape & Reel details



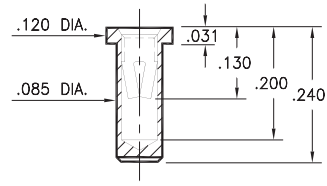
0317

0317-0-15-XX-34-XX-04-0
Solder mount in .091 min. mounting hole



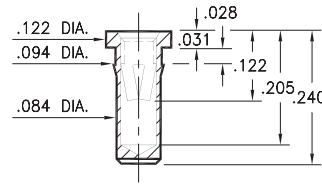
0340

0340-0-15-XX-34-XX-10-0
Solder mount in .087 min. mounting hole
Also available on 24mm wide carrier tape: 1,250 parts per 13" reel
See page 194.14 for Tape & Reel details



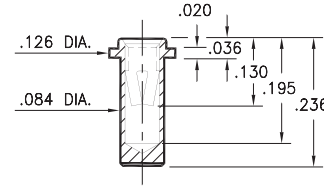
0345

0345-0-15-XX-34-XX-10-0
Press-fit in .089 mounting hole
Also available on 24mm wide carrier tape: 1,250 parts per 13" reel
See page 194.15 for Tape & Reel details



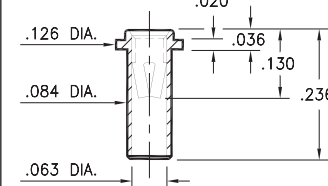
0316

0316-0-15-XX-34-XX-10-0
Solder mount in .087 min. mounting hole
Also available on 24mm wide carrier tape: 1,250 parts per 13" reel
See page 194.15 for Tape & Reel details



0314

0314-0-15-XX-34-XX-10-0
Solder mount in .087 min. mounting hole
Also available on 24mm wide carrier tape: 1,250 parts per 13" reel
See page 194.15 for Tape & Reel details



SPECIFICATIONS:

Shell Material: Brass Alloy 360, 1/2 Hard
Contact Material: Beryllium Copper Alloy 172, HT
Dimensions: Inches
Tolerances On: Lengths: ±.005
Diameters: ±.002
Angles: ± 2°



ORDER CODE: XXXX - X - XX - XX - 34 - XX - 10 - 0

BASIC PART # →
SPECIFY SHELL FINISH:
01 200 μ" TIN/LEAD OVER NICKEL
◆ 80 200 μ" TIN OVER NICKEL (RoHS)
◆ 15 10 μ" GOLD OVER NICKEL (RoHS)
SPECIFY CONTACT FINISH:
01 200 μ" TIN/LEAD OVER NICKEL
◆ 80 200 μ" TIN OVER NICKEL (RoHS)
◆ 27 30 μ" GOLD OVER NICKEL (RoHS)

SELECT CONTACT:

#34 CONTACT (DATA ON PAGE 258)
(For alternate contact choices, see group E on page 248)

Looking for pricing, stock, or lifecycle information?

Click below to explore more details on WIN SOURCE:

- ⊖ [View 0327-0-15-15-34-27-10-0 on WIN SOURCE](#)
- ⊖ [Mill-Max Manufacturing Corp. Information](#)

Optimize Your Supply Chain with WIN SOURCE Solutions

- ✓ Global Sourcing Solution
- ✓ Obsolete Management
- ✓ Cost Control Management
- ✓ Shortage Management
- ✓ Alternative Solution
- ✓ Excess Inventory Management