

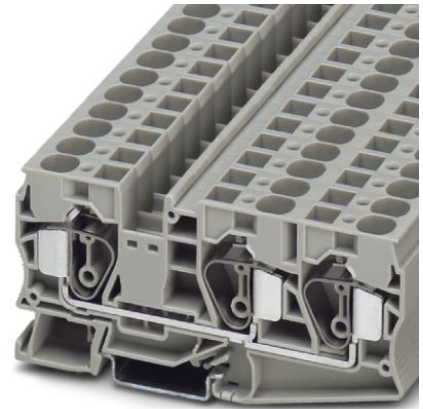


THE DATASHEET OF
3035328



ST 16-TWIN


Order No.: 3035328



<http://eshop.phoenixcontact.de/phoenix/treeViewClick.do?UID=3035328>

Feed-through modular terminal block, Type of connection: Spring-cage connection, Spring-cage connection, Cross section: 0.2 mm² - 25 mm², AWG 24 - 4, Width: 12.2 mm, Color: gray, Mounting type: NS 35/15, NS 35/7.5

Commercial data

GTIN (EAN)	
sales group	A630
Pack	25 pcs.
Customs tariff	85369010
Catalog page information	Page 85 (CL-2009)

Product notes

WEEE/RoHS-compliant since:
08/11/2006



<http://www.download.phoenixcontact.com>
Please note that the data given here has been taken from the online catalog. For comprehensive information and data, please refer to the user documentation. The General Terms and Conditions of Use apply to Internet downloads.

Technical data

General

Number of levels	1
Number of connections	3
Color	gray

Insulating material	PA
Inflammability class acc. to UL 94	V0

Dimensions

Width	12.2 mm
Length	107.8 mm
Height NS 35/7.5	51.5 mm
Height NS 35/15	59 mm

Technical data

Maximum load current	90 A (with 25 mm ² conductor cross section)
Rated surge voltage	8 kV
Pollution degree	3
Surge voltage category	III
Insulating material group	I
Connection in acc. with standard	IEC 60947-7-1
Nominal current I _N	76 A
Nominal voltage U _N	800 V
Open side panel	ja

Connection data

Conductor cross section solid min.	0.2 mm ²
Conductor cross section solid max.	25 mm ²
Conductor cross section stranded min.	0.2 mm ²
Conductor cross section stranded max.	16 mm ²
Conductor cross section AWG/kcmil min.	24
Conductor cross section AWG/kcmil max	4
Conductor cross section stranded, with ferrule without plastic sleeve min.	0.25 mm ²
Conductor cross section stranded, with ferrule without plastic sleeve max.	16 mm ²
Conductor cross section stranded, with ferrule with plastic sleeve min.	0.25 mm ²
Conductor cross section stranded, with ferrule with plastic sleeve max.	16 mm ²
2 conductors with same cross section, stranded, TWIN ferrules with plastic sleeve, min.	1.5 mm ²
2 conductors with same cross section, stranded, TWIN ferrules with plastic sleeve, max.	4 mm ²

Type of connection	Spring-cage connection
Stripping length	16 mm
Internal cylindrical gage	A7

Certificates / Approvals



Certification

UL, VDE-PZI

Accessories

Item	Designation	Description
Assembly		
3035357	D-ST 16-TWIN	End cover, Length: 107.8 mm, Width: 2.2 mm, Color: gray

Bridges

3005950	FBS 2-12	Plug-in bridge, Number of positions: 2, Color: red
3030886	RB ST 16-(2,5/4)	Reducing bridge, Number of positions: 2, Color: red

General

0812146	ZB 12,LGS:L1-N,PE	Zack marker strip, printed horizontally: 5-section, L1, L2, L3, N, PE, color: White
---------	-------------------	---

Marking

0812133	ZB 12:SO/CMS	Zack marker strip, 5-section, divisible, special printing, marking according to customer requirements
0812120	ZB 12:UNPRINTED	Zack marker strip without color print: 5-section, for individual labeling with B-STIFT, ZB-T or CMS system, sufficient for labeling 50 terminal blocks per pack
0809735	ZBF 12:UNBEDRUCKT	Zack strip, flat, unprinted, 5-section, divisible, for labeling by the customer

Plug/Adapter

0201731	MPS-IH BK	Insulating sleeve, Color: black
0201689	MPS-IH BU	Insulating sleeve, Color: blue
0201702	MPS-IH GN	Insulating sleeve, Color: green
0201728	MPS-IH GY	Insulating sleeve, Color: gray

0201676	MPS-IH RD	Insulating sleeve, Color: red
0201715	MPS-IH VT	Insulating sleeve, Color: violet
0201663	MPS-IH WH	Insulating sleeve, Color: white
0201692	MPS-IH YE	Insulating sleeve, Color: yellow
0201744	MPS-MT	Test plugs

Tools

1206612	SZF 3-1,0X5,5	Actuation tool, for ST terminal blocks, also suitable for use as a bladed screwdriver, size: 1.0 x 5.5 x 150 mm, 2-component grip, with non-slip grip
---------	---------------	---

Diagrams/Drawings

Circuit diagram



ST 16-TWIN Order No.: 3035328

<http://eshop.phoenixcontact.de/phoenix/treeViewClick.do?UID=3035328>

Address

PHOENIX CONTACT Deutschland GmbH
Flachmarktstr. 8
32825 Blomberg, Germany
Phone +49 5235 3 12000
Fax +49 5235 3 41200
<http://www.phoenixcontact.de>



© 2011 Phoenix Contact
Technical modifications reserved;

Looking for pricing, stock, or lifecycle information?

Click below to explore more details on WIN SOURCE:

- ⊖ [View 3035328 on WIN SOURCE](#)
- ⊖ [Phoenix Contact Information](#)

Optimize Your Supply Chain with WIN SOURCE Solutions

- ✓ Global Sourcing Solution
- ✓ Obsolete Management
- ✓ Cost Control Management
- ✓ Shortage Management
- ✓ Alternative Solution
- ✓ Excess Inventory Management