



THE DATASHEET OF
174196-1



THIS DRAWING IS UNPUBLISHED.

RELEASED FOR PUBLICATION

,19

© COPYRIGHT 19

BY AMP INCORPORATED. ALL RIGHTS RESERVED.

LOC DIST

REVISIONS

J

P

LTR

DESCRIPTION

ECN

DATE

DWN

APVD

0

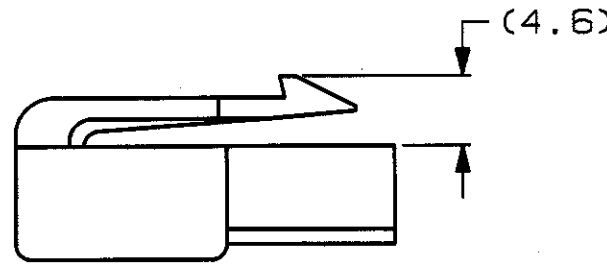
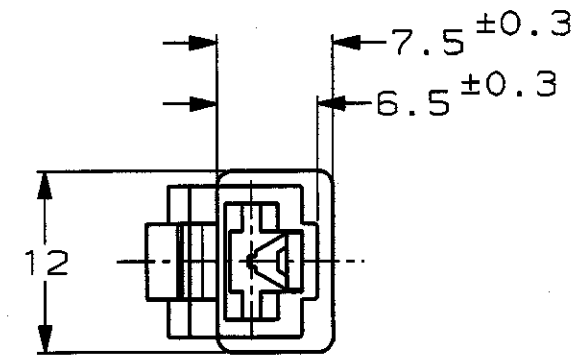
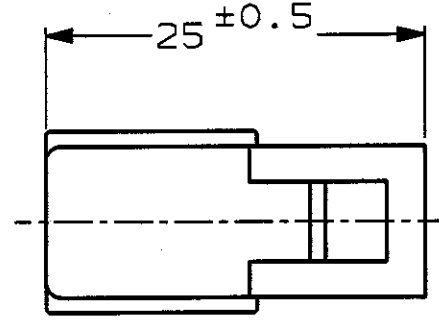
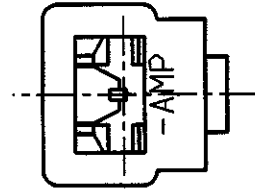
RELEASED

FJ00-0603-99

08APR99

TS

KB



- 1. 嵌合する相手ハウジングは型番 ; 174195
- 2. 使用端子は型番 ; 170032, 170258, 170384

- 1. THE MATING CAP HOUSING PART NUMBER ; 174195
- 2. APPLICABLE CONTACT PART NUMBER ; 170032, 170258, 170384

RED 赤	174196-9
ORANGE 橙	174196-8
YELLOW 黄	174196-7
GRAY 灰	174196-6
BLUE 青	174196-5
GREEN 緑	174196-4
BROWN 茶	174196-3
BLACK 黒	174196-2
NATURAL 自然色	174196-1
COLOR 色	PARTS NUMBER 型番

THIS DRAWING IS A CONTROLLED DOCUMENT FOR AMP INCORPORATED. IT IS SUBJECT TO CHANGE AND THE CONTROLLING ENGINEERING ORGANIZATION SHOULD BE CONTACTED FOR THE LATEST REVISION.

DWN T. SHINOHARA 08APR99

CHK K. BETSUI 08APR99

APVD

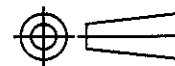
PRODUCT SPEC 108-5147-2

APPLICATION SPEC

WEIGHT 1g

CUSTOMER DRAWING

DIMENSIONS:
単位: 概
mm



MATERIAL
材料
66 NYLON
66 ナイロン

TOLERANCES UNLESS OTHERWISE SPECIFIED

一般公差
10mm ±0.2
30mm ±0.25
100mm ±0.3
ANGLE ±3°

COLOR
色
SEE TABLE
表参照

WIRE RANGE 包含電線断面積 INSULATION DIA 被覆外径

AMP 株式会社 Kawasaki, Japan

1Pos PLUG HOUSING
250 SERIES HOUSING LANCE CONNECTOR


SIZE A3 CAGE CODE 00779 DRAWING NO 174196 RESTRICTED TO

SCALE 尺度 2:1 SHEET 1 OF 1 REV 0

参考図面

Looking for pricing, stock, or lifecycle information?

Click below to explore more details on WIN SOURCE:

 [View 174196-1](#) on WIN SOURCE

 [TE Connectivity](#) Information

Optimize Your Supply Chain with WIN SOURCE Solutions

-  Global Sourcing Solution
-  Obsolete Management
-  Cost Control Management
-  Shortage Management
-  Alternative Solution
-  Excess Inventory Management