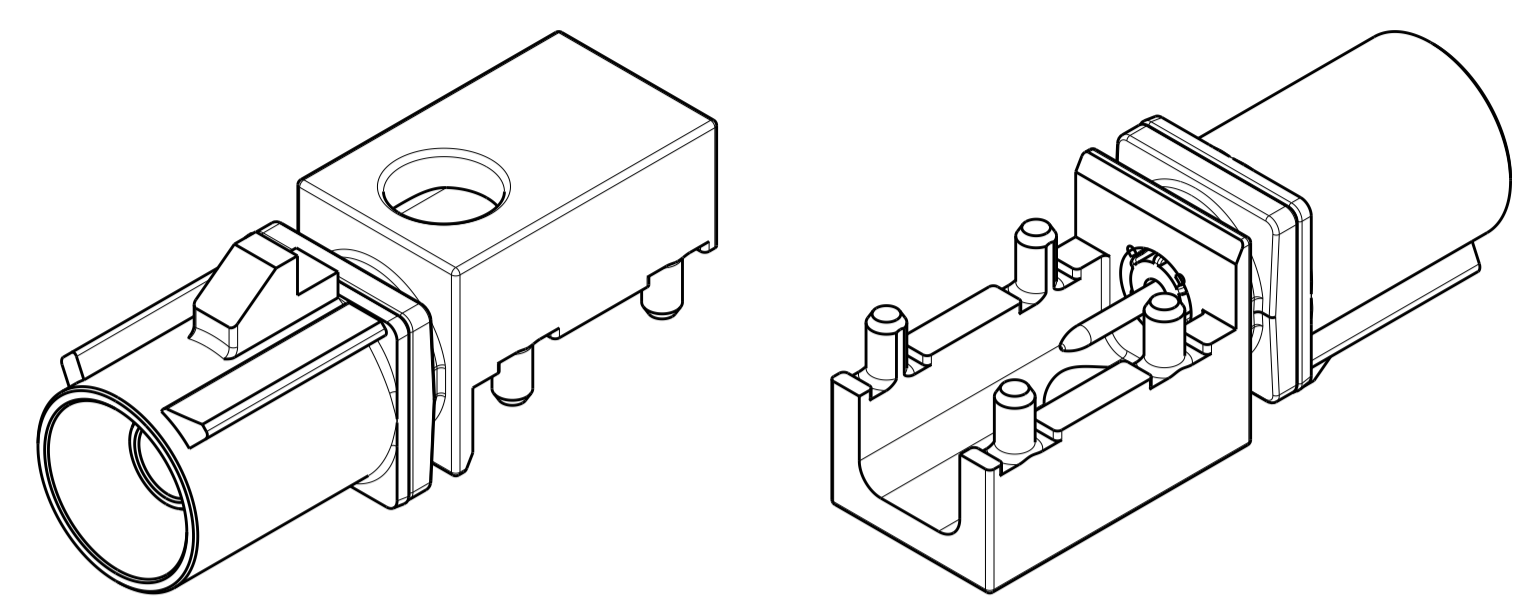
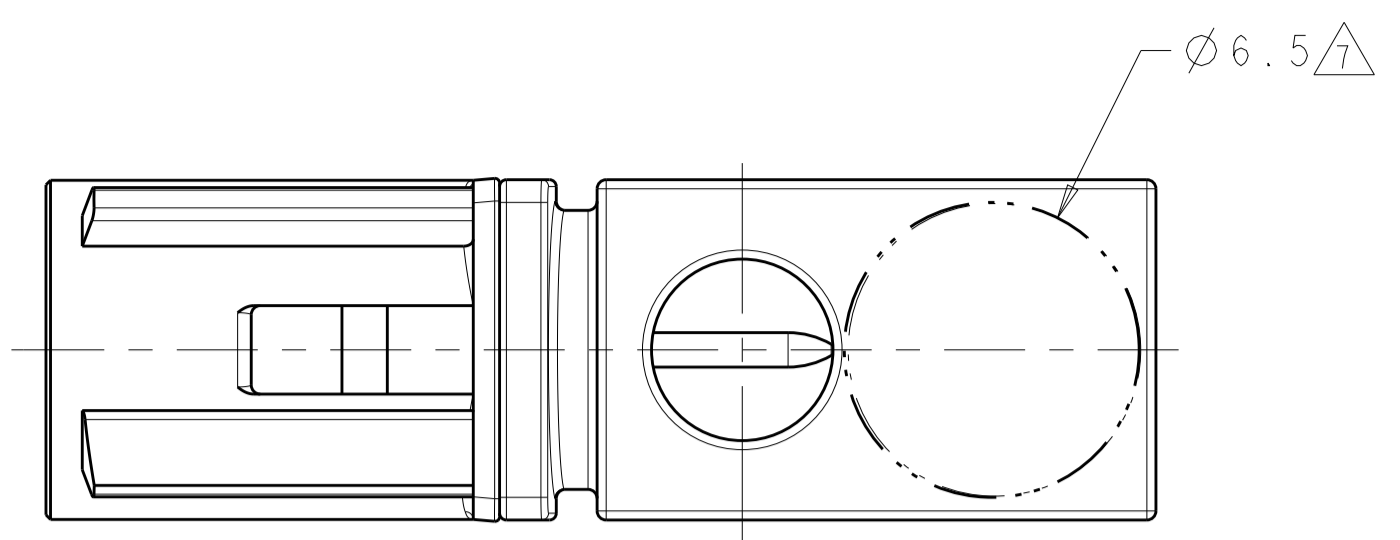




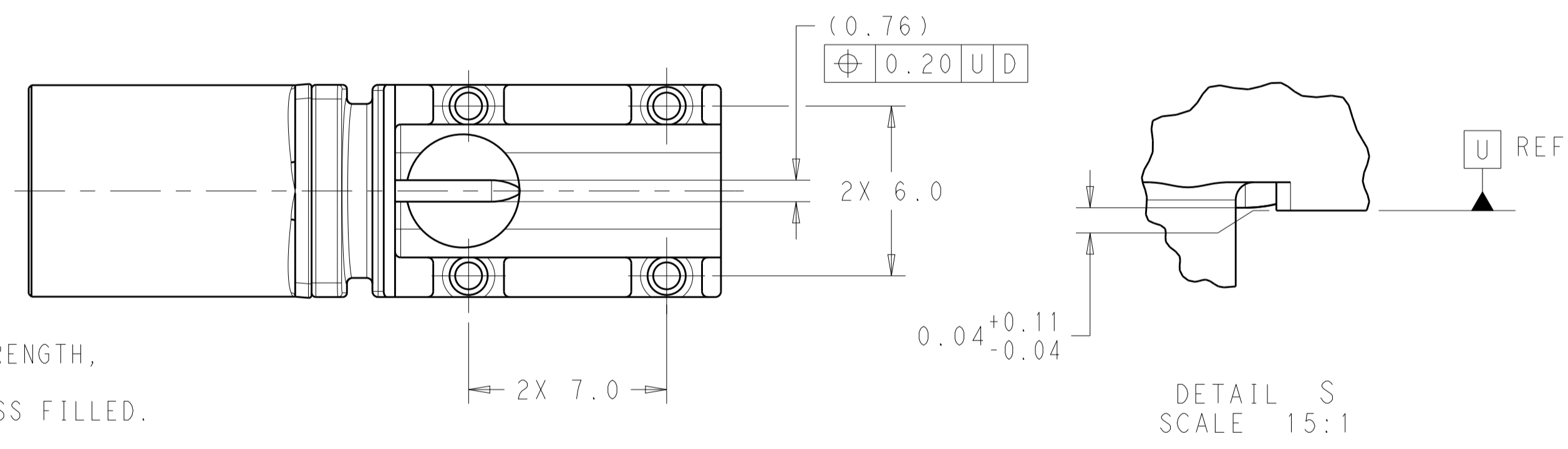
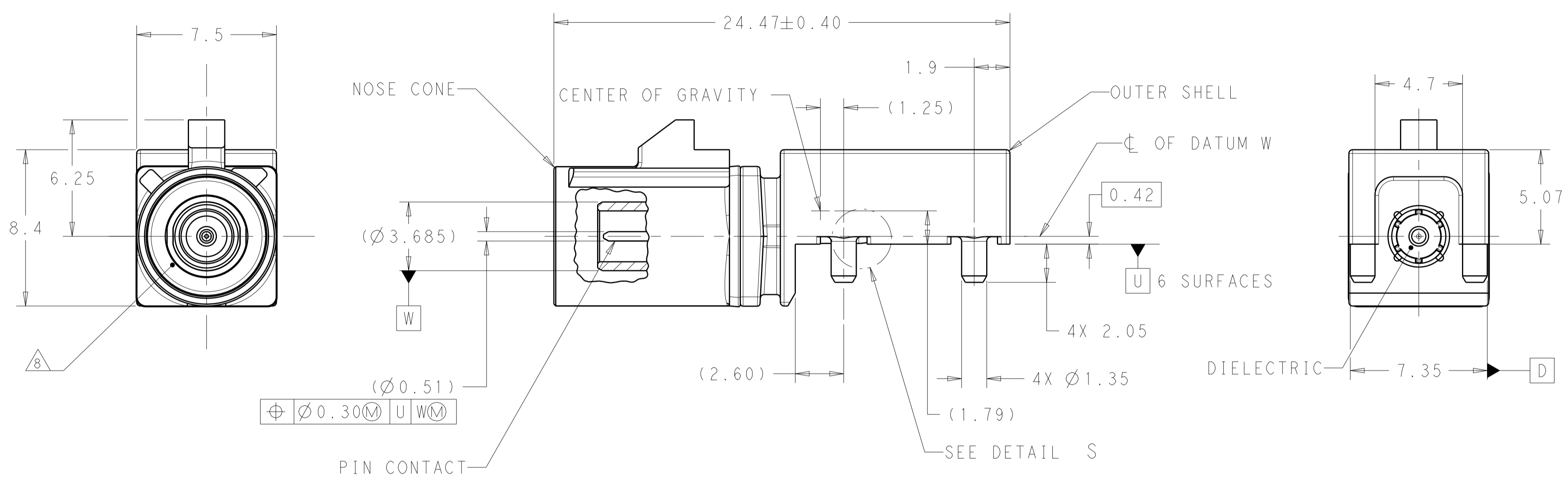
THE DATASHEET OF
5-2287906-3



REVISIONS					
P	LTN	DESCRIPTION	DATE	DWN	APVD
G1		REVISED PER ECO-16-006284	25APR2016	ERL	ERL
H		REVISED PER ECO-16-009531	24JUN2016	JAB	ERL
H1		REVISED PER ECO-20-000275	27JAN2020	KP	MB
H2		REVISED PER ECO-20-008977	26JUN2020	JMS	MB



ISOMETRIC VIEWS
SCALE 4:1



- 1 NOSE CONE - NYLON WITH INCREASED WELDLINE STRENGTH, COLOR: SEE TABLE, 30% GLASS FILLED.
DIELECTRIC - POLYESTER PCT, NATURAL, 30% GLASS FILLED.
PIN CONTACT - BRASS.
OUTER SHELL - ZINC.
- 2 PIN CONTACT - 0.38µm MIN GOLD ON INTERFACE END,
2.5µm MIN TIN ON SOLDER END,
BOTH OVER 1.3µm MIN NICKEL.
OUTER SHELL - 2.0µm MIN TIN OVER 1.52µm MIN NICKEL,
BOTH OVER 2.54µm MIN COPPER.
- 3 REMOVED
- 4 MINIMUM SIGNAL PAD FOR SOLDER.
- 5 MINIMUM RECOMMENDED GROUND PLANE.
- 6 SIGNAL DIMENSION TRACE RECOMMENDED FOR OPTIMUM SIGNAL PERFORMANCE.
- 7 VACUUM PICKUP AREA.
- 8 MALE INTERFACE PER SAE/USCAR-18 REVISION 3, ROAD VEHICLES 50 Ohm RADIO FREQUENCY INTERFACE.
- 9 REELING VIEW FOR REFERENCE ONLY TO SHOW UNREELING DIRECTION

FINISH	PACKAGING	CODING DETAIL	NOSE CONE COLOR	CODING REF	PART NUMBER
1	TAPE AND REEL	PER DETAIL Z	WATER BLUE	Z	7-2287906-0
		PER DETAIL N	PASTEL GREEN	N	6-2287906-3
		PER DETAIL M	PASTEL ORANGE	M	6-2287906-2
		PER DETAIL L	CARMINE RED	L	6-2287906-1
		PER DETAIL K	CURRY	K	6-2287906-0
		PER DETAIL I	BEIGE	I	5-2287906-9
		PER DETAIL H	HEATHER VIOLET	H	5-2287906-8
		PER DETAIL G	BLUE GREY	G	5-2287906-7
		PER DETAIL F	NUT BROWN	F	5-2287906-6
		PER DETAIL E	LEAF GREEN	E	5-2287906-5
		PER DETAIL D	CLARET VIOLET	D	5-2287906-4
		PER DETAIL C	SIGNAL BLUE	C	5-2287906-3
		PER DETAIL B	CREAM	B	5-2287906-2
		PER DETAIL A	JET BLACK	A	5-2287906-1
		PER DETAIL Z	WATER BLUE	Z	2-2287906-0
		PER DETAIL N	PASTEL GREEN	N	1-2287906-3
		PER DETAIL M	PASTEL ORANGE	M	1-2287906-2
		PER DETAIL L	CARMINE RED	L	1-2287906-1
PER DETAIL K	CURRY	K	1-2287906-0		
PER DETAIL I	BEIGE	I	2287906-9		
PER DETAIL H	HEATHER VIOLET	H	2287906-8		
PER DETAIL G	BLUE GREY	G	2287906-7		
PER DETAIL F	NUT BROWN	F	2287906-6		
PER DETAIL E	LEAF GREEN	E	2287906-5		
PER DETAIL D	CLARET VIOLET	D	2287906-4		
PER DETAIL C	SIGNAL BLUE	C	2287906-3		
PER DETAIL B	CREAM	B	2287906-2		
PER DETAIL A	JET BLACK	A	2287906-1		

THIS DRAWING IS A CONTROLLED DOCUMENT.

DIMENSIONS: mm

TOLERANCES UNLESS OTHERWISE SPECIFIED:

0 PLC ±0.15

1 PLC ±0.2

2 PLC ±0.08

3 PLC ±0.1

4 PLC ±0.1

ANGLES ±0.5

MATERIAL: SEE TABLE

FINISH: SEE TABLE

OWN: J.A. BAKER 30SEP2014

CHK: D.J. LANE 30SEP2014

APVD: D.J. LANE 30SEP2014

PRODUCT SPEC: 108-32058

APPLICATION SPEC: 114-32108

WEIGHT: 3.07g

CUSTOMER DRAWING

NAME: MALE ASSEMBLY, 1 POSITION, 12 O'CLOCK, EDGE MOUNT, PCB, FAKRA

SIZE: A

CAGE CODE: 114-32108

DRAWING NO: 100779

SCALE: 6:1

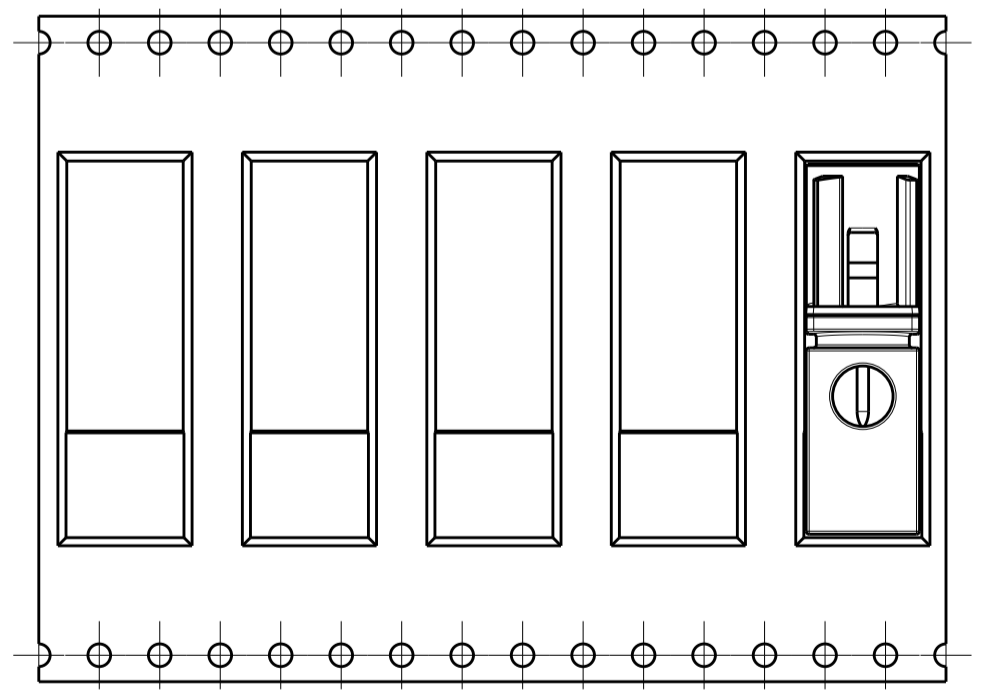
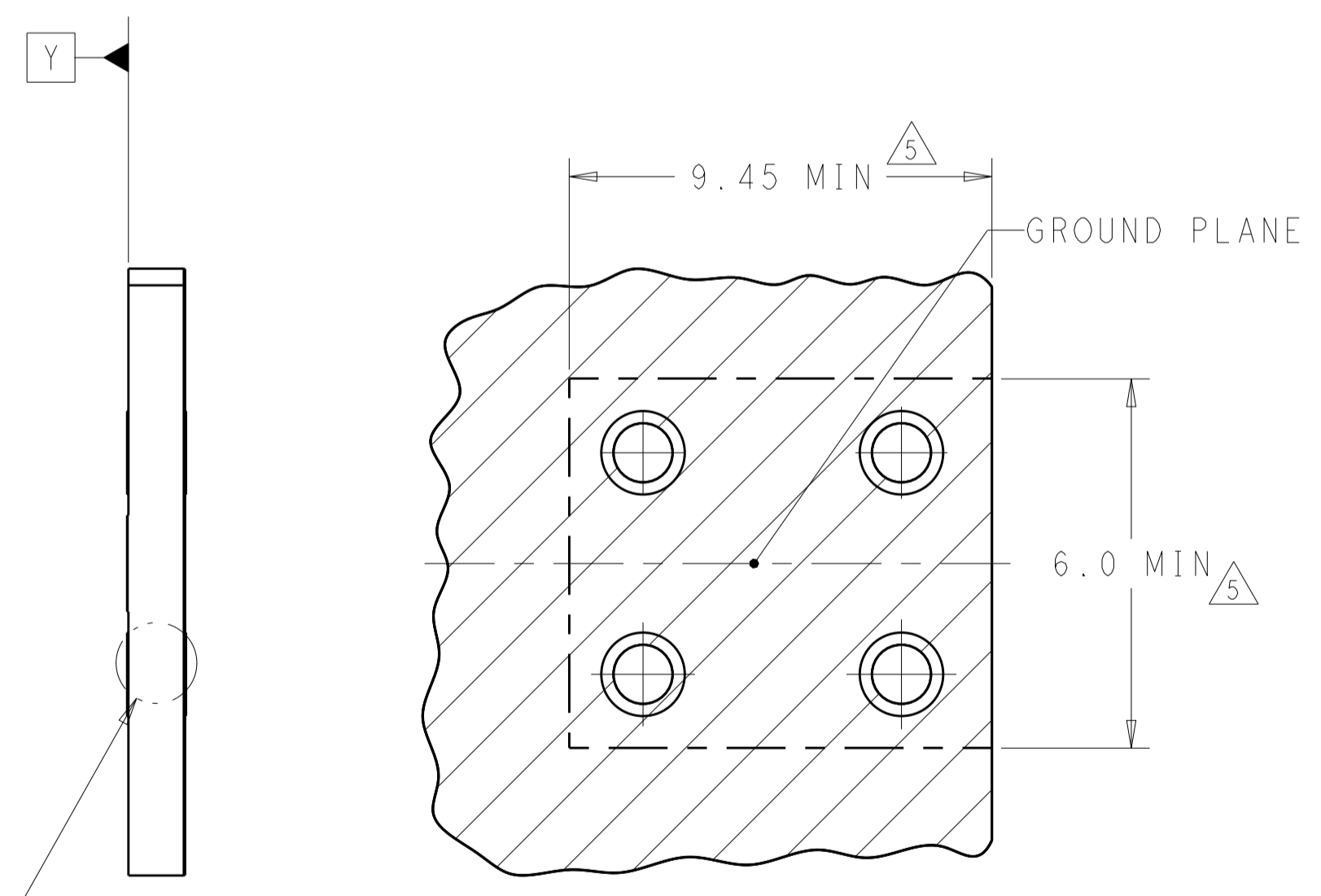
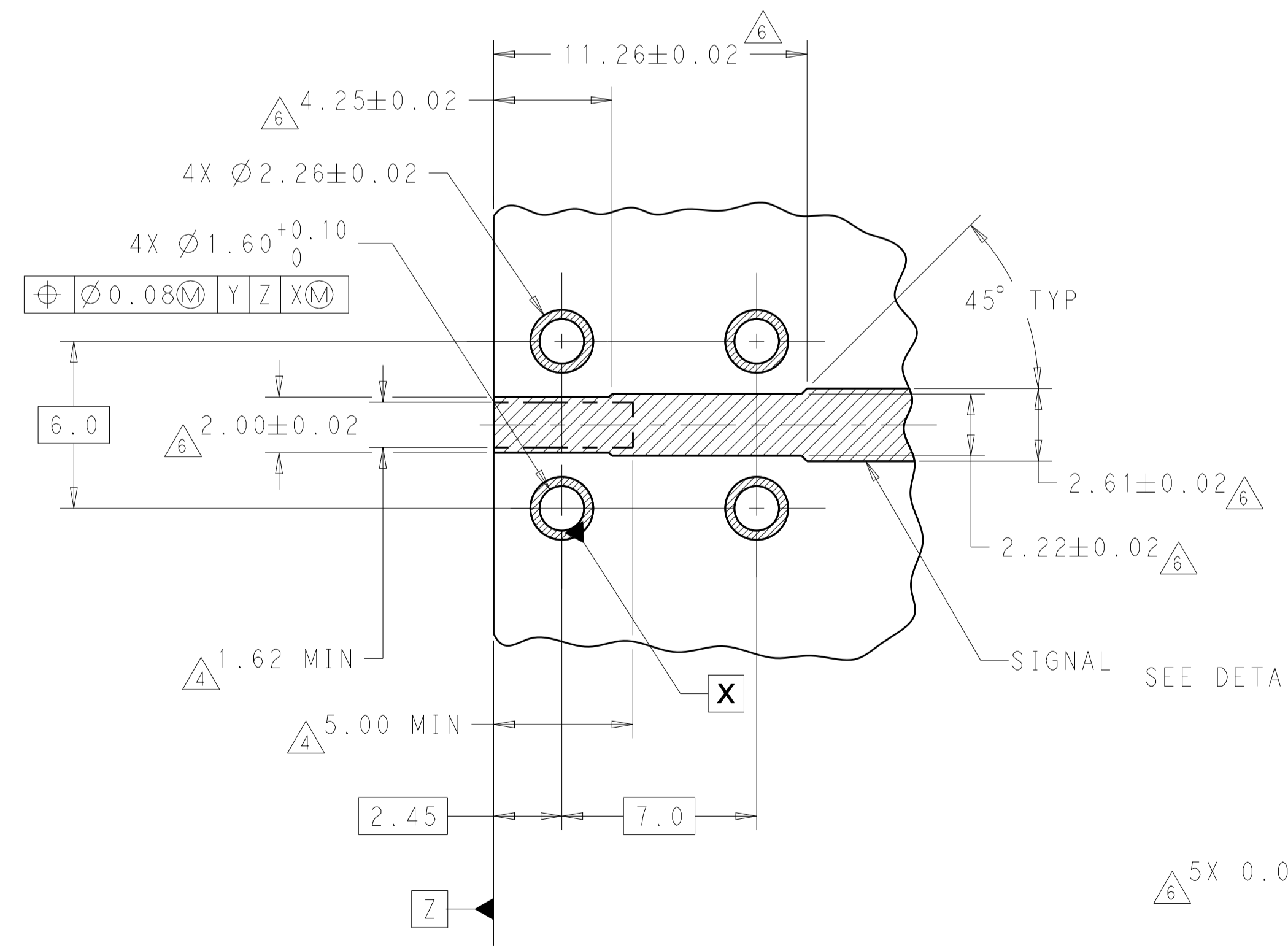
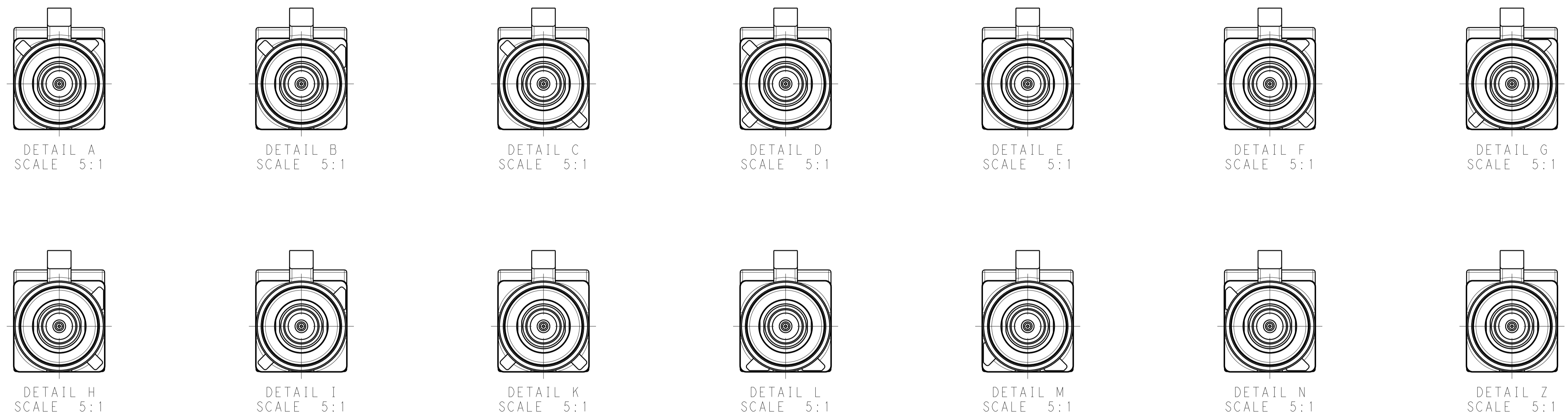
SHEET 1 OF 2

REV: H2

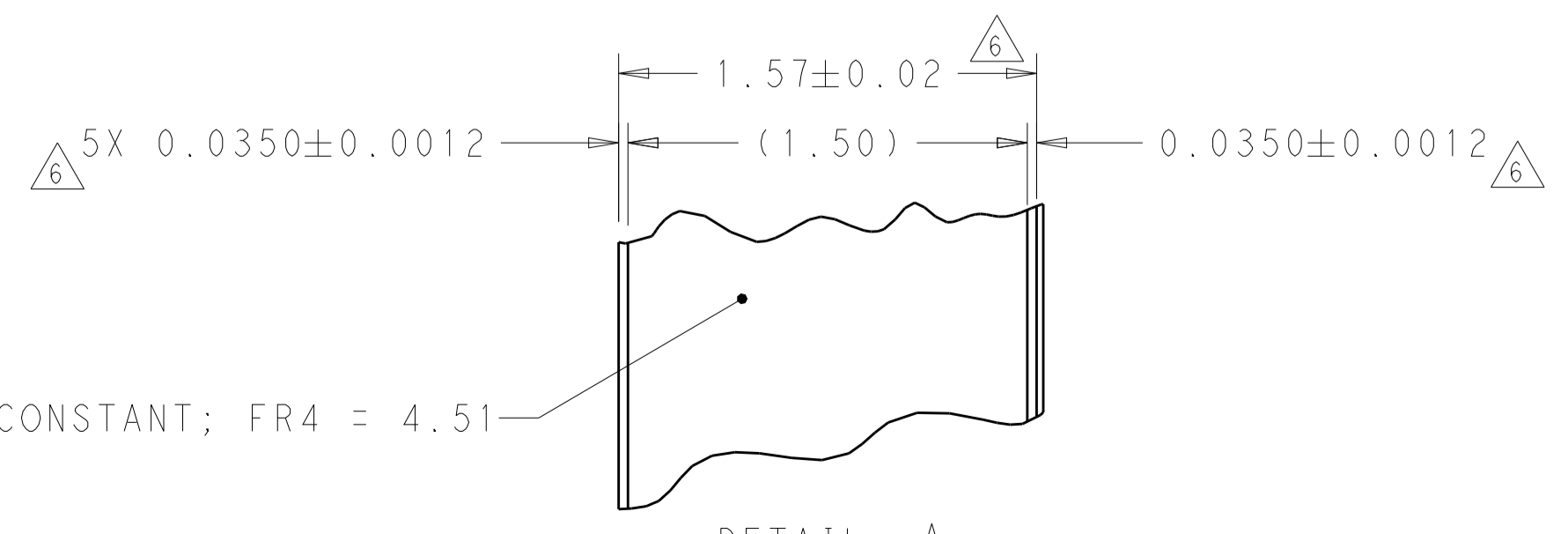
RESTRICTED TO

REVISIONS				
P.	LTN	DESCRIPTION	DATE	APVD
-	-	SEE SHEET 1	-	-

CODINGS



DIRECTION OF UNREELING
SCALE 2:1



△ MATERIAL DIELECTRIC CONSTANT; FR4 = 4.51

DETAIL A
SCALE 40:1

THIS DRAWING IS A CONTROLLED DOCUMENT.		DWN J.A.BAKER 30SEP2014 CHK D.J.LANE 30SEP2014 APVD D.J.LANE 30SEP2014	TE Connectivity
DIMENSIONS: mm 	TOLERANCES UNLESS OTHERWISE SPECIFIED: 0 PLC ± 1 PLC ±0.2 2 PLC ±0.08 3 PLC ± 4 PLC ± ANGLES ±	NAME MALE ASSEMBLY, 1 POSITION, 12 O'CLOCK, EDGE MOUNT, PCB, FAKRA PRODUCT SPEC 108-32058 APPLICATION SPEC 114-32108 WEIGHT 3.07g CUSTOMER DRAWING	
MATERIAL	FINISH	SIZE CAGE CODE DRAWING NO A100779C=2287906 SCALE 6:1 SHEET 2 OF 2 REV H2	RESTRICTED TO

Mouser Electronics

Authorized Distributor

Click to View Pricing, Inventory, Delivery & Lifecycle Information:

[TE Connectivity:](#)

[5-2287906-3](#)

Looking for pricing, stock, or lifecycle information?

Click below to explore more details on WIN SOURCE:

 [View 5-2287906-3 on WIN SOURCE](#)

 [TE Connectivity](#) Information

Optimize Your Supply Chain with WIN SOURCE Solutions

-  Global Sourcing Solution
-  Obsolete Management
-  Cost Control Management
-  Shortage Management
-  Alternative Solution
-  Excess Inventory Management