



**THE DATASHEET OF
2614960000**

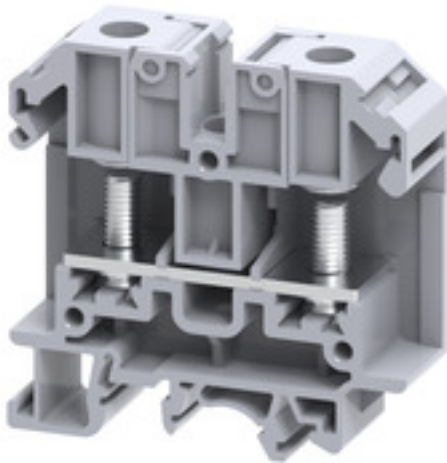


SRL 6**Weidmüller Interface GmbH & Co. KG**

Klingenbergstraße 26

D-32758 Detmold

Germany

www.weidmueller.com**Product image****Klippon® Connect with stud Technology**

Our stud terminals are an established, robust connection alternative for particularly harsh environments. The extensive accessories and quality workmanship ensure high productivity in planning and installation – and sustainable safety in operation..

General ordering data

Order No.	2614960000
Type	SRL 6
GTIN (EAN)	4050118654011
Qty.	50 pc(s).

SRL 6

Weidmüller Interface GmbH & Co. KG

Klingenbergstraße 26

D-32758 Detmold

Germany

www.weidmueller.com

Technical data

Dimensions and weights

Depth	63.1 mm	Depth (inches)	2.484 inch
Height	63.9 mm	Height (inches)	2.516 inch
Width	18 mm	Width (inches)	0.709 inch
Net weight	31 g		

Temperatures

Storage temperature	-25 °C...55 °C	Continuous operating temp., min.	120 °C
Continuous operating temp., max.	-50 °C		

Material data

Material	Polyamide	Colour	grey
----------	-----------	--------	------

System specifications

End cover plate required	Yes	Number of potentials	1
Number of levels	1	Number of clamping points per level	2
Number of potentials per tier	1	PE connection	No
Rail	TS 35, TS 32	N-function	No
PE function	No	PEN function	No

Additional technical data

Open sides	right
------------	-------

CSA rating data

Certificate number (cCSAus)	70198655	Wire cross section max. (cCSAusX)	8 AWG
Wire cross section min. (cCSAusX)	22 AWG		

Conductors for clamping (rated connection)

2 x cable lugs DIN 46 234	1.5...35 mm ²	2 x cable lugs DIN 46 235	1.5...35 mm ²
Cable lug to DIN 46234	1.5...35 mm ²	Cable lug to DIN 46235	1.5...35 mm ²
Clamping range, bolted connection , max.	35 mm ²	Clamping range, bolted connection , min.	1.5 mm ²
Connection cross-section, stranded, max.	35 mm ²	Connection cross-section, stranded, min.	1.5 mm ²
Connection direction	on side	Number of connections	2
Tightening torque, max.	3 Nm	Tightening torque, min.	3 Nm
Type of connection	Threaded stud connection	Wire connection cross section AWG, max.	AWG 2
Wire connection cross section AWG, min.	AWG 22		

General

Rail	TS 35, TS 32	Standards	IEC 60947-7-1
Wire connection cross section AWG, max.	AWG 2	Wire connection cross section AWG, min.	AWG 22

SRL 6

Weidmüller Interface GmbH & Co. KG
 Klingenbergstraße 26
 D-32758 Detmold
 Germany

www.weidmueller.com

Technical data

Rating data

Rated cross-section	35 mm ²	Rated voltage	1,000 V
Rated DC voltage	1,000 V DC	Rated current	125 A
Standards	IEC 60947-7-1	Volume resistance according to IEC 60947-7-x	0.26 mΩ
Rated impulse withstand voltage	8 kV	Power loss in accordance with IEC 60947-7-x	4 W
Pollution severity	3		

UL rating data

Certificate No. (cURus)	E60693
-------------------------	--------

Classifications

ETIM 6.0	EC000897	ETIM 7.0	EC000897
ETIM 8.0	EC000897	ECLASS 9.0	27-14-11-20
ECLASS 9.1	27-14-11-20	ECLASS 10.0	27-14-11-20
ECLASS 11.0	27-14-11-20		

Approvals

Approvals



ROHS	Conform
UL File Number Search	E60693

Downloads

Engineering Data	CAD data – STEP
User Documentation	StorageConditionsTerminalBlocks
Catalogues	Catalogues in PDF-format

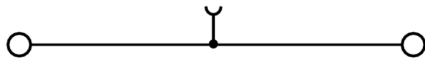
Data sheet

SRL 6

Weidmüller Interface GmbH & Co. KG
Klingenbergstraße 26
D-32758 Detmold
Germany



www.weidmueller.com

Drawings



Looking for pricing, stock, or lifecycle information?

Click below to explore more details on WIN SOURCE:

-  [View 2614960000 on WIN SOURCE](#)
-  [Weidmuller Information](#)

Optimize Your Supply Chain with WIN SOURCE Solutions

-  Global Sourcing Solution
-  Obsolete Management
-  Cost Control Management
-  Shortage Management
-  Alternative Solution
-  Excess Inventory Management