



THE DATASHEET OF
0762903022



Improve system airflow and reduce performance constraints by eliminating backplane and midplane connections with Molex's Impact™ Orthogonal Direct connector system, ideal for next-generation data and telecommunication equipment with rates up to 25 Gbps

Molex's Impact™ Orthogonal Direct connectors are designed to connect vertical to horizontal add-in cards on the mating side, without the need for a midplane. The Impact broad-edge-coupled transmission technology enables low cross-talk and high-signal bandwidth while minimizing channel-performance variation across every differential pair within the system. Impact orthogonal direct connectors leverage the fieldproven Impact mating interface (lowest mating force in the industry) and compliant-pin technologies, providing customers ultimate flexibility to optimize their designs for superior mechanical and electrical performance.

Impact™ Orthogonal Direct connectors mate with previously released Impact Orthogonal midplane daughtercard receptacles: 4-pair (series 76850), 5-pair (series 76990), 6-pair (series 76290).

For more information on Molex's Impact offering, visit: <http://www.molex.com/link/impact.html>.

FEATURES AND BENEFITS

- Designed for a direct connection of PCBs using the same daughtercard connector which improves airflow and reduces board-space constraints compared to backplane and midplane connector systems, simplifies component management for contract manufacturers and designers and reduces midplane thickness and enhances high-speed performance
- Shorter line cards and switch-module signal paths versus typical routed backplane connections allow for more overall robust signal channels
- Two compliant-pin attach options and 18 to 72 differential pairs per orthogonal node provide customers ultimate flexibility to optimize their designs for superior mechanical and electrical performance
- Broad-edge-coupled, differential-pair system has superior density, low cross-talk, low insertion loss and minimal performance variation across high-speed channels
- 4-through 6-pair configurations provide a complete range of guidance options for the PCB and mating interface plus easier PCB routing
- Data rates scalable up to 25 Gbps support future system performance upgrades
- Simple 2.15 by 1.35mm grid on both backplane and daughtercard reduces PCB routing complexity and costs and provides PCB routing flexibility
- Designed to meet IEEE 10GBASE-KR and Optical Internetworking Forum (OIF) Stat Eye Compliant channel performance requirements to ensure end-to-end channel performance compliance

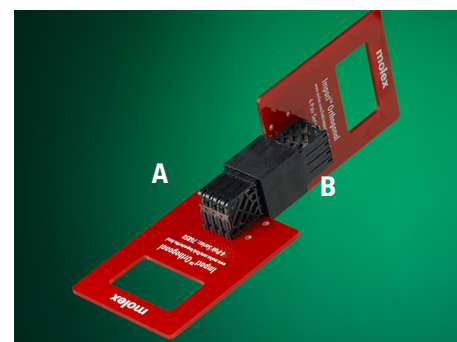
Impact™ 100-Ohm Orthogonal Direct Connector System 4- Through 6-Pair, 2.15 by 1.35mm Pitch

Right-Angle Male Connectors

- 76730 4-Pair
- 76725 5-Pair
- 76735 6-Pair

Right-Angle Daughtercard Receptacles

- 76850 4-Pair
- 76990 5-Pair
- 76290 6-Pair



A = Impact™ Orthogonal Midplane Right-Angle Daughtercard Receptacle 4-Pair (Series 76850)

B = Impact™ Orthogonal Direct Right-Angle Male Connector 4-Pair (Series 76730)

SPECIFICATIONS

Reference Information

Packaging: Tray
 UL File No.: E28179
 Mates With:
 Impact Orthogonal midplane daughtercard receptacles:
 4-Pair (series 76850)
 5-Pair (series 76990)
 6-Pair (series 76290)
 Designed In: mm
 RoHS: Yes, Compliant
 Halogen Free: Yes

Electrical

Voltage (max.): 500V AC max.
 Current (max.): 0.75A per pin
 Insulation Resistance:
 1,000 Megohms min.

Mechanical

Contact Retention to Housing:
 3.56N (.800 lb) per compliant pin average min.
 Insertion Force to PCB:
 26.7N (6.00 lb) max. per contact
 Mating Force: 35g
 Unmating Force: 15g per pin
 Durability (min.): 200 cycles

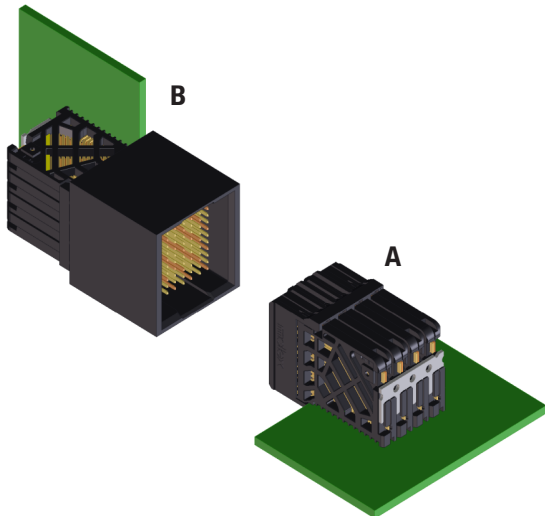
Physical

Housing:
 Liquid Crystal Polymer, UL 94V-0
 Contact:
 High Performance Copper (Cu) Alloy
 Plating:
 Contact Area — 0.76µm (30µm)
 Gold (Au) min.
 Solder Tail Area — Tin (Sn) or Tin/Lead (Sn/Pb)
 Underplating — Nickel (Ni)
 PCB Thickness: 1.60mm (.062") typical
 Operating Temperature:
 -55 to +85°C max.

ADDITIONAL PRODUCT FEATURES

- Allows for shorter channels, enhancing high-speed system
- The Impact Orthogonal Direct right-angle male connector is designed with a plastic "locking" latch on one side of the daughtercard housing to securely mate with the standard orthogonal daughtercard connector, creating an Impact orthogonal direct right-angle to right-angle connector solution

Impact™ 100-Ohm Orthogonal Direct Connector System 4- Through 6-Pair, 2.15 by 1.35mm Pitch



A = Impact™ Orthogonal Midplane Right-Angle Daughtercard Receptacle, 4-pair shown (Series 76850)

B = Impact™ Orthogonal Direct Right-Angle Male Connector, 4-pair shown (Series 76730)

APPLICATIONS

- Telecommunication equipment
 - Hubs, switches, routers
 - Central office, cellular infrastructure and multi-platform service (DSL, Cable Data)
- Data networking equipment
 - Servers
 - Storage
- Test and measurement equipment
- Medical diagnostic equipment



Medical diagnostic equipment

ORDERING INFORMATION

Right-Angle Connector

Order No.	Pairs	Guide	Rows
76730-181*	4-by-8	-	12
76730-780*		Top	
76730-980*		Bottom	
76725-111*	5-by-10	-	15
76725-710*		Top	
76725-910*		Bottom	
76735-121*	6-by-12	-	18
76735-720*		Top	
76735-920*		Bottom	

Right-Angle Daughtercard Receptacles

Order No.	Pairs	Guide	Rows
76850-10**	4-by-8	-	12
76850-30**		Left	
76850-50**		Right	
76990-10**	5-by-10	-	15
76990-30**		Left	
76990-50**		Right	
76290-10**	6-by-12	-	18
76290-30**		Left	
76290-30**		Right	

molex

www.molex.com/link/impact.html

Looking for pricing, stock, or lifecycle information?

Click below to explore more details on WIN SOURCE:

 [View 0762903022 on WIN SOURCE](#)

 [Molex, LLC Information](#)

Optimize Your Supply Chain with WIN SOURCE Solutions

-  Global Sourcing Solution
-  Obsolete Management
-  Cost Control Management
-  Shortage Management
-  Alternative Solution
-  Excess Inventory Management