

1.80 MINIMUM
.071

A

13.08 REFERENCE
.515

7.28 REFERENCE
.287

NOTES:

- 1) MATERIALS:
HOUSING - LIQUID CRYSTAL POLYMER, UL94 V-0
WAFER DIELECTRIC - LIQUID CRYSTAL POLYMER, UL
CONTACT - COPPER ALLOY
- 2) FINISHES: SEE SHEET 2
- 3) PRODUCT SPECIFICATION: THIS PART CONFORMS TO
- 4) PACKAGING SPECIFICATION: THIS PART TO BE PACKED
- 5) APPLICATION SPECIFICATION: THIS PART TO BE APPLIED
APPLICATION TOOL AND INSTRUCTIONS PER AS-7501
- 6) MATING INFORMATION
THIS PART MATES WITH 75019-XXXX.
WILL MATE WITH MAXIMUM 127mm MIS-ALIGNMENT.
WILL MATE WITH MAXIMUM 0.5° MIS-ALIGNMENT.
- 7) FOR CIRCUIT DESIGNATION SEE SHEET 3
- 8) FOR PCB INFORMATION SEE SHEET 3
- 9) CIRCUITS IN THIS ZONE HAVE BEEN OMITTED TO SIMULATE
FULLY LOADED WITH TERMINALS.
- 10) APPLICATION TOOLING KEEP OUT AREA, NO COMPONENTS
- 11) CONFORMS TO MOLEX COSMETIC SPECIFICATION PS-2
- 12) MARKING: PART NUMBER, MOLEX LOGO, DATE CODE
- 13) RECOMMENDED DRILL SIZE 0.66±0.03 TO YIELD FINISH

DIM 'C' REFERENCE
DIM 'C'

DIM 'C' - 10.40 REFERENCE
DIM 'C' - .409

75018-XXXX
molex dddy

MARKING
SEE NOTE 12

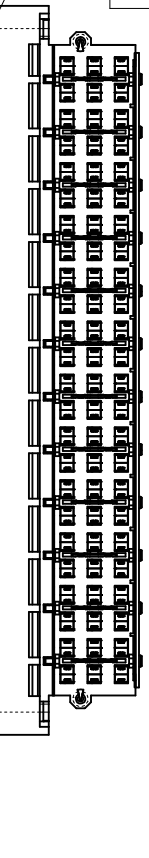
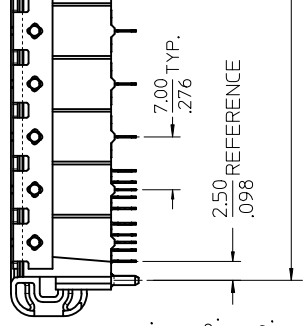
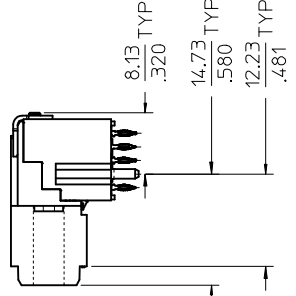
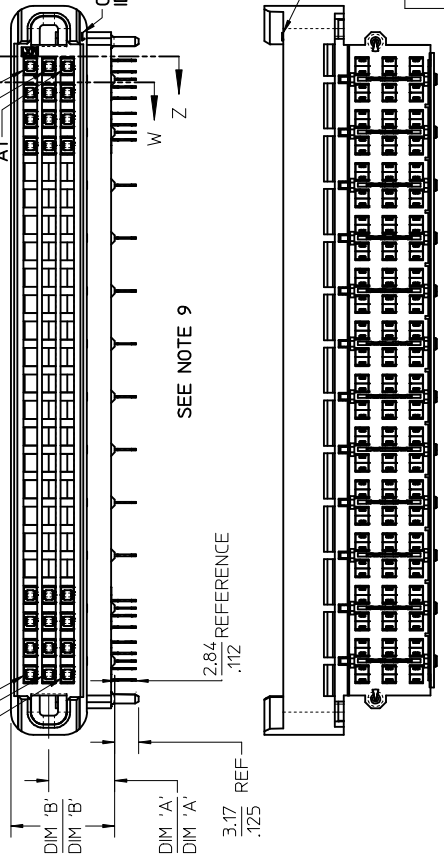
C(N)
B(N)
A(N)

DIM 'B'
DIM 'B'

DIM 'A'
DIM 'A'

2.84 REFERENCE
.112

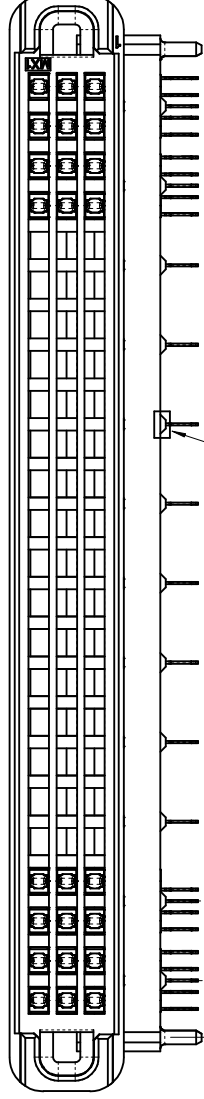
SEE NOTE 9



CLARIFY DIMENSIONS		EC NO: UCP2016-2525		DRWN:1BARRA 2015/12/18		CHKD:MCAIN 2015/12/18		APP:SMILLER 2015/12/22		REV	
QUALITY SYMBOLS		DESCRIPTION		CIRCUIT A1 IDENTIFIER		CIRCUIT A1 IDENTIFIER		CIRCUIT A1 IDENTIFIER		CIRCUIT A1 IDENTIFIER	
▽=0	▽=0	▽=0	▽=0	▽=0	▽=0	▽=0	▽=0	▽=0	▽=0	▽=0	▽=0
GENERAL TOLERANCES (UNLESS SPECIFIED)		INCH		MM		INCH		MM		MM/IN	
4 PLACES ±---		±---		±---		±---		±---		DRAWN BY RWH/PPLE	
3 PLACES ±---		±.005		±.005		±.005		±.005		CHECKED BY	
2 PLACES ±0.13		±.01		±.01		±.01		±.01		APPROVED BY	
1 PLACE ±0.25		±---		±---		±---		±---		SMILLER	
0 PLACE ±---		±---		±---		±---		±---		DATE 2013/11/19	
ANGULAR ±1/2°		ANGULAR ±1/2°		ANGULAR ±1/2°		ANGULAR ±1/2°		ANGULAR ±1/2°		MATERIAL NO.	
DRAFT WHERE APPLICABLE		DRAFT WHERE APPLICABLE		DRAFT WHERE APPLICABLE		DRAFT WHERE APPLICABLE		DRAFT WHERE APPLICABLE		SEE TABLE	
MUST REMAIN WITHIN DIMENSIONS		MUST REMAIN WITHIN DIMENSIONS		MUST REMAIN WITHIN DIMENSIONS		MUST REMAIN WITHIN DIMENSIONS		MUST REMAIN WITHIN DIMENSIONS		SIZE THIS DRAWING CONTAINED AND INCORPORATED AND SI	

13 12 11 10 9 8 7 6 5 4

ITEM NUMBER	CIRCUIT SIZE	NO. OF COLUMNS 'N'	PLATING FINISH	CENTERLINE DIMENSION 'A', mm(in)	O/A HEIGHT DIMENSION 'B', mm(in)	O/A LENGTH DIMENSION 'C', mm(in)	PEG TO PEG DIMENSION 'D', mm(in)	FIRST-LAST DIMENSION 'E', mm(in)
75018-5021	144	24	FINISH 1	4.74 (.187)	9.78 (.385)	96.50 (3.799)	87.00 (3.425)	82.00 (3.228)
75018-5022	144	24	FINISH 1	5.74 (.226)	10.78 (.424)	96.50 (3.799)	87.00 (3.425)	82.00 (3.228)
75018-5023	144	24	FINISH 1	8.74 (.344)	13.78 (.543)	96.50 (3.799)	87.00 (3.425)	82.00 (3.228)
75018-5024	108	18	FINISH 1	4.74 (.187)	9.78 (.385)	75.50 (2.972)	66.00 (2.598)	61.00 (2.402)
75018-5025	108	18	FINISH 1	8.74 (.344)	13.78 (.543)	75.50 (2.972)	66.00 (2.598)	61.00 (2.402)
75018-5026	120	20	FINISH 1	4.74 (.187)	9.78 (.385)	82.50 (3.248)	73.00 (2.874)	68.00 (2.677)
75018-5027	108	18	FINISH 1	5.74 (.226)	10.78 (.424)	75.50 (2.972)	66.00 (2.598)	61.00 (2.402)
75018-5029	120	20	FINISH 1	5.74 (.226)	10.78 (.424)	82.50 (3.248)	73.00 (2.874)	68.00 (2.677)
75018-5221	144	24	FINISH 2	4.74 (.187)	9.78 (.385)	96.50 (3.799)	87.00 (3.425)	82.00 (3.228)
75018-5224	108	18	FINISH 2	4.74 (.187)	9.78 (.385)	75.50 (2.972)	66.00 (2.598)	61.00 (2.402)



5.00 REFERENCE
.197

7.00 REFERENCE
.276 TYPICAL

SEE DETAIL B

3.38 REFERENCE
.133 TYPICAL

1) PLATING FINISHES:

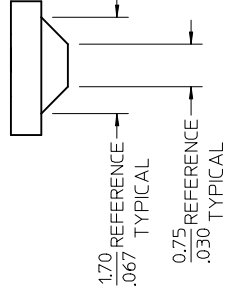
FINISH 1:

- CONTACT INTERFACE
- 0.76 MICROMETERS/30 MICROINCHES MINIMUM SELECT GOLD
- NICKEL UNDERPLATE OVERALL
- COMPLIANT INTERFACE
- 0.76 MICROMETERS/30 MICROINCHES MINIMUM SELECT MATTE-TIN OVER
- NICKEL UNDERPLATE OVERALL
- HOUSING

- 3.81 MICROMETERS/150 MICROINCHES MINIMUM NICKEL OVER
- COPPER UNDERPLATE OVERALL

FINISH 2:

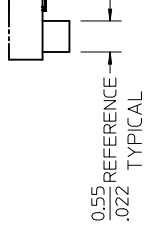
- CONTACT INTERFACE
- 0.76 MICROMETERS/30 MICROINCHES MINIMUM SELECT GOLD
- NICKEL UNDERPLATE OVERALL
- COMPLIANT INTERFACE
- 0.76 MICROMETERS/30 MICROINCHES MINIMUM SELECT MATTE-TIN OVER
- NICKEL UNDERPLATE OVERALL
- HOUSING
- 0.10 MICROMETERS/4 MICROINCHES MAXIMUM GOLD OVER
- 3.81 MICROMETERS/150 MICROINCHES MINIMUM NICKEL OVER
- COPPER UNDERPLATE OVERALL



1.70 REFERENCE
.067 TYPICAL

0.75 REFERENCE
.030 TYPICAL

DETAIL A
SCALE 15:1



0.55 REFERENCE
.022 TYPICAL

DETAIL B
SCALE 15:1

QUALITY SYMBOLS	GENERAL TOLERANCES (UNLESS SPECIFIED)	DIMENSION STYLE
$\nabla = 0$	4 PLACES \pm ---	MM/IN
$\nabla = 0$	3 PLACES \pm ---	DRAWN BY RMH/PPLE
$\nabla = 0$	2 PLACES ± 0.13	DATE 2013/11/05
	1 PLACE ± 0.25	CHECKED BY
	0 PLACE \pm	DATE
	ANGULAR $\pm 1/2^\circ$	APPROVED BY
	DRAFT WHERE APPLICABLE	SMILLER
	MUST REMAIN WITHIN DIMENSIONS	MATERIAL NO.
		DATE 2013/11/19

DESCRIPTION	DATE
APP:SMILLER	2015/12/22
CHK:DMC/AIN	2015/12/18
DRW:N-TIBARRA	2015/12/18
EC NO: UCP2016-2525	
SEE SHEET 1	

SEE TABLE

THIS DRAWING CONTAINS INCORPORATED AND S

12 11 10 9 8 7 6 5 4

Looking for pricing, stock, or lifecycle information?

Click below to explore more details on WIN SOURCE:

 [View 0750185221 on WIN SOURCE](#)

 [Molex, LLC Information](#)

Optimize Your Supply Chain with WIN SOURCE Solutions

-  Global Sourcing Solution
-  Obsolete Management
-  Cost Control Management
-  Shortage Management
-  Alternative Solution
-  Excess Inventory Management