



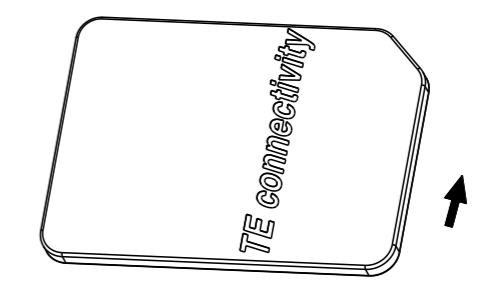
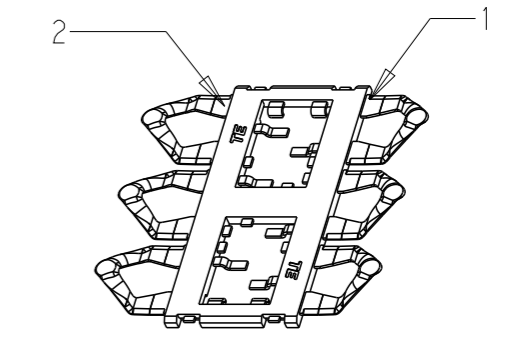
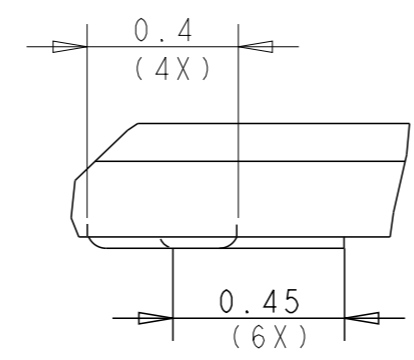
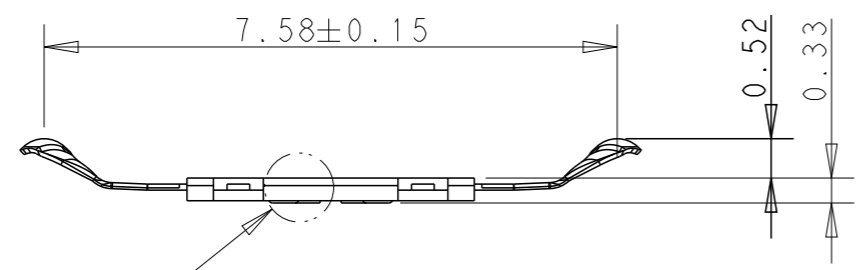
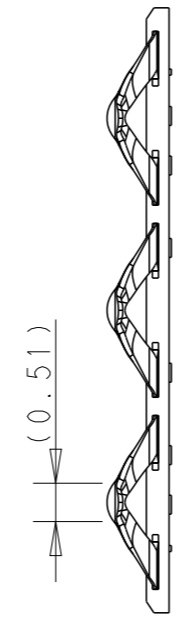
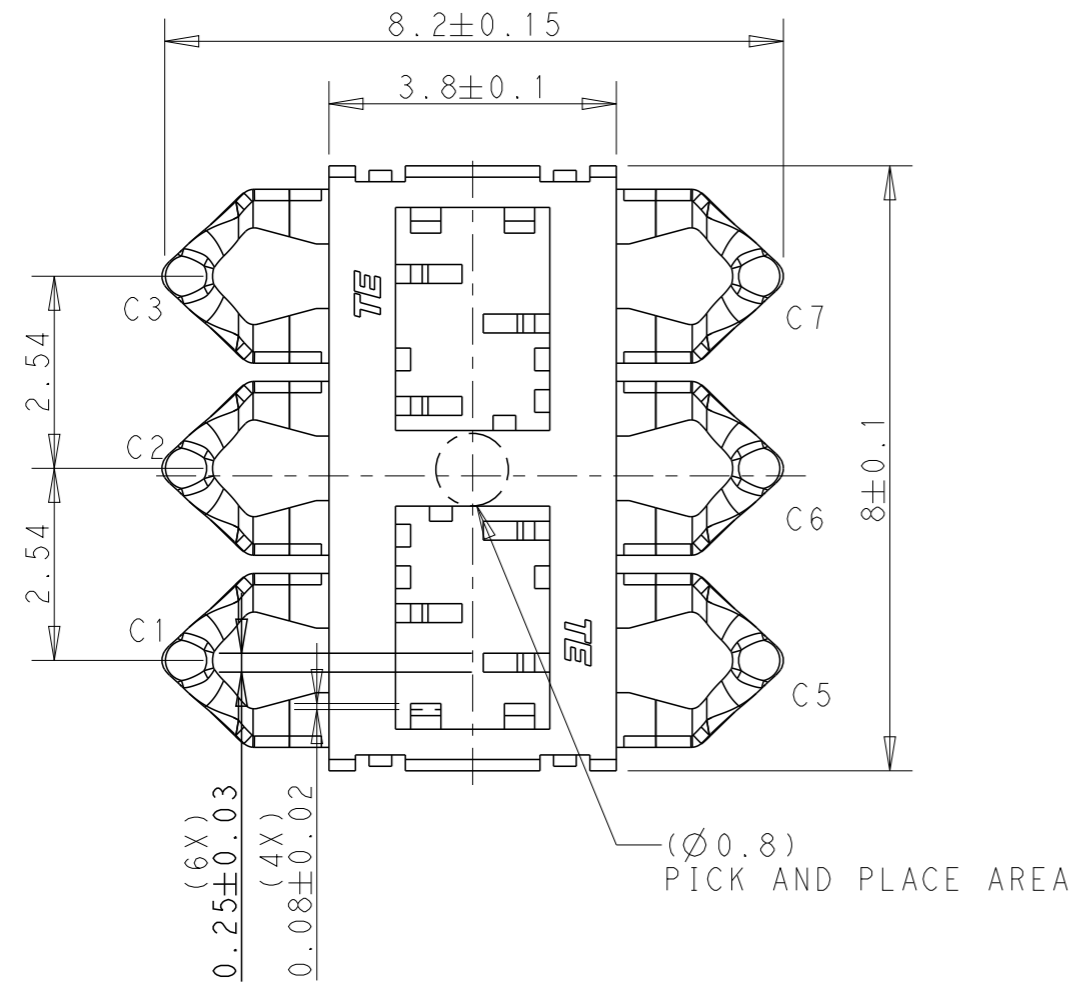
THE DATASHEET OF
2287217-1



THIS DRAWING IS UNPUBLISHED. RELEASED FOR PUBLICATION 20
 © COPYRIGHT 20 BY - ALL RIGHTS RESERVED.

REVISIONS				
P	LTR	DESCRIPTION	DATE	APVD
A		THE OFFICIAL VERSION RELEASED	27-Feb-15	E.F. C.W.

- NOTES:
- 1 HOUSING MATERIAL: THERMO PLASTIC RESIN.
 - 2 CONTACT MATERIAL: COPPER ALLOY.
 - 2 FINISH :
 50u" MIN. NICKEL UNDERPLATING ALL OVER,
 GOLD PLATING 2u" MIN. ON CONTACT AREA
 12u" MIN. Pd/Ni ON CONTACT AREA
 GOLD PLATING 1u" MIN. ON SOLDER AREA
 - 3 COPLANARITY: 0.08MAX. (BEFORE IR)
 - 4 DATE CODE:
 YWWDSSL (YEAR, WEEK, DAY, SHIFT, LINE)



CARD INSERTION DIRECTION

SEE DETAIL A

DETAIL A
SCALE 50:1

2287217-1	2	CONTACT	2
	1	HOUSING	1
P/N	ITEM	COMPONENT	MATERIAL/FINISH

THIS DRAWING IS A CONTROLLED DOCUMENT.		DWN E.F. 27-Feb-15		
DIMENSIONS: mm		CHK S.L. 27-Feb-15		
TOLERANCES UNLESS OTHERWISE SPECIFIED:		APVD C.W. 27-Feb-15	NAME	
0 PLC ±- 1 PLC ±0.1 2 PLC ±0.05 3 PLC ±0.02 4 PLC ±- ANGLES ±-		PRODUCT SPEC 108-115090	ANTI-BUCKLING BLOCK SIM CONNECTOR SIDE ENTRY TYPE	
MATERIAL -		APPLICATION SPEC -	SIZE A3	CAGE CODE 00779
FINISH -		WEIGHT 0.026g	DRAWING NO C-2287217	RESTRICTED TO -
		CUSTOMER DRAWING	SCALE 10:1	SHEET 1 OF 2
				REV A

THIS DRAWING IS UNPUBLISHED. RELEASED FOR PUBLICATION 20
 © COPYRIGHT 20 BY - ALL RIGHTS RESERVED.

REVISIONS					
P	LTR	DESCRIPTION	DATE	DWN	APVD
A		THE OFFICIAL VERSION RELEASED	27-Feb-15	E.F.	C.W.

D

D

C

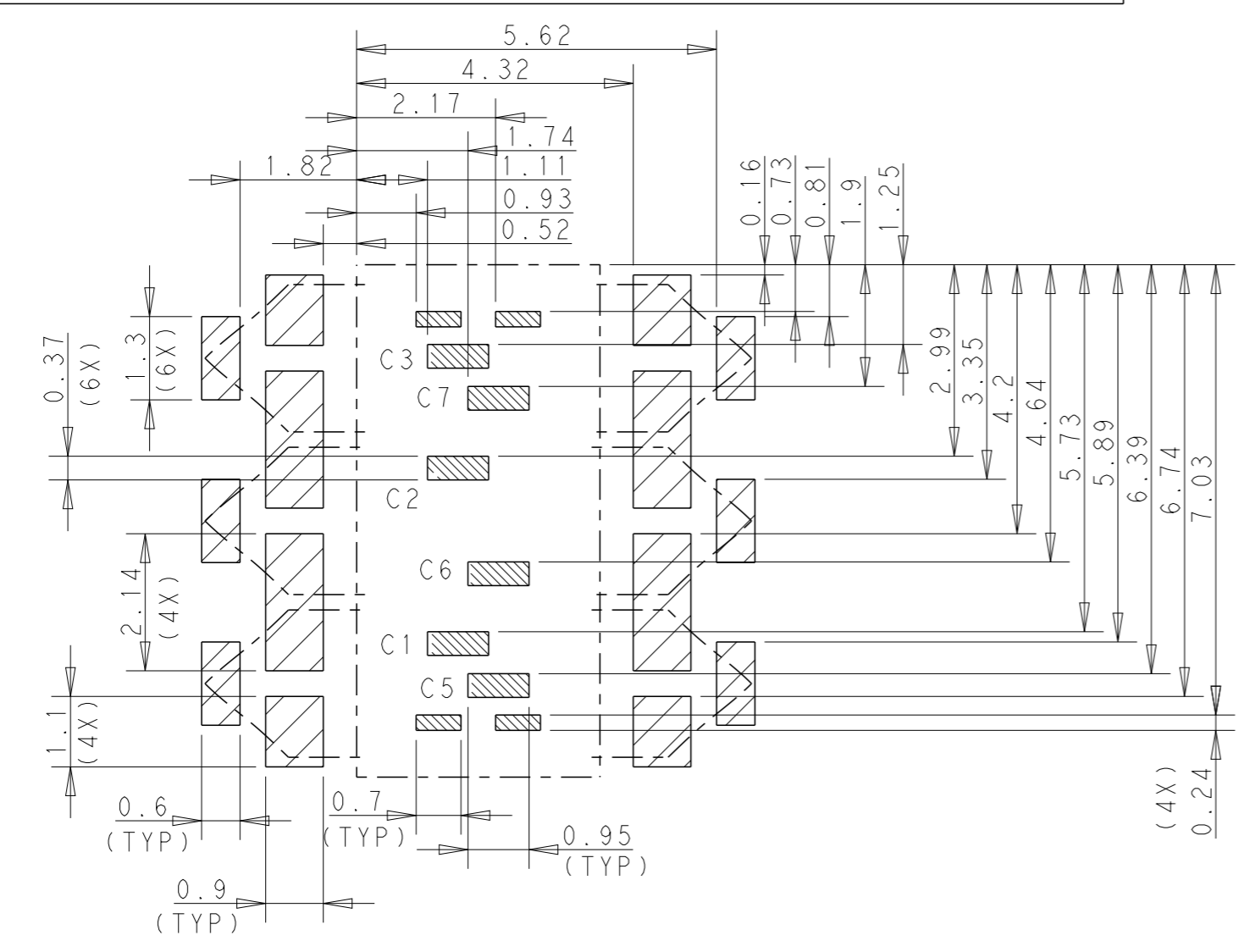
C

B

B

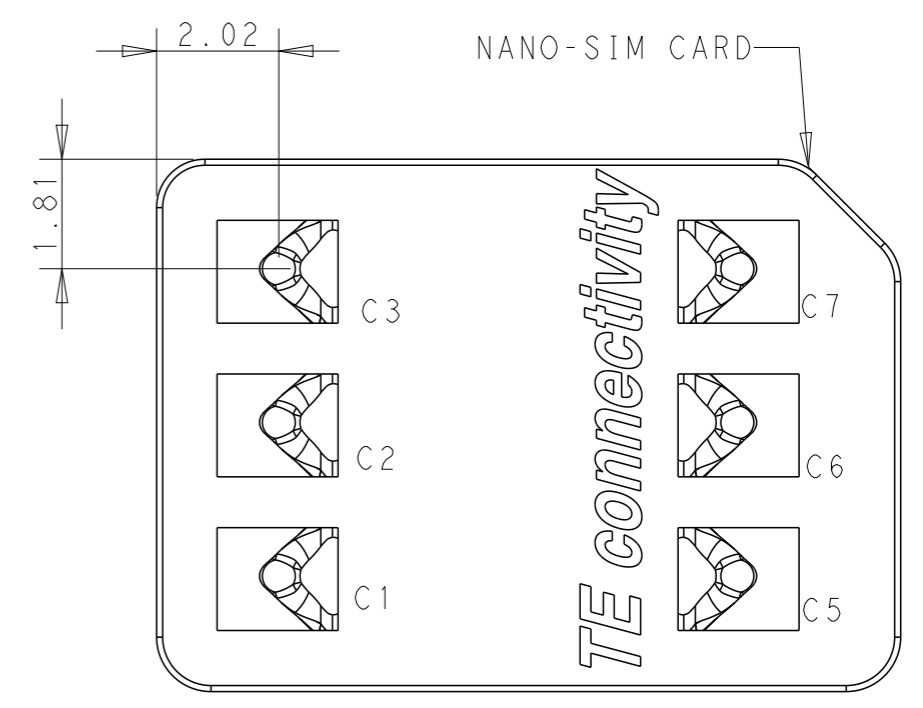
A

A



REFERENCE P.C. BOARD LAYOUT
 (P.C.B. TOLERANCE: ±0.05)

- SOLDER AREA
- COPPER FOIL REMOVE & SOLDER MASK KEEP OUT (DEPTH: 0.05~0.10MM)
- CONNECTOR BOUNDARY



REFERENCE INSERTION SITUATION
 NANO-SIM CARD

THIS DRAWING IS A CONTROLLED DOCUMENT.		DWN E.F.	27-Feb-15		
DIMENSIONS: mm		CHK S.L.	27-Feb-15		
TOLERANCES UNLESS OTHERWISE SPECIFIED:		APVD C.W.	27-Feb-15	NAME ANTI-BUCKLING BLOCK SIM CONNECTOR SIDE ENTRY TYPE	
 0 PLC ±- 1 PLC ±0.1 2 PLC ±0.05 3 PLC ±0.02 4 PLC ±- ANGLES ±-		PRODUCT SPEC 108-115090		DRAWING NO C-2287217	
MATERIAL -		FINISH -		WEIGHT 0.026g	RESTRICTED TO -
CUSTOMER DRAWING				SCALE 10:1	SHEET 2 OF 2
				REV A	

Looking for pricing, stock, or lifecycle information?

Click below to explore more details on WIN SOURCE:

 [View 2287217-1](#) on WIN SOURCE

 [TE Connectivity](#) Information

Optimize Your Supply Chain with WIN SOURCE Solutions

-  Global Sourcing Solution
-  Obsolete Management
-  Cost Control Management
-  Shortage Management
-  Alternative Solution
-  Excess Inventory Management