

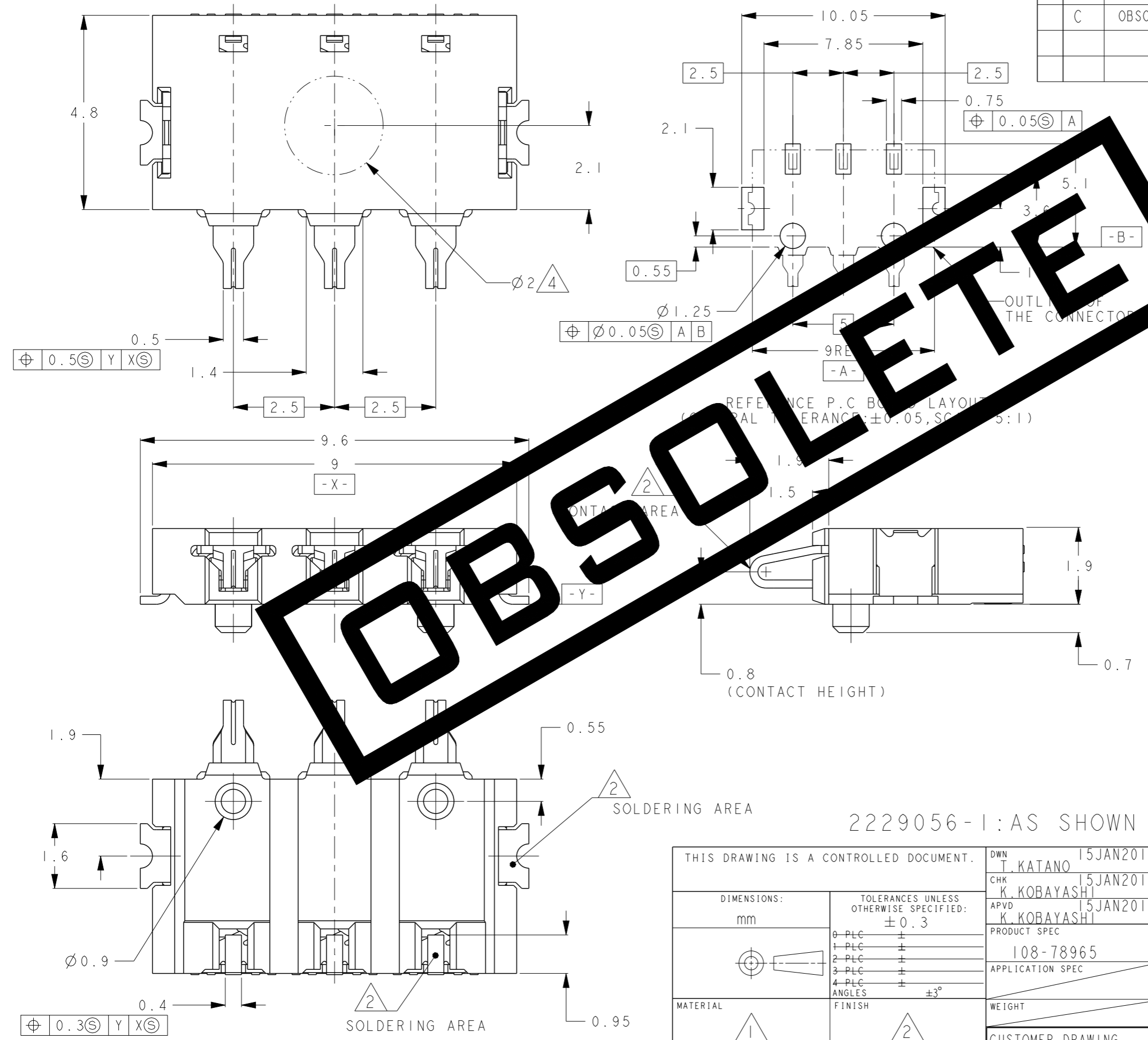


THE DATASHEET OF
2229056-1



THIS DRAWING IS UNPUBLISHED. RELEASED FOR PUBLICATION 2012
 © COPYRIGHT 2012 BY - ALL RIGHTS RESERVED.

LOC	DIST	REVISIONS			
P	LTR	DESCRIPTION	DATE	DWN	APVD
J	-				
	B	REVISED	ECR-13-003830	11MAR2013	T.K K.K
	C	OBSOLETE ECR-17-017873		18DEC2017	AL WH



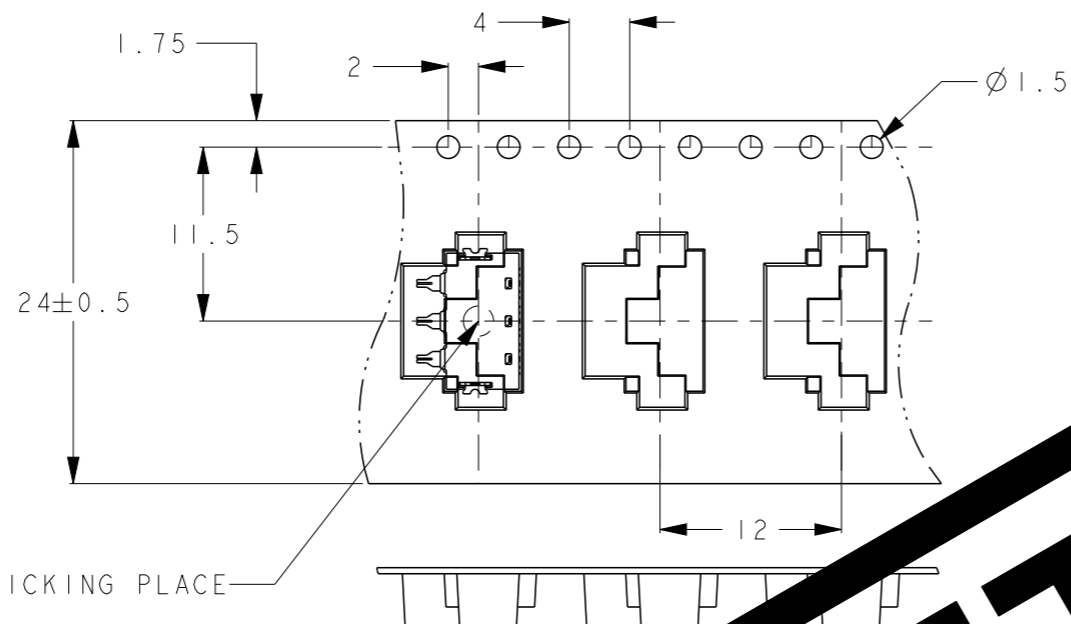
- △ MATERIAL
 CONTACT: COPPER ALLOY
 HOUSING: THERMOPLASTIC, UL94V-0, BLACK
 SOLDER PEG: COPPER ALLOY
- △ FINISH
 CONTACT: NICKEL ALL OVER UNDER PLATING
 THICKNESS, 1μm MIN.
 GOLD PLATING AT CONTACT AREA
 THICKNESS, 0.3μm MIN.
 GOLD FLASH PLATING AT SOLDERING AREA
 THICKNESS, 0.05μm MIN.
 SOLDER PEG: NICKEL ALL OVER UNDER PLATING
 THICKNESS, 1μm MIN.
 GOLD FLASH PLATING AT SOLDERING AREA
 THICKNESS, 0.05μm MIN.
- 3. COPLANARITY 0.1MAX.
- △ PICK UP AREA
- 5. EMOSS AND COVER TAPE : ESD PROTECTION MATERIAL
- 6. STORAGE LIFE: UNDER 6 MONTHS
 WITHOUT DRYPACK AND BAKING PROCESS

2229056-1: AS SHOWN

THIS DRAWING IS A CONTROLLED DOCUMENT.		DWN T. KATANO 15JAN2013	TE Connectivity	
		CHK K. KOBAYASHI 15JAN2013		
		APVD K. KOBAYASHI 15JAN2013	NAME	
DIMENSIONS: mm		PRODUCT SPEC 108-78965	LOW PROFILE BATTERY CONNECTOR 3 POS. CONTACT HEIGHT 0.8mm	
TOLERANCES UNLESS OTHERWISE SPECIFIED: ±0.3		APPLICATION SPEC	RESTRICTED TO	
0-PLC ± 1-PLC ± 2-PLC ± 3-PLC ± 4-PLC ± ANGLES ±3°		WEIGHT	SIZE A300779	CAGE CODE C-2229056
MATERIAL △1		CUSTOMER DRAWING	SCALE 10:1	SHEET 1 OF 2
FINISH △2				REV C

P	LTR	DESCRIPTION	DATE	DWN	APVD
	-	SEE SHEET 1	-	-	-

→ DIRECTION OFF TOP OF REEL



CENTER OF THE PICKING PLACE

FLANGE CORE DIA
Ø100REF

Ø330REF
REEL DIA.

30.4 REF
REEL WIDTH

24.4REF

300REF
WITHOUT CHARGE

WITH PRODUCT CHARGE
1400PCS/REEL

WITHOUT CHARGE
20HOLES MIN.

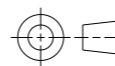
300 REF
WEED THE COVER TAPE.

165°~180°
PEELING ANGLE
0.1~0.7N(300mm/min)
PEELING STRENGTH

OBSCOLETE

THIS DRAWING IS A CONTROLLED DOCUMENT.

DIMENSIONS:
mm



TOLERANCES UNLESS
OTHERWISE SPECIFIED:
±0.3

Ø PLC	±
1 PLC	±
2 PLC	±
3 PLC	±
4 PLC	±
ANGLES	±3°
FINISH	

MATERIAL

DWN
CHK
APVD
PRODUCT SPEC
APPLICATION SPEC
WEIGHT
CUSTOMER DRAWING



TE Connectivity

NAME
LOW PROFILE BATTERY CONNECTOR 3 POS.
CONTACT HEIGHT 0.8mm

SIZE	CAGE CODE	DRAWING NO	RESTRICTED TO
A300779	C	2229056	

SCALE	SHEET	OF	REV
2:1	2	2	C

Looking for pricing, stock, or lifecycle information?

Click below to explore more details on WIN SOURCE:

 [View 2229056-1](#) on WIN SOURCE

 [TE Connectivity](#) Information

Optimize Your Supply Chain with WIN SOURCE Solutions

-  Global Sourcing Solution
-  Obsolete Management
-  Cost Control Management
-  Shortage Management
-  Alternative Solution
-  Excess Inventory Management