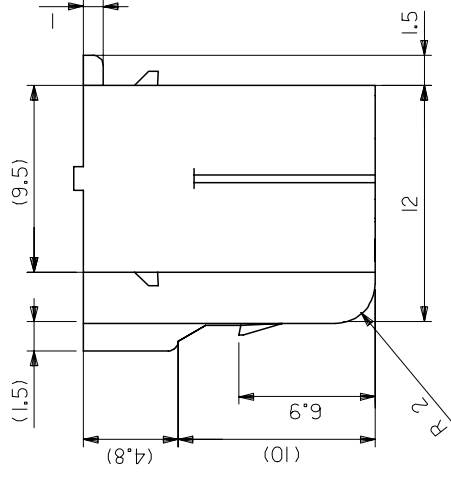
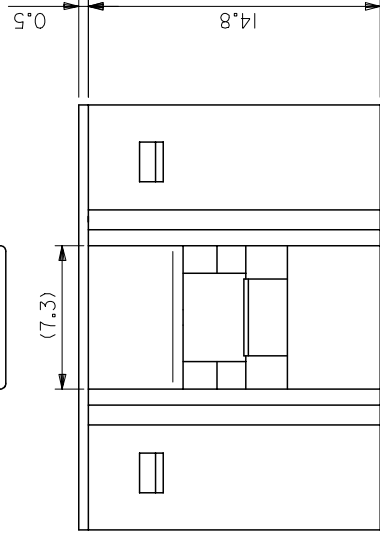
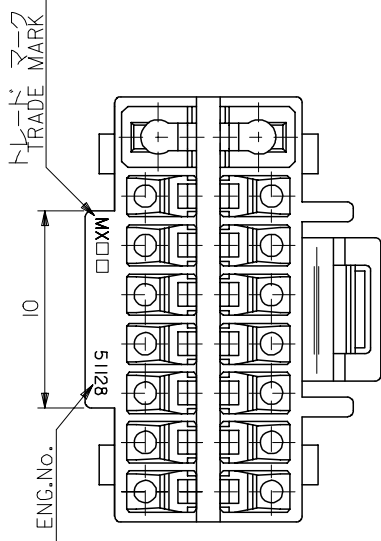




THE DATASHEET OF
0511281601



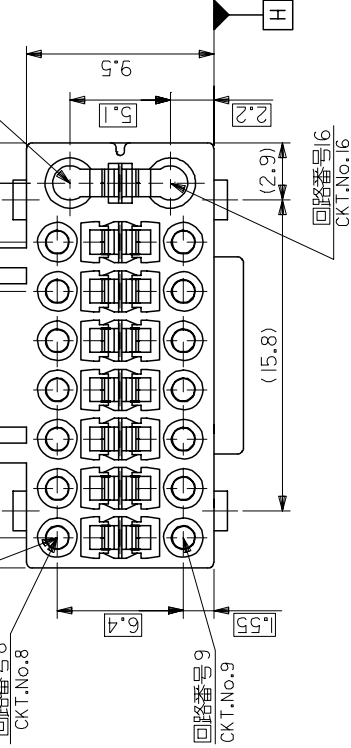


注記
NOTES

- 適合ターミナルが
ACCEPTABLE
- 嵌合相手：5352
MATES WITH:

回路番号 8
CKT.No.8

回路番号 1、グラント部
CKT.No.1, GROUND PART



REVISED EC NO: J2006-0424		DESCRIPTION		GENERAL TOLERANCES (UNLESS SPECIFIED)		DIMENSION STYLE MM ONLY		SCALE 4:1	
B	DRWN:HYAJI MA 2005/11/07	APPR:NUKITA 2005/11/14		10 UNDER	± 0.2	DRAWN BY K. HAYASHI	DATE '94/07/01	TITLE	
	CHK'D:N. UKITA 2005/11/07	REVISED		10 OVER	± 0.25	CHECKED BY M. OOYA M. SAK	DATE '94/09/01	SD-5	
	FC NO: J2006-0424	REVIS		30 OVER	± 0.3	APPROVED BY M. ENOMOTO	DATE '94/09/01	DOCUMENT	
		B		ANGULAR	± 3 °	MATERIAL NO.		SEE CHART	
				DRAFT WHERE APPLICABLE MUST REMAIN WITHIN DIMENSIONS		SIZE		THIS DRAWING CONTAINS INFORMATION INCORPORATED AND SHOULD	

Looking for pricing, stock, or lifecycle information?

Click below to explore more details on WIN SOURCE:

 [View 0511281601 on WIN SOURCE](#)

 [Molex, LLC Information](#)

Optimize Your Supply Chain with WIN SOURCE Solutions

-  Global Sourcing Solution
-  Obsolete Management
-  Cost Control Management
-  Shortage Management
-  Alternative Solution
-  Excess Inventory Management