

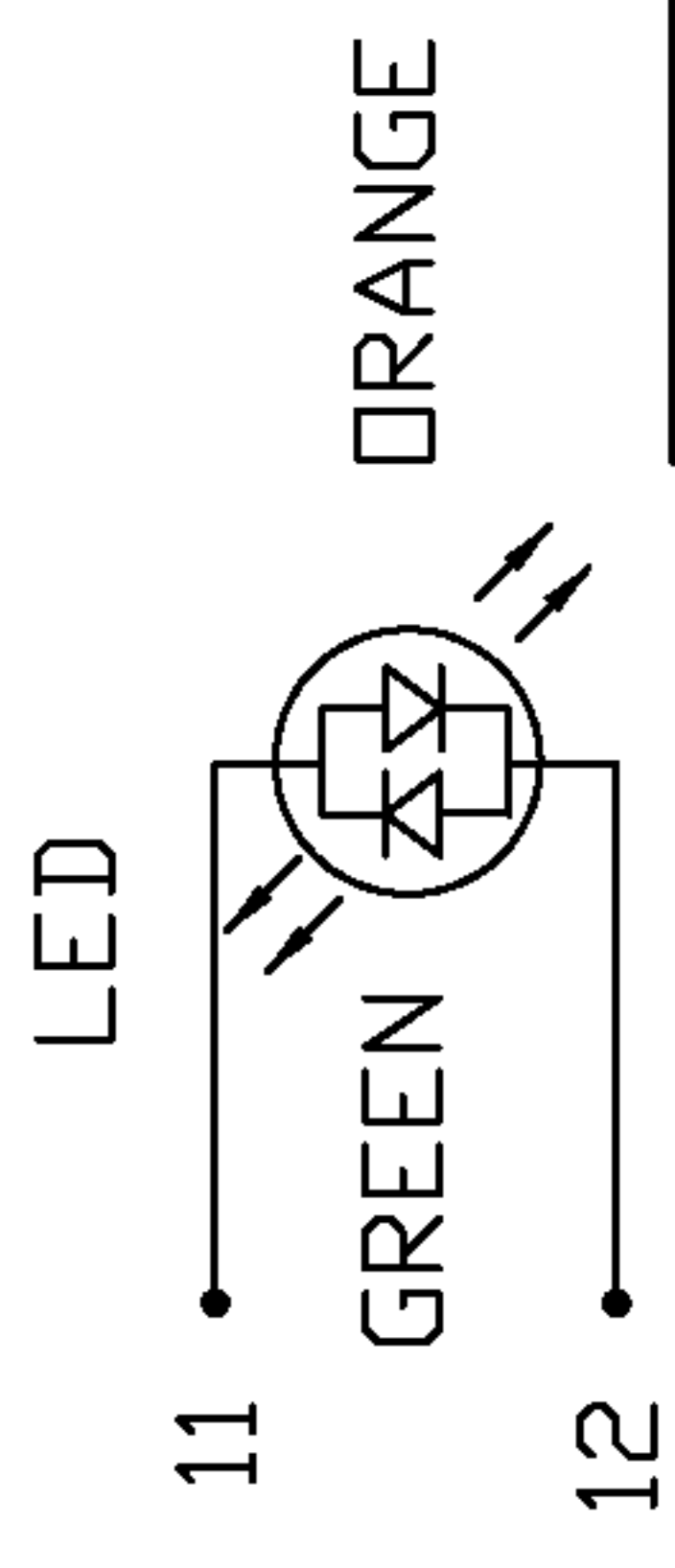


**THE DATASHEET OF**  
**0863-2X6R-54-F**



THE INFORMATION CONTAINED HEREIN IS CONSIDERED 'PROPRIETARY' TO BEL FUSE INC. AND SHALL NOT BE COPIED, REPRODUCED OR DISCLOSED WITHOUT THE WRITTEN APPROVAL OF BEL FUSE INC.

BI-COLOR LED POLARITY		
PIN	GREEN	ORANGE
11	-	+
12	+	-



ELECTRICAL CHARACTERISTICS @ 25°C

URNS RATIO

- TP1 1CT : 1CT ±2%
- TP2 1CT : 1CT ±2%
- TP3 1CT : 1CT ±2%
- TP4 1CT : 1CT ±2%

CL @ 100kHz/100mVRMS

8mA DC BIAS

INS. LOSS

0.1MHZ TO 1MHZ

1MHZ TO 65MHZ

65MHZ TO 100MHZ

100MHZ TO 125MHZ

RET. LOSS <MIN>

0.5MHZ-40MHZ

40MHZ-100MHZ

CM TO CM REJ

100kHz - 100MHZ

CM TO DM REJ

100kHz - 100MHZ

HIPOT <Isolation Voltage>:

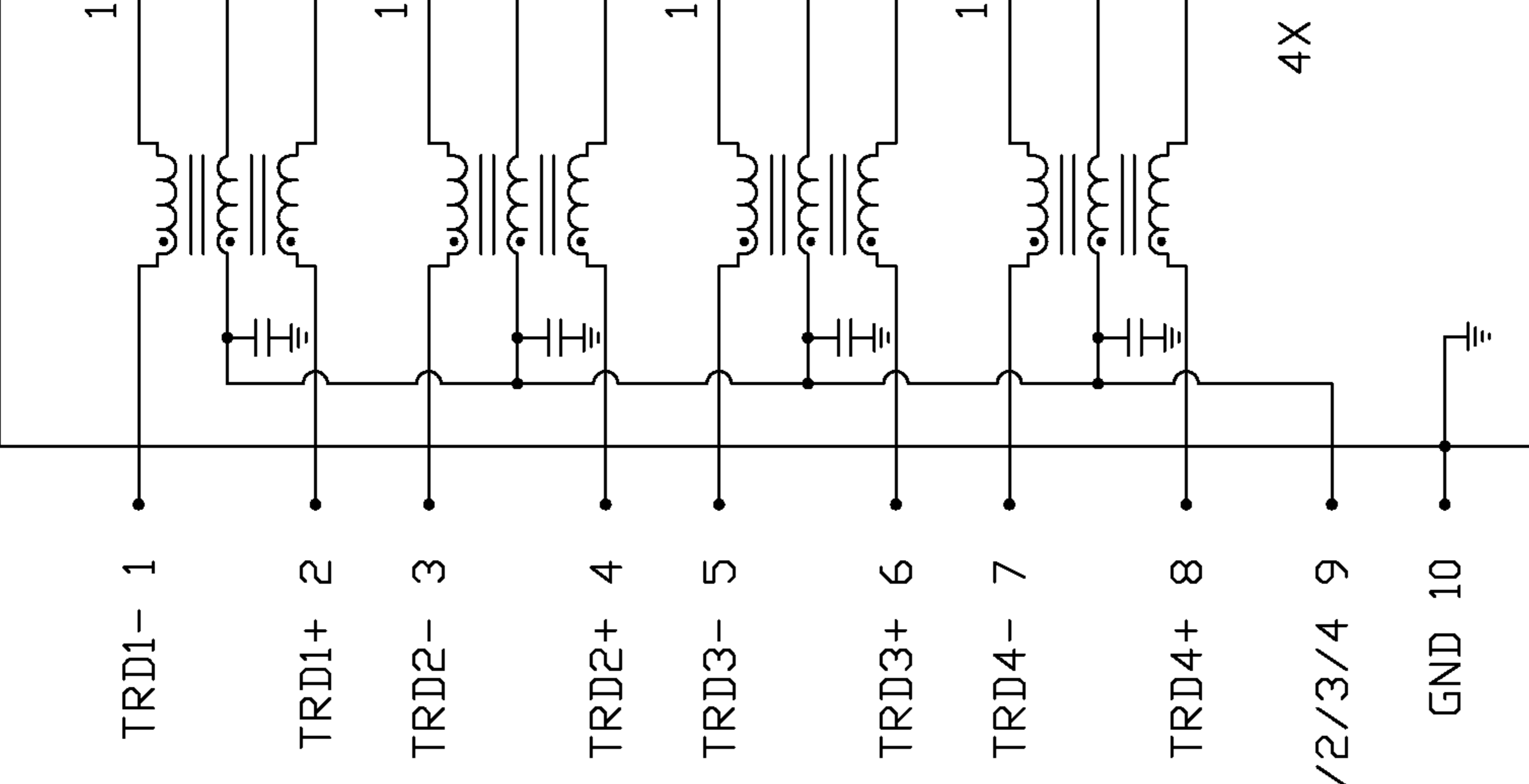
LED

V<sub>F</sub> <FORWARD VOLTAGE>

IF=20mA GREEN 2.2V TYP.  
ORANGE 2.0V TYP.

λ<sub>D</sub> <DOMINANT WAVELENGTH>

IF=20mA GREEN 565nm TYP.  
ORANGE 610nm TYP.



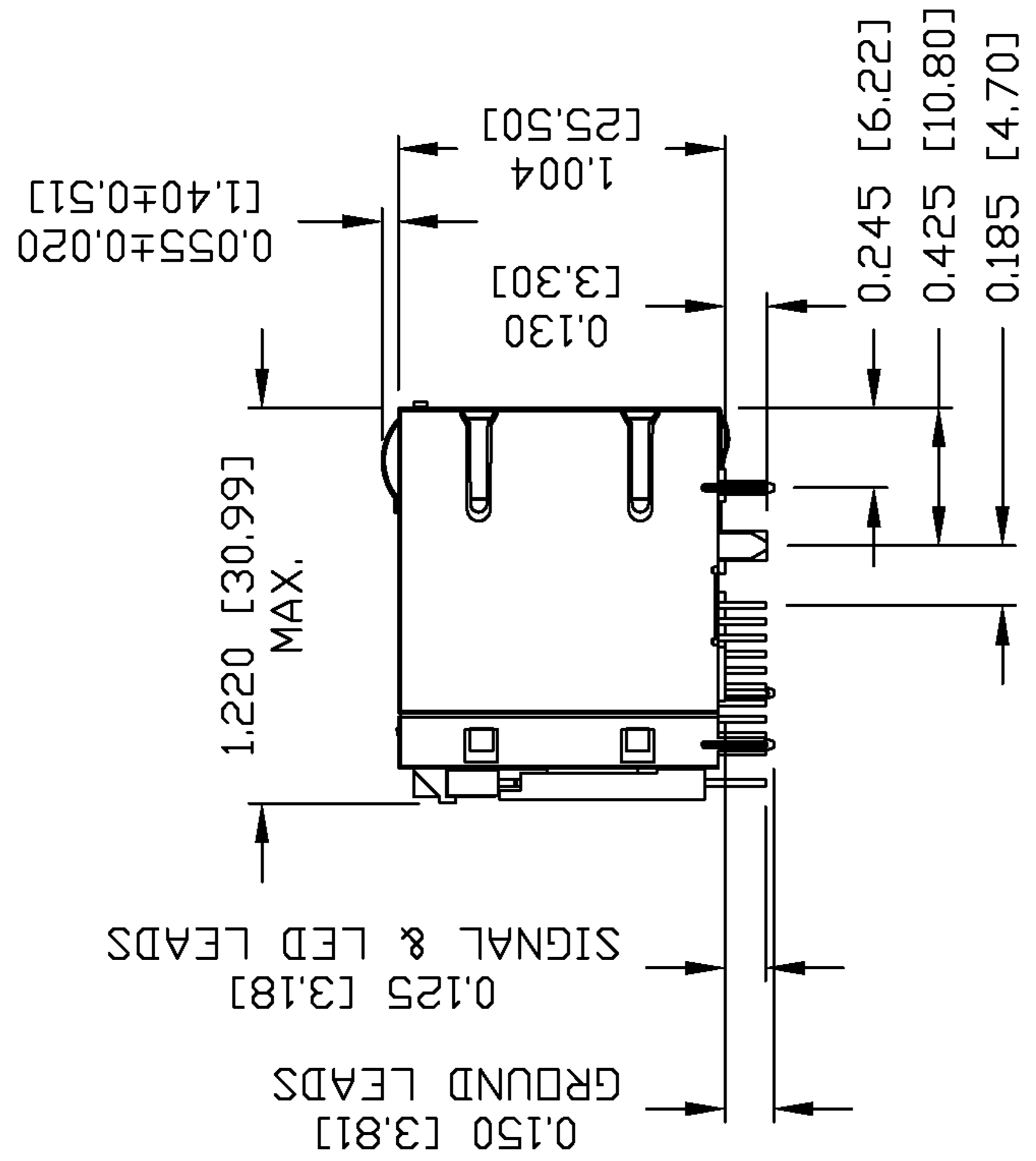
<b>ORIGINATED BY</b> CHUNG	<b>DATE</b> 02-28-06	<b>TITLE</b> 2X6 gigabit MagJack® <8 Cores, with LED> 0863-2X6R-54-F
<b>DRAWN BY</b> DE	<b>DATE</b> 02-28-06	

<b>PART NO. / DRAWING NO.</b> 08632X6R54-F	<b>STANDARD DI TOL. IN INCH</b> .X
<b>FILE NAME</b> 08632X6R54-FA.DWG	.XX
	.XXX

DC002(2)032305

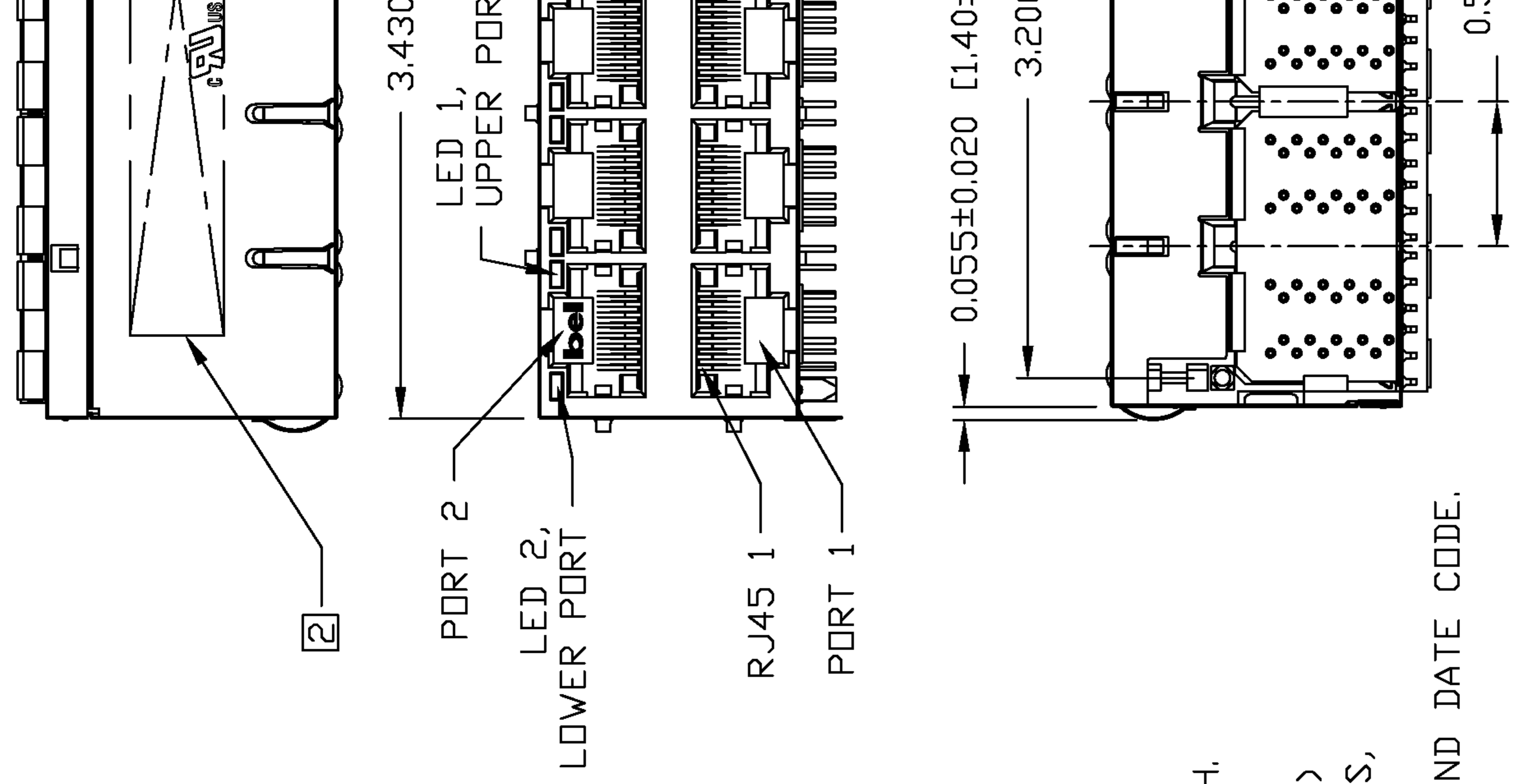
This document is electronically generated. This is a controlled copy if us

THE INFORMATION CONTAINED HEREIN IS CONSIDERED "PROPRIETARY" TO BEL FUSE INC. AND SHALL NOT BE COPIED, REPRODUCED OR DISCLOSED WITHOUT THE WRITTEN APPROVAL OF BEL FUSE INC.



**NOTES:**

- PLASTIC HOUSING: THERMOPLASTIC PBT  
 FLAMMABILITY RATING UL 94V-0
  - CONTACT PLATING: 50 MICRO-INCH HARD GOLD PLATING
  - OUTPUT PINS: TIN-COATED COPPER WIRE, DIA 0.018 INCH.
  - METAL SHIELD: NICKEL PLATED ON COPPER ALLOY.  
 <ALL GROUND LEADS ARE SOLDER DIPPED>
  - [1] JACK CAVITY CONFORMS TO FCC RULES AND REGULATIONS, PART 68 SUBPART F.
  - [2] MARK PART WITH MFG LOGO, MFG NAME, PART NUMBER, AND DATE CODE.
- Bel Fuse** UL RECOGNIZED - FILE #E196366 AND E169987.  
 3. ROHS COMPLIANCE, PER EU DIRECTIVE 2002/95/EC.

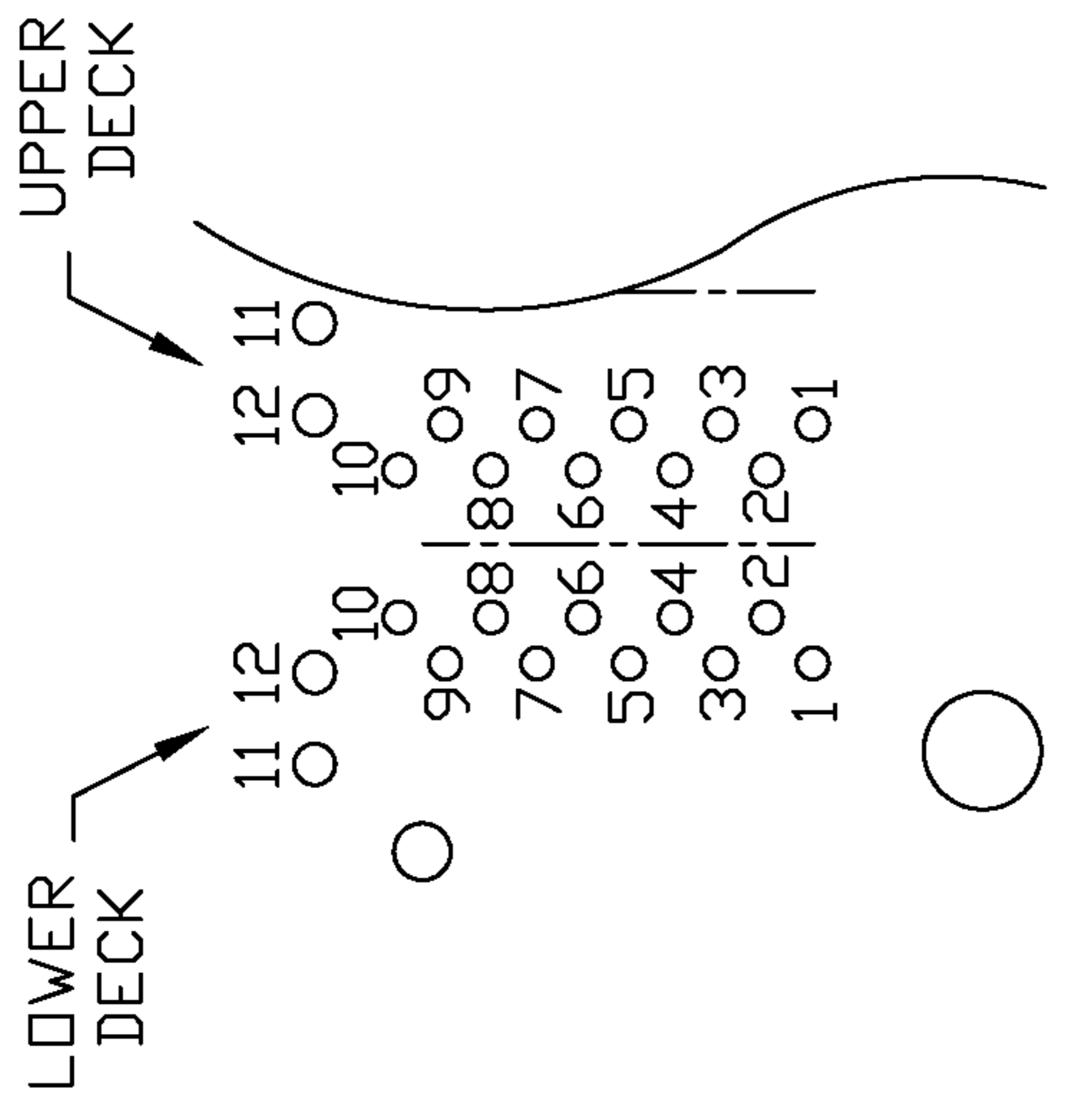
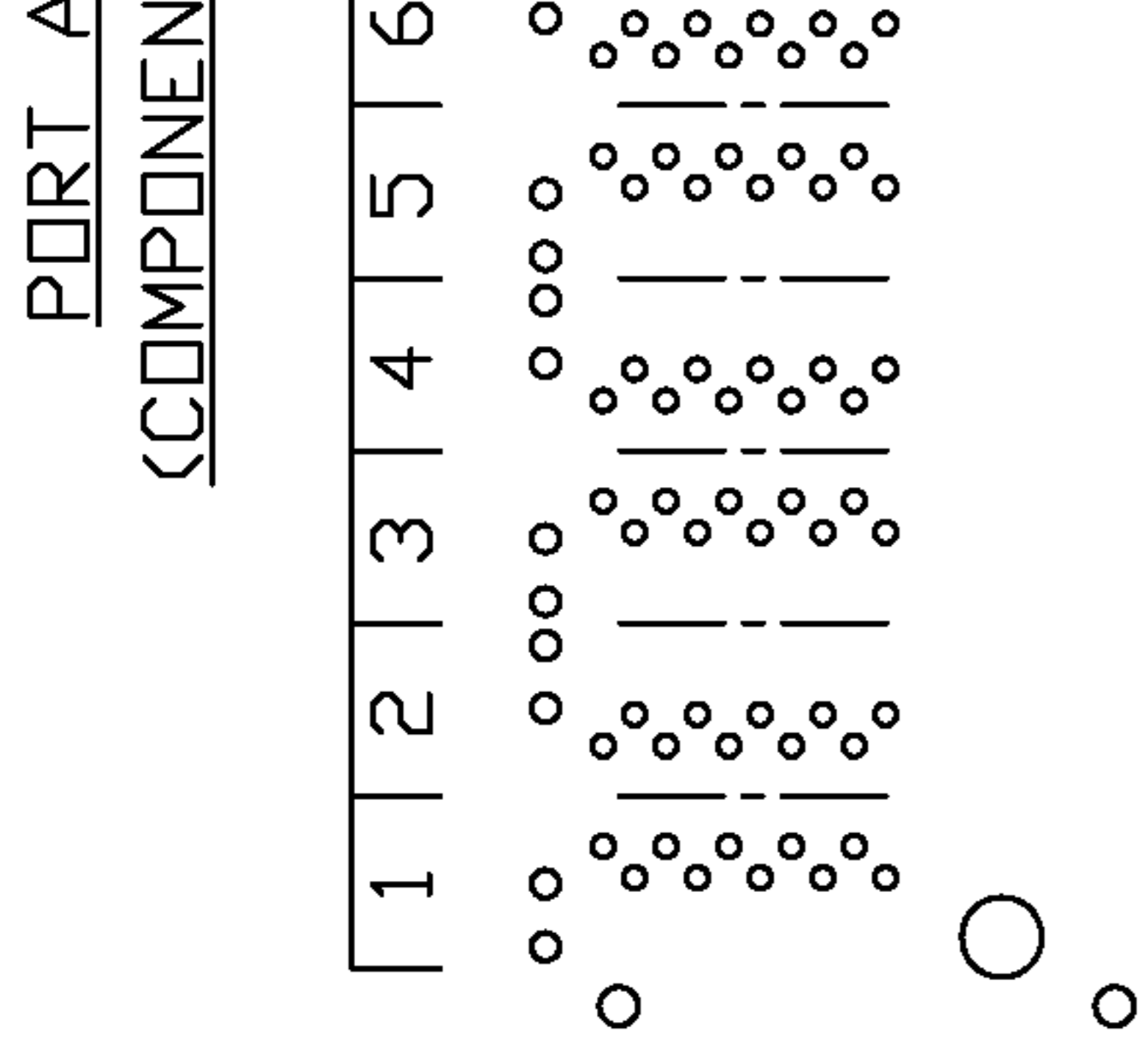


<b>ORIGINATED BY</b> QIN	<b>DATE</b> 02-28-06	<b>TITLE</b> 2X6 gigabit MagJack® (8 Cores, with LED) 0863-2X6R-54-F	<b>PART NO. / DRAWING NO.</b> 08632X6R54-F	<b>STANDARD DI TOL. IN INCI</b>
<b>DRAWN BY</b> TING	<b>DATE</b> 02-28-06		<b>FILE NAME</b> 08632X6R54-FA.DWG	.X .XX .XXX
				±0.0

DC002(2)032305

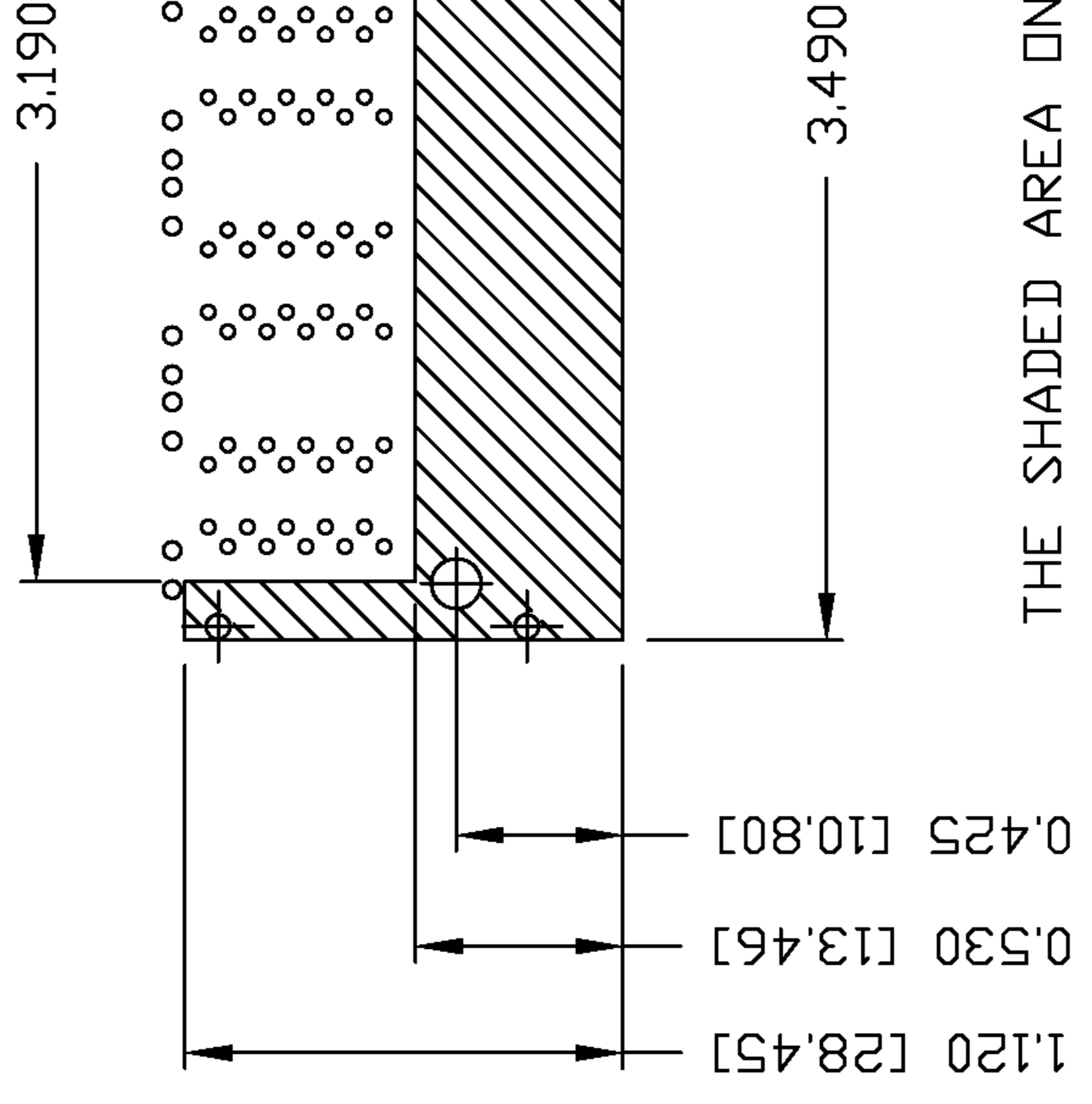
This document is electronically generated. This is a controlled copy if us

THE INFORMATION CONTAINED HEREIN IS CONSIDERED "PROPRIETARY" TO BEL FUSE INC. AND SHALL NOT BE COPIED, REPRODUCED OR DISCLOSED WITHOUT THE WRITTEN APPROVAL OF BEL FUSE INC.



PIN-OUT INFORMATION  
(COMPONENT SIDE VIEW)

12	GRN (+)/DRG (-)
11	GRN (-)/DRG (+)
10	GND
9	TRCT1/2/3/4
8	TRD 4+
7	TRD 4-
6	TRD 3+
5	TRD 3-
4	TRD 2+
3	TRD 2-
2	TRD 1+
1	TRD 1-

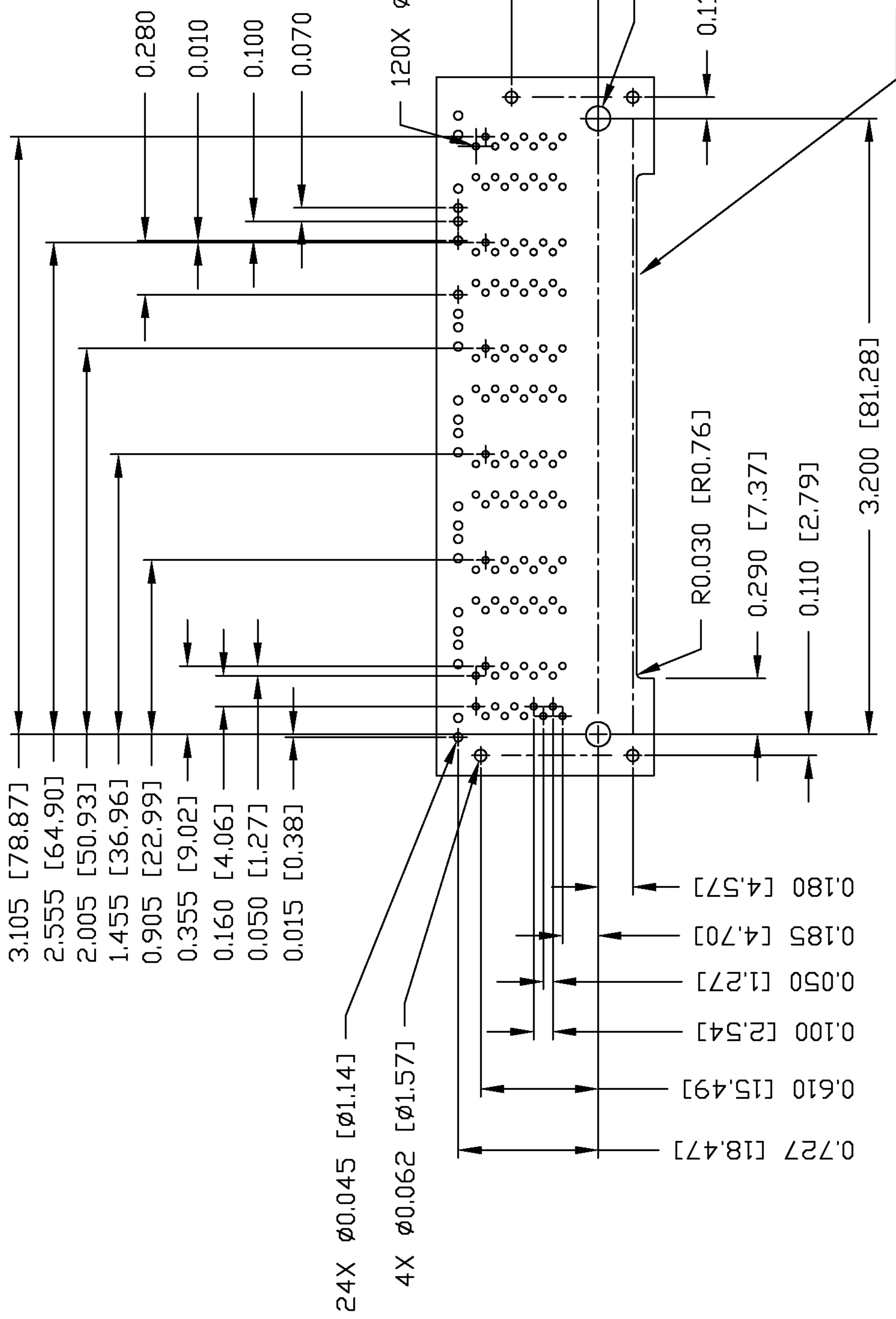


THE SHADED AREA ON RECOMMENDED TO BE COMPONENT PAD.

ORIGINATED BY QIN	DATE 02-28-06	PART NO. / DRAWING NO. 08632X6R54-F	STANDARD DI TOL. IN INCI
	DRAWN BY TING		DATE 02-28-06
TITLE 2X6 gigabit MagJack® (8 Cores, with LED) 0863-2X6R-54-F		This document is electronically generated. This is a controlled copy if us	

DC002(2)032305

THE INFORMATION CONTAINED HEREIN IS CONSIDERED "PROPRIETARY" TO BEL FUSE INC. AND SHALL NOT BE COPIED, REPRODUCED OR DISCLOSED WITHOUT THE WRITTEN APPROVAL OF BEL FUSE INC.



SUGGESTED FOOTPRINT  
<COMPONENT SIDE VIEW>

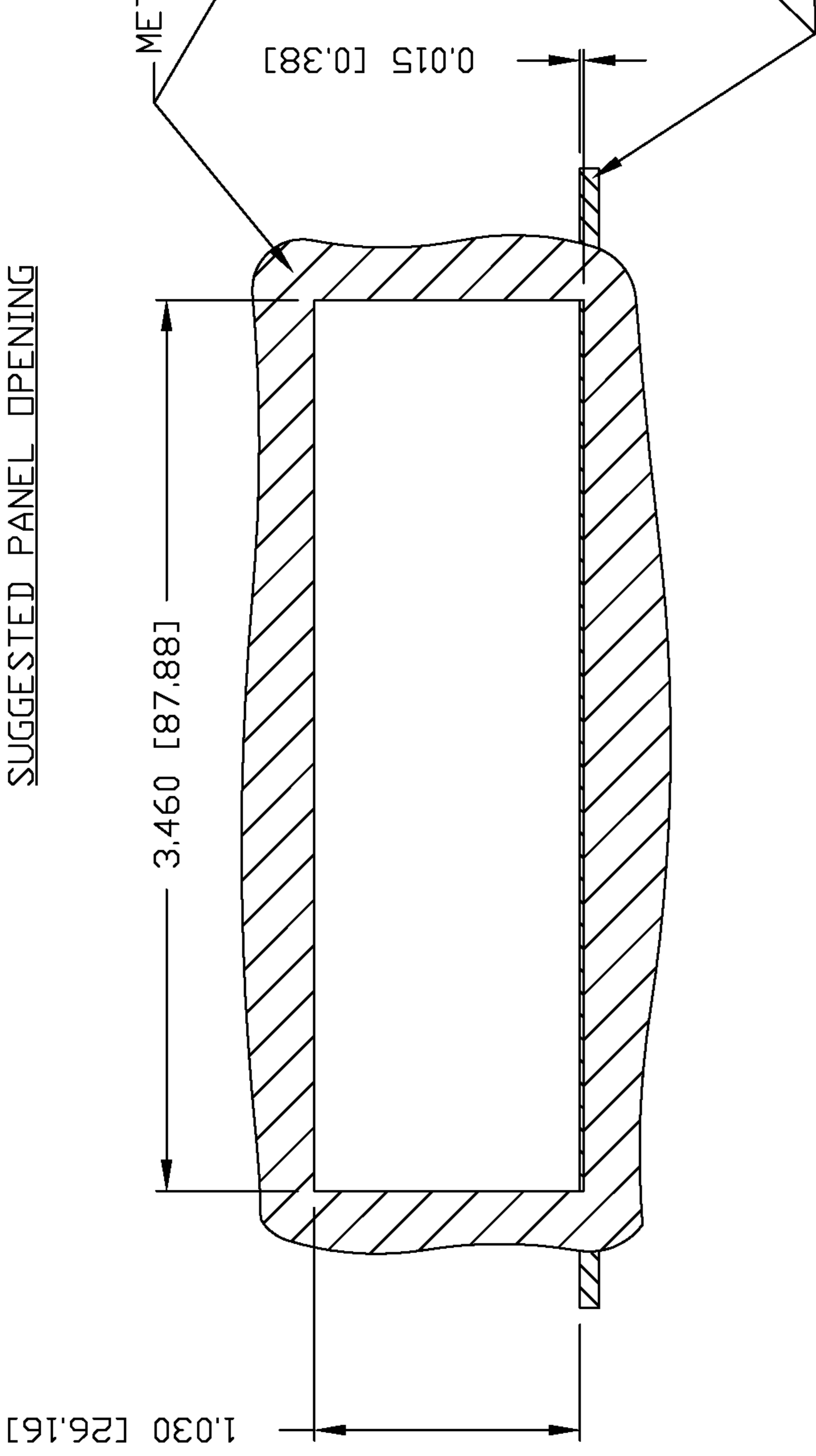
ORIGINATED BY QIN	DATE 02-28-06	TITLE 2X6 gigabit MagJack® (8 Cores, with LED) 0863-2X6R-54-F	PART NO. / DRAWING NO. 08632X6R54-F	STANDARD DI TOL. IN INCI
	DRAWN BY TING			DATE 02-28-06

DC002(2)032305

This document is electronically generated. This is a controlled copy if us

THE INFORMATION CONTAINED HEREIN IS CONSIDERED "PROPRIETARY" TO BEL FUSE INC. AND SHALL NOT BE COPIED, REPRODUCED OR DISCLOSED WITHOUT THE WRITTEN APPROVAL OF BEL FUSE INC.

SUGGESTED PANEL OPENING



NOTES:

THE DISTANCE OF PANEL INSIDE SURFACE RELATIVE TO FRONT SURFACE OF PART IS ONLY A IN CASE THIS DISTANCE IS DIFFERENT, THE REQUIRED PANEL OPENING DIMENSIONS CHANGE ACCORDINGLY

PACKING INFORMATION

PACKING TRAY : 0200-9999-A9 <TOP>

0200-9999-B6 <BOTTOM>

PACKING QUANTITY : 15 PCS FINISHED GOODS PER TRAY

7 TRAYS <105 PCS FINISHED GOODS> PER CARTON BOX

NOTE : CARDBOARDS ARE PLACED BETWEEN LAYERS OF PACKING TRAY INSIDE CARTON BOX <INCLUDE THE UPPERMOST AND LOWERMOST TRAY>

<b>ORIGINATED BY</b> QIN	<b>DATE</b> 02-28-06	<b>TITLE</b> 2X6 gigabit MagJack® <8 Cores, with LED> 0863-2X6R-54-F	<b>PART NO. / DRAWING NO.</b> 08632X6R54-F	<b>STANDARD DI</b> <b>TOL. IN INCI</b>
<b>DRAWN BY</b> TING	<b>DATE</b> 02-28-06		<b>FILE NAME</b> 08632X6R54-FA.DWG	.X .XX .XXX
				±0.0

DC002(2)032305

This document is electronically generated. This is a controlled copy if used.

Looking for pricing, stock, or lifecycle information?

Click below to explore more details on WIN SOURCE:

[View 0863-2X6R-54-F on WIN SOURCE](#)

[Bel Fuse Inc. Information](#)

**Optimize Your Supply Chain with WIN SOURCE Solutions**

- ✓ Global Sourcing Solution
- ✓ Obsolete Management
- ✓ Cost Control Management
- ✓ Shortage Management
- ✓ Alternative Solution
- ✓ Excess Inventory Management