



**THE DATASHEET OF
S70-138305045R**



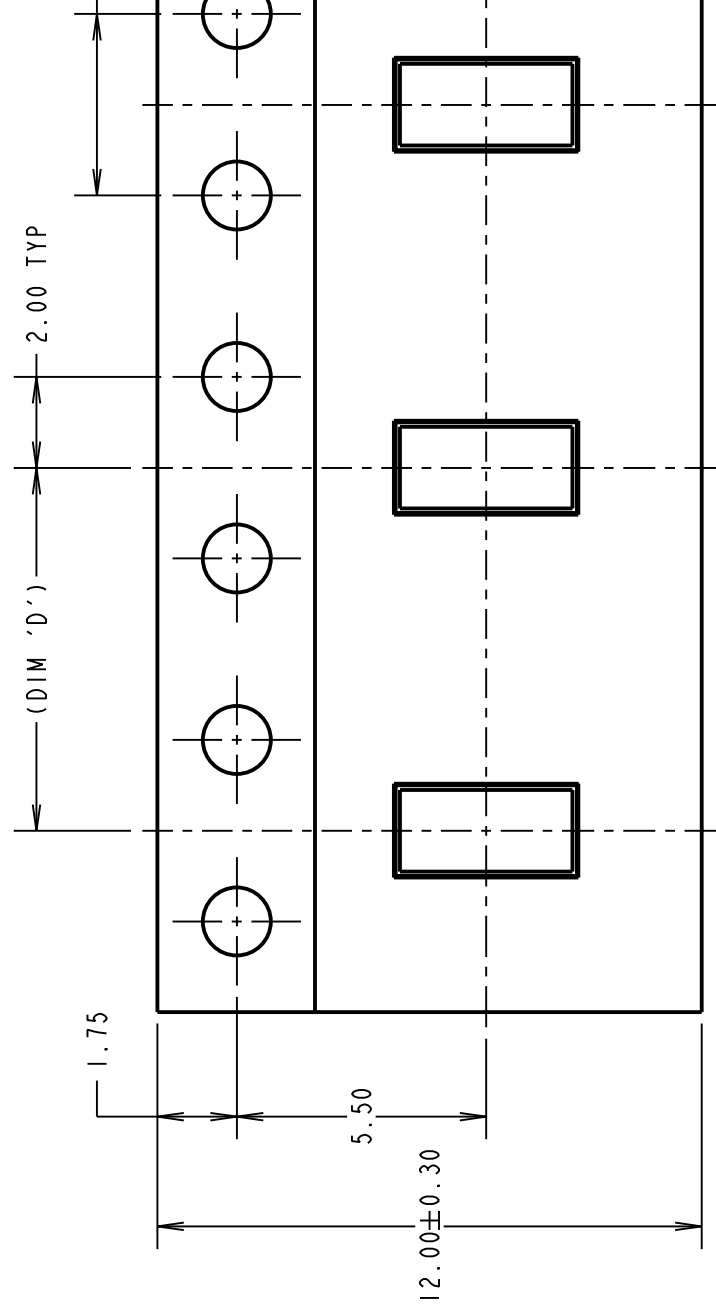
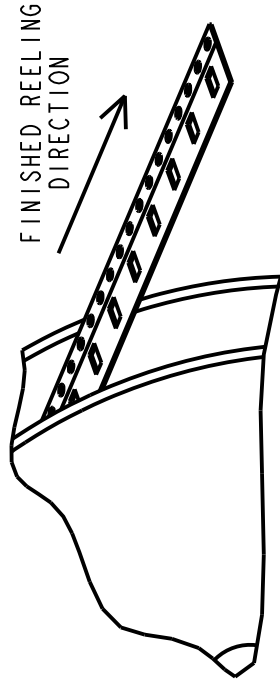
Customer Information Sheet

DRAWING No.: S70-1XXXXXX45R

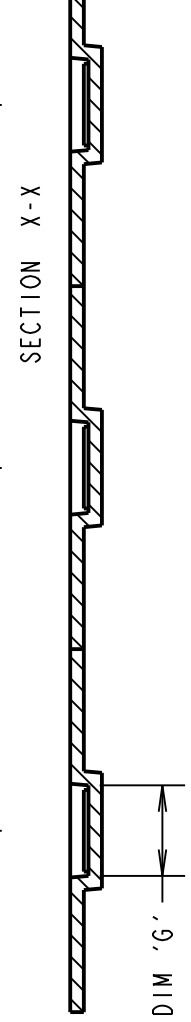
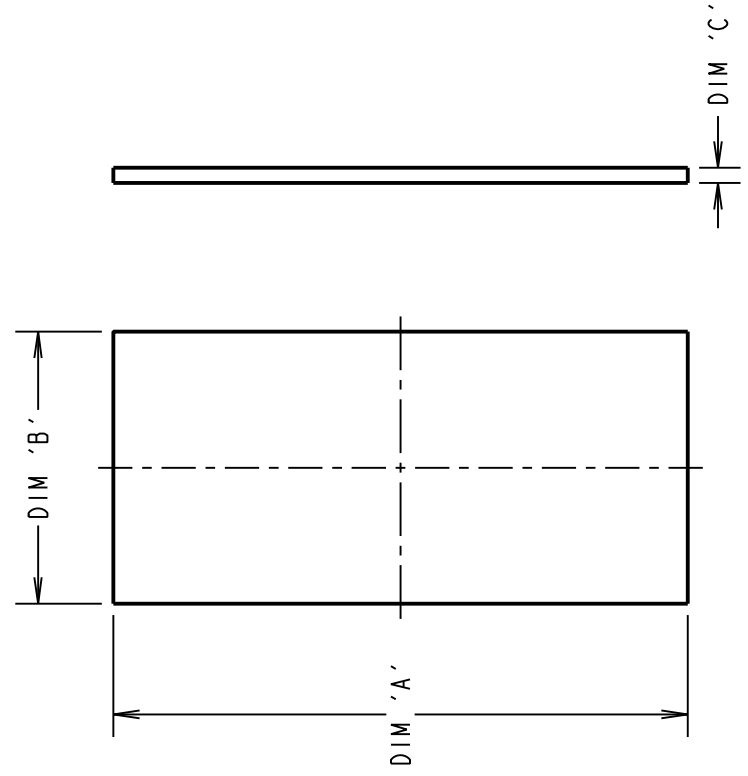
IF IN DOUBT - ASK

(C)

NOT TO SCALE

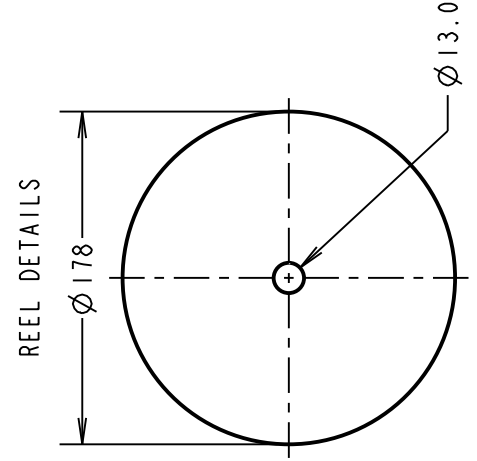
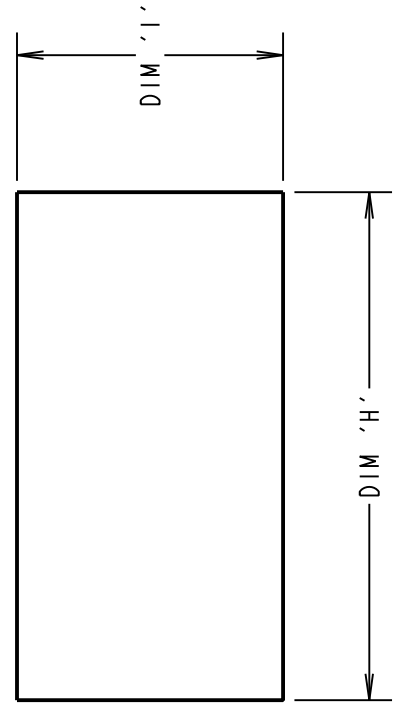


COMPONENT DETAILS



PART No.	DIM 'A'	DIM 'B'	DIM 'C'	DIM 'D'	DIM 'E'	DIM
S70-125161545R	2.50	1.60	0.15±0.05	4.00	2.70	0.50
S70-138181045R	3.80	1.80	0.10±0.05	8.00	4.00	0.40
S70-138305045R		3.00	0.50±0.05		4.10	0.80

RECOMMENDED PCB LAYOUT
ALL TOLERANCES ±0.05

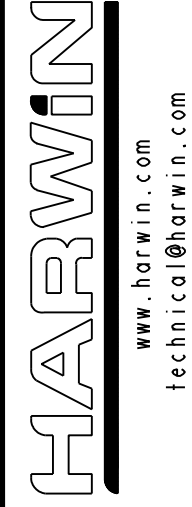


ORDER CODE: **S70-1XXXXXX45R**

SIZE:
DIM 'A' = LENGTH
DIM 'B' = WIDTH
DIM 'C' = THICKNESS

SPECIFICATIONS:
FINISH: 0.025µm - 0.075
ELECTRICAL:
CURRENT RATING:
CONTACT RESISTANCE:
ENVIRONMENTAL:
OPERATING TEMPERATURE:

NOTES:
1. PARTS TAPE AND REEL WITH EIA-481.



THIS DRAWING AND ANY INFORMATION OR DESCRIPTIVE MATTER SET OUT HEREON ARE CONFIDENTIAL AND COPYRIGHT PROPERTY OF THE HARWIN GROUP AND MUST NOT BE DISCLOSED, LOANED, COPIED OR USED FOR MANUFACTURING, TENDERING OR FOR ANY OTHER PURPOSE WITHOUT THEIR WRITTEN PERMISSION.

TOLERANCES	MATERIALS
X. = ±1mm	
X.X = ±0.50mm	
X.XX = ±0.20mm	
X.XXX = ±0.01mm	
ANGLES = ±5°	
UNLESS STATED	

FINI
S/AR





Looking for pricing, stock, or lifecycle information?

Click below to explore more details on WIN SOURCE:

 [View S70-138305045R on WIN SOURCE](#)

 [Harwin Inc. Information](#)

Optimize Your Supply Chain with WIN SOURCE Solutions

-  Global Sourcing Solution
-  Obsolete Management
-  Cost Control Management
-  Shortage Management
-  Alternative Solution
-  Excess Inventory Management