



**THE DATASHEET OF  
1930820000**



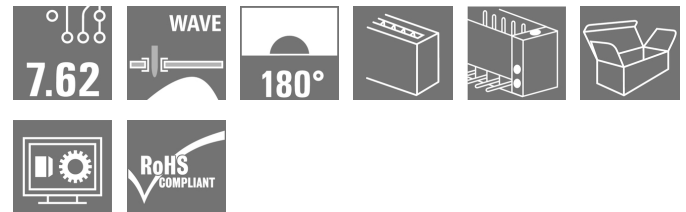
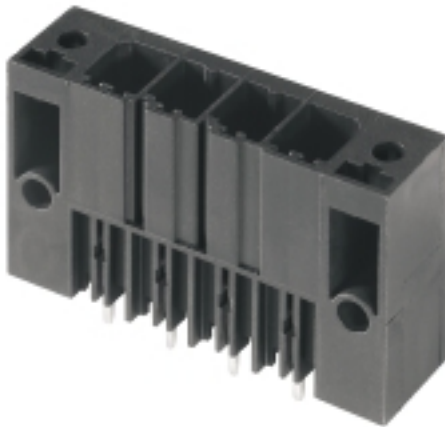
**SV 7.62HP/02/180SF 3.5SN BK BX**
**Weidmüller Interface GmbH & Co. KG**

Klingenbergstraße 26

D-32758 Detmold

Germany

www.weidmueller.com

**Product image**


Similar to illustration

Single-row, high-performance male header for side-by-side mounting without sacrificing any poles or with patented flange for fast fixing without tools. Maximum connection and operating reliability thanks to a mating profile that prevents incorrect connection, with unique coding diversity and additional fastening in the flange. 3.5 mm pin length is optimised for lead-free wave soldering.

**General ordering data**

|              |   |
|--------------|---|
| Version      | PCB plug-in connector, male header, Screw/clip-on flange, THT solder connection, 7.62 mm, Number of poles: 2, 180°, Solder pin length (l): 3.5 mm, tinned, black, Box |
| Order No.    | <a href="#">1930820000</a>  |
| Type         | SV 7.62HP/02/180SF 3.5SN BK BX  |
| GTIN (EAN)   | 4032248580798   |
| Qty.         | 60 pc(s).   |
| Product data | IEC: 1000 V / 57 A<br>UL: 300 V / 40.5 A  |
| Packaging    | Box   |

Creation date September 16, 2022 10:09:53 PM CEST

## SV 7.62HP/02/180SF 3.5SN BK BX

Weidmüller Interface GmbH &amp; Co. KG

Klingenbergstraße 26

D-32758 Detmold

Germany

www.weidmueller.com

## Technical data

## Dimensions and weights

|                          |          |                 |            |
|--------------------------|----------|-----------------|------------|
| Depth                    | 11.4 mm  | Depth (inches)  | 0.449 inch |
| Height                   | 31.8 mm  | Height (inches) | 1.252 inch |
| Height of lowest version | 28.3 mm  | Width           | 30.48 mm   |
| Width (inches)           | 1.2 inch | Net weight      | 8.36 g     |

## System specifications

|   |   |   |   |
|---|---|---|---|
| Product family                                    | OMNIMATE Power - series<br>BV/SV 7.62HP | Type of connection                              | Board connection                              |
| Mounting onto the PCB                             | THT solder connection                   | Pitch in mm (P)                                 | 7.62 mm                                       |
| Pitch in inches (P)                               | 0.3 inch                                | Outgoing elbow                                  | 180°  |
| Number of poles                                   | 2                                       | Number of solder pins per pole                  | 2   |
| Solder pin length (l)                             | 3.5 mm                                  | Solder pin length tolerance                     | +0.1 / -0.3 mm                                |
| Solder pin dimensions                             | 0.8 x 1.0 mm                            | Solder eyelet hole diameter (D)                 | 1.3 mm  |
| Solder eyelet hole diameter tolerance (D)+ 0,1 mm |   | L1 in mm  | 7.62 mm                                       |
| L1 in inches                                      | 0.3 inch                                | Number of rows                                  | 1   |
| Pin series quantity                               | 1                                       | Touch-safe protection acc. to DIN VDE<br>57 106 | Touch-safe above the<br>printed circuit board |
| Touch-safe protection acc. to DIN VDE<br>0470     | IP 20                                   | Protection degree                               | IP20, when fully mounted                      |
| Volume resistance                                 | 2.00 mΩ                                 | Can be coded                                    | Yes   |
| Tightening torque for screw flange, min.          | 0.2 Nm                                  | Tightening torque for screw flange, max.        | 0.3 Nm  |
| Plugging cycles                                   | 25                                      |   |   |

## Material data

|                                       |                                   |                                       |                                   |
|---------------------------------------|-----------------------------------|---------------------------------------|-----------------------------------|
| Insulating material                   | PA GF                             | Colour                                | black                             |
| Colour chart (similar)                | RAL 9011                          | Insulating material group             | II                                |
| Comparative Tracking Index (CTI)      | ≥ 500                             | UL 94 flammability rating             | V-0                               |
| Contact material                      | Copper alloy                      | Contact surface                       | tinned                            |
| Layer structure of solder connection  | 1...3 μm Ni / 4...6 μm Sn<br>matt | Layer structure of plug contact       | 1...3 μm Ni / 4...6 μm Sn<br>matt |
| Storage temperature, min.             | -40 °C                            | Storage temperature, max.             | 70 °C                             |
| Operating temperature, min.           | -50 °C                            | Operating temperature, max.           | 130 °C                            |
| Temperature range, installation, min. | -25 °C                            | Temperature range, installation, max. | 130 °C                            |

## Rated data acc. to IEC

|  |                        |  |                   |
|--|------------------------|--|-------------------|
| tested acc. to standard  | IEC 60664-1, IEC 61984 | Rated current, min. number of poles<br>(Tu=20°C)                         | 57 A              |
| Rated current, max. number of poles<br>(Tu=20°C)                             | 41 A                   | Rated current, min. number of poles<br>(Tu=40°C)                         | 41 A              |
| Rated current, max. number of poles<br>(Tu=40°C)                             | 41 A                   | Rated voltage for surge voltage class /<br>pollution degree II/2         | 1,000 V           |
| Rated voltage for surge voltage class /<br>pollution degree III/2            | 630 V                  | Rated voltage for surge voltage class /<br>pollution degree III/3        | 630 V             |
| Rated impulse voltage for surge voltage<br>class/ pollution degree II/2      | 6 kV                   | Rated impulse voltage for surge voltage<br>class/ pollution degree III/2 | 6 kV              |
| Rated impulse voltage for surge voltage<br>class/ contamination degree III/3 | 6 kV                   | Short-time withstand current resistance                                  | 3 x 1s with 420 A |
| Clearance, min.  | 6.9 mm                 | Creepage distance, min.  | 9.6 mm            |

## SV 7.62HP/02/180SF 3.5SN BK BX

Weidmüller Interface GmbH &amp; Co. KG

Klingenbergstraße 26

D-32758 Detmold

Germany

www.weidmueller.com

## Technical data

## Rated data acc. to CSA

Institute (CSA)



Certificate No. (CSA)

200039-1121690

|                                   |       |
|-----------------------------------|-------|
| Rated voltage (Use group B / CSA) | 300 V |
| Rated voltage (Use group D / CSA) | 600 V |
| Rated current (Use group C / CSA) | 35 A  |

|                                   |       |
|-----------------------------------|-------|
| Rated voltage (Use group C / CSA) | 300 V |
| Rated current (Use group B / CSA) | 35 A  |
| Rated current (Use group D / CSA) | 5 A   |

Reference to approval values

Specifications are maximum values, details - see approval certificate.

## Rated data acc. to UL 1059

Institute (cURus)



Certificate No. (cURus)

E60693

|                                       |        |
|---------------------------------------|--------|
| Rated voltage (Use group B / UL 1059) | 300 V  |
| Rated voltage (Use group D / UL 1059) | 600 V  |
| Rated current (Use group C / UL 1059) | 40.5 A |
| Clearance distance, min.              | 6.9 mm |

|                                       |        |
|---------------------------------------|--------|
| Rated voltage (Use group C / UL 1059) | 300 V  |
| Rated current (Use group B / UL 1059) | 40.5 A |
| Rated current (Use group D / UL 1059) | 5 A    |
| Creepage distance, min.               | 9.6 mm |

Reference to approval values

Specifications are maximum values, details - see approval certificate.

## Packing

|           |        |            |        |
|-----------|--------|------------|--------|
| Packaging | Box    | VPE length | 338 mm |
| VPE width | 130 mm | VPE height | 33 mm  |

## Classifications

|             |             |             |             |
|-------------|-------------|-------------|-------------|
| ETIM 6.0    | EC002637    | ETIM 7.0    | EC002637    |
| ETIM 8.0    | EC002637    | ECLASS 9.0  | 27-44-04-02 |
| ECLASS 9.1  | 27-44-04-02 | ECLASS 10.0 | 27-44-04-02 |
| ECLASS 11.0 | 27-46-02-01 | ECLASS 12.0 | 27-46-02-01 |

## Important note

IPC conformity

Conformity: The products are developed, manufactured and delivered according international recognized standards and norms and comply with the assured properties in the data sheet resp. fulfill decorative properties in accordance with IPC-A-610 "Class 2". Further claims on the products can be evaluated on request.

Notes

- Additional variants on request
- Rated current related to rated cross-section & min. No. of poles.
- P on drawing = pitch
- Rated data refer only to the component itself. Clearance and creepage distances to other components are to be designed in accordance with the relevant application standards.
- Diameter of solder eyelet D = 1.4+0.1 mm starting with 8-pole
- Long term storage of the product with average temperature of 50 °C and average humidity 70%, 36 months

Creation date September 16, 2022 10:09:53 PM CEST

Catalogue status 09.09.2022 / We reserve the right to make technical changes.

3

## SV 7.62HP/02/180SF 3.5SN BK BX

Weidmüller Interface GmbH &amp; Co. KG

Klingenbergstraße 26

D-32758 Detmold

Germany

www.weidmueller.com

## Technical data

## Approvals

Approvals



ROHS Conform

UL File Number Search UL Website

Certificate No. (cURus) E60693

## Downloads

|   |  |
|---|--|
| Approval/Certificate/Document of Conformity | <a href="#">Declaration of the Manufacturer</a>  |
| Engineering Data                            | <a href="#">CAD data – STEP</a>  |
| Engineering Data                            | <a href="#">EPLAN, WSCAD</a>   |
| Product Change Notification                 | <a href="#">PCN_2016_278_PL33_Aenderung_Flanschkontur_SV762_DE</a><br><a href="#">PCN_2016_278_PL33_change_flange_contour_SV762_EN</a>   |
| Catalogues                                  | <a href="#">Catalogues in PDF-format</a>   |
| Brochures                                   | <a href="#">FL DRIVES EN</a><br><a href="#">MB DEVICE MANUF. EN</a><br><a href="#">FL DRIVES DE</a><br><a href="#">FL HEATING ELECTR EN</a><br><a href="#">FL APPL INVERTER EN</a><br><a href="#">FL_BASE_STATION_EN</a><br><a href="#">FL ELEVATOR EN</a><br><a href="#">FL POWER SUPPLY EN</a><br><a href="#">FL 72H SAMPLE SER EN</a><br><a href="#">PO OMNIMATE EN</a><br><a href="#">PO OMNIMATE EN</a> |

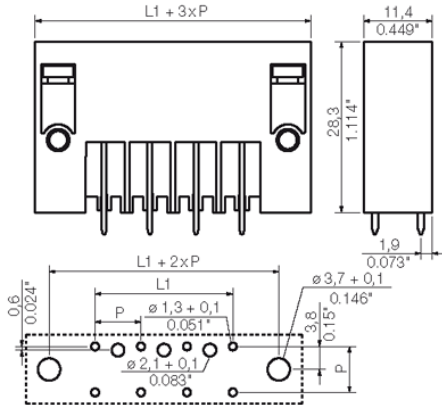
**SV 7.62HP/02/180SF 3.5SN BK BX**

**Weidmüller Interface GmbH & Co. KG**  
 Klingenbergstraße 26  
 D-32758 Detmold  
 Germany

www.weidmueller.com

**Drawings**

**Dimensional drawing**



## Recommended wave soldering profiles

**Weidmüller Interface GmbH & Co. KG**  
 Klängenbergstraße 16  
 D-32758 Detmold  
 Germany  
 Fon: +49 5231 14-0  
 Fax: +49 5231 14-292083  
 www.weidmueller.com

### Single Wave:



### Double Wave:



### Wave soldering profiles

Wired connection elements should be processed in accordance with the DIN EN 61760-1 standard. We have included two recommendations for practical wave soldering profiles, with which Weidmüller PCB terminals and connectors are qualified.

When choosing a suitable profile for your application, the following factors also need to be considered:

- PCB thickness
- Proportion of Cu in the layers
- Single/double-sided assembly
- Product range
- Heating and cooling rates

The single and double wave profiles each indicate the recommended operating range, including the maximum soldering temperature of 260°C. In practice, the maximum soldering temperature is quite often well below the above maximum profile.

# Mouser Electronics

Authorized Distributor



Click to View Pricing, Inventory, Delivery & Lifecycle Information:

[Weidmuller:](#)

[1930820000](#)

## Looking for pricing, stock, or lifecycle information?

Click below to explore more details on WIN SOURCE:

-  [View 1930820000 on WIN SOURCE](#)
-  [Weidmuller Information](#)

## Optimize Your Supply Chain with WIN SOURCE Solutions

-  Global Sourcing Solution
-  Obsolete Management
-  Cost Control Management
-  Shortage Management
-  Alternative Solution
-  Excess Inventory Management