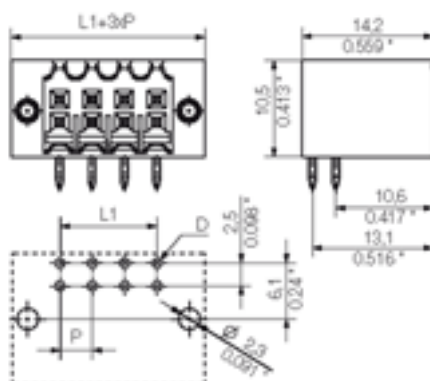




**THE DATASHEET OF
1728470000**





General ordering data

| | |
|------------------|--|
| Order No. | 1728470000 |
| Part designation | S2L 3.5/6/90F 3.5SN OR |
| Version | PCB plug-in connector, Male connectors, Soldered connection, Pitch: 3.50 mm, No. of poles: 6, 90°, Box |
| EAN | 4032248039968 |
| Qty. | 50 pc(s). |

System parameters

| | |
|---|------------------------------|
| Fitted to PCB | Soldered connection |
| Outgoing elbow | 90° |
| Pitch | 3.5 mm |
| Pitch in inch | 0.138 inch |
| No. of poles | 6 |
| Solder pin length | 3.5 mm |
| Can be coded | Yes |
| No. of rows | 2 |
| No. of solder pins per pole | 1 |
| Dia. of fitting hole | 1.3 mm |
| Fitting hole tolerance | + 0.1 mm |
| L1 in mm | 7 mm |
| L1 in inch | 0.276 inch |
| Electric shock protection to DIN VDE 0470 | IP 10 |
| Electric shock protection to DIN VDE 0470 | Safe from back-of-hand touch |

Material data

| | |
|---------------------------|---------------------|
| Insulating material | PBT |
| Colour | orange |
| colour chart | Similar to RAL 2000 |
| Insulating material group | IIIa |
| Flammability class UL 94 | V-0 |
| CTI | >= 200 |
| Contact base material | Copper alloy |
| Contact surface | tinned |

Material data

| | |
|---------------------------------------|--------|
| Constant operating temp., min. | -25 °C |
| Constant operating temp., max. | 100 |
| Storage temperature, min. | -25 °C |
| Storage temperature, max. | 55 °C |
| Max. relative humidity during storage | 93 % |

DIN IEC rating data

| | |
|--|------------------|
| Rated current, min. No. pins (Tu=20°C) | 10 A |
| Rated current, max. No. pins (Tu=20°C) | 10 A |
| Rated current, min. No. pins (Tu=40°C) | 9 A |
| Rated current, max. No. pins (Tu=40°C) | 8.5 A |
| Rated voltage for overvoltage class/pollution severity III/3 | 80 V |
| Rated impulse withstand voltage for overvoltage class/pollution severity III/3 | 2.5 kV |
| Rated voltage for overvoltage class/pollution severity III/2 | 125 V |
| Rated impulse withstand voltage for overvoltage class/pollution severity III/2 | 2.5 kV |
| Rated voltage for overvoltage class/pollution severity II/2 | 250 V |
| Rated impulse withstand voltage for overvoltage class/pollution severity II/2 | 2.5 kV |
| Short-time withstand current resistance | 3 x 1s with 77 A |

CSA rating data

| | |
|-----------------------------|------|
| Rated voltage (Use group D) | 50 V |
| Rated current (Use group D) | 5 A |

UL 1059 rating data

| | |
|-----------------------------|-------|
| Rated voltage (Use group D) | 150 V |
| Rated current (Use group D) | 7 A |

Approvals

Approvals institutes



Downloads

| | |
|---------------------------------------|-------------|
| CAD Library (P-CAD Format - Standard) | S2L-SMT.LIB |
|---------------------------------------|-------------|

Classifications

| | |
|------------|-------------|
| ETIM 2.0 | NK |
| ETIM 3.0 | EC001284 |
| eClass 4.1 | 27-26-07-01 |
| eClass 5.0 | 27-26-07-01 |
| eClass 5.1 | 27-26-07-01 |



Similar products

| Order No. | Part designation | Version |
|------------|-------------------------|---|
| 1728630000 | S2L 3.5/6/90F 3.5SN SW | PCB plug-in connector, Male connectors, Soldered connection, Pitch: 3.50 mm, No. of poles: 6, 90°, Box |
| 1756000000 | S2L 3.5/6/90F 3.5AU OR | PCB plug-in connector, Male connectors, Soldered connection, Pitch: 3.50 mm, No. of poles: 6, 90°, Box |
| 1756160000 | S2L 3.5/6/90F 3.5AU SW | PCB plug-in connector, Male connectors, Soldered connection, Pitch: 3.50 mm, No. of poles: 6, 90°, Box |
| 1728480000 | S2L 3.5/8/90F 3.5SN OR | PCB plug-in connector, Male connectors, Soldered connection, Pitch: 3.50 mm, No. of poles: 8, 90°, Box |
| 1728640000 | S2L 3.5/8/90F 3.5SN SW | PCB plug-in connector, Male connectors, Soldered connection, Pitch: 3.50 mm, No. of poles: 8, 90°, Box |
| 1756010000 | S2L 3.5/8/90F 3.5AU OR | PCB plug-in connector, Male connectors, Soldered connection, Pitch: 3.50 mm, No. of poles: 8, 90°, Box |
| 1728490000 | S2L 3.5/10/90F 3.5SN OR | PCB plug-in connector, Male connectors, Soldered connection, Pitch: 3.50 mm, No. of poles: 10, 90°, Box |
| 1728650000 | S2L 3.5/10/90F 3.5SN SW | PCB plug-in connector, Male connectors, Soldered connection, Pitch: 3.50 mm, No. of poles: 10, 90°, Box |
| 1756020000 | S2L 3.5/10/90F 3.5AU OR | PCB plug-in connector, Male connectors, Soldered connection, Pitch: 3.50 mm, No. of poles: 10, 90°, Box |
| 1756180000 | S2L 3.5/10/90F 3.5AU SW | PCB plug-in connector, Male connectors, Soldered connection, Pitch: 3.50 mm, No. of poles: 10, 90°, Box |
| 1728500000 | S2L 3.5/12/90F 3.5SN OR | PCB plug-in connector, Male connectors, Soldered connection, Pitch: 3.50 mm, No. of poles: 12, 90°, Box |
| 1728660000 | S2L 3.5/12/90F 3.5SN SW | PCB plug-in connector, Male connectors, Soldered connection, Pitch: 3.50 mm, No. of poles: 12, 90°, Box |
| 1756190000 | S2L 3.5/12/90F 3.5AU SW | PCB plug-in connector, Male connectors, Soldered connection, Pitch: 3.50 mm, No. of poles: 12, 90°, Box |
| 1728510000 | S2L 3.5/14/90F 3.5SN OR | PCB plug-in connector, Male connectors, Soldered connection, Pitch: 3.50 mm, No. of poles: 14, 90°, Box |
| 1728670000 | S2L 3.5/14/90F 3.5SN SW | PCB plug-in connector, Male connectors, Soldered connection, Pitch: 3.50 mm, No. of poles: 14, 90°, Box |
| 1728520000 | S2L 3.5/16/90F 3.5SN OR | PCB plug-in connector, Male connectors, Soldered connection, Pitch: 3.50 mm, No. of poles: 16, 90°, Box |
| 1728680000 | S2L 3.5/16/90F 3.5SN SW | PCB plug-in connector, Male connectors, Soldered connection, Pitch: 3.50 mm, No. of poles: 16, 90°, Box |
| 1756050000 | S2L 3.5/16/90F 3.5AU OR | PCB plug-in connector, Male connectors, Soldered connection, Pitch: 3.50 mm, No. of poles: 16, 90°, Box |
| 1756210000 | S2L 3.5/16/90F 3.5AU SW | PCB plug-in connector, Male connectors, Soldered connection, Pitch: 3.50 mm, No. of poles: 16, 90°, Box |
| 1728530000 | S2L 3.5/18/90F 3.5SN OR | PCB plug-in connector, Male connectors, Soldered connection, Pitch: 3.50 mm, No. of poles: 18, 90°, Box |
| 1728690000 | S2L 3.5/18/90F 3.5SN SW | PCB plug-in connector, Male connectors, Soldered connection, Pitch: 3.50 mm, No. of poles: 18, 90°, Box |
| 1756060000 | S2L 3.5/18/90F 3.5AU OR | PCB plug-in connector, Male connectors, Soldered connection, Pitch: 3.50 mm, No. of poles: 18, 90°, Box |
| 1728540000 | S2L 3.5/20/90F 3.5SN OR | PCB plug-in connector, Male connectors, Soldered connection, Pitch: 3.50 mm, No. of poles: 20, 90°, Box |
| 1728700000 | S2L 3.5/20/90F 3.5SN SW | PCB plug-in connector, Male connectors, Soldered connection, Pitch: 3.50 mm, No. of poles: 20, 90°, Box |

| | | |
|------------|-------------------------|---|
| 1756070000 | S2L 3.5/20/90F 3.5AU OR | PCB plug-in connector, Male connectors, Soldered connection, Pitch: 3.50 mm, No. of poles: 20, 90°, Box |
| 1756230000 | S2L 3.5/20/90F 3.5AU SW | PCB plug-in connector, Male connectors, Soldered connection, Pitch: 3.50 mm, No. of poles: 20, 90°, Box |
| 1728550000 | S2L 3.5/22/90F 3.5SN OR | PCB plug-in connector, Male connectors, Soldered connection, Pitch: 3.50 mm, No. of poles: 22, 90°, Box |
| 1756240000 | S2L 3.5/22/90F 3.5AU SW | PCB plug-in connector, Male connectors, Soldered connection, Pitch: 3.50 mm, No. of poles: 22, 90°, Box |
| 1728560000 | S2L 3.5/24/90F 3.5SN OR | PCB plug-in connector, Male connectors, Soldered connection, Pitch: 3.50 mm, No. of poles: 24, 90°, Box |
| 1728720000 | S2L 3.5/24/90F 3.5SN SW | PCB plug-in connector, Male connectors, Soldered connection, Pitch: 3.50 mm, No. of poles: 24, 90°, Box |
| 1756090000 | S2L 3.5/24/90F 3.5AU OR | PCB plug-in connector, Male connectors, Soldered connection, Pitch: 3.50 mm, No. of poles: 24, 90°, Box |
| 1756250000 | S2L 3.5/24/90F 3.5AU SW | PCB plug-in connector, Male connectors, Soldered connection, Pitch: 3.50 mm, No. of poles: 24, 90°, Box |
| 1728570000 | S2L 3.5/26/90F 3.5SN OR | PCB plug-in connector, Male connectors, Soldered connection, Pitch: 3.50 mm, No. of poles: 26, 90°, Box |
| 1756100000 | S2L 3.5/26/90F 3.5AU OR | PCB plug-in connector, Male connectors, Soldered connection, Pitch: 3.50 mm, No. of poles: 26, 90°, Box |
| 1756260000 | S2L 3.5/26/90F 3.5AU SW | PCB plug-in connector, Male connectors, Soldered connection, Pitch: 3.50 mm, No. of poles: 26, 90°, Box |
| 1728580000 | S2L 3.5/28/90F 3.5SN OR | PCB plug-in connector, Male connectors, Soldered connection, Pitch: 3.50 mm, No. of poles: 28, 90°, Box |
| 1728740000 | S2L 3.5/28/90F 3.5SN SW | PCB plug-in connector, Male connectors, Soldered connection, Pitch: 3.50 mm, No. of poles: 28, 90°, Box |
| 1728590000 | S2L 3.5/30/90F 3.5SN OR | PCB plug-in connector, Male connectors, Soldered connection, Pitch: 3.50 mm, No. of poles: 30, 90°, Box |
| 1728600000 | S2L 3.5/32/90F 3.5SN OR | PCB plug-in connector, Male connectors, Soldered connection, Pitch: 3.50 mm, No. of poles: 32, 90°, Box |
| 1728760000 | S2L 3.5/32/90F 3.5SN SW | PCB plug-in connector, Male connectors, Soldered connection, Pitch: 3.50 mm, No. of poles: 32, 90°, Box |
| 1756130000 | S2L 3.5/32/90F 3.5AU OR | PCB plug-in connector, Male connectors, Soldered connection, Pitch: 3.50 mm, No. of poles: 32, 90°, Box |
| 1728610000 | S2L 3.5/34/90F 3.5SN OR | PCB plug-in connector, Male connectors, Soldered connection, Pitch: 3.50 mm, No. of poles: 34, 90°, Box |
| 1756300000 | S2L 3.5/34/90F 3.5AU SW | PCB plug-in connector, Male connectors, Soldered connection, Pitch: 3.50 mm, No. of poles: 34, 90°, Box |
| 1728620000 | S2L 3.5/36/90F 3.5SN OR | PCB plug-in connector, Male connectors, Soldered connection, Pitch: 3.50 mm, No. of poles: 36, 90°, Box |
| 1728780000 | S2L 3.5/36/90F 3.5SN SW | PCB plug-in connector, Male connectors, Soldered connection, Pitch: 3.50 mm, No. of poles: 36, 90°, Box |
| 1756150000 | S2L 3.5/36/90F 3.5AU OR | PCB plug-in connector, Male connectors, Soldered connection, Pitch: 3.50 mm, No. of poles: 36, 90°, Box |
| 1756310000 | S2L 3.5/36/90F 3.5AU SW | PCB plug-in connector, Male connectors, Soldered connection, Pitch: 3.50 mm, No. of poles: 36, 90°, Box |

Looking for pricing, stock, or lifecycle information?

Click below to explore more details on WIN SOURCE:

-  [View 1728470000 on WIN SOURCE](#)
-  [Weidmuller Information](#)

Optimize Your Supply Chain with WIN SOURCE Solutions

-  Global Sourcing Solution
-  Obsolete Management
-  Cost Control Management
-  Shortage Management
-  Alternative Solution
-  Excess Inventory Management