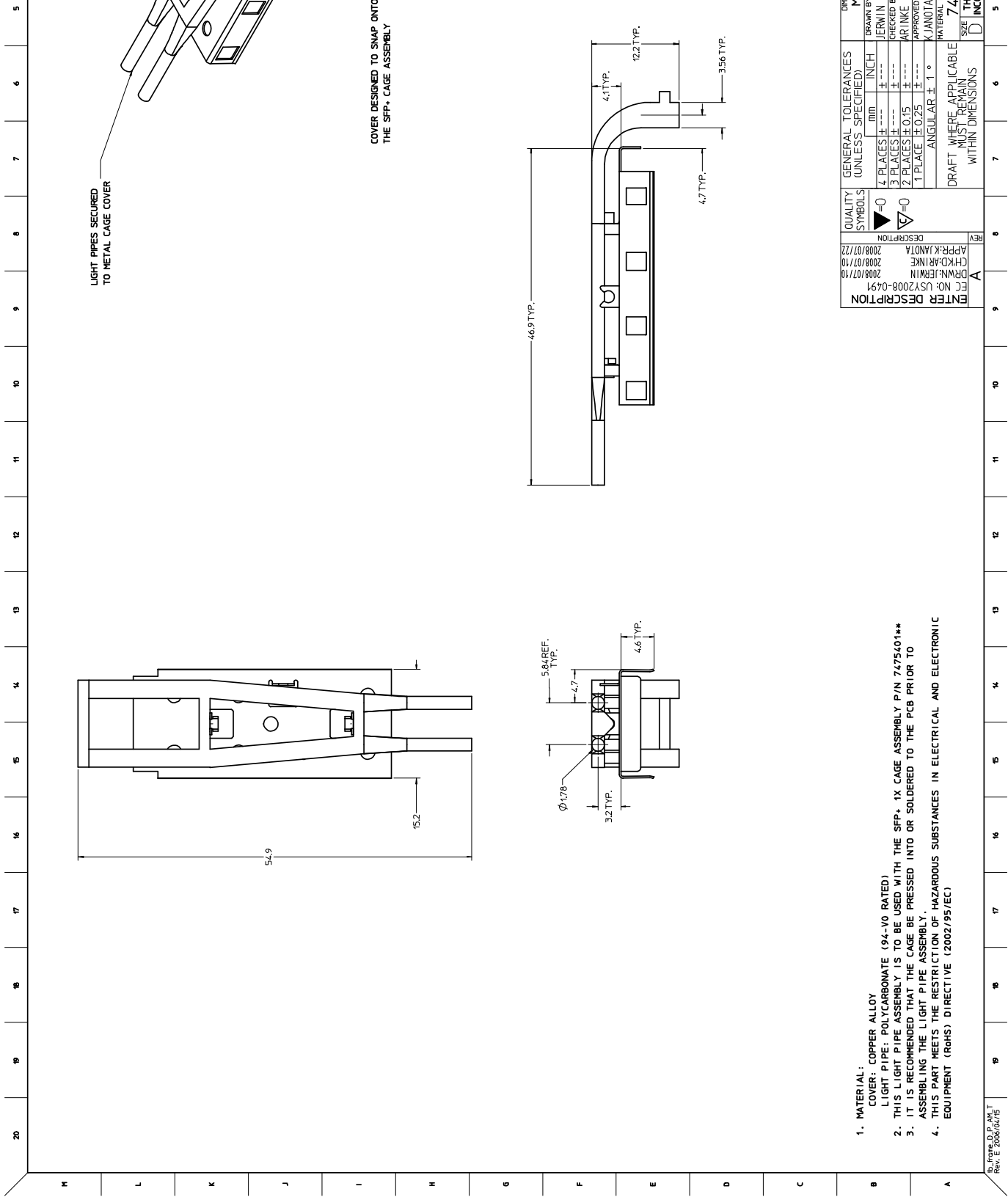




THE DATASHEET OF
747540713

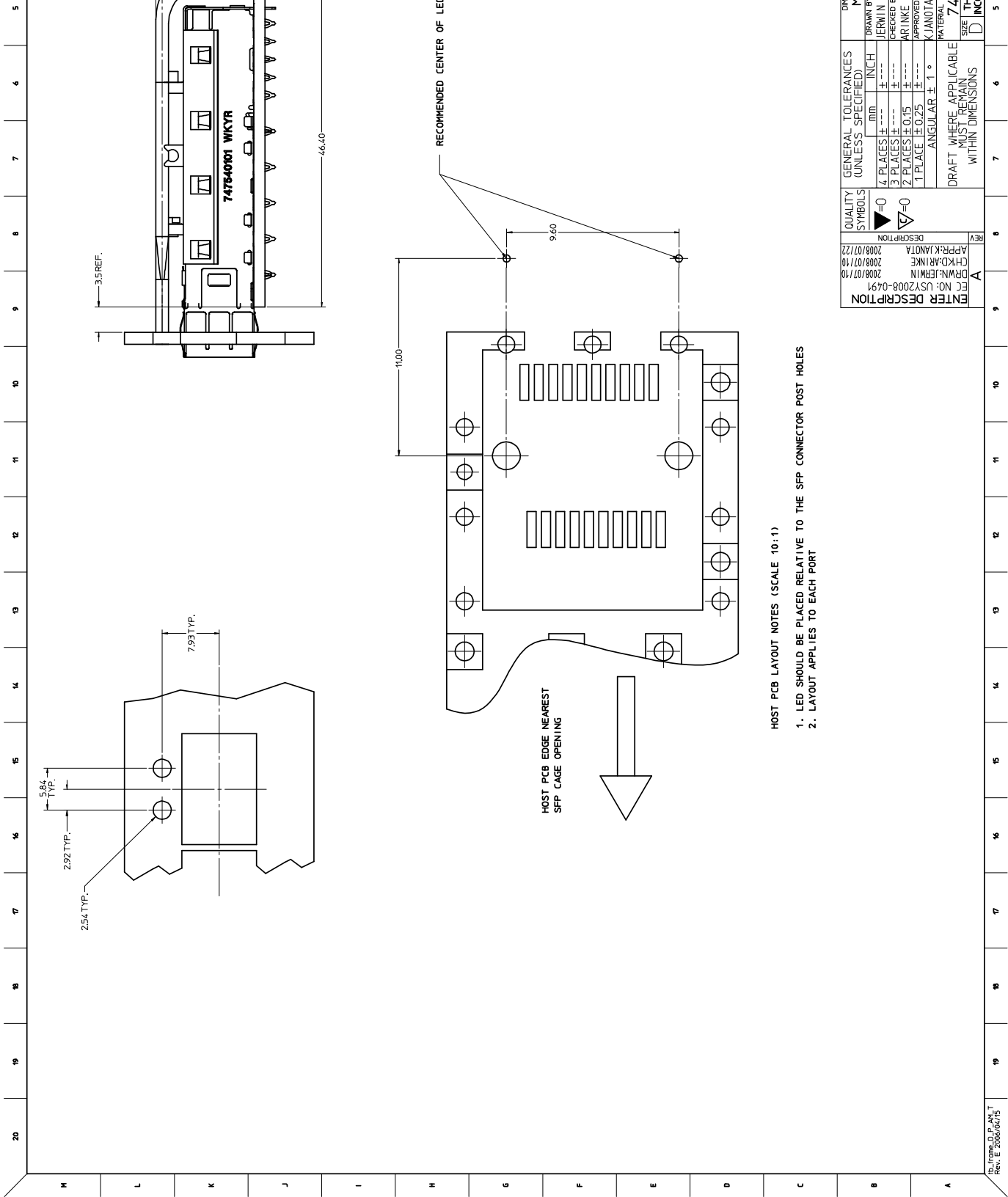




COVER DESIGNED TO SNAP ONTO THE SFP+ CAGE ASSEMBLY

1. MATERIAL:
COVER: COPPER ALLOY
LIGHT PIPE: POLYCARBONATE (94-Y0 RATED)
2. THIS LIGHT PIPE ASSEMBLY IS TO BE USED WITH THE SFP+ 1X CAGE ASSEMBLY P/N 7475401**
3. IT IS RECOMMENDED THAT THE CAGE BE PRESSED INTO OR SOLDERED TO THE PCB PRIOR TO ASSEMBLING THE LIGHT PIPE ASSEMBLY.
4. THIS PART MEETS THE RESTRICTION OF HAZARDOUS SUBSTANCES IN ELECTRICAL AND ELECTRONIC EQUIPMENT (RoHS) DIRECTIVE (2002/95/EC)

ENTER DESCRIPTION	REV	DATE	BY
FORM: JEMIN	A	2008/07/10	CHRM: JEMIN
CHKD: ARINKE		2008/07/10	
APP: KJANOTA		2008/07/22	
DESCRIPTION			
QUALITY SYMBOLS			
0	0		
1 PLACES ±	mm	INCH	DRAWN BY
2 PLACES ±	±	±	JEMIN
3 PLACES ±	±	±	CHECKED
1 PLACE ±	±	±	ARINKE
GENERAL TOLERANCES (UNLESS SPECIFIED)			APPROVED
ANGULAR ± 1°			KJANOTA
DRAFT WHERE APPLICABLE			DATE
MUST REMAIN WITHIN DIMENSIONS			7/4
			SIZE
			D



HOST PCB LAYOUT NOTES (SCALE 10:1)

1. LED SHOULD BE PLACED RELATIVE TO THE SFP CONNECTOR POST HOLES
2. LAYOUT APPLIES TO EACH PORT

REV	DESCRIPTION	QUALITY SYMBOLS	GENERAL TOLERANCES UNLESS SPECIFIED	DATE																			
A	ENTER DESCRIPTION EC NO: USY2008-0491 DRWN: JERMIN CHKD: ARINKE APP: KJANOTA 2008/07/10	<table border="1"> <tr> <td>0</td> <td>4 PLACES ±</td> <td>mm</td> <td>INCH</td> </tr> <tr> <td>1</td> <td>3 PLACES ±</td> <td>mm</td> <td>INCH</td> </tr> <tr> <td>2</td> <td>2 PLACES ±</td> <td>mm</td> <td>INCH</td> </tr> <tr> <td>3</td> <td>1 PLACE ±</td> <td>mm</td> <td>INCH</td> </tr> <tr> <td>4</td> <td>ANGULAR ±</td> <td>1°</td> <td></td> </tr> </table>	0	4 PLACES ±	mm	INCH	1	3 PLACES ±	mm	INCH	2	2 PLACES ±	mm	INCH	3	1 PLACE ±	mm	INCH	4	ANGULAR ±	1°		2008/07/22
0	4 PLACES ±	mm	INCH																				
1	3 PLACES ±	mm	INCH																				
2	2 PLACES ±	mm	INCH																				
3	1 PLACE ±	mm	INCH																				
4	ANGULAR ±	1°																					
			DRAFT WHERE APPLICABLE MUST REMAIN WITHIN DIMENSIONS	7/24																			

Looking for pricing, stock, or lifecycle information?

Click below to explore more details on WIN SOURCE:

 [View 747540713 on WIN SOURCE](#)

 [Molex, LLC Information](#)

Optimize Your Supply Chain with WIN SOURCE Solutions

-  Global Sourcing Solution
-  Obsolete Management
-  Cost Control Management
-  Shortage Management
-  Alternative Solution
-  Excess Inventory Management