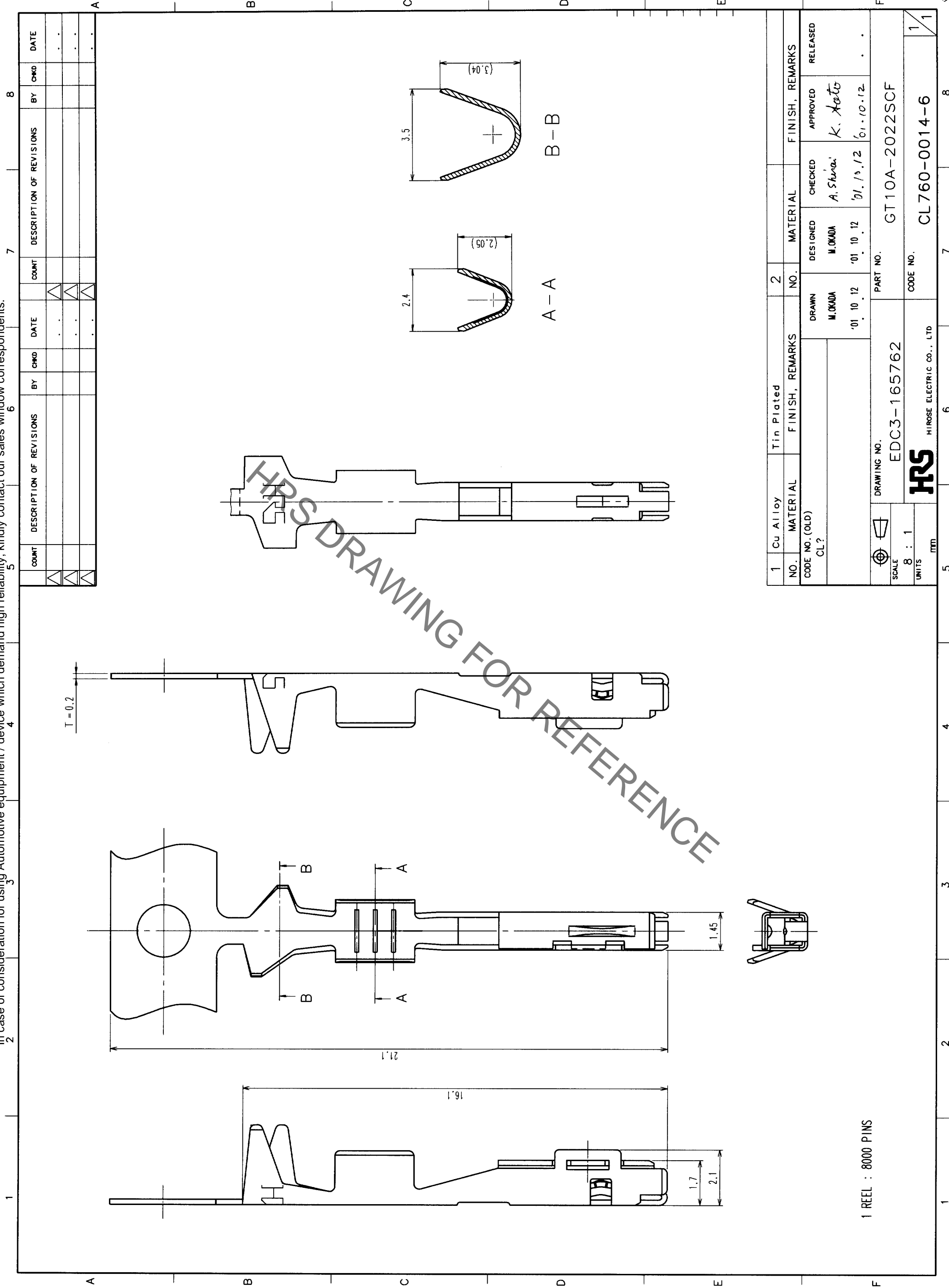




**THE DATASHEET OF
GT10A-2022SCF**



Jan. 1. 2022 Copyright 2022 HIROSE ELECTRIC CO., LTD. All Rights Reserved.
 In case of consideration for using Automotive equipment / device which demand high reliability, kindly contact our sales window correspondents.



TO	

1 REEL : 8000 PINS

COUNT	DESCRIPTION OF REVISIONS	BY	CHKD	DATE	COUNT	DESCRIPTION OF REVISIONS	BY	CHKD	DATE
△									
△									
△									

NO.	MATERIAL	FINISH, REMARKS	NO.	MATERIAL	FINISH, REMARKS
1	Cu Alloy	Tin Plated	2		

CODE NO. (OLD)	CL?	DRAWN	DESIGNED	CHECKED	APPROVED	RELEASED
		M. OKADA	M. OKADA	A. Shiraishi	K. Kato	
		'01. 10. 12	'01. 10. 12	'01. 10. 12	'01. 10. 12	'01. 10. 12

DRAWING NO.	PART NO.
EDC3-165762	GT10A-2022SCF

SCALE	UNITS	CODE NO.
8 : 1	mm	CL760-0014-6

1 2 3 4 5 6 7 8

Mouser Electronics

Authorized Distributor

Click to View Pricing, Inventory, Delivery & Lifecycle Information:

[Hirose Electric:](#)

[GT10A-2022SCF](#)

Looking for pricing, stock, or lifecycle information?

Click below to explore more details on WIN SOURCE:

[View GT10A-2022SCF on WIN SOURCE](#)

[Hirose Electric Co Ltd Information](#)

Optimize Your Supply Chain with WIN SOURCE Solutions

- ✓ Global Sourcing Solution
- ✓ Obsolete Management
- ✓ Cost Control Management
- ✓ Shortage Management
- ✓ Alternative Solution
- ✓ Excess Inventory Management