



**THE DATASHEET OF
ECS-TXO-3225-122.8-TR**

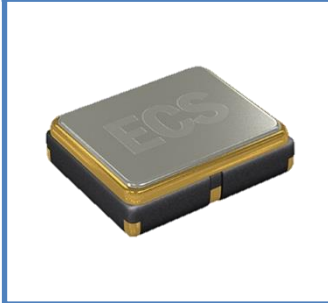


ECS-TXO-3225 (3.3V) HCMOS SMD TCXO and ECS-VTXO-3225 (3.3V) HCMOS SMD VC-TCXO are ideal for portable, wireless applications where stability is critical.

Request a Sample

OPERATING CONDITIONS / ELECTRICAL CHARACTERISTICS

ECS-TXO-3225



- HCMOS TCXO/VC-TCXO
- 3.2 x 2.5 mm Footprint
- PbFree/RoHS Compliant
- Peak solder temp +260°C (10 sec)
- MSL 1
- Lead Finish Au

Parameters	Conditions	ECS-TXO-3225			Units
		MIN	TYP	MAX	
Frequency Range		8.192		40.000	MHz
Operating Temperature	* Standard	-30		+85	°C
Storage Temperature		-40		+90	°C
Input Voltage	VDD	+3.135	+3.3	+3.465	VDC
Frequency Stability	Vs. Temp (-30 ~ +85°C)			±2.5	PPM
	Vs. Supply Change (±5%)			±0.3	PPM
	Vs. Load Change (±5%)			±0.3	PPM
	Vs. Aging/Year			±1.0	PPM
Frequency Tolerance	@ +25°C ±2°C			±1.5	PPM
Current Consumption				6.0	mA
"0" Level	VOL			0.5	VDC
"1" Level	VOH	80% VDD			VDC
Output Symmetry	@50% VDD Level			40/60	%
Rise and Fall Times	10% VDD to 90% Level			10	ns
Output Load	CMOS			15	pF
Start-up Time				2.0	mS
Phase Noise	@ 1 KHz Offset			-135	DBc/Hz
ECS-VTXO-3225 Option					
Control Voltage	Pin 1	+0.15	+1.65	+3.15	VDC
Pullability		±5			PPM

Part Numbering Guide: Example ECS-TXO-3225-250-TR

ECS	Series	Frequency Abbreviations	Stability Tolerance	Temperature	Packaging
ECS	TXO-3225 = TCXO VTXO-3225 = VC-TCXO	250 = 25.000 MHz	<u>Standard</u> Blank = ±2.5 ppm <u>Custom Options</u> B = ±1.5 ppm C = ±1.0 ppm	<u>Standard</u> Blank = -30 ~ +85°C <u>Custom Options</u> * N = -40 ~ +85°C	TR = Tape & Reel

* Consult Factory for availability of ±1 ppm -40 ~ 85°C

Package Dimensions (mm)

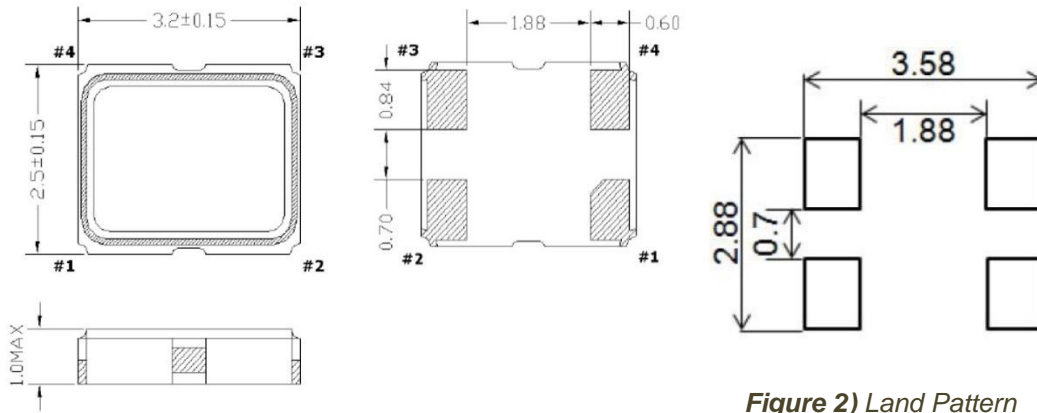


Figure 1) Top, Side, and Bottom views



Figure 2) Land Pattern

Pin Connections	
#1	N/C or V _{CONT}
#2	Ground
#3	Output
#4	VDD

Developed Frequencies	
* Abbreviation	Frequency (MHz)
100	10.000
120	12.000
122.8	12.288
147.4	14.7456
160	16.000
200	20.000
250	25.000
270	27.000

Looking for pricing, stock, or lifecycle information?

Click below to explore more details on WIN SOURCE:

-  [View ECS-TXO-3225-122.8-TR on WIN SOURCE](#)
-  [ECS Inc. Information](#)

Optimize Your Supply Chain with WIN SOURCE Solutions

-  Global Sourcing Solution
-  Obsolete Management
-  Cost Control Management
-  Shortage Management
-  Alternative Solution
-  Excess Inventory Management