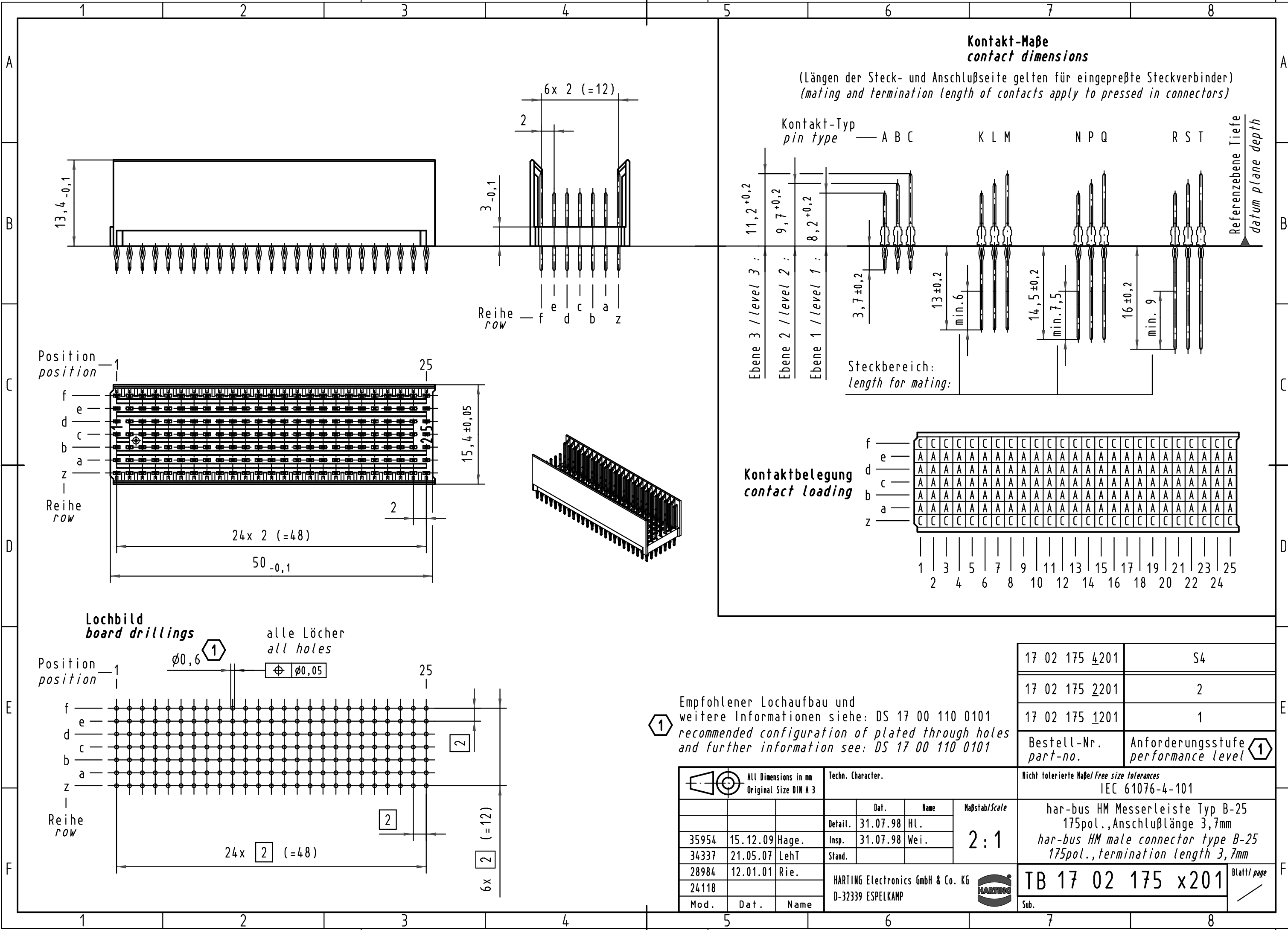




THE DATASHEET OF
17021752201

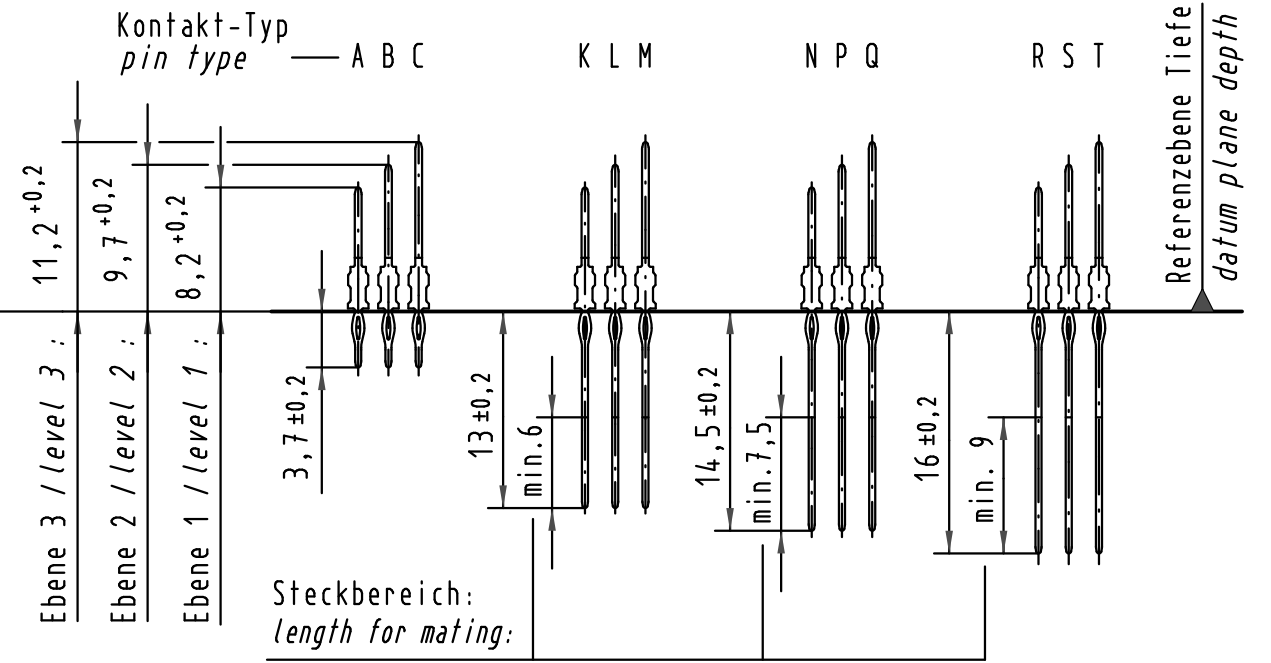


Alle Rechte vorbehalten/ All rights reserved

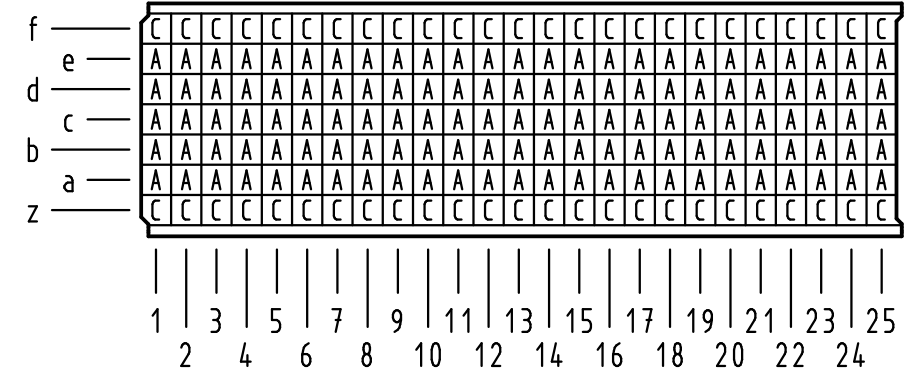


Kontakt-Maße
contact dimensions

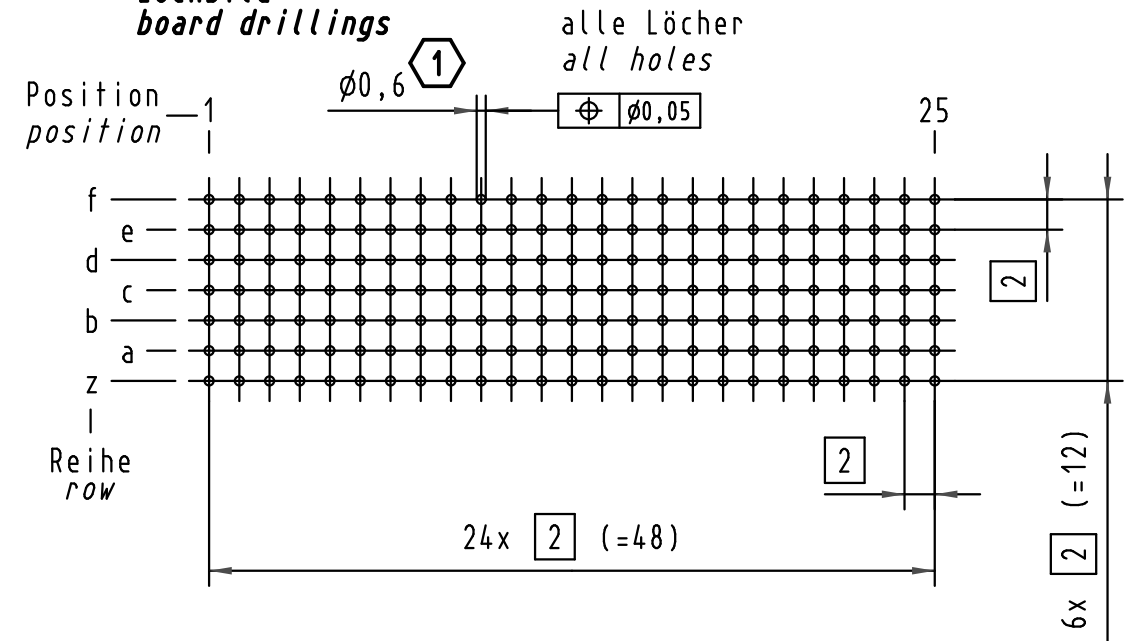
(Längen der Steck- und Anschlußseite gelten für eingepreßte Steckverbinder)
(mating and termination length of contacts apply to pressed in connectors)



Kontaktbelegung
contact loading



Lochbild
board drillings



Empfohlener Lochaufbau und weitere Informationen siehe: DS 17 00 110 0101
recommended configuration of plated through holes and further information see: DS 17 00 110 0101

17 02 175 4201	S4
17 02 175 2201	2
17 02 175 1201	1
Bestell-Nr. / part-no.	Anforderungsstufe / performance level 1

All Dimensions in mm Original Size DIN A 3			Techn. Character.			Nicht tolerierte Maßel / Free size tolerances IEC 61076-4-101		
Mod.	Dat.	Name	Dat.	Name	Maßstab / Scale	har-bus HM Messerleiste Typ B-25 175pol., Anschlußlänge 3,7mm har-bus HM male connector type B-25 175pol., termination length 3,7mm		
35954	15.12.09	Hage.	Detail.	31.07.98	HL.			2:1
34337	21.05.07	LehT	Insp.	31.07.98	Weil.			
28984	12.01.01	Rie.	Stand.					
24118								
HARTING Electronics GmbH & Co. KG D-32339 ESPELKAMP						TB 17 02 175 x201		
						Sub.	Blatt / page	

Looking for pricing, stock, or lifecycle information?

Click below to explore more details on WIN SOURCE:

 [View 17021752201 on WIN SOURCE](#)

 [HARTING Information](#)

Optimize Your Supply Chain with WIN SOURCE Solutions

-  Global Sourcing Solution
-  Obsolete Management
-  Cost Control Management
-  Shortage Management
-  Alternative Solution
-  Excess Inventory Management