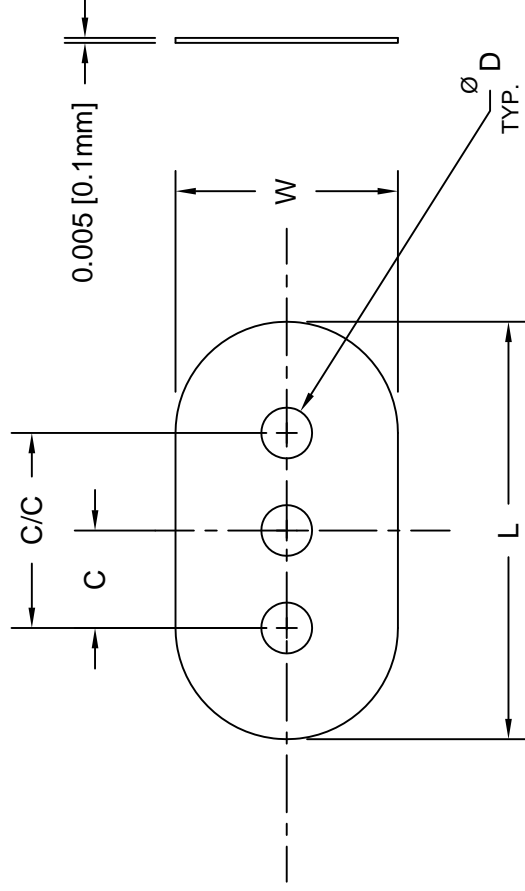


REV.

| | |
|----------|---------------------|
| A | Engineering Update |
| B | Engineering Release |
| C | EOL 12/2010, CI-148 |
| D | Removed Material C |



CI-1XX-XX

| PART NO. | C | C/C | L | D | W |
|-----------------|------------|------------|-------------|------------|------------|
| CI-192-028 | - | .192 (4.9) | .465 (11.8) | .028 (.71) | .219 (5.6) |
| CI-192-028SR* | - | .192 (4.9) | .465 (11.8) | * | .219 (5.6) |
| CI-192-028-3 | .096 (2.4) | .192 (4.9) | .465 (11.8) | .028 (.71) | .219 (5.6) |
| CI-192-028-3SR* | .096 (2.4) | .192 (4.9) | .465 (11.8) | * | .219 (5.6) |
| CI-192-050 | - | .192 (4.9) | .465 (11.8) | .050 (1.3) | .219 (5.6) |
| CI-192-050-3 | .096 (2.4) | .192 (4.9) | .465 (11.8) | .050 (1.3) | .219 (5.6) |

STANDARD TOLERANCES
(UNLESS OTHERWISE SPECIFIED)

DECIMALS

.X ±.1

.XX ±.01

.XXX ±.005

ANGLES

X°



DESIGNED:

T. Yin

DATE:

02/2/02

CHECKED:

D. Green

DATE:

02/2/02

3. * SR STANDS FOR SELF RETAINING LANCED FEATURE.
2. MATERIAL: POLYESTER FILM, 94VTM-2, CLEAR.
1. GENERAL SPECIFICATIONS: BIVAR MOLDED COMPONENT SPECIFICATION BV00-E101.

Looking for pricing, stock, or lifecycle information?

Click below to explore more details on WIN SOURCE:

 [View CI-192-028 on WIN SOURCE](#)

 [Bivar Inc. Information](#)

Optimize Your Supply Chain with WIN SOURCE Solutions

-  Global Sourcing Solution
-  Obsolete Management
-  Cost Control Management
-  Shortage Management
-  Alternative Solution
-  Excess Inventory Management