



**THE DATASHEET OF
CRD485-232**



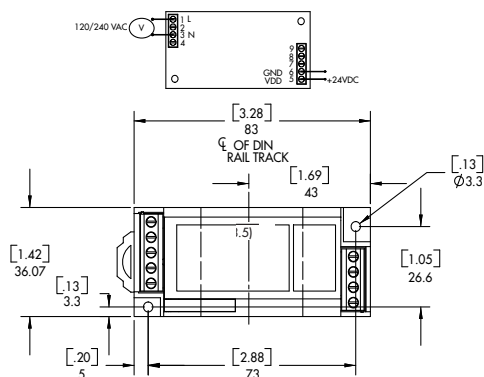


The **CRPS24VDC** Series Power supplies are designed to meter CR Magnetics digital and analog transducers. These switched mode power supplies are compact and efficient with a modern clean looking case.

Features

- 35mm DIN Rail or Panel Mount
- Available with 120Vac/Vdc and 240Vac/Vdc Input
- 24 VDC Powered
- Use with CR Magnetics Transducers
- Highest precision available
- Connection diagram printed on case

Regulatory Agencies



CONNECTION DIAGRAM

Specifications

Input Voltage	120V, 240V ± 10% 50/60Hz
Rated Output	200mA
Output Voltage	+24VDC
Output Ripple	≤ 10 mV

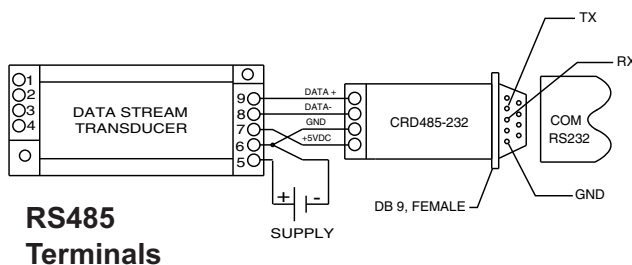
PART NUMBERS

CRPS24VDC	-		Power Supply
------------------	---	--	--------------

- 120** - 120V Power Supply
- 240** - 240V Power Supply with 24 VDC Output

CRD485-232

RS485 to RS232 Converter Accessory
Connect PC to RS485 Bus



Looking for pricing, stock, or lifecycle information?

Click below to explore more details on WIN SOURCE:

 [View CRD485-232 on WIN SOURCE](#)

 [CR Magnetics Inc. Information](#)

Optimize Your Supply Chain with WIN SOURCE Solutions

-  Global Sourcing Solution
-  Obsolete Management
-  Cost Control Management
-  Shortage Management
-  Alternative Solution
-  Excess Inventory Management