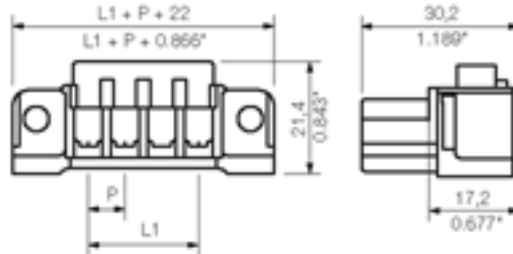
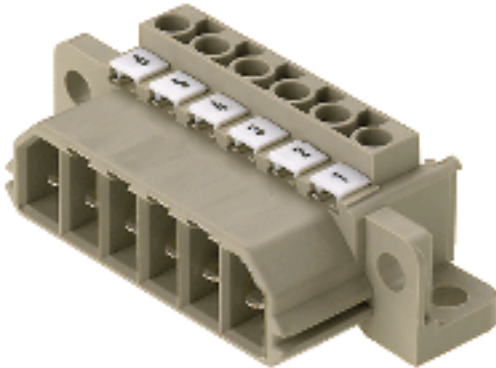




**THE DATASHEET OF**  
**1611950000**





#### General ordering data

Order No.	1611950000
Part designation	STV S 2 SS
Version	PCB plug-in connector, Male connectors, Leaf spring connection, Clamping range, max.: 4 mm <sup>2</sup> , Pitch: 7.00 mm, No. of poles: 2, 180°, Box
EAN	4008190198664
Qty.	10 pc(s).

#### System parameters

Conductor connection system	Leaf spring connection
Outgoing direction of conductor	180°
Pitch	7 mm
Pitch in inch	0.276 inch
No. of poles	2
No. of rows	1
Screwdriver blade	0.6 x 3.5
Screwdriver blade standard	DIN 5264
Tightening torque, min.	0.5 Nm
Tightening torque, max.	0.6 Nm
Clamping screw	M 3
Stripping length	9 mm
L1 in mm	7 mm
L1 in inch	0.276 inch
Electric shock protection to DIN VDE 0470	IP20 plugged
Electric shock protection to DIN VDE 0470	Safe from finger touch, plugged

#### Material data

Insulating material	Wemid (PA)
Colour	pebble grey
colour chart	Similar to RAL 7032
Insulating material group	I
Flammability class UL 94	V-0
CTI	>= 600
Contact base material	CuZn

#### Material data

Contact surface	silver-plated
-----------------	---------------

#### Connectable conductors

Clamping range, min.	0.5 mm <sup>2</sup>
Clamping range, max.	4 mm <sup>2</sup>
AWG, min.	22
AWG, max.	12
Solid, min. H05(07) V-U	0.5 mm <sup>2</sup>
Solid, max. H05(07) V-U	4 mm <sup>2</sup>
Flexible, min. H05(07) V-K	0.5 mm <sup>2</sup>
Flexible, max. H05(07) V-K	4 mm <sup>2</sup>
With wire end ferrule, acc. to DIN 46 228/1, min.	0.5 mm <sup>2</sup>
With wire end ferrule, acc. to DIN 46 228/1, max.	4 mm <sup>2</sup>
w. plastic collar ferrule, DIN 46228 pt 4, min.	0.5 mm <sup>2</sup>
w. plastic collar ferrule, DIN 46228 pt 4, max.	4 mm <sup>2</sup>
Gauge to EN 60999 a x b; ø	2.8 mm x 2.0 mm;

#### DIN IEC rating data

Rated current, min. No. pins (Tu=20°C)	32 A
Rated current, max. No. pins (Tu=20°C)	28 A
Rated current, min. No. pins (Tu=40°C)	32 A
Rated current, max. No. pins (Tu=40°C)	24 A
Rated voltage for overvoltage class/pollution severity II/2	1,000 V
Rated voltage for overvoltage class/pollution severity III/2	500 V
Rated voltage for overvoltage class/pollution severity III/3	500 V
Rated impulse withstand voltage for overvoltage class/pollution severity II/2	6 kV
Rated impulse withstand voltage for overvoltage class/pollution severity III/2	6 kV
Rated impulse withstand voltage for overvoltage class/pollution severity III/3	6 kV
Short-time withstand current resistance	3 x 1s with 340 A

#### CSA rating data

Rated voltage (Use group D)	300 V
Rated current (Use group D)	25 A
AWG conductor (field wiring), min.	20
AWG conductor (field wiring), max.	12

#### UL 1977 rating data

Rated voltage (UL 1977)	600 V
Rated current (UL 1977)	25 A
AWG-conductor, min. (UL 1977)	22
AWG-conductor, max. (UL 1977)	12

### Approvals

Approvals institutes



### Classifications

ETIM 2.0	NK
ETIM 3.0	EC001284
eClass 4.1	27-26-07-01
eClass 5.0	27-26-07-01
eClass 5.1	27-26-07-01

### Similar products

Order No.	Part designation	Version
1611980000	STV S 3 SS	PCB plug-in connector, Male connectors, Leaf spring connection, Clamping range, max.: 4 mm <sup>2</sup> , Pitch: 7.00 mm, No. of poles: 3, 180°, Box
1612010000	STV S 4 SS	PCB plug-in connector, Male connectors, Leaf spring connection, Clamping range, max.: 4 mm <sup>2</sup> , Pitch: 7.00 mm, No. of poles: 4, 180°, Box
1612040000	STV S 5 SS	PCB plug-in connector, Male connectors, Leaf spring connection, Clamping range, max.: 4 mm <sup>2</sup> , Pitch: 7.00 mm, No. of poles: 5, 180°, Box
1612070000	STV S 6 SS	PCB plug-in connector, Male connectors, Leaf spring connection, Clamping range, max.: 4 mm <sup>2</sup> , Pitch: 7.00 mm, No. of poles: 6, 180°, Box
1612100000	STV S 7 SS	PCB plug-in connector, Male connectors, Leaf spring connection, Clamping range, max.: 4 mm <sup>2</sup> , Pitch: 7.00 mm, No. of poles: 7, 180°, Box
1612130000	STV S 8 SS	PCB plug-in connector, Male connectors, Leaf spring connection, Clamping range, max.: 4 mm <sup>2</sup> , Pitch: 7.00 mm, No. of poles: 8, 180°, Box
1612160000	STV S 9 SS	PCB plug-in connector, Male connectors, Leaf spring connection, Clamping range, max.: 4 mm <sup>2</sup> , Pitch: 7.00 mm, No. of poles: 9, 180°, Box
1612190000	STV S 10 SS	PCB plug-in connector, Male connectors, Leaf spring connection, Clamping range, max.: 4 mm <sup>2</sup> , Pitch: 7.00 mm, No. of poles: 10, 180°, Box

## Looking for pricing, stock, or lifecycle information?

Click below to explore more details on WIN SOURCE:

 [View 1611950000 on WIN SOURCE](#)

 [Weidmuller Information](#)

## Optimize Your Supply Chain with WIN SOURCE Solutions

-  Global Sourcing Solution
-  Obsolete Management
-  Cost Control Management
-  Shortage Management
-  Alternative Solution
-  Excess Inventory Management