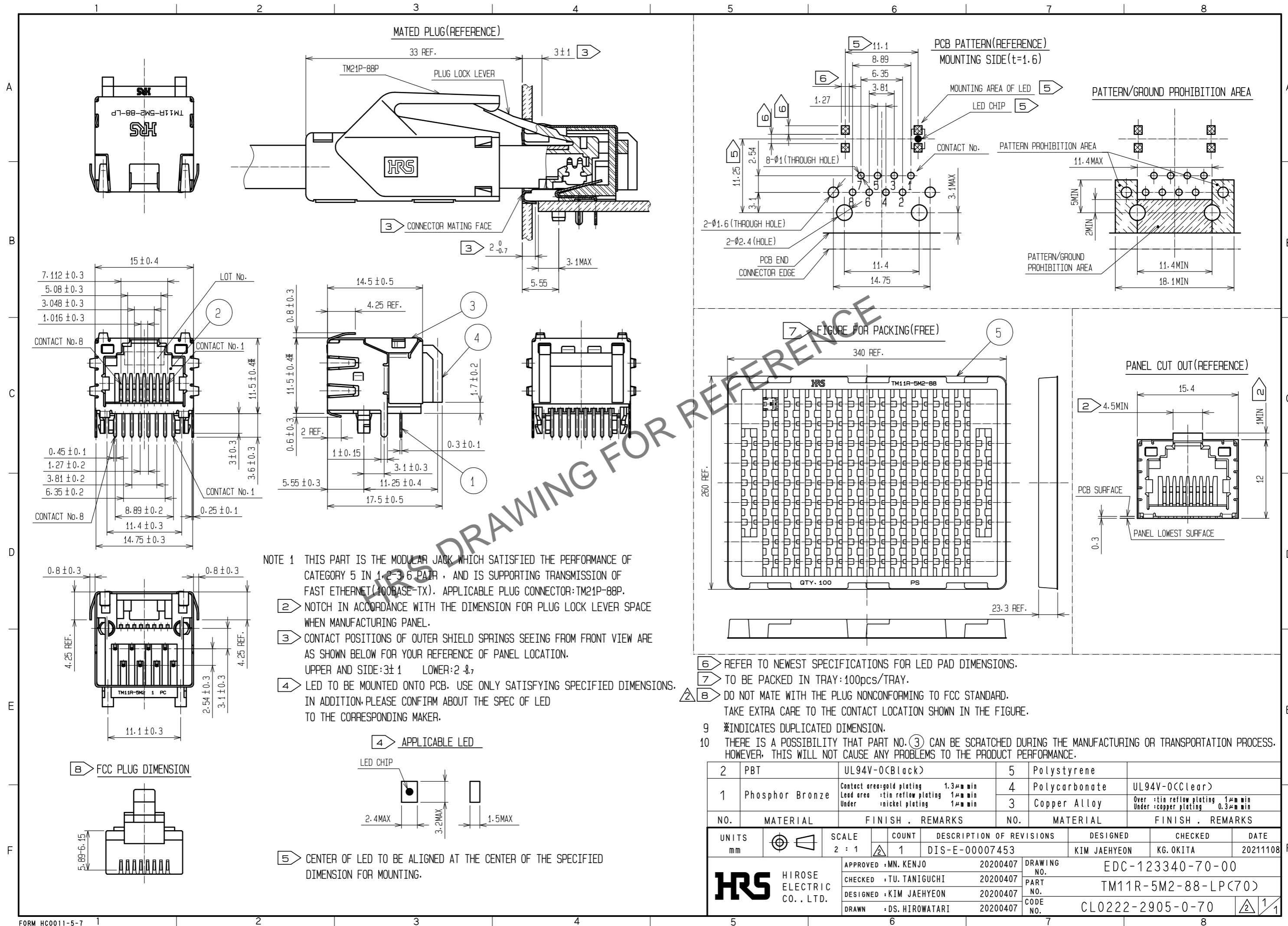




**THE DATASHEET OF
TM11R-5M2-88-LP(70)**



May.1.2024 Copyright 2024 HIROSE ELECTRIC CO., LTD. All Rights Reserved.
In case of consideration for using Automotive equipment / device which demand high reliability, kindly contact our sales window correspondents.



NOTE 1 THIS PART IS THE MODULAR JACK WHICH SATISFIED THE PERFORMANCE OF CATEGORY 5 IN 100BASE-TX, AND IS SUPPORTING TRANSMISSION OF FAST ETHERNET(100BASE-TX). APPLICABLE PLUG CONNECTOR:TM21P-88P.

2 NOTCH IN ACCORDANCE WITH THE DIMENSION FOR PLUG LOCK LEVER SPACE WHEN MANUFACTURING PANEL.

3 CONTACT POSITIONS OF OUTER SHIELD SPRINGS SEEING FROM FRONT VIEW ARE AS SHOWN BELOW FOR YOUR REFERENCE OF PANEL LOCATION.
UPPER AND SIDE:3±1 LOWER:2±0.7

4 LED TO BE MOUNTED ONTO PCB. USE ONLY SATISFYING SPECIFIED DIMENSIONS. IN ADDITION,PLEASE CONFIRM ABOUT THE SPEC OF LED TO THE CORRESPONDING MAKER.

- 5 REFER TO NEWEST SPECIFICATIONS FOR LED PAD DIMENSIONS.
- 6 TO BE PACKED IN TRAY:100pcs/TRAY.
- 7 DO NOT MATE WITH THE PLUG NONCONFORMING TO FCC STANDARD. TAKE EXTRA CARE TO THE CONTACT LOCATION SHOWN IN THE FIGURE.
- 8 *INDICATES DUPLICATED DIMENSION.
- 9 THERE IS A POSSIBILITY THAT PART NO. 3 CAN BE SCRATCHED DURING THE MANUFACTURING OR TRANSPORTATION PROCESS. HOWEVER, THIS WILL NOT CAUSE ANY PROBLEMS TO THE PRODUCT PERFORMANCE.

2	PBT	UL94V-0(Black)	5	Polystyrene	
1	Phosphor Bronze	Contact area:gold plating 1.3µm min Lead area :tin reflow plating 1µm min Under :nickel plating 1µm min	4	Polycarbonate	
			3	Copper Alloy	
				Over :tin reflow plating 1µm min Under :copper plating 0.3µm min	
NO.	MATERIAL	FINISH . REMARKS	NO.	MATERIAL	FINISH . REMARKS
UNITS	mm	SCALE	2 : 1	COUNT	1
		DESCRIPTION OF REVISIONS	DESIGNED	CHECKED	DATE
		DIS-E-00007453	KIM JAEHYEON	KG. OKITA	20211108
		APPROVED :MN. KENJO	20200407	DRAWING NO.	EDC-123340-70-00
		CHECKED :TU. TANIGUCHI	20200407	PART NO.	TM11R-5M2-88-LP(70)
		DESIGNED :KIM JAEHYEON	20200407	CODE NO.	CL0222-2905-0-70
		DRAWN :DS. HIROWATARI	20200407		

Mouser Electronics

Authorized Distributor



Click to View Pricing, Inventory, Delivery & Lifecycle Information:

[Hirose Electric:](#)

[TM11R-5M2-88-LP\(70\)](#)

Looking for pricing, stock, or lifecycle information?

Click below to explore more details on WIN SOURCE:

-  [View TM11R-5M2-88-LP\(70\) on WIN SOURCE](#)
-  [Hirose Electric Co Ltd Information](#)

Optimize Your Supply Chain with WIN SOURCE Solutions

-  Global Sourcing Solution
-  Obsolete Management
-  Cost Control Management
-  Shortage Management
-  Alternative Solution
-  Excess Inventory Management