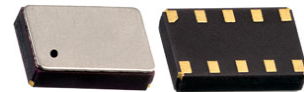




**THE DATASHEET OF
AB-RTCMC-32.768KHZ-B5ZE-S3-T**



Real Time Clock Module with I²C Bus



3.7 x 2.5 x 0.9 mm

AB-RTCMC-32.768kHz-B5ZE-S3



RoHS/RoHS II compliant

Moisture Sensitivity Level: MSL=1

FEATURES:

- RTC module with built-in crystal oscillating at 32.768 kHz
- 1 MHz Fast-mode Plus (Fm+) two-wire I2C interface
- Wide Interface operating voltage: 1.6 – 5.5 V
- Wide clock operating voltage: 1.2 – 5.5 V
- Ultra low power consumption: 130 nA typ @ 3.0V / 25°C
- Provides year, month, day, weekday, hours, minutes, seconds
- Freely programmable Alarm and Timer functions with interrupt capability
- Low voltage detector, internal power on reset
- Battery backup input pin and switch-over circuit
- INT_1 can be programmed either as interrupt or clock output (open-drain)
- Programmable clock output for peripheral devices (32.768 kHz, 16.384 kHz, 8192 Hz, 4096 Hz, 1024 Hz, 32 Hz and 1 Hz)
- Programmable offset register for frequency adjustment
- I2C slave address: read D1h, write D0h
- Small and compact package size: 3.7 x 2.5 x 0.9 mm. RoHS-compliant and 100% leadfree

APPLICATIONS:

- Wide range in communication & measuring equipment
- Commercial & Industrial applications
- Automotive electronics applications
- Wireless communications
- PDA and Palm Pilots
- Credit Cards with Security Technology

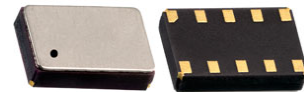
STANDARD SPECIFICATIONS:

Absolute Maximum Ratings

Parameters	Min.	Typ.	Max.	Units	Notes
Supply Voltage (V _{DD})	-0.5		+6.5	V	
Battery Supply voltage (V _{BACKUP})	-0.5		+6.5	V	
Input Voltage (V _I)	-0.5		+6.5	V	
Output Voltage (V _O)	-0.5		+6.5	V	
Supply Current (I _{DD})	-50		+50	mA	
DC Input Current (I _I)	-10		+10	mA	
DC Output Current (I _O)	-10		+10	mA	
Operating Temperature Range (T _{OPR})	-40		+85	°C	
Storage Temperature (T _{STO})	-55		+125	°C	Stored as bare product

Frequency Characteristics

Parameters	Min.	Typ.	Max.	Units	Notes
Frequency Accuracy (ΔF/F)		±10	±20	ppm	T _{AMB} = +25°C; V _{DD} = 3.0V
Frequency vs Voltage (ΔF/V)		±0.8	±1.5	ppm/V	T _{AMB} = +25°C; V _{DD} = 1.8~5.5V
Frequency vs Temperature ΔF/T _{OPR})	-0.035ppm/°C ² (T _{OPR} - T _O) ² ±10%			ppm	T _{REF} = +25°C; V _{DD} = 3.0V
Turnover Temperature (T _O)	+20	+25	+30	°C	
Aging (fir st year)	-3		+3	ppm	T _{AMB} = +25°C
Oscillator Start-up Time (T _{START})		350	500	ms	T _{AMB} = +25°C
CLKOUT duty cycle	40	50	60	%	T _{AMB} = +25°C



3.7 x 2.5 x 0.9 mm

AB-RTCMC-32.768kHz-B5ZE-S3

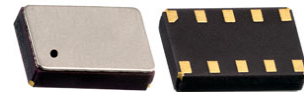


RoHS/RoHS II compliant

Static Characteristics

$V_{DD} = 1.2V$ to $5.5V$; $V_{SS} = 0V$; $T_{AMB} = -40^{\circ}C$ to $+85^{\circ}C$; $f_{OSC} = 32.768$ kHz; unless otherwise specified

Parameters		Min.	Typ.	Max.	Units	Notes
Supply Voltage (V_{DD})	For clock data integrity I ² C bus inactive	1.2		5.5	V	
	I ² C bus active	1.6		5.5		
	Power management function active	1.8		5.5		
Slew Rate (SR)	Of V_{DD}			± 0.5	V/ms	
Battery Supply Voltage (V_{BACKUP})	Power management function active	1.8		5.5	V	
Current Consumption (I_{DD}) I ² C bus active	$f_{SCL} = 1000$ kHz $V_{DD} = 3.0V$		100	200	μA	
	$f_{SCL} = 100$ kHz $V_{DD} = 3.0V$		50	100	μA	
Current Consumption (I_{DD0}) ¹⁾	$V_{DD} = 3.0V$		130	180	nA	I ² C bus inactive ($f_{SCL} = 0$ Hz) Interrupts disabled CLKOUT disabled Power management fct. disabled (PM[2:0] = 111) $T_{amb} = +25^{\circ}C$
	$V_{DD} = 2.0V$		110	160	nA	
Current Consumption (I_{DD0}) ¹⁾	$V_{DD} = 2.0$ to $5.0V$			500	nA	I ² C bus inactive ($f_{SCL} = 0$ Hz) Interrupts disabled CLKOUT disabled Power management fct. disabled (PM[2:0] = 111) $T_{amb} = -40 \sim +85^{\circ}C$
Current Consumption (I_{DD32k}) ²⁾	V_{BACKUP} or $V_{DD} = 3.0V$		1200		nA	I ² C bus inactive ($f_{SCL} = 0$ Hz) Interrupts disabled CLKOUT enabled (32.768kHz) Power management fct. enabled (PM[2:0] = 00 0) $T_{amb} = +25^{\circ}C$
Current Consumption (I_{DD32k}) ²⁾	V_{BACKUP} or $V_{DD} = 2.0$ to $5.0V$			3600	nA	I ² C bus inactive ($f_{SCL} = 0$ Hz) Interrupts disabled CLKOUT enabled (32.768kHz) Power management fct. enabled (PM[2:0] = 000) $T_{amb} = -40 \sim +85^{\circ}C$
Battery Leakage Current ($I_{L(bat)}$)	V_{DD} active; $V_{BACKUP} = 3.0V$		50	100	nA	



(Continued)

$V_{DD} = 1.2\text{ V to } 5.5\text{ V}$; $V_{SS} = 0\text{ V}$; $T_{AMB} = -40^{\circ}\text{C to } +85^{\circ}\text{C}$; $f_{OSC} = 32.768\text{ kHz}$; unless otherwise specified

Parameters		Min.	Typ.	Max.	Units	Notes
Power Management						
Battery Switch Threshold Voltage ($V_{th(sw)bat}$)		2.28	2.5	2.7	V	
Inputs ³⁾						
LOW Level Input Voltage (V_{IL})				$30\%V_{DD}$	V	
HIGH Level Input Voltage (V_{IH})		$70\%V_{DD}$			V	
Input Voltage (V_I)		-0.5		$V_{DD}+0.5$	V	
Input Leakage Current(I_L)	$V_I = V_{DD}$ or V_{SS}		0		nA	
	Post ESD Event	-1		+1	μA	
Input Capacitance(C_I) ⁴⁾				7	pF	
Outputs						
Output Voltage (V_O)	On pin $\overline{\text{INT}}_1$, $\overline{\text{INT}}_2$, CLKOUT, SDA (refers to ext. pull-up voltage)	-0.5		+5.5	V	
LOW Level Output Voltage (V_{OL})		V_{SS}		0.4	V	
LOW Level Output Current (I_{OL}) ⁵⁾	Output sink current; On pin $\overline{\text{INT}}_1$, $\overline{\text{INT}}_2$, CLKOUT $V_{OL}=0.4\text{V}$; $V_{DD}=5.0\text{V}$	1.5			mA	
	On pin SDA $V_{OL}=0.4\text{V}$; $V_{DD}=3.0\text{V}$	20			mA	
Output Leakage Current (I_{LO})	$V_O = V_{DD}$ or V_{SS}		0		nA	
	Post ESD Event	-1		+1	μA	

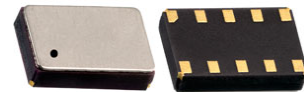
1) Timer source clock = 1/3600 Hz, level of pins SCL and SDA is V_{SS} or V_{DD} .

2) When the device is supplied via the V_{BACKUP} pin instead of the V_{DD} pin, the current values for I_{BACKUP} will be as specified for I_{DD} under the same conditions.

3) The I²C bus is 5V tolerant.

4) Implicit by design.

5) Tested on sample basis.



I²C Interface Dynamic Characteristics

Parameters	Symbol	Standard Mode		Fast Mode (FM)		Fast Mode Plus (FM+) ¹⁾		Units
		Min.	Max.	Min.	Max.	Min.	Max.	
Pin SCL								
SCL clock frequency ²⁾	f _{SCL}		100		400		1000	kHz
LOW period of SCL clock	t _{LOW}	4.7		1.3		0.5		μs
HIGH period of SCL clock	t _{HIGH}	4.0		1.6		0.26		μs
Pin SDA								
Data setup time	t _{SU;DAT}	250		100		50		ns
Data hold time	t _{HD;DAT}	0		0		0		ns
Pin SCL and SDA								
Bus free time between STOP and START condition	t _{BUF}	4.7		1.3		0.5		μs
Setup time for STOP condition	t _{SU;STO}	4.0		0.6		0.26		μs
Hold time (repeated) START condition	t _{HD;STA}	4.0		0.6		0.26		μs
Setup time for repeated START condition	t _{SU;STA}	4.7		0.6		0.26		μs
Rise time of both SDA and SCL signals ^{3) 4)}	t _r		1000	20+0.1C _b	300		120	ns
Fall time of both SDA and SCL signals ^{3) 4)}	t _f		300	20+0.1C _b	300		120	ns
Capacitive load for each bus line	C _b		400		400		550	pF
Data valid acknowledge time ⁵⁾	t _{VD;ACK}		3.45		0.9		0.45	μs
Data valid time ⁶⁾	t _{VD;DAT}		3.45		0.9		0.45	μs
Pulse width of spikes that must be suppressed by the input filter ⁷⁾	t _{SP}		50		50		50	ns

1) Fast mode plus guaranteed at 3.0 V < V_{DD} < 5.5 V.

2) The minimum SCL clock frequency is limited by the bus timeout feature, which resets the serial bus interface if either the SDA or SCL is held LOW for a minimum of 25 ms. The bus timeout feature must be disabled for DC operation.

3) A master device must internally provide a hold time of at least 300 ns for the SDA signal (refer to the V_{IL} of the SCL signal) in order to bridge the undefined region of the falling edge of SCL.

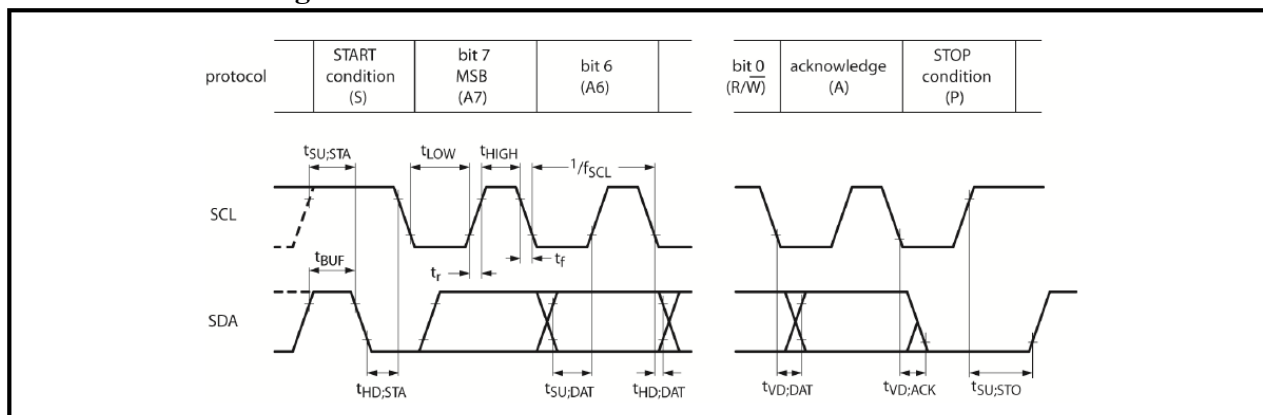
4) The maximum t_r for the SDA and SCL bus lines is 300 ns. The maximum fall time for the SDA output stage, t_f is 250 ns. This allows series protection resistors to be connected between the SDA pin, the SCL pin and the SDA/SCL bus lines without exceeding the maximum t

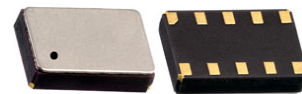
5) t_{VD;ACK} = time for acknowledgement signal from SCL LOW to SDA output LOW.

6) t_{VD;DAT} = minimum time for valid SDA output following SCL LOW.

7) Input filters on the SDA and SCL inputs suppress noise spikes of less than 50 ns.

I²C Interface Timing Characteristics





3.7 x 2.5 x 0.9 mm

AB-RTCMC-32.768kHz-B5ZE-S3



RoHS/RoHS II compliant

PART IDENTIFICATIONS:

AB -RTCMC -32.768 kHz-B5ZE -S3-

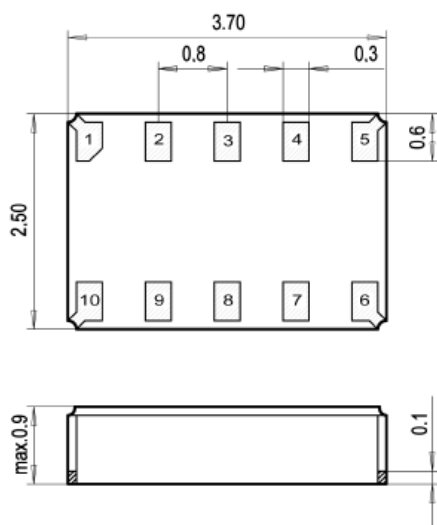


Packaging

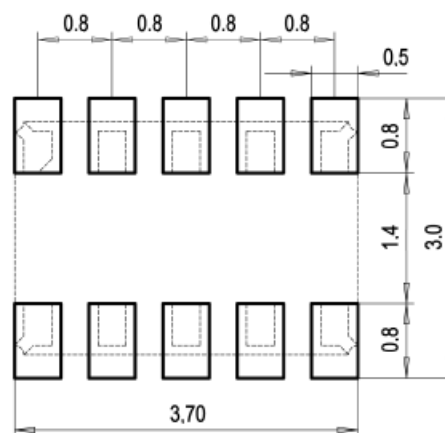
Blank: Bulk

T: 1000pcs/reel

OUTLINE DIMENSIONS:



Recommended Land Pattern



Dimensions: mm

PIN DESCRIPTIONS:

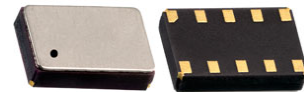
Pin No.	Pin Name	Function
1	V _{DD}	Power Supply Voltage
2	INT_1	Interrupt_1 Output pin
3	SCL	Serial Clock Input pin
4	SDA	Serial Data Input-Output pin
5	CLKOUT	Clock Output pin; open-drain; requires pull-up resistor
6	INT_2	Interrupt_2 Output pin
7	V _{SS}	Ground
8	V _{BACKUP}	Backup Supply Voltage
9	N.C.	Not Connected
10	N.C.	Not Connected

Real Time Clock Module with I²C Bus

AB-RTCMC-32.768kHz-B5ZE-S3

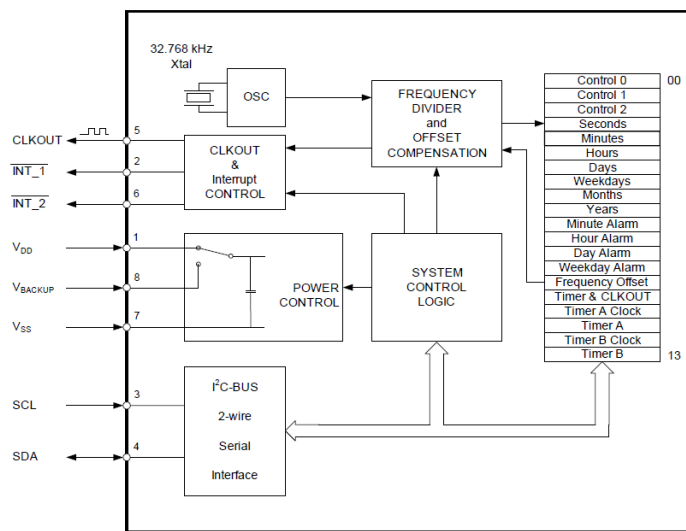


RoHS/RoHS II compliant



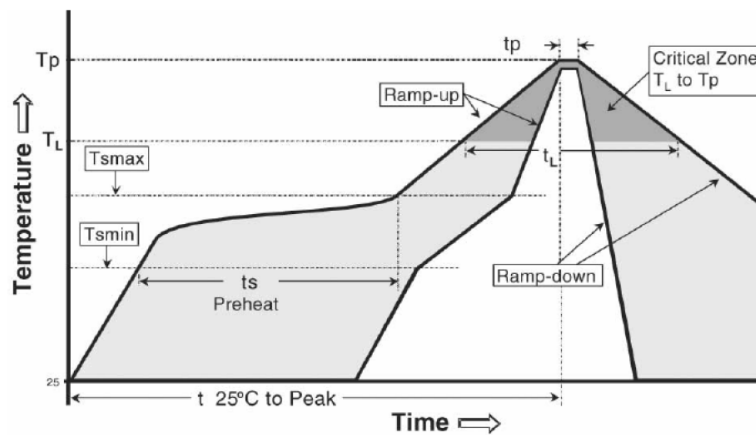
3.7 x 2.5 x 0.9 mm

BLOCK DIAGRAM:



RECOMMENDED REFLOW PROFILE:

Maximum Reflow Conditions in accordance with IPC/JEDEC J-STD-020C “Pb-free”



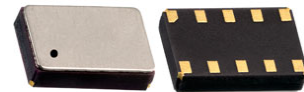
Temperature	Conditions	Units
Average Ramp-up Rate (T_{Smax} to T_p)	3°C/second max	°C/s
Ramp Down Rate (T_{cool})	6°C/second max	°C/s
Time 25°C to Peak Temperature ($T_{to-peak}$)	8 minutes max	m
Preheat		
Temperature Min (T_{Smin})	150	°C
Temperature Max (T_{Smax})	200	°C
Time T_{Smin} to T_{Smax} (t_s)	60 ~ 180	sec
Time Above Liquidus		
Temperature Liquidus (T_L)	217	°C
Time above Liquidus (t_L)	60 ~ 150	sec
Peak Temperature		
Peak Temperature (T_p)	260	°C
Time within 5°C of Peak Temperature (t_p)	20 ~ 40	sec

Real Time Clock Module with I²C Bus

AB-RTCMC-32.768kHz-B5ZE-S3



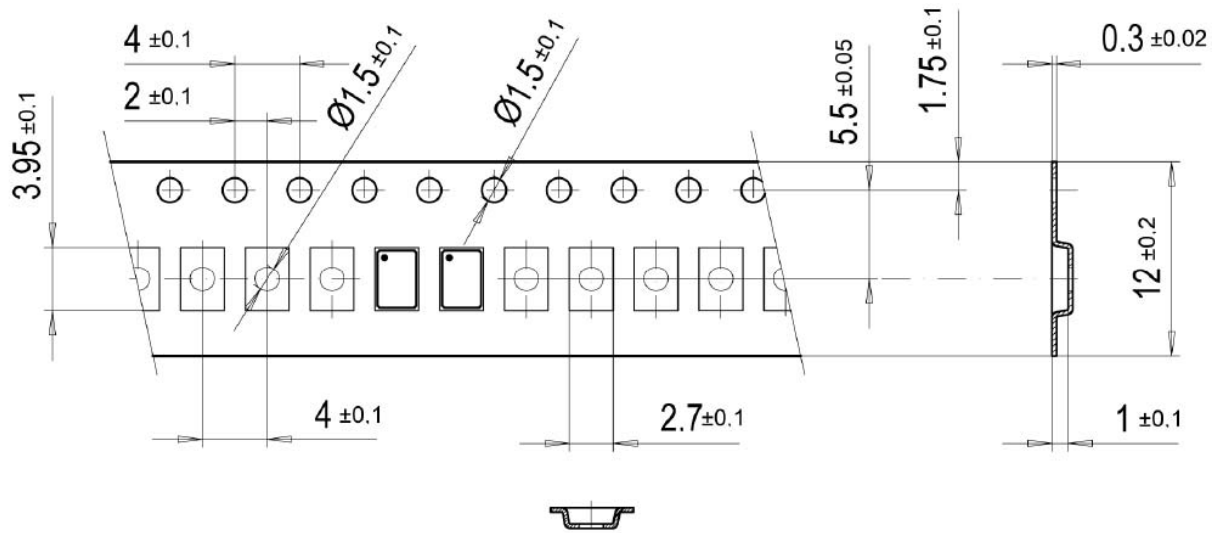
RoHS/RoHS II compliant



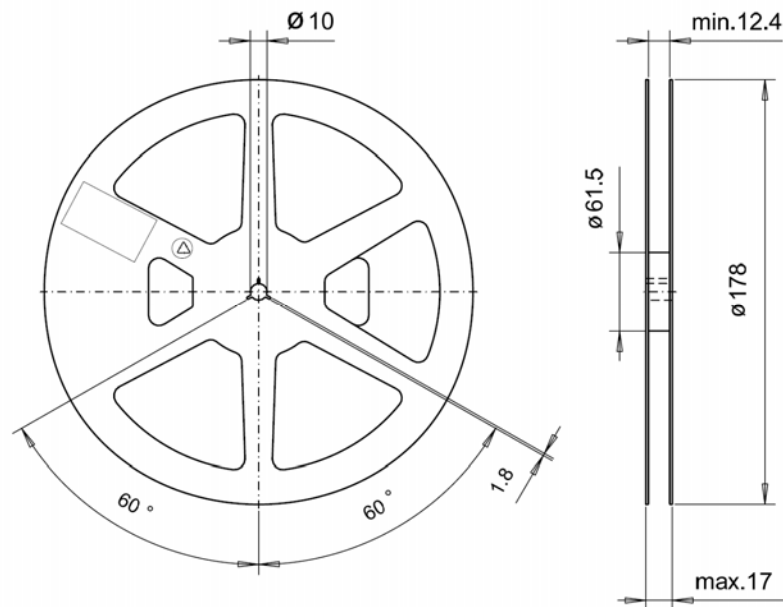
3.7 x 2.5 x 0.9 mm

TAPE & REEL:

T = 1000pcs/reel



User Direction of Feed



Dimension: mm

ATTENTION: Abracon LLC's products are COTS – Commercial-Off-The-Shelf products; suitable for Commercial, Industrial and, where designated, Automotive Applications. Abracon's products are not specifically designed for Military, Aviation, Aerospace, Life-dependant Medical applications or any application requiring high reliability where component failure could result in loss of life and/or property. For applications requiring high reliability and/or presenting an extreme operating environment, written consent and authorization from Abracon LLC is required. Please contact Abracon LLC for more information.

Looking for pricing, stock, or lifecycle information?

Click below to explore more details on WIN SOURCE:

 [View AB-RTCMC-32.768KHZ-B5ZE-S3-T on WIN SOURCE](#)

 [Abracon LLC Information](#)

Optimize Your Supply Chain with WIN SOURCE Solutions

-  Global Sourcing Solution
-  Obsolete Management
-  Cost Control Management
-  Shortage Management
-  Alternative Solution
-  Excess Inventory Management