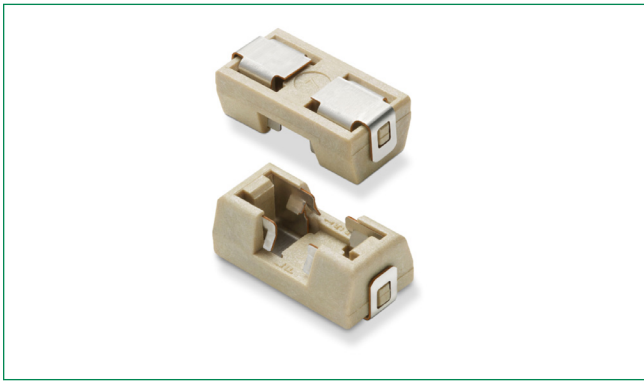




THE DATASHEET OF
01550900DR



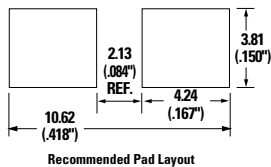
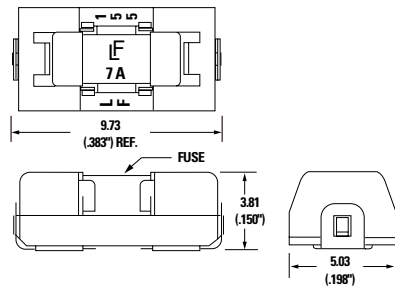
155900 Series OMNI-BLOK® Fuseblock



Agency Approvals

Agency	Agency File Number	Ampere Range
	E14721	10 A

Dimensions in mm (inch)



Description

The RoHS compliant 155 Series OMNI-BLOK® offers a solution for efficient installation and easy replacement of miniature Nano2® surface mount fuses. Offered bulk but also in a tape and reel package, this block can be installed on a PC board as an efficient single step. Fuse replacement can be accomplished without exposing the PC board to the detrimental effects of solder heat.

Features

- Easy fuse replacement
- Miniature size
- RoHS-compliant and Halogen-free
- Very Fast-Acting and Time-Lag options available
- Holder sized to fit a range of [Nano2® type fuses](#)
- Suitable for applications up to 125 V and 10 A
- Wide operating temperature range
- Heat-resistant fuseholder, UL94 V-0
- 260 °C reflow capable fuseholder
- Recognized to UL/CSA/ NMX 4248-1

Additional Information



Datasheet



Resources



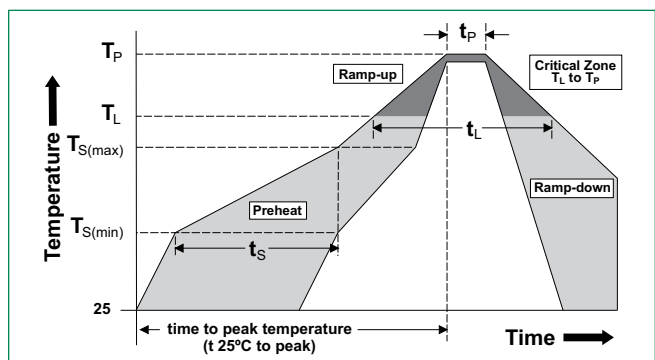
Samples

Packaging

Part Number	Packaging Specification	Quantity	Packaging Option
01550900DR	EIA-481, IEC 60286-3	1500	Tape and Reel
01550900M	EIA-481, IEC 60286-3	1000	Bulk

Soldering Parameters

Reflow Condition		Pb-free assembly
Pre Heat	- Temperature Min ($T_{s(min)}$)	150 °C
	- Temperature Max ($T_{s(max)}$)	200 °C
	- Time (Min to Max) (t_s)	60–180 seconds
Average Ramp-up Rate (Liquidus Temp (T_L) to peak)		5 °C/second max.
$T_{s(max)}$ to T_L - Ramp-up Rate		5 °C/second max.
Reflow	- Temperature (T_L) (Liquidus)	217 °C
	- Temperature (t_L)	60–150 seconds
Peak Temperature (T_p)		260 ^{+0/-5} °C
Time within 5 °C of actual peak Temperature (t_p)		20–40 seconds
Ramp-down Rate		5 °C/second max.
Time 25 °C to peak Temperature (T_p)		8 minutes max.
Do not exceed		260 °C



Product Characteristics

Operating Temperature -55 °C to 125 °C

Disclaimer Notice - Information furnished is believed to be accurate and reliable. However, users should independently evaluate the suitability of and test each product selected for their own applications. Littelfuse products are not designed for, and may not be used in, all applications. Read complete Disclaimer Notice at: www.littelfuse.com/disclaimer-electronics.

Looking for pricing, stock, or lifecycle information?

Click below to explore more details on WIN SOURCE:

 [View 01550900DR on WIN SOURCE](#)

 [Littelfuse Inc. Information](#)

Optimize Your Supply Chain with WIN SOURCE Solutions

-  Global Sourcing Solution
-  Obsolete Management
-  Cost Control Management
-  Shortage Management
-  Alternative Solution
-  Excess Inventory Management