



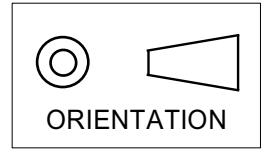
**THE DATASHEET OF**  
**4700-003MLF**



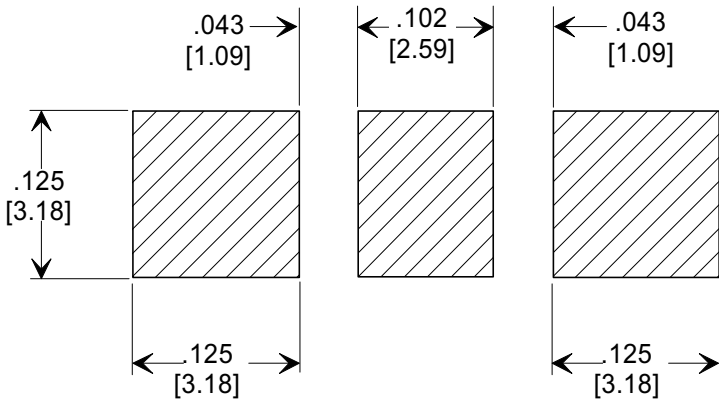
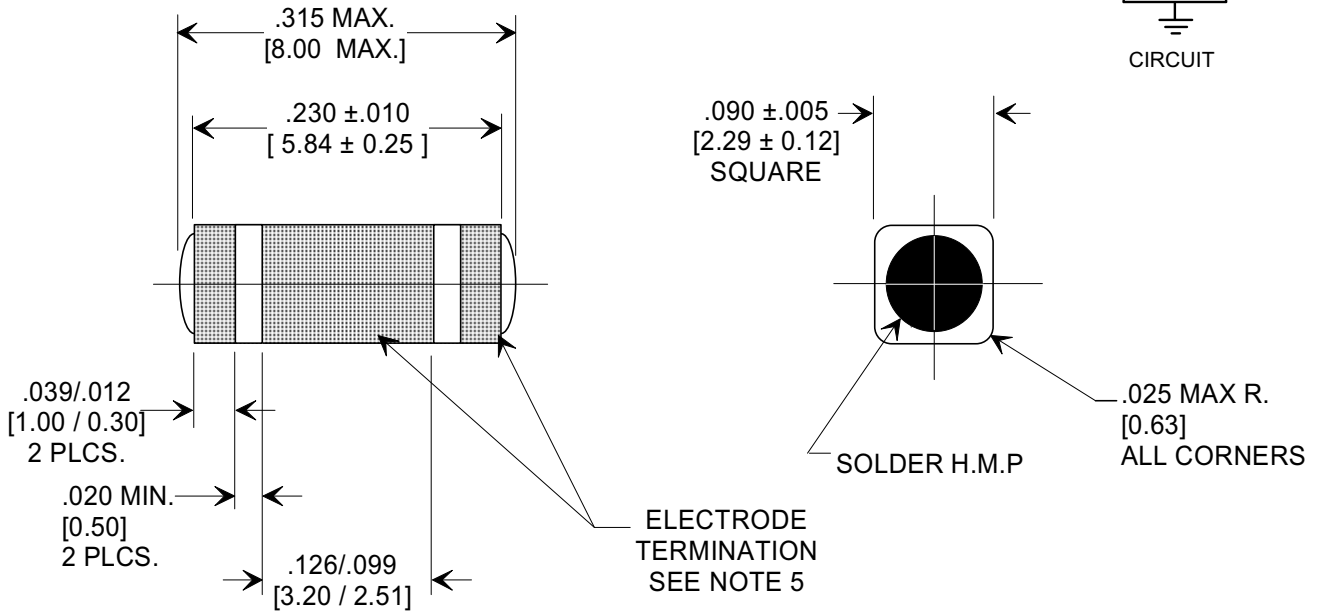
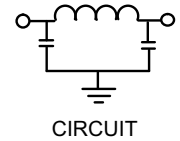
**MARKETING SALES DRAWING**

**DIMENSIONS IN INCHES - DO NOT SCALE THIS DRAWING**  
**DIMENSIONS IN METRIC [ ]**

This drawing is the property of Tusonix, Inc., and may not be used, reproduced, published or disclosed to others without expressed authorization by Tusonix Inc.



**Electrical Testing**  
per Tusonix standard  
test plans and Mil-Std-202  
Test Methods.



**SUGGESTED MOUNTING PATTERN**

1. INDUCTANCE TO BE 0.1 μH MINIMUM.
2. PACKAGE: BLISTER TAPE TO IEC-60286-3 TYPE II AND EIA-481-A. FOR 2,000 PIECE REEL ADD "M" TO THE PART NUMBER FOR 7,000 PIECE REEL ADD "T" TO THE PART NUMBER
3. TUSONIX NON-RoHS PART NUMBER: 4700-003 M OR 4700-003 T . TUSONIX RoHS COMPLIANT PART NUMBER: 4700-003 M LF OR 4700-003 T LF. CUSTOMER MUST SPECIFY STANDARD OR RoHS PART NUMBER WHEN ORDERING.
4. PART MARKING: STANDARD PART: NO MARKING. RoHS PART: LABELED ON PACKAGING ONLY.
5. ELECTRODE TERMINATION: STANDARD 60/40 SOLDER; RoHS COMPLIANT - MATTE TIN.

| CAP.    | TOLERANCE | WVDC |        | TEST VOLTAGE | I.R.MIN. @ 100 (VDC.) | IDC  | TYPICAL NO LOAD INSERTION LOSS dB AT 25°C PER MIL-STD-220 |         |       |
|---------|-----------|------|--------|--------------|-----------------------|------|---|---------|-------|
|         |           | 85°C | +125°C |              |                       |      | 10 MHZ  | 100 MHZ | 1 GHZ |
| 2000 pF | GMV       | 100  | 100    | 300 VDC      | 10 G Ω                | 10 A | 10  | 45      | 70    |

X-2015 Rev-0

|   |   |   |                    |  |
|---|---|---|--------------------|--|
| REVISION RECORD<br>Original Release<br>C.O. <b>941020-1</b><br>ADDED DC COLUMN<br>E.C. 10-26-94<br><b>REISSUE 941020-1 1</b><br>DIM. .230 WAS .238<br>E.C. 11-16-94<br><b>REISSUE 941020-1 2</b><br>REVISED DWG. ORIENTATION<br>SYMBOL & I.R. MIN. @ 100<br>(VDC) ADDED S.M. 02-13-03<br><b>20030213-1-12 3</b><br>REVISED DRAWING.<br>S.M. 06-20-03<br><b>20030619-2-01 4</b><br>ADDED NOTES 3,4 & 5.<br>S.M. 06-10-05<br><b>20050607-5-02 5</b><br>ADDED PROPERTY NOTE.<br>S.M. 03-09-07<br><b>20070301-1-01 6</b><br>NOTES 2,3 REVISED<br>L.E. 10-08-12<br><b>ECO-3124 B</b> | --TOLERANCES--<br>Unless Otherwise Specified<br>DECIMAL ± .005 [0.13]<br>ANGLES ± | Title <b>SURFACE MOUNT SQUARE STYLE PI FILTER</b> |                    |  |
|   |   | Drawn FG 9-9-94<br>Scale 7 X                      | Approved NV 9-9-94 |  |
|   | <b>A</b>  | <b>4700-003</b>                                   |                    |  |
|   | Title <b>SURFACE MOUNT SQUARE STYLE PI FILTER</b>                                 |   |                    |  |
|   | Drawn FG 9-9-94<br>Scale 7 X  |   |                    |  |
|   | Approved NV 9-9-94  |   |                    |  |

## Looking for pricing, stock, or lifecycle information?

Click below to explore more details on WIN SOURCE:

- ⊖ [View 4700-003MLF on WIN SOURCE](#)
- ⊖ [Tusonix a Subsidiary of CTS Electronic Components Information](#)

## Optimize Your Supply Chain with WIN SOURCE Solutions

- ✓ Global Sourcing Solution
- ✓ Obsolete Management
- ✓ Cost Control Management
- ✓ Shortage Management
- ✓ Alternative Solution
- ✓ Excess Inventory Management