



**THE DATASHEET OF
IPD1-12-D-K**



DO NOT SCALE FROM THIS PRINT

NOTES:

1. REPRESENTS A CRITICAL DIMENSION.
2. BURR ALLOWANCE: .0015[.038] MAX.
3. LATCH RETENTION FORCE: 1.000LB[4.45N].
4. POSITION 2 THRU 6 TO BE IN UNIFORM LAYER PACKING, ALL OTHER SIZES TO BE IN TUBES.
5. GATE PADS ARE RECESSED, LOCATION IS AT MOLDERS DISCRETION.
6. NYLON MATERIALS ARE HYGROSCOPIC. PRODUCT MAY EXPAND UP TO 0.5% DEPENDING ON CONDITIONS OF THE SURROUNDING ENVIRONMENT. ALL PRINT DIMENSIONS REPRESENT "DRY AS MOLDED" STATE.
7. POSITIONS -02 THROUGH -05 DO NOT HAVE VOIDS.
8. VOIDING AT VENDOR'S DISCRETION, BUT ANY CHANGES TO VOIDING WILL NEED TO BE APPROVED BY SAMTEC ENGINEERING.

IPD1-XX-X-XX-X

No OF POSITIONS
-02 THRU -25 (PER ROW)

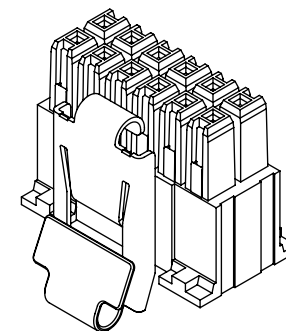
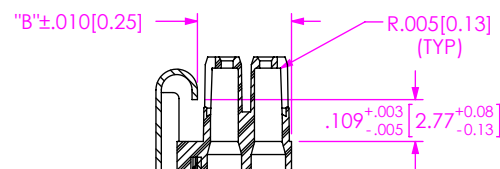
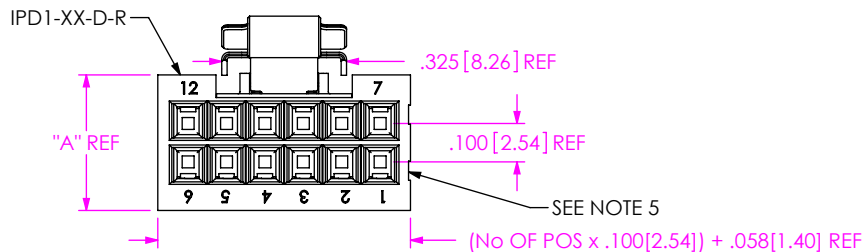
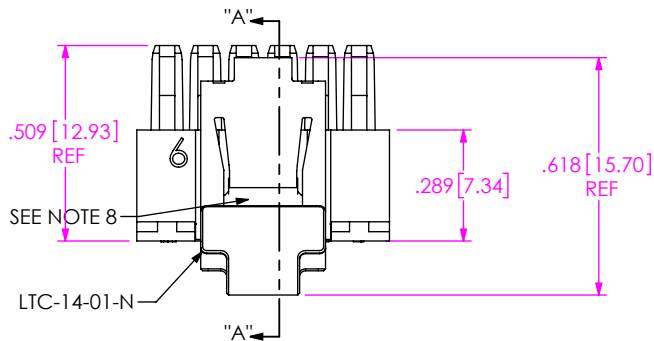
LATCH OPTION
-M: METAL LATCH (SEE FIG 1)
(LEAVE BLANK FOR PLASTIC LATCH, SEE FIG 8 & FIG 10, SHT 2)

ROW SPECIFICATION

-S: SINGLE
-D: DOUBLE

OPTION

- ** -P: POLARIZED (SEE FIG 2)
(NOT AVAILABLE WITH -K, -GP OPTIONS)
(LEAVE BLANK FOR NO POLARIZATION)
 - K: KEYED POLARIZATION (SEE FIG 3)
(NOT AVAILABLE WITH -P, -GP OPTIONS)
 - ** -GP: GUIDE POSTS (SEE FIG 5, SHT 2)
(NOT AVAILABLE WITH -P, -K OPTIONS)
 - ** -H: HORIZONTAL (SEE FIG 7, SHT 2)
- (* = NOT RELEASED FOR PRODUCTION)
(** = -P, -GP & -H OPTION AVAILABLE ON -D ONLY)



ROW SPECS	"A"	"B"	"C"	"D"
-S	.300 [7.62]	.210 [5.33]	.213 [5.41]	.403 [10.24]
-D	.353 [8.97]	.245 [6.22]	.267 [6.77]	.451 [11.46]

FIG 1
(IPD1-06-D-M SHOWN)

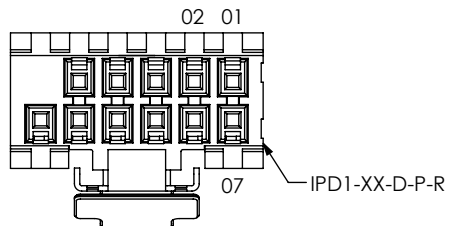


FIG 2
(IPD1-06-D-P-M SHOWN)
(SAME AS FIG 1, UNLESS OTHERWISE STATED)

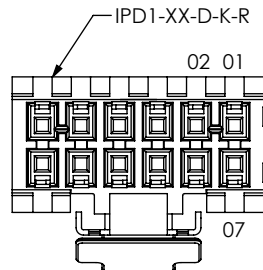


FIG 3
(IPD1-06-D-K-M SHOWN)
(SAME AS FIG 1, UNLESS OTHERWISE STATED)

UNLESS OTHERWISE SPECIFIED, DIMENSIONS ARE IN INCHES.
TOLERANCES ARE:
DECIMALS ANGLES
.XX: ±.01 [.3] 2°
.XXX: ±.005 [.13]
.XXXX: ±.0020 [.051]

PROPRIETARY NOTE
THIS DOCUMENT CONTAINS CONFIDENTIAL AND PROPRIETARY INFORMATION AND ALL DESIGN, MANUFACTURING, REPRODUCTION, USE, PATENT RIGHTS AND SALES RIGHTS ARE EXPRESSLY RESERVED BY SAMTEC, INC. THIS DOCUMENT SHALL NOT BE DISCLOSED, IN WHOLE OR PART, TO ANY UNAUTHORIZED PERSON OR ENTITY NOR REPRODUCED, TRANSFERRED OR INCORPORATED IN ANY OTHER PROJECT IN ANY MANNER WITHOUT THE EXPRESS WRITTEN CONSENT OF SAMTEC, INC.

MATERIAL: DO NOT SCALE DRAWING SHEET SCALE: 2:1

ROW SPECIFICATION -S INSULATOR: NYLON, UL 94 V2
ROW SPECIFICATION -D INSULATOR: NYLON, UL 94 V0
LATCH: NICKEL-PLATED BeCu, #25, 1/2 HT

F:\DWG\MISC\MKTG\IPD1-XX-X-XX-X-MKT.SLDDRW



520 PARK EAST BLVD, NEW ALBANY, IN 47150
PHONE: 812-944-6733 FAX: 812-948-5047
e-Mail info@SAMTEC.com code 55322

DESCRIPTION:
.100[2.54] DISCRETE WIRE INSULATOR & LATCH ASM

DWG. NO. IPD1-XX-X-XX-X

BY: T NEWTON 03/12/2008 SHEET 1 OF 3

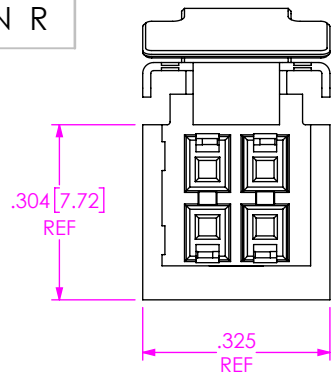


FIG 4
(IPD1-02-D-M SHOWN)
(SAME AS FIG 1, UNLESS OTHERWISE STATED)

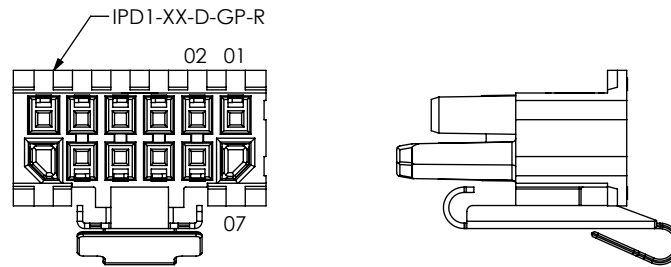


FIG 5
(IPD1-06-D-GP-M SHOWN)
(SAME AS FIG 1, UNLESS OTHERWISE STATED)

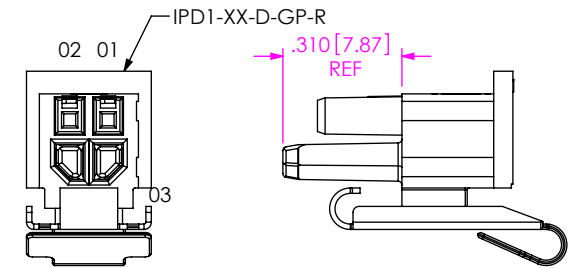


FIG 6
(IPD1-02-D-GP-M SHOWN)
(SAME AS FIG 4, UNLESS OTHERWISE STATED)

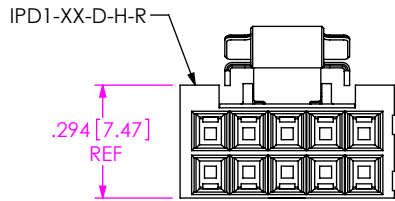


FIG 7
(IPD1-05-D-H-M SHOWN)
(SAME AS FIG 1, UNLESS OTHERWISE STATED)

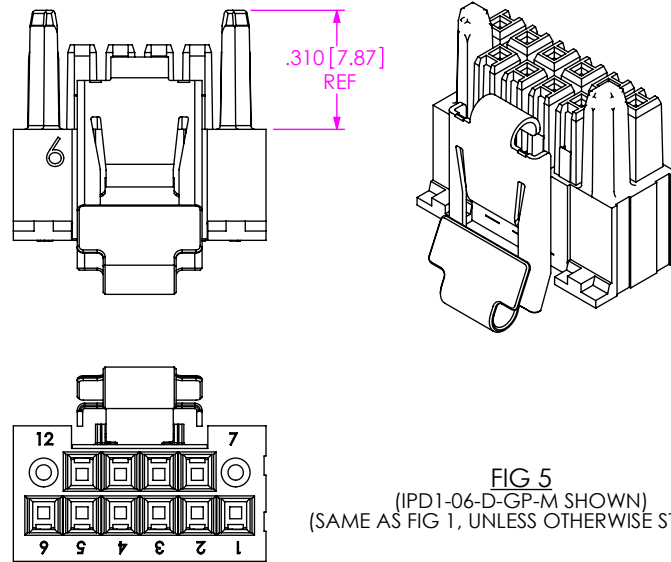


FIG 8
(IPD1-06-D-K SHOWN)
(SAME AS FIG 1, UNLESS OTHERWISE STATED)

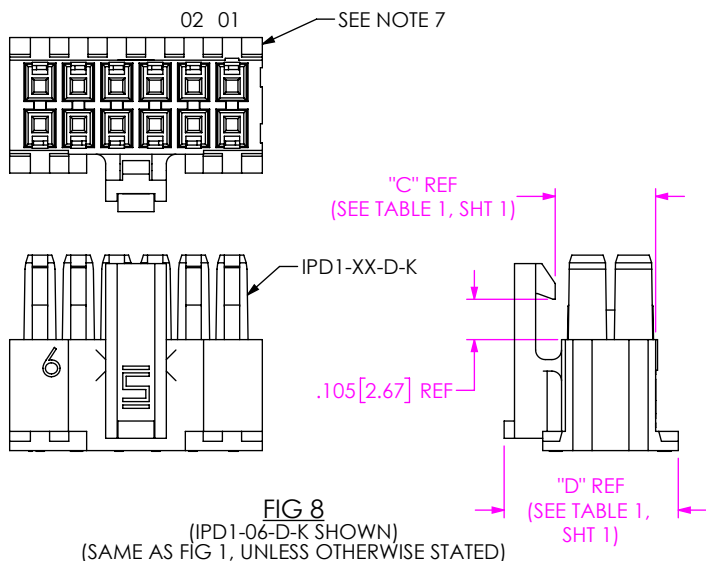


FIG 9
(IPD1-06-S-K-M SHOWN)
(SAME AS FIG 1, UNLESS OTHERWISE STATED)

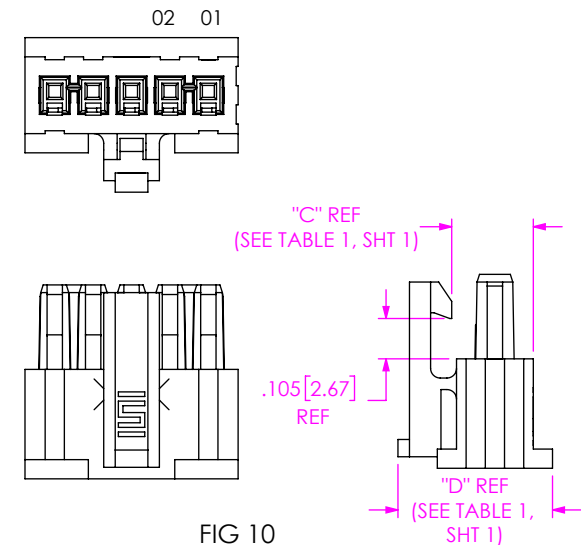


FIG 10
(IPD1-05-S-K SHOWN)
(SAME AS FIG 1, UNLESS OTHERWISE STATED)

PROPRIETARY NOTE

THIS DOCUMENT CONTAINS CONFIDENTIAL AND PROPRIETARY INFORMATION AND ALL DESIGN, MANUFACTURING, REPRODUCTION, USE, PATENT RIGHTS AND SALES RIGHTS ARE EXPRESSLY RESERVED BY SAMTEC, INC. THIS DOCUMENT SHALL NOT BE DISCLOSED, IN WHOLE OR PART, TO ANY UNAUTHORIZED PERSON OR ENTITY NOR REPRODUCED, TRANSFERRED OR INCORPORATED IN ANY OTHER PROJECT IN ANY MANNER WITHOUT THE EXPRESS WRITTEN CONSENT OF SAMTEC, INC.

DO NOT SCALE DRAWING

SHEET SCALE: 2:1



520 PARK EAST BLVD, NEW ALBANY, IN 47150
PHONE: 812-944-6733 FAX: 812-948-5047
e-Mail: info@SAMTEC.com code 55322

DESCRIPTION:
.100[2.54] DISCRETE WIRE INSULATOR & LATCH ASM

DWG. NO. **IPD1-XX-X-XX-X**

BY: T NEWTON 03/12/2008 SHEET 2 OF 3

TABLE 2	
No OF POS	"E"
-02	.325 [8.26]
-03	.425 [10.80]

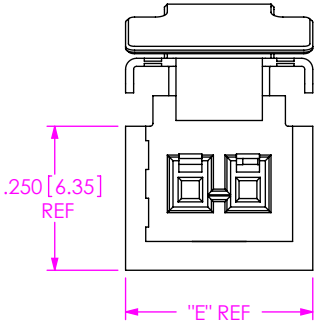
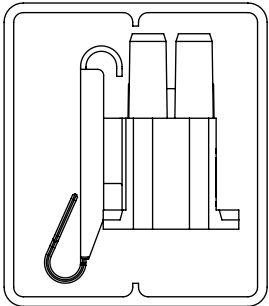
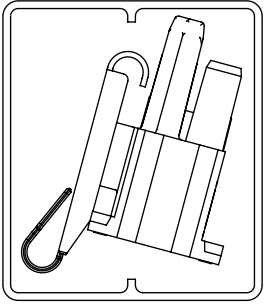


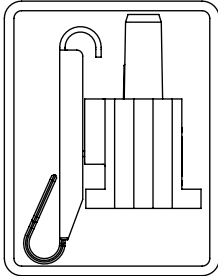
FIG 11
(IPD1-02-S-K-M SHOWN)
(SAME AS FIG 1, UNLESS OTHERWISE STATED)



-D ROW
TUBE: PT-1-24-04-56
PLUG: TP-25



-D-GP
TUBE: PT-1-24-04-56
PLUG: TP-25



-S ROW
TUBE: PT-1-24-02-112
PLUG: TP-28

PACKAGING VIEW
(SEE NOTE 4)

PROPRIETARY NOTE
THIS DOCUMENT CONTAINS CONFIDENTIAL AND PROPRIETARY INFORMATION AND ALL DESIGN, MANUFACTURING, REPRODUCTION, USE, PATENT RIGHTS AND SALES RIGHTS ARE EXPRESSLY RESERVED BY SAMTEC, INC. THIS DOCUMENT SHALL NOT BE DISCLOSED, IN WHOLE OR PART, TO ANY UNAUTHORIZED PERSON OR ENTITY NOR REPRODUCED, TRANSFERRED OR INCORPORATED IN ANY OTHER PROJECT IN ANY MANNER WITHOUT THE EXPRESS WRITTEN CONSENT OF SAMTEC, INC.

DO NOT SCALE DRAWING

SHEET SCALE: 2.5:1



520 PARK EAST BLVD, NEW ALBANY, IN 47150
PHONE: 812-944-6733 FAX: 812-948-5047
e-Mail info@SAMTEC.com code 55322

DESCRIPTION:
.100[2.54] DISCRETE WIRE INSULATOR & LATCH ASM

DWG. NO. IPD1-XX-X-XX-X

BY: T NEWTON 03/12/2008 SHEET 3 OF 3

Looking for pricing, stock, or lifecycle information?

Click below to explore more details on WIN SOURCE:

 [View IPD1-12-D-K on WIN SOURCE](#)

 [Samtec Inc. Information](#)

Optimize Your Supply Chain with WIN SOURCE Solutions

-  Global Sourcing Solution
-  Obsolete Management
-  Cost Control Management
-  Shortage Management
-  Alternative Solution
-  Excess Inventory Management