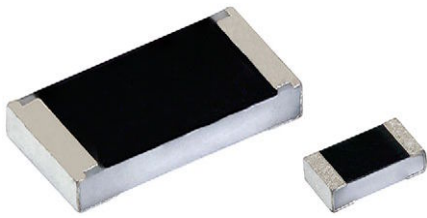




**THE DATASHEET OF
CRCW0603470MJPEAHR**



High Resistance Value Thick Film Chip Resistors



RoHS
COMPLIANT
HALOGEN
FREE

FEATURES

- High resistance values (up to 470 M Ω)
- Pure tin plating provides compatibility with lead (Pb)-free and lead containing soldering processing
- Material categorization: for definitions of compliance please see www.vishay.com/doc?99912

LINKS TO ADDITIONAL RESOURCES



The D/CRCW-HR chip resistor series is the perfect choice for applications which require high resistance value components. Typical applications include voltage dividers and hybrids.

APPLICATIONS

- Voltage dividers
- Hybrids

TECHNICAL SPECIFICATIONS			
DESCRIPTION	D11/CRCW0603-HR e3	D12/CRCW0805-HR e3	D25/CRCW1206-HR e3
Imperial size	0603	0805	1206
Metric size code	RR1608M	RR2012M	RR3216M
Resistance range	11 M Ω to 470 M Ω		
Resistance tolerance	$\pm 5\%$		
Temperature coefficient	± 500 ppm/K		
Rated dissipation, P_{70} ⁽¹⁾	0.1 W	0.125 W	0.25 W
Operating voltage, U_{max} AC _{RMS} /DC	75 V	150 V	200 V
Voltage coefficient ⁽²⁾	< 100M: < -0.1 ppm/V > 100M: < -0.3 ppm/V		
Permissible film temperature, $\vartheta_{F max}$ ⁽¹⁾	155 °C		
Operating temperature range	-55 °C to +155 °C		
Max. resistance change at P_{70} for resistance range, $ \Delta R/R $ after:			
1000 h	$\leq 2\%$		
8000 h	$\leq 4\%$		
Permissible voltage against ambient (insulation): 1 min, U_{ins}	100 V	200 V	300 V
Failure rate: FIT _{observed}	$\leq 0.1 \times 10^{-9}/h$		

Notes

⁽¹⁾ Please refer to APPLICATION INFORMATION below

⁽²⁾ Voltage coefficient was tested according to 10 V measurements

APPLICATION INFORMATION

When the resistor dissipates power, a temperature rise above the ambient temperature occurs, dependent on the thermal resistance of the assembled resistor together with the printed circuit board. The rated dissipation applies only if the permitted film temperature is not exceeded.

These resistors do not feature a limited lifetime when operated within the permissible limits. However, resistance value drift increasing over operating time may result in exceeding a limit acceptable to the specific application, thereby establishing a functional lifetime.



TEMPERATURE COEFFICIENT AND RESISTANCE RANGE				
TYPE / SIZE	TCR	TOLERANCE	RESISTANCE	E-SERIES
D11/CRCW0603-HR e3	± 500 ppm/K	± 5	11 MΩ to 470 MΩ	E24
D12/CRCW0805-HR e3	± 500 ppm/K	± 5	11 MΩ to 470 MΩ	E24
D25/CRCW1206-HR e3	± 500 ppm/K	± 5	11 MΩ to 470 MΩ	E24

PACKAGING						
TYPE / SIZE	CODE	QUANTITY	PACKAGING STYLE	WIDTH	PITCH	PACKAGING DIMENSIONS
D11/CRCW0603-HR e3	EA = ET1	5000	Paper tape according to IEC 60286-3, Type 1a	8 mm	4 mm	180 mm / 7"
	EC = ET6	20 000				330 mm / 13"
D12/CRCW0805-HR e3	EA = ET1	5000		8 mm	4 mm	180 mm / 7"
	EC = ET6	20 000				330 mm / 13"
D25/CRCW1206-HR e3	EA = ET1	5000		8 mm	4 mm	180 mm / 7"
	EC = ET6	20 000				330 mm / 13"

PART NUMBER AND PRODUCT DESCRIPTION

Part Number: CRCW060316M0JPEAHR

C	R	C	W	0	6	0	3	1	6	M	0	J	P	E	A	H	R
---	---	---	---	---	---	---	---	---	---	---	---	---	---	---	---	---	---

MODEL / SIZE CRCW0603 CRCW0805 CRCW1206	RESISTANCE M = million	TOLERANCE J = ± 5 %	TCR P = ± 500 ppm/K	PACKAGING EA, EC	SPECIAL Up to 2 digits HR = high value
--	---------------------------	------------------------	------------------------	---------------------	--

Product Description: D11/CRCW0603-HR 500 16M 5 % ET1 e3

D11/CRCW0603-HR	500	16M	5 %	ET1	e3
MODEL D11/CRCW0603-HR D12/CRCW0805-HR D25/CRCW1206-HR	TCR ± 500 ppm/K	RESISTANCE 68M = 68 MΩ 227M = 227 MΩ	TOLERANCE ± 5 %	PACKAGING ET1, ET6	LEAD (Pb)-FREE e3 = pure tin termination finish



DESCRIPTION

Production is strictly controlled and follows an extensive set of instructions established for reproducibility. A cermet film layer and a glass-over are deposited on a high grade (Al_2O_3) ceramic substrate with its prepared inner contacts. A special laser is used to achieve the target value by smoothly fine trimming the resistive layer without damaging the ceramics. The resistor elements are covered by a protective coating designed for electrical, mechanical and climatic protection. The terminations receive a final pure tin on nickel plating.

The result of the determined production is verified by an extensive testing procedure on 100 % of the individual chip resistors. Only accepted products are laid directly into the tape in accordance with **IEC 60286-3 Type 1a** ⁽¹⁾.

ASSEMBLY

The resistors are suitable for processing on automatic SMD assembly systems. They are suitable for automatic soldering using wave, reflow or vapor phase as shown in **IEC 61760-1** ⁽¹⁾. The encapsulation is resistant to all cleaning solvents commonly used in the electronics industry, including alcohols, esters and aqueous solutions. The suitability of conformal coatings, potting compounds and their processes, if applied, shall be qualified by appropriate means to ensure the long-term stability of the whole system.

The resistors are RoHS-compliant, the pure tin plating provides compatibility with lead (Pb)-free and lead-containing soldering processes. Solderability is specified for 2 years after production or requalification. The permitted storage time is 20 years. The immunity of the plating against tin whisker growth has been proven under extensive testing.

MATERIALS

Vishay acknowledges the following systems for the regulation of hazardous substances:

- IEC 62474, Material Declaration for Products of and for the Electrotechnical Industry, with the list of declarable substances given therein ⁽²⁾
- The Global Automotive Declarable Substance List (GADSL) ⁽³⁾
- The REACH regulation (1907/2006/EC) and the related list of substances with very high concern (SVHC) ⁽⁴⁾ for its supply chain

Notes

- ⁽¹⁾ The quoted IEC standards are also released as EN standards with the same number and identical contents
- ⁽²⁾ The IEC 62474 list of declarable substances is maintained in a dedicated database, which is available at <http://std.iec.ch/iec62474>
- ⁽³⁾ The Global Automotive Declarable Substance List (GADSL) is maintained by the American Chemistry Council and available at www.gadsl.org
- ⁽⁴⁾ The SVHC list is maintained by the European Chemical Agency (ECHA) and available at <http://echa.europa.eu/candidate-list-table>

The products do not contain any of the banned substances as per IEC 62474, GADSL, or the SVHC list, see www.vishay.com/how/leadfree.

Hence the products fully comply with the following directives:

- 2000/53/EC End-of-Life Vehicle Directive (ELV) and Annex II (ELV II)
- 2011/65/EU Restriction of the Use of Hazardous Substances Directive (RoHS) with amendment 2015/863/EU
- 2012/19/EU Waste Electrical and Electronic Equipment Directive (WEEE)

Vishay pursues the elimination of conflict minerals from its supply chain, see the Conflict Minerals Policy at www.vishay.com/doc?49037.

APPROVALS

Where applicable, the resistors are tested in accordance with **EN 140401-802** which refers to **EN 60115-1**, **EN 60115-8** and the variety of environmental test procedures of the **IEC 60068** ⁽¹⁾ series.

RELATED PRODUCTS

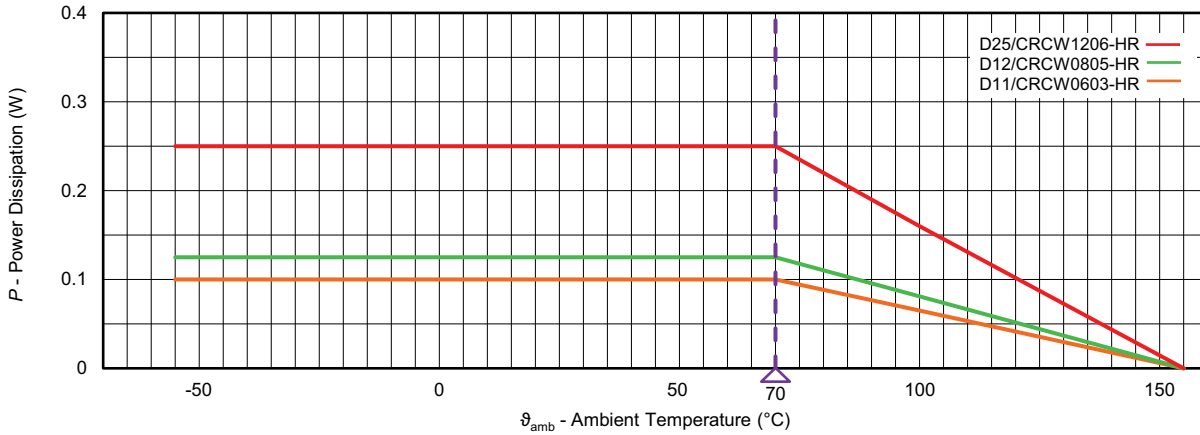
For more information about high voltage products, please refer to RCV e3 datasheet "High Voltage (Up to 2 kV) Thick Film Chip Resistors" (www.vishay.com/doc?20054).

The D/CRCW-HR with SnPb termination plating is designed for applications where lead bearing terminations are mandatory. For ordering D/CRCW-HR with SnPb terminations please refer to latest edition of datasheet D/CRCW-HR (www.vishay.com/doc?20011).



FUNCTIONAL PERFORMANCE

Derating



TESTS AND REQUIREMENTS

All executed tests are carried out in accordance with the following specifications:

- EN 60115-1, generic specification
- EN 60115-8, sectional specification
- EN 140401-802, detail specification
- IEC 60068-2-xx, test methods

The parameters stated in the Test Procedures and Requirements table are based on the required tests and permitted limits of EN 140401-802. The table presents only the most important tests, for the full test schedule refer to the documents listed above. However, some additional tests and a number of improvements against those minimum requirements have been included.

The testing also covers most of the requirements specified by EIA/IS-703 and JIS-C-5201-1.

The tests are carried out under standard atmospheric conditions in accordance with IEC 60068-1, 4.3, whereupon the following values are applied:

Temperature: 15 °C to 35 °C

Relative humidity: 25 % to 75 %

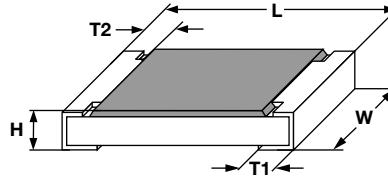
Air pressure: 86 kPa to 106 kPa (860 mbar to 1060 mbar).

A climatic category LCT / UCT / 56 is applied, defined by the lower category temperature (LCT), the upper category temperature (UCT), and the duration of exposure in the damp heat, steady state test (56 days). The components are mounted for testing on boards in accordance with EN 60115-8, 2.4.2 unless otherwise specified.

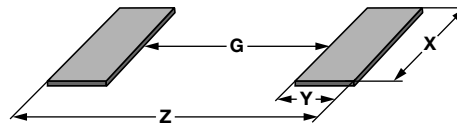
TEST PROCEDURES AND REQUIREMENTS				
EN 60115-1 CLAUSE	IEC 60068-2 ⁽¹⁾ TEST METHOD	TEST	PROCEDURE	REQUIREMENTS PERMISSIBLE CHANGE (ΔR)
			Stability for product types:	STABILITY CLASS 2 OR BETTER
			D/CRCW-HR e3	11 M Ω to 470 M Ω
4.5	-	Resistance	-	$\pm 5\%$
4.8	-	Temperature coefficient	At (20 / -55 / 20) °C and (20 / 125 / 20) °C	± 500 ppm/K
4.25.1	-	Endurance at 70 °C	$U = \sqrt{P_{70}} \times R \leq U_{max.}$; 1.5 h on; 0.5 h off; 70 °C; 1000 h 70 °C; 8000 h	$\pm (2\% R + 0.1 \Omega)$ $\pm (4\% R + 0.1 \Omega)$
4.25.3	-	Endurance at upper category temperature	155 °C; 1000 h	$\pm (2\% R + 0.1 \Omega)$
4.24	78 (Cab)	Damp heat, steady state	(40 \pm 2) °C; (93 \pm 3) % RH; 56 days	$\pm (2\% R + 0.1 \Omega)$
4.23	-	Climatic sequence:	-	$\pm (2\% R + 0.1 \Omega)$
4.23.2	2 (Ba)	Dry heat	125 °C; 16 h	
4.23.3	30 (Db)	Damp heat, cyclic	55 °C; 24 h; $\geq 90\%$ RH; 1 cycle	
4.23.4	1 (Ab)	Cold	-55 °C; 2 h	
4.23.5	13 (M)	Low air pressure	8.5 kPa; 2 h; (25 \pm 10) °C	
4.23.6	30 (Db)	Damp heat, cyclic	55 °C; 5 days; > 90 % RH; 5 cycles	
4.23.7	-	DC load	$U = \sqrt{P_{70}} \times R \leq U_{max.}$; 1 min	
4.19	14 (Na)	Rapid change of temperature	30 min. at -55 °C and 30 min. at 125 °C; 1000 cycles	$\pm (1\% R + 0.05 \Omega)$
4.13	-	Short time overload	$U = 2.5 \times \sqrt{P_{70}} \times R \leq 2 \times U_{max.}$; whichever is the less severe; 5 s	$\pm (2\% R + 0.05 \Omega)$
4.17	58 (Td)	Solderability	Solder bath method, Sn60Pb40 non-activated flux; (235 \pm 5) °C; (2 \pm 0.2) s	Good tinning ($\geq 95\%$ covered); no visible damage
			Solder bath method; Sn96.5Ag3Cu0.5 or Sn99.3Cu0.7 non-activated flux; (245 \pm 5) °C or (250 \pm 5) °C (3 \pm 0.3) s	
4.18	58 (Td)	Resistance to soldering heat	Solder bath method (260 \pm 5) °C; (10 \pm 1) s	$\pm (0.5\% R + 0.05 \Omega)$
4.29	45 (XA)	Component solvent resistance	Isopropyl alcohol; 50 °C; method 2	No visible damage
4.32	21 (Uu ₃)	Shear (adhesion)	D11/CRCW0603-HR: 9 D12/CRCW0805-HR and D25/CRCW1206-HR: 45 N	No visible damage
4.33	21 (Uu ₁)	Substrate bending	Depth 2 mm; 3 times	No visible damage, no open circuit in bent position $\pm (0.25\% R + 0.05 \Omega)$

Note

⁽¹⁾ The quoted IEC standards are also released as EN standards with the same number and identical contents

DIMENSIONS


DIMENSIONS AND MASS						
TYPE / SIZE	L (mm)	W (mm)	H (mm)	T1 (mm)	T2 (mm)	MASS (mg)
D11/CRCW0603-HR e3	1.55 + 0.10 / - 0.05	0.85 ± 0.1	0.45 ± 0.05	0.3 ± 0.20	0.3 ± 0.20	2
D12/CRCW0805-HR e3	2.0 + 0.20 / - 0.10	1.25 ± 0.15	0.5 ± 0.10	0.3 + 0.20 / - 0.10	0.3 ± 0.20	5.5
D25/CRCW1206-HR e3	3.2 + 0.10 / - 0.20	1.6 ± 0.15	0.55 ± 0.05	0.45 ± 0.20	0.4 ± 0.20	10

SOLDER PAD DIMENSIONS


RECOMMENDED SOLDER PAD DIMENSIONS								
TYPE / SIZE	WAVE SOLDERING				REFLOW SOLDERING			
	G (mm)	Y (mm)	X (mm)	Z (mm)	G (mm)	Y (mm)	X (mm)	Z (mm)
D11/CRCW0603-HR e3	0.65	1.10	1.25	2.85	0.75	0.75	1.00	2.25
D12/CRCW0805-HR e3	0.90	1.30	1.60	3.50	1.00	0.95	1.45	2.90
D25/CRCW1206-HR e3	1.40	1.40	1.95	4.20	1.50	1.05	1.80	3.60

Note

- The rated dissipation applies only if the permitted film temperature is not exceeded. Furthermore, a high level of ambient temperature or of power dissipation may raise the temperature of the solder joint, hence special solder alloys or board materials may be required to maintain the reliability of the assembly.
The given solder pad dimensions reflect the considerations for board design and assembly as outlined e.g. in standards IEC 61188-5-x or in publication IPC-7351. They do not guarantee any supposed thermal properties, particularly as these are also strongly influenced by many other parameters. Still, the given solder pad dimensions will be found adequate for most general applications



Disclaimer

ALL PRODUCT, PRODUCT SPECIFICATIONS AND DATA ARE SUBJECT TO CHANGE WITHOUT NOTICE TO IMPROVE RELIABILITY, FUNCTION OR DESIGN OR OTHERWISE.

Vishay Intertechnology, Inc., its affiliates, agents, and employees, and all persons acting on its or their behalf (collectively, "Vishay"), disclaim any and all liability for any errors, inaccuracies or incompleteness contained in any datasheet or in any other disclosure relating to any product.

Vishay makes no warranty, representation or guarantee regarding the suitability of the products for any particular purpose or the continuing production of any product. To the maximum extent permitted by applicable law, Vishay disclaims (i) any and all liability arising out of the application or use of any product, (ii) any and all liability, including without limitation special, consequential or incidental damages, and (iii) any and all implied warranties, including warranties of fitness for particular purpose, non-infringement and merchantability.

Statements regarding the suitability of products for certain types of applications are based on Vishay's knowledge of typical requirements that are often placed on Vishay products in generic applications. Such statements are not binding statements about the suitability of products for a particular application. It is the customer's responsibility to validate that a particular product with the properties described in the product specification is suitable for use in a particular application. Parameters provided in datasheets and / or specifications may vary in different applications and performance may vary over time. All operating parameters, including typical parameters, must be validated for each customer application by the customer's technical experts. Product specifications do not expand or otherwise modify Vishay's terms and conditions of purchase, including but not limited to the warranty expressed therein.

Hyperlinks included in this datasheet may direct users to third-party websites. These links are provided as a convenience and for informational purposes only. Inclusion of these hyperlinks does not constitute an endorsement or an approval by Vishay of any of the products, services or opinions of the corporation, organization or individual associated with the third-party website. Vishay disclaims any and all liability and bears no responsibility for the accuracy, legality or content of the third-party website or for that of subsequent links.

Vishay products are not designed for use in life-saving or life-sustaining applications or any application in which the failure of the Vishay product could result in personal injury or death unless specifically qualified in writing by Vishay. Customers using or selling Vishay products not expressly indicated for use in such applications do so at their own risk. Please contact authorized Vishay personnel to obtain written terms and conditions regarding products designed for such applications.

No license, express or implied, by estoppel or otherwise, to any intellectual property rights is granted by this document or by any conduct of Vishay. Product names and markings noted herein may be trademarks of their respective owners.

Looking for pricing, stock, or lifecycle information?

Click below to explore more details on WIN SOURCE:

 [View CRCW0603470MJPEAHR on WIN SOURCE](#)

 [Vishay Information](#)

Optimize Your Supply Chain with WIN SOURCE Solutions

-  Global Sourcing Solution
-  Obsolete Management
-  Cost Control Management
-  Shortage Management
-  Alternative Solution
-  Excess Inventory Management