



# Ceramic Chip Antenna 2450 MHz



ACAG0301-2450-T

Request Samples



Check Inventory



**3.2 x 1.6 x 1.2 mm**  
**RoHS/RoHS II Compliant**  
MSL Level = N/A

## Description & Key Electrical

The ACAG0301-2450-T is a high gain, multi-layer Ceramic Chip Antenna designed for 2450 MHz for Wi-Fi, Bluetooth, ZigBee and ISM applications. These antennas are made using Low Temperature Co-Fired Ceramic (LTCC) technology.

## Electrical Characteristics

Parameter	Specification	Unit
Operating Frequency	2400 - 2500	MHz
Return Loss	< -10.9	dB
Polarization	Linear	-
Peak Gain	2.7	dBi
Efficiency	> -2.5 (56)	dB (%)
Impedance	50	$\Omega$

## Environmental Characteristics

Parameter	Specification
Operating Temperature	-40 °C to + 85 °C
Relative Humidity	55 ~ 75 %

# Ceramic Chip Antenna 2450 MHz



ACAG0301-2450-T

Request Samples

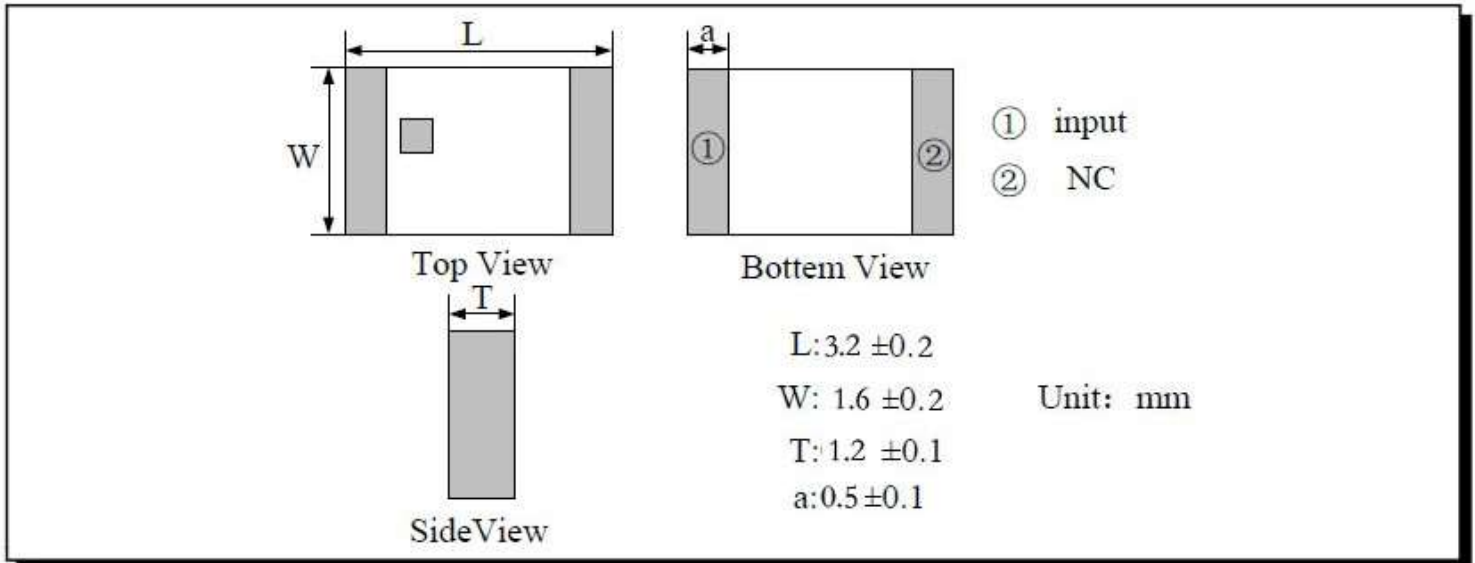


Check Inventory

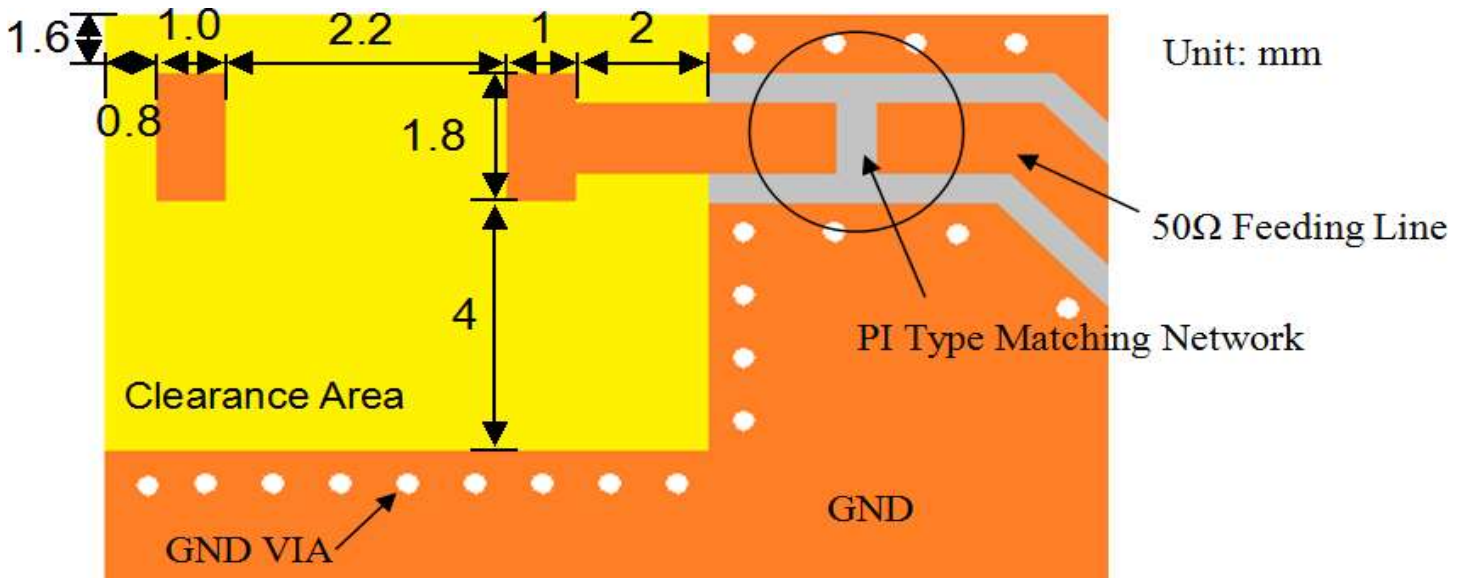


3.2 x 1.6 x 1.2 mm  
RoHS/RoHS II Compliant  
MSL Level = N/A

## Product Dimensions



## Evaluation Board and Matching



# Ceramic Chip Antenna 2450 MHz



ACAG0301-2450-T

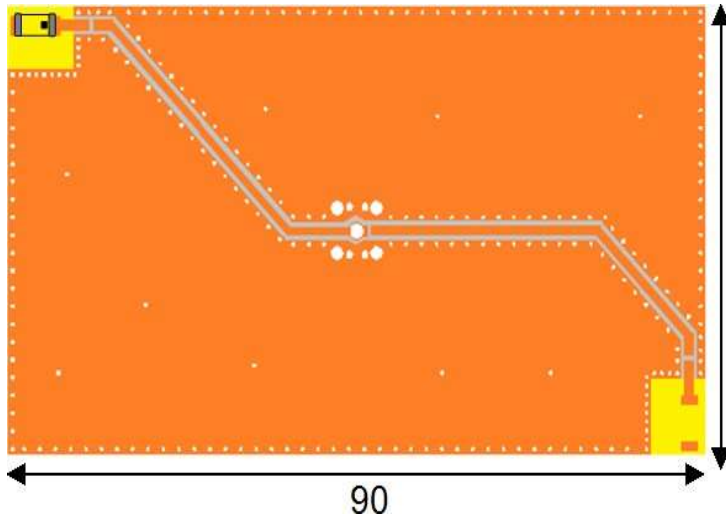
Request Samples



Check Inventory



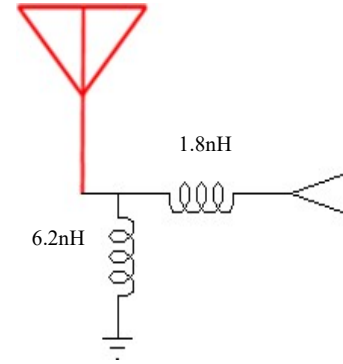
**3.2 x 1.6 x 1.2 mm**  
**RoHS/RoHS II Compliant**  
MSL Level = N/A



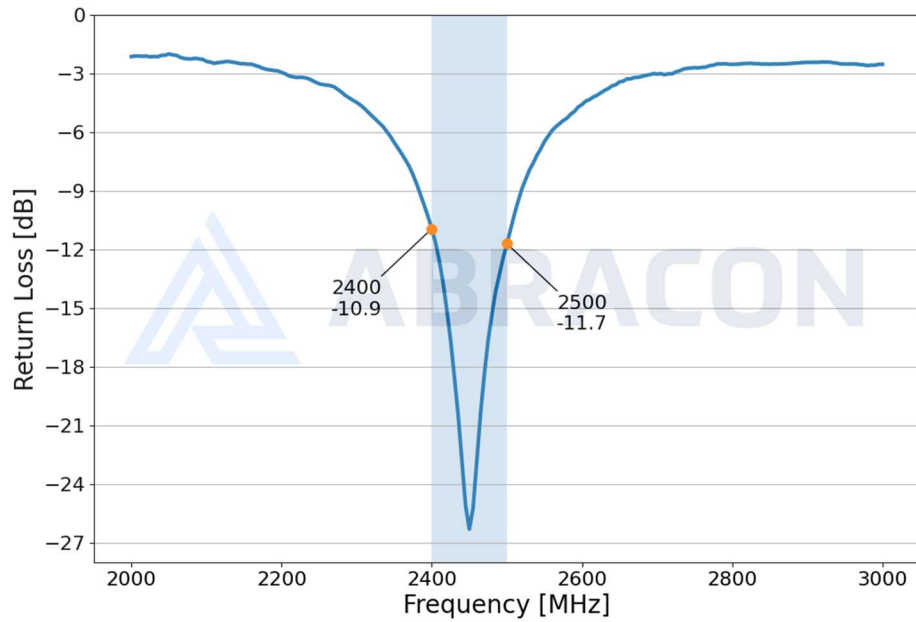
Unit: mm

50

90



## Return Loss



# Ceramic Chip Antenna 2450 MHz



ACAG0301-2450-T

Request Samples

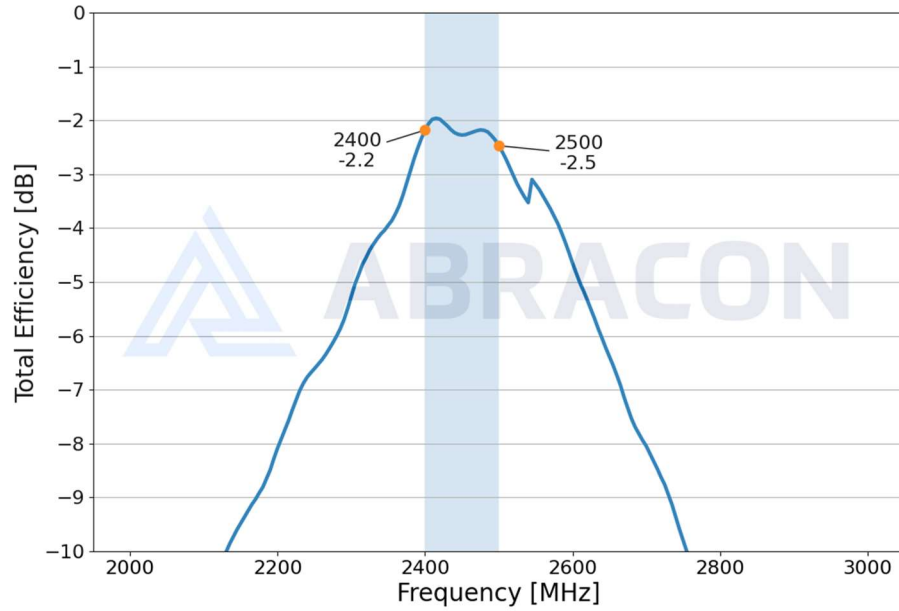


Check Inventory

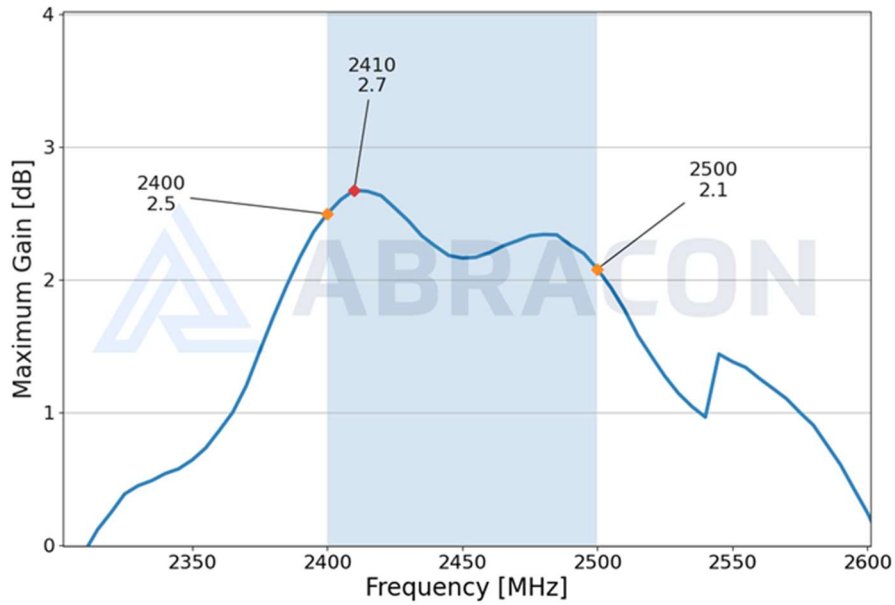


3.2 x 1.6 x 1.2 mm  
RoHS/RoHS II Compliant  
MSL Level = N/A

## Efficiency



## Maximum Gain



5101 Hidden Creek Ln Spicewood TX 78669  
Phone: 512-371-6159 | Fax: 512-351-8858  
For terms and conditions of sales, please visit:  
[www.abracon.com](http://www.abracon.com)

REVISED: 11-28-23

ABRACON IS  
ISO9001-2015  
CERTIFIED

# Ceramic Chip Antenna 2450 MHz



ACAG0301-2450-T

Request Samples



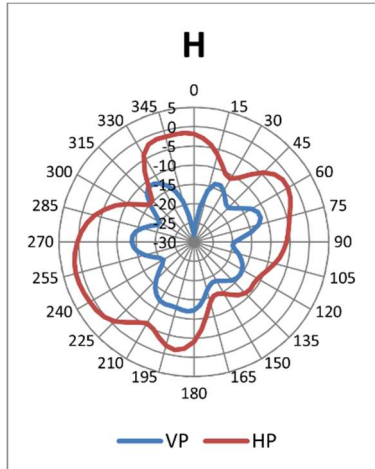
Check Inventory



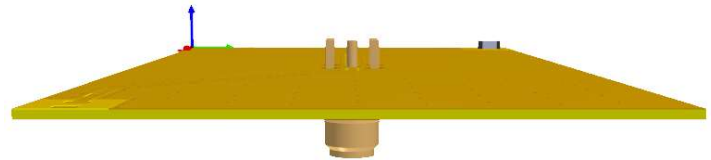
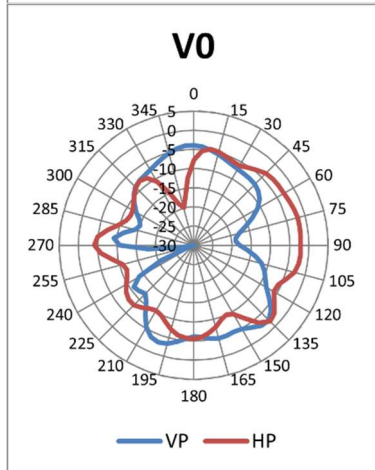
3.2 x 1.6 x 1.2 mm  
RoHS/RoHS II Compliant  
MSL Level = N/A

## Radiation Characteristics – 2D Pattern @ 2450 MHz

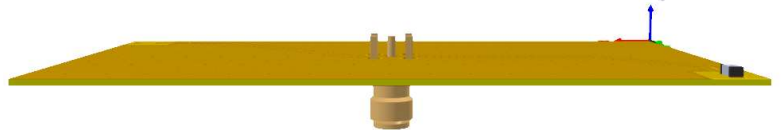
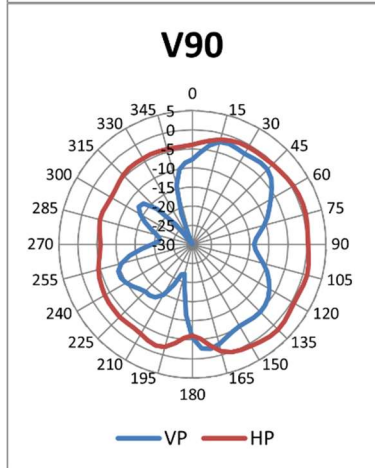
XY-plane:



YZ-plane:



XZ-plane:



VP: Vertical Polarization  
HP: Horizontal Polarization

Unit: dBi

# Ceramic Chip Antenna 2450 MHz



ACAG0301-2450-T

Request Samples

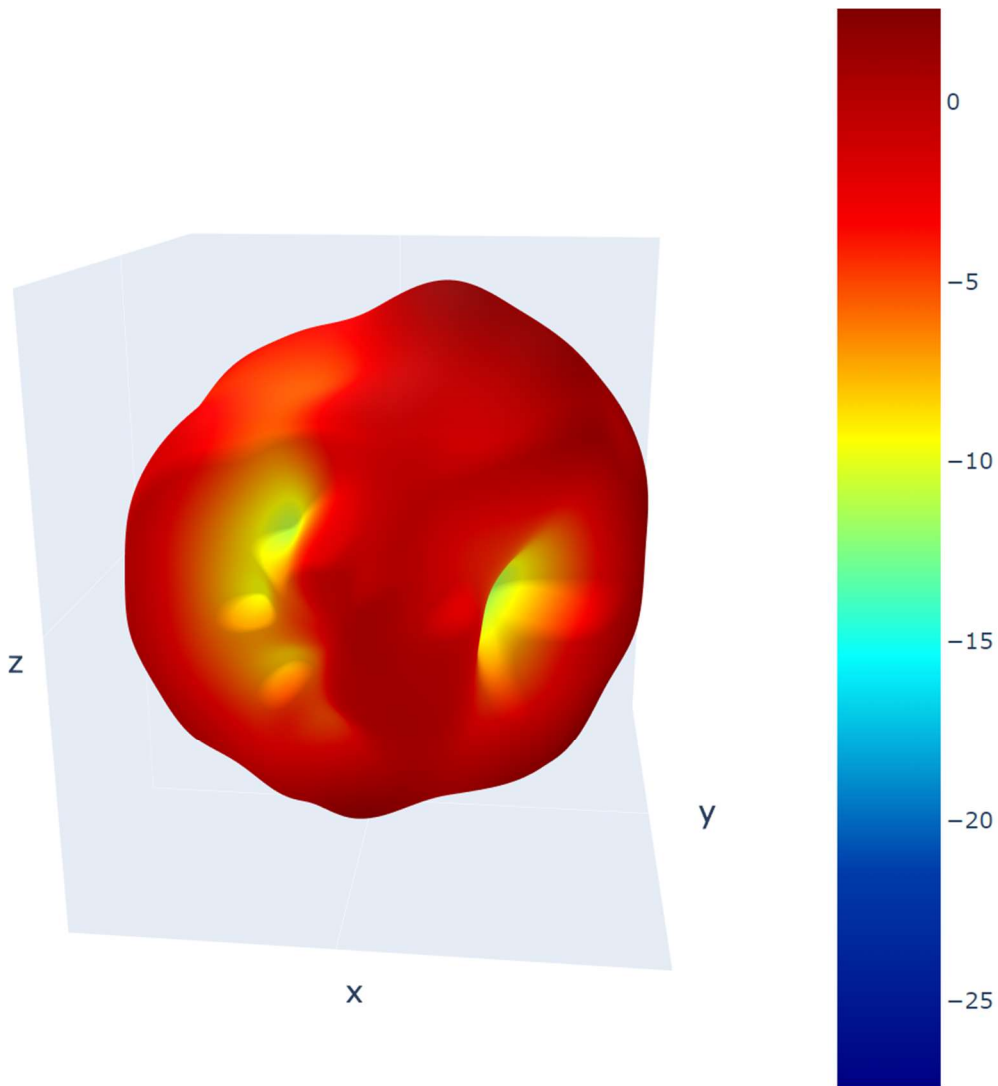
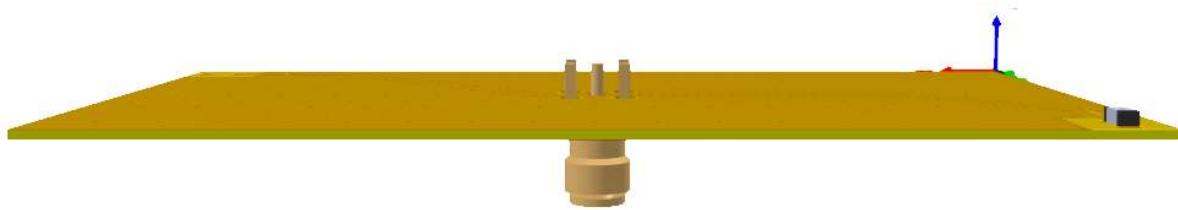


Check Inventory



3.2 x 1.6 x 1.2 mm  
RoHS/RoHS II Compliant  
MSL Level = N/A

## Radiation Characteristics – 3D Pattern @ 2450 MHz



Unit: dBi

# Ceramic Chip Antenna 2450 MHz



ACAG0301-2450-T

Request Samples

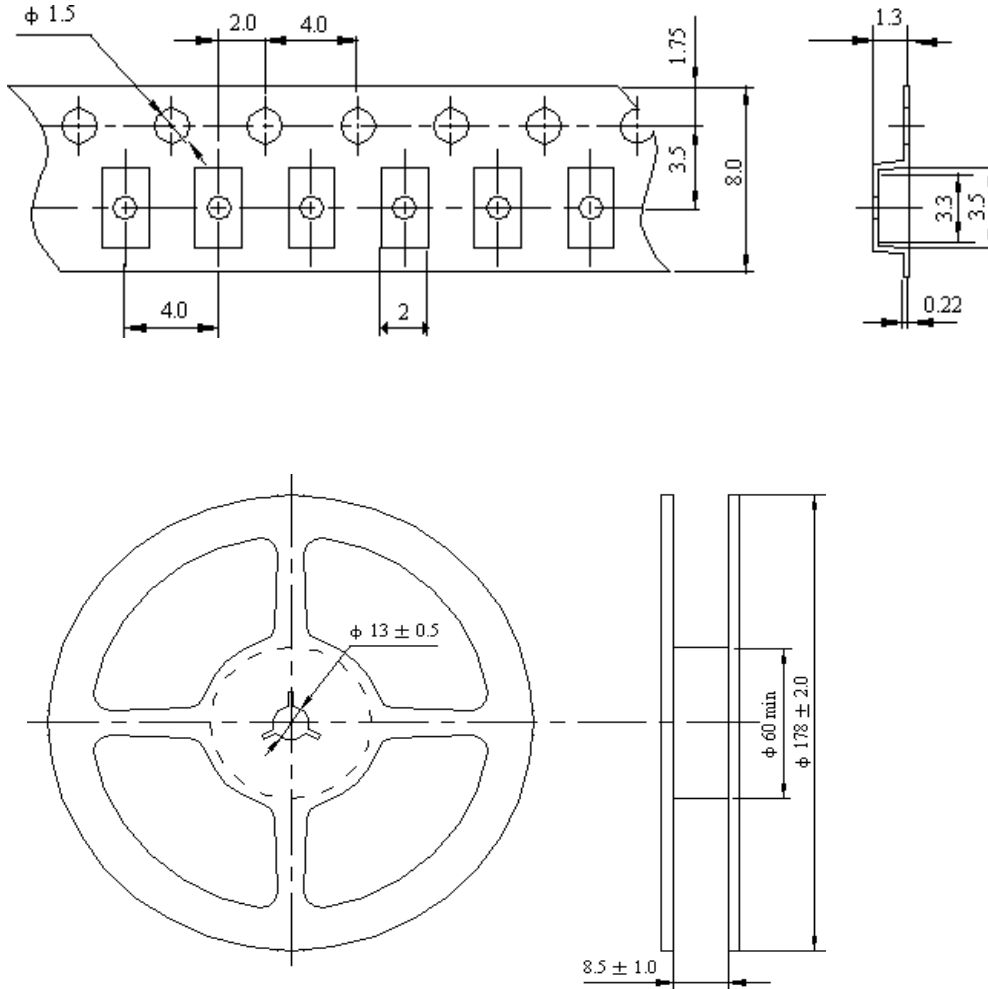


Check Inventory



**3.2 x 1.6 x 1.2 mm**  
**RoHS/RoHS II Compliant**  
MSL Level = N/A

## Packaging Information



There are **3000 pcs/Reel**.

Unit: mm

**ATTENTION:** Abracon LLC's products are Commercial-Off-The-Shelf ('COTS'), which are designed, intended, and validated for use in commercial, industrial, and automotive applications. The customer is responsible for testing and verifying the performance of an Abracon solution to meet their system-level requirements.



5101 Hidden Creek Ln Spicewood TX 78669  
Phone: 512-371-6159 | Fax: 512-351-8858  
For terms and conditions of sales, please visit:  
[www.abracon.com](http://www.abracon.com)

REVISED: 11-28-23

ABRACON IS  
ISO9001-2015  
CERTIFIED

## Looking for pricing, stock, or lifecycle information?

Click below to explore more details on WIN SOURCE:

 [View ACAG0301-2450-T on WIN SOURCE](#)

 [Abracon LLC Information](#)

## Optimize Your Supply Chain with WIN SOURCE Solutions

-  Global Sourcing Solution
-  Obsolete Management
-  Cost Control Management
-  Shortage Management
-  Alternative Solution
-  Excess Inventory Management