



**THE DATASHEET OF  
ASDMB-100.000MHZ-LY-T**



ASDMB

Request Samples



Check Inventory



ESD Sensitive



2.5 x 2.0 x 0.85 mm

RoHS/RoHS II Compliant

MSL Level = 1

**Features**

- Low Power Consumption <10mA
- Exceptional Stability +/- 10ppm Over Temp. at -40 to +105°C
- Compact QFN Plastic Packaging

**Applications**

- CCD Clock for VTR Camera
- Equipment Connected to PCs
- Low Profile Equipment
- Computers and Peripherals
- Portable Electronics
- Consumer Electronics
- Vibrant, Shock-Prone & Humid Environments for Industrial Equipment
- Demanding Military & Automotive Electronics

**Common Key Electrical Specifications**

| Parameters                      | Min.                                       | Typ. | Max.          | Units | Notes       |
|---------------------------------|--|------|---------------|-------|-------------|
| Frequency Range:                | 1.0  |      | 150           | MHz   |             |
| Operating Temperature:          | 0  |      | +70           | °C    | See options |
| Storage Temperature:            | -55  |      | +150          | °C    |             |
| Overall Frequency Stability*:   | -50  |      | +50           | ppm   | See options |
| Supply Voltage (Vdd):           | +1.8 ~ +3.3                                |      |               | V     |             |
| Output Load:                    |  |      | 15, 25, or 40 | pF    | See options |
|                                 | 10   |      |               | kΩ    |             |
| Symmetry:                       | 45   |      | 55            | %     | @1/2Vdd     |
| Startup Time:                   |  | 1.5  | 3.0           | ms    |             |
| Disable Time:                   |  | 20   | 100           | ns    |             |
| Disable Stand-by Current:       |  |      | 15            | uA    |             |
| Tri-state Function (Stand-by) : | "1" (VIH≥0.75*Vdd) or Open:<br>Oscillation |      |               |       |             |
|                                 | "0" (VIL<0.25*Vdd) : Hi Z                  |      |               | V     |             |
| Aging:                          | -5.0                                       |      | +5.0          | ppm   | First year  |



5101 Hidden Creek Ln Spicewood TX 78669  
 Phone: 512-371-6159 | Fax: 512-351-8858  
 For terms and conditions of sales, please visit:  
[www.abracon.com](http://www.abracon.com)

REVISED: 09-21-23

ABRACON IS  
 ISO9001-2015  
 CERTIFIED

ASDMB

Request Samples



Check Inventory



ESD Sensitive



2.5 x 2.0 x 0.85 mm

RoHS/RoHS II Compliant

MSL Level = 1

Key Electrical Specifications - Vdd = 1.8V

| Parameters                | Min.                | Typ.                | Max.                | Units | Notes   |                                |
|---------------------------|---------------------|---------------------|---------------------|-------|---|--------------------------------|
| Supply Current (no load): | 1.0 to 39.9999MHz   | 5                   | 15                  | mA    | CL=0pF<br>RL=∞<br>T=25°C<br>(Standard CL: 15pF) |                                |
|                           | 40.0 to 79.9999MHz  | 6                   | 15                  | mA    |   |                                |
|                           | 80.0 to 124.9999MHz | 7                   | 15                  | mA    |   |                                |
|                           | 125.0 to 150MHz     | 8                   | 15                  | mA    |   |                                |
|                           | 1.0 to 39.9999MHz   | 6                   | 15                  | mA    | CL=0pF<br>RL=∞<br>T=25°C<br>(CL option: 25pF)   |                                |
|                           | 40.0 to 79.9999MHz  | 7                   | 15                  | mA    |   |                                |
|                           | 80.0 to 124.9999MHz | 8                   | 15                  | mA    |   |                                |
|                           | 125.0 to 150MHz     | 9                   | 15                  | mA    |   |                                |
|                           | 1.0 to 39.9999MHz   | 7                   | 15                  | mA    | CL=0pF<br>RL=∞<br>T=25°C<br>(CL option: 40pF)   |                                |
|                           | 40.0 to 79.9999MHz  | 8                   | 15                  | mA    |   |                                |
|                           | 80.0 to 124.9999MHz | 9                   | 15                  | mA    |   |                                |
|                           | 125.0 to 150MHz     | 10                  | 15                  | mA    |   |                                |
| Output Voltage:           | V <sub>OH</sub>     | 0.8*V <sub>dd</sub> |                     | V     | CL=15, 25, 40pF                                 |                                |
|                           | V <sub>OL</sub>     |                     | 0.2*V <sub>dd</sub> | V     |   |                                |
| Rise Time:<br>Fall Time:  | Tr                  |                     | 1.8                 | 3.0   | ns  | CL=15pF; T=25°C<br>20%/80%*VDD |
|                           | Tf                  |                     | 1.0                 | 3.0   | ns  |                                |
|                           | Tr                  |                     | 1.5                 | 3.0   | ns  | CL=25pF; T=25°C<br>20%/80%*VDD |
|                           | Tf                  |                     | 1.2                 | 3.0   | ns  |                                |
|                           | Tr                  |                     | 1.4                 | 3.0   | ns  | CL=40pF; T=25°C<br>20%/80%*VDD |
|                           | Tf                  |                     | 1.1                 | 3.0   | ns  |                                |
| Cycle to Cycle Jitter:    |                     | 60                  |                     |       | ps  | F=100MHz                       |
| Period Jitter RMS:        |                     | 10                  |                     |       | ps  | F=100MHz                       |

INDUSTRIAL GRADE PLASTIC PACKAGE ULTRA MINIATURE PURE SILICON™ SMD CLOCK OSCILLATORS

ASDMB

Request Samples



Check Inventory



ESD Sensitive



2.5 x 2.0 x 0.85 mm

RoHS/RoHS II Compliant

MSL Level = 1

Key Electrical Specifications - Vdd = 2.5V

| Parameters                   |                              | Min.                | Typ. | Max.    | Units | Notes   |   |
|------------------------------|------------------------------|---------------------|------|---------|-------|---|---|
| Supply Current<br>(no load): | 1.0 to 39.9999MHz            |                     | 6    | 15      | mA    | CL=0pF<br>RL=∞<br>T=25°C<br>(Standard CL: 15pF) |   |
|                              | 40.0 to 79.9999MHz           |                     | 7    | 15      | mA    |   |   |
|                              | 80.0 to 124.9999MHz          |                     | 8    | 15      | mA    |   |   |
|                              | 125.0 to 150MHz              |                     | 9    | 15      | mA    |   |   |
|                              | Supply Current<br>(no load): | 1.0 to 39.9999MHz   |      | 7       | 15    | mA  | CL=0pF<br>RL=∞<br>T=25°C<br>(CL option: 25pF) |
|                              |                              | 40.0 to 79.9999MHz  |      | 8       | 15    | mA  |   |
|                              |                              | 80.0 to 124.9999MHz |      | 9       | 15    | mA  |   |
|                              |                              | 125.0 to 150MHz     |      | 10      | 15    | mA  |   |
|                              | Supply Current<br>(no load): | 1.0 to 39.9999MHz   |      | 8       | 16    | mA  | CL=0pF<br>RL=∞<br>T=25°C<br>(CL option: 40pF) |
|                              |                              | 40.0 to 79.9999MHz  |      | 9       | 16    | mA  |   |
|                              |                              | 80.0 to 124.9999MHz |      | 10      | 16    | mA  |   |
|                              |                              | 125.0 to 150MHz     |      | 11      | 16    | mA  |   |
| Output Voltage:              | V <sub>OH</sub>              | 0.8*Vdd             |      |         | V     | CL=15, 25, 40pF                                 |   |
|                              | V <sub>OL</sub>              |                     |      | 0.2*Vdd | V     |   |   |
|                              | V <sub>OH</sub>              | 0.9*Vdd             |      |         | V     | CL=40pF   |   |
|                              | V <sub>OL</sub>              |                     |      | 0.1*Vdd | V     |   |   |
| Rise Time:<br>Fall Time:     | Tr                           |                     | 1.0  | 2.0     | ns    | CL=15pF; T=25°C<br>20%/80%*VDD                  |   |
|                              | Tf                           |                     | 0.9  | 2.0     | ns    |   |   |
|                              | Tr                           |                     | 1.1  | 2.0     | ns    | CL=25pF; T=25°C<br>20%/80%*VDD                  |   |
|                              | Tf                           |                     | 0.9  | 2.0     | ns    |   |   |
|                              | Tr                           |                     | 1.0  | 2.0     | ns    | CL=40pF; T=25°C<br>20%/80%*VDD                  |   |
|                              | Tf                           |                     | 0.9  | 2.0     | ns    |   |   |
| Cycle to Cycle Jitter:       |                              |                     | 50   |         | ps    | F=100MHz  |   |
| Period Jitter RMS:           |                              |                     | 5    |         | ps    | F=100MHz  |   |



5101 Hidden Creek Ln Spicewood TX 78669  
 Phone: 512-371-6159 | Fax: 512-351-8858  
 For terms and conditions of sales, please visit:  
[www.abracon.com](http://www.abracon.com)

REVISED: 09-21-23

ABRACON IS  
 ISO9001-2015  
 CERTIFIED

INDUSTRIAL GRADE PLASTIC PACKAGE ULTRA MINIATURE PURE SILICON™ SMD CLOCK OSCILLATORS

ASDMB

Request Samples



Check Inventory



ESD Sensitive



2.5 x 2.0 x 0.85 mm

RoHS/RoHS II Compliant

MSL Level = 1

Key Electrical Specifications - Vdd = 3.3V

| Parameters                   | Min.                | Typ.    | Max. | Units   | Notes |   |
|------------------------------|---------------------|---------|------|---------|-------|---|
| Supply Current<br>(no load): | 1.0 to 39.9999MHz   |         | 7    | 15      | mA    | CL=0pF<br>RL=∞<br>T=25°C<br>(Standard CL: 15pF) |
|                              | 40.0 to 79.9999MHz  |         | 8    | 15      | mA    |   |
|                              | 80.0 to 124.9999MHz |         | 9    | 15      | mA    |   |
|                              | 125.0 to 150MHz     |         | 10   | 15      | mA    |   |
|                              | 1.0 to 39.9999MHz   |         | 8    | 16      | mA    | CL=0pF<br>RL=∞<br>T=25°C<br>(CL option: 25pF)   |
|                              | 40.0 to 79.9999MHz  |         | 9    | 16      | mA    |   |
|                              | 80.0 to 124.9999MHz |         | 10   | 16      | mA    |   |
|                              | 125.0 to 150MHz     |         | 11   | 16      | mA    |   |
|                              | 1.0 to 39.9999MHz   |         | 8    | 16      | mA    | CL=0pF<br>RL=∞<br>T=25°C<br>(CL option: 40pF)   |
|                              | 40.0 to 79.9999MHz  |         | 9    | 16      | mA    |   |
|                              | 80.0 to 124.9999MHz |         | 10   | 16      | mA    |   |
|                              | 125.0 to 150MHz     |         | 11   | 16      | mA    |   |
| Output Voltage:              | V <sub>OH</sub>     | 0.8*Vdd |      |         | V     | CL=15pF   |
|                              | V <sub>OL</sub>     |         |      | 0.2*Vdd | V     |   |
|                              | V <sub>OH</sub>     | 0.9*Vdd |      |         | V     | CL=25, 40pF                                     |
|                              | V <sub>OL</sub>     |         |      | 0.1*Vdd | V     |   |
| Rise Time:<br>Fall Time:     | Tr                  |         | 1.0  | 2.0     | ns    | CL=15pF; T=25°C<br>20%/80%*VDD                  |
|                              | Tf                  |         | 0.9  | 2.0     | ns    |   |
|                              | Tr                  |         | 1.0  | 2.0     | ns    | CL=25pF; T=25°C<br>20%/80%*VDD                  |
|                              | Tf                  |         | 0.9  | 2.0     | ns    |   |
|                              | Tr                  |         | 0.8  | 2.0     | ns    | CL=40pF; T=25°C<br>20%/80%*VDD                  |
|                              | Tf                  |         | 0.8  | 2.0     | ns    |   |
| Cycle to Cycle Jitter:       |                     |         | 50   |         | ps    | F=100MHz  |
| Period Jitter RMS:           |                     |         | 5    |         | ps    | F=100MHz  |



5101 Hidden Creek Ln Spicewood TX 78669  
 Phone: 512-371-6159 | Fax: 512-351-8858  
 For terms and conditions of sales, please visit:  
[www.abracon.com](http://www.abracon.com)

REVISED: 09-21-23

ABRACON IS  
 ISO9001-2015  
 CERTIFIED

ASDMB

Request Samples



Check Inventory



ESD Sensitive



2.5 x 2.0 x 0.85 mm  
 RoHS/RoHS II Compliant  
 MSL Level = 1

**Absolute Maximum Ratings**

| Item            | Min. | Max.    | Units | Condition |
|-----------------|------|---------|-------|-----------|
| Supply Voltage  | -0.3 | +4.0    | V     |           |
| Input Voltage   | -0.3 | Vdd+0.3 | V     |           |
| Junction Temp.  |      | +150    | °C    |           |
| Storage Temp.   | -55  | +150    | °C    |           |
| Soldering Temp. |      | +260    | °C    | 40sec max |
| ESD             |      |         | V     |           |
| HBM             |      | 4,000   |       |           |
| MM              |      | 200     |       |           |
| CDM             |      | 1,500   |       |           |

ASDMB

Request Samples 

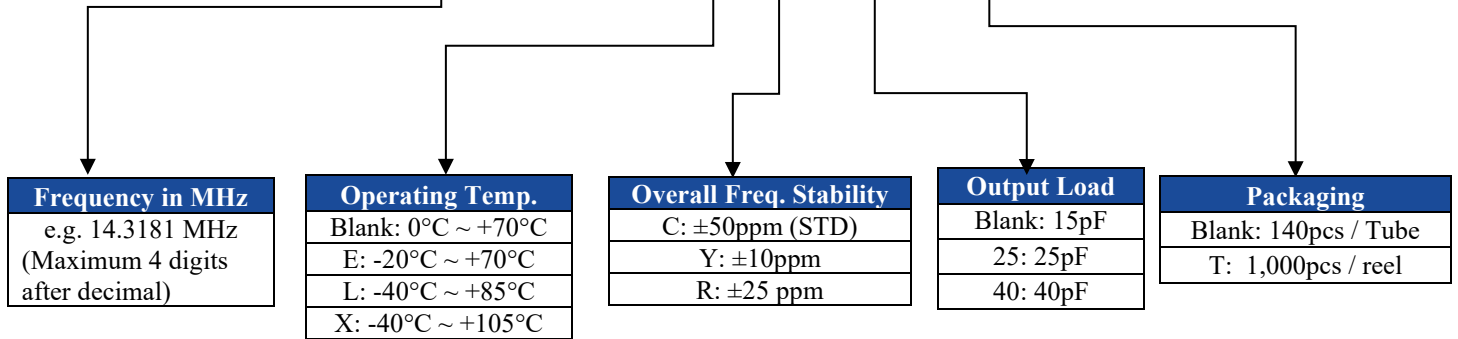
Check Inventory 



2.5 x 2.0 x 0.85 mm  
 RoHS/RoHS II Compliant  
 MSL Level = 1

Options and Part Identification

ASDMB -  MHz -   -  -



ASDMB

Request Samples



Check Inventory

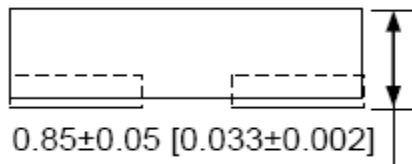
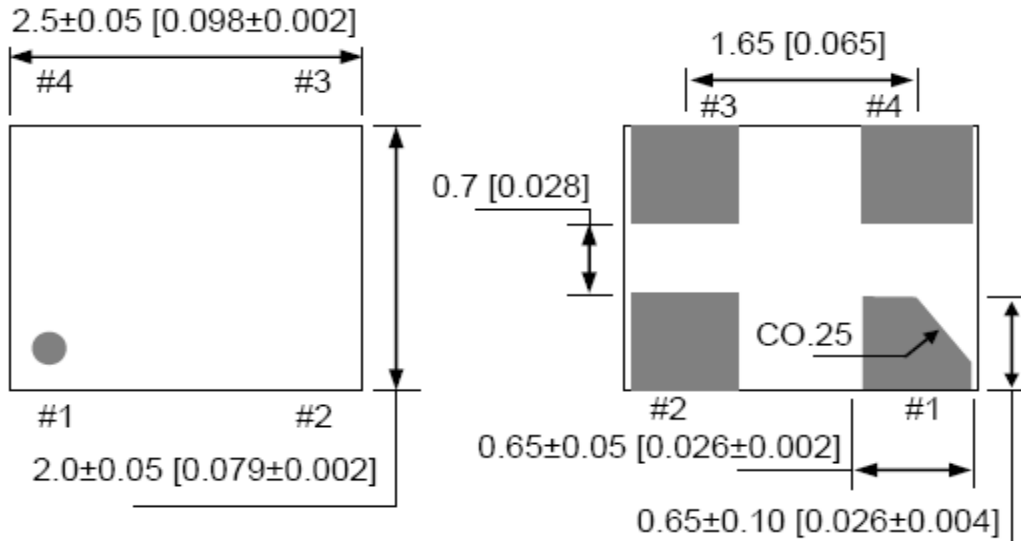


ESD Sensitive



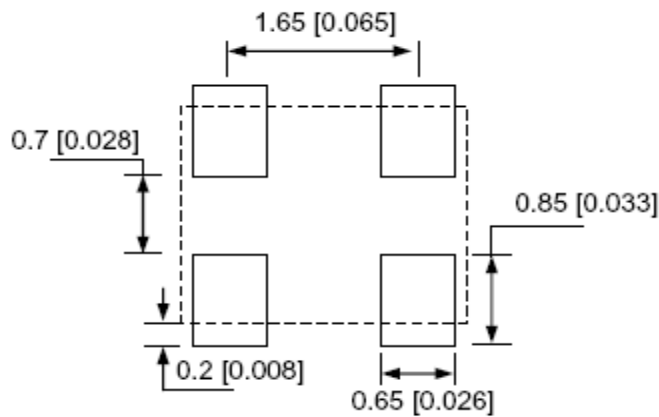
2.5 x 2.0 x 0.85 mm  
RoHS/RoHS II Compliant  
MSL Level = 1

**Mechanical Dimensions**



| No | Pin Terminal |
|----|--------------|
| 1  | Standby      |
| 2  | GND          |
| 3  | Output       |
| 4  | VDD          |

**Recommended Land Pattern**



Note: Recommend using an approximately 0.01uF bypass capacitor between PIN 2 and 4.

Dimensions: mm(inches)



5101 Hidden Creek Ln Spicewood TX 78669  
Phone: 512-371-6159 | Fax: 512-351-8858  
For terms and conditions of sales, please visit:  
www.abracon.com

REVISED: 09-21-23

ABRACON IS  
ISO9001-2015  
CERTIFIED

ASDMB

Request Samples

Check Inventory



2.5 x 2.0 x 0.85 mm  
RoHS/RoHS II Compliant  
MSL Level = 1

Reflow Profile [JEDEC J-STD-020]

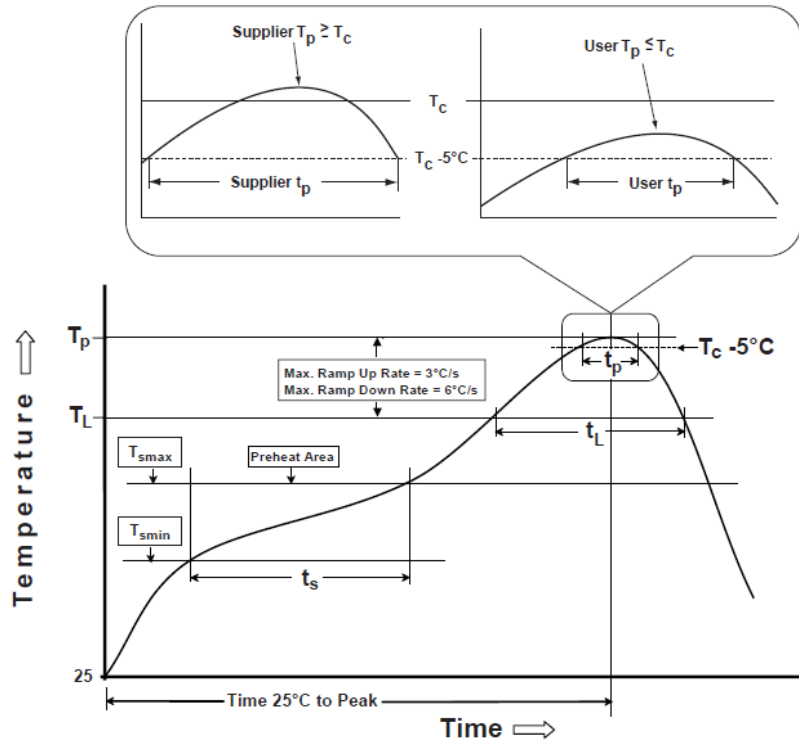


Table 1

| SnPb Eutectic Process Classification Temperatures ( $T_c$ ) |                           |                                 |
|---|---------------------------|---------------------------------|
| Package Thickness   | Volume $\text{mm}^3$ <350 | Volume $\text{mm}^3$ $\geq 350$ |
| <2.5 mm   | 235 °C                    | 220 °C                          |
| $\geq 2.5$ mm   | 220 °C                    | 220 °C                          |

Table 2

| Pb-Free Process Classification Temperatures ( $T_c$ ) |                           |                               |                            |
|---|---------------------------|-------------------------------|----------------------------|
| Package Thickness                                     | Volume $\text{mm}^3$ <350 | Volume $\text{mm}^3$ 350-2000 | Volume $\text{mm}^3$ >2000 |
| <1.6 mm   | 260 °C                    | 260 °C                        | 260 °C                     |
| 1.6 mm - 2.5 mm                                       | 260 °C                    | 250 °C                        | 245 °C                     |
| $>2.5$ mm   | 250 °C                    | 245 °C                        | 245 °C                     |

| Profile Feature   | Sn-Pb Eutectic Assembly    | Pb-Free Assembly           |
|---|----------------------------|----------------------------|
| Preheat / soak  |                            |                            |
| Temperature minimum ( $T_{smin}$ )  | 100°C                      | 150°C                      |
| Temperature maximum ( $T_{smax}$ )  | 150°C                      | 200°C                      |
| Time ( $T_{smin}$ to $T_{smax}$ ) ( $t_s$ )                                       | 60 - 120 sec.              | 60 - 120 sec.              |
| Average ramp-up rate ( $T_{smax}$ to $T_p$ )                                      | $3^\circ\text{C/sec. max}$ | $3^\circ\text{C/sec. max}$ |
| Liquidous temperature ( $T_L$ )   | 183°C                      | 217°C                      |
| Time at liquidous ( $t_L$ )   | 60 - 150 sec.              | 60 - 150 sec.              |
| Peak package body temperature ( $T_p$ )*  | see Table 1                | see Table 2                |
| Time ( $t_p$ )** within 5°C of the specified classification temperature ( $T_C$ ) | 20 sec.                    | 30 sec.                    |
| Ramp-down rate ( $T_p$ to $T_{smax}$ )  | $6^\circ\text{C/sec. max}$ | $6^\circ\text{C/sec. max}$ |
| Time 25°C to peak temperature   | 6 min. max                 | 8 min. max                 |
| Reflow cycles   | 2 max                      | 2 max                      |

\*Tolerance for peak profile temperature ( $T_p$ ) is defined as a supplier minimum and a user maximum.

\*\*Tolerance for time at peak profile temperature ( $t_p$ ) is defined as supplier minimum and a user maximum.



5101 Hidden Creek Ln Spicewood TX 78669  
Phone: 512-371-6159 | Fax: 512-351-8858  
For terms and conditions of sales, please visit:  
www.abracon.com

REVISED: 09-21-23

ABRACON IS  
ISO9001-2015  
CERTIFIED

INDUSTRIAL GRADE PLASTIC PACKAGE ULTRA MINIATURE PURE SILICON™ SMD CLOCK OSCILLATORS

ASDMB

Request Samples



Check Inventory



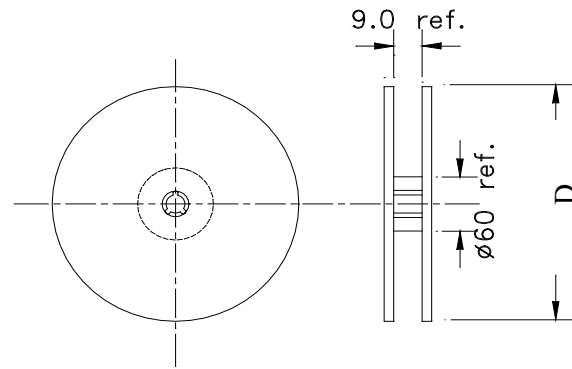
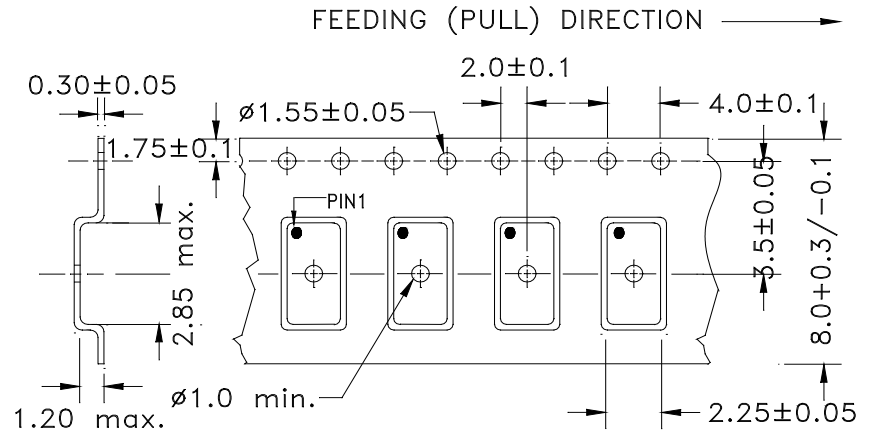
ESD Sensitive



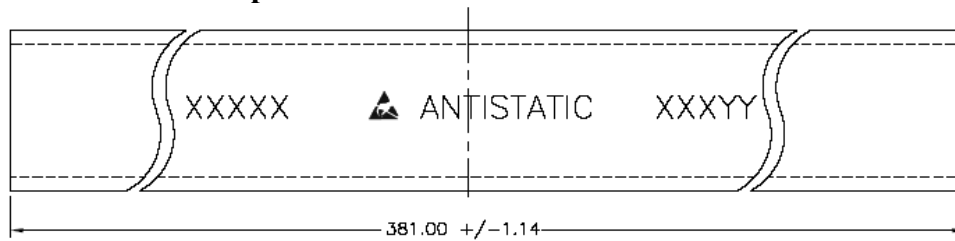
2.5 x 2.0 x 0.85 mm  
RoHS/RoHS II Compliant  
MSL Level = 1

Packaging

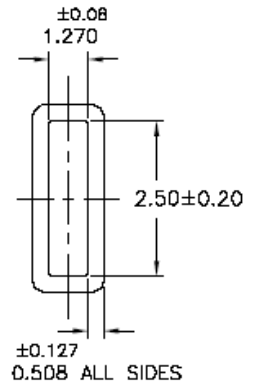
T= 1,000pcs/reel (D=180mm)



Tube: 140 pcs/tube



Unit orientation in tube:



Dimensions: mm

**ATTENTION:** Abracon LLC's products are COTS – Commercial-Off-The-Shelf products; suitable for Commercial, Industrial and, where designated, Automotive Applications. Abracon's products are not specifically designed for Military, Aviation, Aerospace, Life-dependent Medical applications or any application requiring high reliability where component failure could result in loss of life and/or property. For applications requiring high reliability and/or presenting an extreme operating environment, written consent and authorization from Abracon LLC is required. Please contact Abracon LLC for more information.



5101 Hidden Creek Ln Spicewood TX 78669  
Phone: 512-371-6159 | Fax: 512-351-8858  
For terms and conditions of sales, please visit:  
www.abracon.com

REVISED: 09-21-23

ABRACON IS  
ISO9001-2015  
CERTIFIED

## Looking for pricing, stock, or lifecycle information?

Click below to explore more details on WIN SOURCE:

- ⊖ [View ASDMB-100.000MHZ-LY-T on WIN SOURCE](#)
- ⊖ [Abracon LLC Information](#)

## Optimize Your Supply Chain with WIN SOURCE Solutions

- ✓ Global Sourcing Solution
- ✓ Obsolete Management
- ✓ Cost Control Management
- ✓ Shortage Management
- ✓ Alternative Solution
- ✓ Excess Inventory Management