



**THE DATASHEET OF  
ADZS-ICE-2000**



# **ICE-1000/ICE-2000 Emulator User's Guide**

Revision 1.0, May 2014

Part Number  
82-000617-01

Analog Devices, Inc.  
One Technology Way  
Norwood, Mass. 02062-9106



## **Copyright Information**

© 2014 Analog Devices, Inc., ALL RIGHTS RESERVED. This document may not be reproduced in any form without prior, express written consent from Analog Devices, Inc.

Printed in the USA.

## **Disclaimer**

Analog Devices, Inc. reserves the right to make changes to or to discontinue any product or service identified in this publication without notice.

Analog Devices assumes no liability for Analog Devices applications assistance, customer product design, customer software performance, or infringement of patents or services described herein. In addition, Analog Devices shall not be held liable for special, collateral, incidental or consequential damages in connection with or arising out of the furnishing, performance, or use of this product.

Analog Devices products are not intended for use in life-support applications, devices, or systems. Use of an Analog Devices product in such applications without the written consent of the appropriate Analog Devices officer is prohibited.

Users are restricted from copying, modifying, distributing, reverse engineering and reverse assembling or reverse compiling the Analog Devices emulator operational software (one copy may be made for back-up purposes only).

## Trademark and Service Mark Notice

The Analog Devices logo, Blackfin, CrossCore, EngineerZone, EZ-KIT Lite, and VisualDSP++ are registered trademarks of Analog Devices, Inc.

Blackfin+ is a trademark of Analog Devices, Inc.

All other brand and product names are trademarks or service marks of their respective owners.

## Regulatory Compliance

The ICE-1000/ICE-2000 emulator is designed to be used solely in a laboratory environment. The emulator is not intended for use as a consumer end product or as a portion of a consumer end product. The emulator board is an open system design which does not include a shielded enclosure and therefore may cause interference to other electrical devices in close proximity. This board should not be used in or near any medical equipment or RF devices.

The emulators are in the process of being certified to comply with the essential requirements of the European EMC directive 2004/108/EC and, therefore, carries the “CE” mark.



The emulator contains ESD (electrostatic discharge) sensitive devices. Electrostatic charges readily accumulate on the human body and equipment and can discharge without detection. Permanent damage may occur on devices subjected to high-energy discharges. Proper ESD precautions are recommended to avoid performance degradation or loss of functionality. Store unused emulators in the protective shipping package.





# CONTENTS

## PREFACE

Purpose of This Manual .....	viii
Intended Audience .....	viii
Manual Contents .....	viii
Technical Support .....	ix
Product Information .....	x
Analog Devices Web Site .....	x
EngineerZone .....	xi
Notation Conventions .....	xi

## GETTING STARTED

Contents of Emulator Package .....	1-2
PC Configuration .....	1-2
Emulator Installation Tasks .....	1-3
Installing the Emulator Software .....	1-3
Configuring Operating Voltage of the JTAG/SWD Interface on an ICE-1000 .....	1-4
Configuring Operating Voltage of the JTAG/SWD Interface on an ICE-2000 .....	1-5

## Contents

Verifying Driver Installation and Attaching to an Emulation Target .....	1-5
Applying Power to the Emulator .....	1-7
Configurator Software .....	1-8
JTAG/SWD Frequency .....	1-9
Troubleshooting and Warranty .....	1-9

## HARDWARE DESCRIPTION

LED .....	2-1
Connectors .....	2-2
Resetting the Target .....	2-2
Custom Processor Boards .....	2-3
Mechanical Specifications .....	2-3

## SUPPORT

Technical Support .....	3-1
Quality Assurance .....	3-2

## REFERENCES

## INDEX

# PREFACE

Thank you for purchasing the ICE-1000 or ICE-2000 emulator. The emulator is used in conjunction with the CrossCore<sup>®</sup> Embedded Studio or VisualDSP++<sup>®</sup> development environments to create, test, and debug advanced processor application software on Analog Devices Blackfin<sup>®</sup> and Blackfin+<sup>™</sup> processors.

The emulator provides state-of-the-art support for JTAG-compliant Analog Devices processors. Key features of the emulator include:

- Plug-n-Play, USB 2.0 compliant
- High-speed USB device
- USB bus-powered device
- Multiple processor I/O voltage support: 1.8V, 2.5V, and 3.3V compliance
- Multiprocessor support
- JTAG/SWD clock operation of 5 MHz on the ICE-1000  
JTAG/SWD clock operation up to 46 MHz on the ICE-2000

To learn more about Analog Devices emulators, go to:

<http://www.analog.com/processors/tools>

## Purpose of This Manual

# Purpose of This Manual

The *ICE-1000/ICE-2000 Emulator User's Guide* provides directions for installing the emulator hardware and software on your PC.

## Intended Audience

This manual is intended to help the customer understand the features and operation of the emulator so they can start using CrossCore Embedded Studio (CCES) and VisualDSP++.

## Manual Contents

The manual consists of:

- Chapter 1, [Getting Started](#)  
Provides software and hardware installation procedures, PC system requirements, and basic board information.
- Chapter 2, [Hardware Description](#)  
Provides information on hardware aspects of the emulator.
- Chapter 3, [Support](#)  
Provides technical support contact information.
- Chapter 4, [References](#)  
Provides information about different resources available for developing an application based on an Analog Devices processor.

## Technical Support

You can reach Analog Devices processors and DSP technical support in the following ways:

- Post your questions in the processors and DSP support community at EngineerZone®:  
<http://ez.analog.com/community/dsp>
- Submit your questions to technical support directly at:  
<http://www.analog.com/support>
- E-mail your questions about processors, DSPs, and tools development software from **CrossCore Embedded Studio** or **VisualDSP++**:

Choose **Help > Email Support**. This creates an e-mail to [processor.tools.support@analog.com](mailto:processor.tools.support@analog.com) and automatically attaches your **CrossCore Embedded Studio** or **VisualDSP++** version information and `license.dat` file.

- E-mail your questions about processors and processor applications to:  
[processor.support@analog.com](mailto:processor.support@analog.com) or  
[processor.china@analog.com](mailto:processor.china@analog.com) (Greater China support)
- Contact your Analog Devices sales office or authorized distributor. Locate one at:  
[www.analog.com/adi-sales](http://www.analog.com/adi-sales)
- Send questions by mail to:  
Processors and DSP Technical Support  
Analog Devices, Inc.  
Three Technology Way  
P.O. Box 9106  
Norwood, MA 02062-9106  
USA

## Product Information

# Product Information

Product information can be obtained from the Analog Devices Web site and the CCES online help.

## Analog Devices Web Site

The Analog Devices Web site, [www.analog.com](http://www.analog.com), provides information about a broad range of products—analogue integrated circuits, amplifiers, converters, and digital signal processors.

To access a complete technical library for each processor family, go to [http://www.analog.com/processors/technical\\_library](http://www.analog.com/processors/technical_library). The manuals selection opens a list of current manuals related to the product as well as a link to the previous revisions of the manuals. When locating your manual title, note a possible errata check mark next to the title that leads to the current correction report against the manual.

Also note, [myAnalog](#) is a free feature of the Analog Devices Web site that allows customization of a Web page to display only the latest information about products you are interested in. You can choose to receive weekly e-mail notifications containing updates to the Web pages that meet your interests, including documentation errata against all manuals.

[myAnalog](#) provides access to books, application notes, data sheets, code examples, and more.

Visit [myAnalog](#) to sign up. If you are a registered user, just log on. Your user name is your e-mail address.

## EngineerZone

EngineerZone is a technical support forum from Analog Devices. It allows you direct access to ADI technical support engineers. You can search FAQs and technical information to get quick answers to your embedded processing and DSP design questions.




Use EngineerZone to connect with other DSP developers who face similar design challenges. You can also use this open forum to share knowledge and collaborate with the ADI support team and your peers. Visit <http://ez.analog.com> to sign up.

## Notation Conventions

Text conventions used in this manual are identified and described as follows.


Example	Description
<b>File &gt; Close</b>	Titles in bold style reference sections indicate the location of an item within the CrossCore Embedded Studio's menu system (for example, the <b>Close</b> command appears on the <b>File</b> menu).
{this   that}	Alternative required items in syntax descriptions appear within curly brackets and separated by vertical bars; read the example as <i>this</i> or <i>that</i> . One or the other is required.
[this   that]	Optional items in syntax descriptions appear within brackets and separated by vertical bars; read the example as an optional <i>this</i> or <i>that</i> .
[this,...]	Optional item lists in syntax descriptions appear within brackets delimited by commas and terminated with an ellipsis; read the example as an optional comma-separated list of <i>this</i> .
.SECTION	Commands, directives, keywords, and feature names are in text with letter gothic font.
<i>filename</i>	Non-keyword placeholders appear in text with italic style format.

## Notation Conventions

Example	Description
	<p><b>Note:</b> For correct operation, ...</p> <p>A Note provides supplementary information on a related topic. In the online version of this book, the word <b>Note</b> appears instead of this symbol.</p>
	<p><b>Caution:</b> Incorrect device operation may result if ...</p> <p><b>Caution:</b> Device damage may result if ...</p> <p>A Caution identifies conditions or inappropriate usage of the product that could lead to undesirable results or product damage. In the online version of this book, the word <b>Caution</b> appears instead of this symbol.</p>
	<p><b>Warning:</b> Injury to device users may result if ...</p> <p>A Warning identifies conditions or inappropriate usage of the product that could lead to conditions that are potentially hazardous for devices users. In the online version of this book, the word <b>Warning</b> appears instead of this symbol.</p>

# 1 GETTING STARTED

This chapter provides the information needed to begin using Analog Devices emulators.

 Analog Devices emulators are not intended to be used in a production environment.

This chapter includes the following sections.

- [Contents of Emulator Package](#)  
Provides a list of components shipped with the emulator.
- [PC Configuration](#)  
Describes the minimal PC requirements.
- [Emulator Installation Tasks](#)  
Provides a step-by-step procedure for setting up the emulator hardware and describes how to connect the emulators to your target board.
- [Configurator Software](#)  
Describes the target configurator utility.
- [JTAG/SWD Frequency](#)  
Provides information on JTAG/SWD frequency limitations.
- [Troubleshooting and Warranty](#)  
Points to an Engineer-to-Engineer Note for troubleshooting advice and warranty information.

## Contents of Emulator Package

# Contents of Emulator Package

The ICE-1000 emulator package contains the following items:

- ICE-1000 emulator
- 2-meter USB standard-A to mini-B cable

The ICE-2000 emulator package contains the following items:

- ICE-2000 emulator with enclosure
- 6-inch 0.05" cable assembly
- 10-pin to 14-pin adapter used for connecting to the legacy 0.1" 14-pin JTAG header
- 2-meter USB standard-A to mini-B cable

## PC Configuration

For correct operation of the emulator, your computer must have the minimal configuration:

- Windows 7
- CrossCore Embedded Studio 1.1.0 or VisualDSP++ 5.1.1 (or higher)

# Emulator Installation Tasks

Perform the following tasks to install your emulator safely. Follow the instructions in presented order to ensure correct operation of your software and hardware.

1. [Installing the Emulator Software](#)
2. [Configuring Operating Voltage of the JTAG/SWD Interface on an ICE-1000](#)
3. [Configuring Operating Voltage of the JTAG/SWD Interface on an ICE-2000](#)
4. [Verifying Driver Installation and Attaching to an Emulation Target](#)
5. [Applying Power to the Emulator](#)

## Installing the Emulator Software

Install CCES 1.1.0 or VisualDSP++ 5.1.1 (or higher) on your computer. The software installation includes the USB driver needed for the emulator hardware.

**Note:** If you connect to the ICE before installing the software, the Windows driver wizard may not find the emulator driver.

## Emulator Installation Tasks

### Configuring Operating Voltage of the JTAG/SWD Interface on an ICE-1000

Determine the operating voltage of the target processor's JTAG/SWD interface. The ICE-1000 emulator ships configured for connecting to a 3.3V target. The jumpers are installed on positions 1 and 3, and 2 and 4 (default) of JP1. Refer to [Table 1-1](#) and [Figure 1-1](#) for configuring other voltages.

Table 1-1. Operating Voltage

Target Voltage	JP1 Settings (Installed Jumpers)
3.3 volts	1 and 3, 2 and 4
2.5 volts	1 and 2, 3 and 4
1.8 volts	3 and 5, 2 and 4

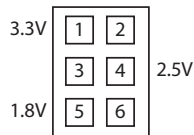



Figure 1-1. JP1 Pinout

### Configuring Operating Voltage of the JTAG/SWD Interface on an ICE-2000

Determine the operating voltage of the target processor's JTAG/SWD interface. On the ICE-2000 emulator, the voltage is configured when making a platform using the configurator. The default voltage is 3.3V. Refer to the online help for information about "target configurator".

 Before connecting to a target, see the power-up/down procedures in [Applying Power to the Emulator](#).

### Verifying Driver Installation and Attaching to an Emulation Target

Before using the emulator, verify that the driver software is installed properly.

1. Open the Windows **Device Manager** and verify that the ICE-1000 or ICE-2000 emulator appears under **CrossCore Tools**, as shown in [Figure 1-2](#).
2. When connecting to a 10-pin header on a target board, connect to either the 6" cable when using the ICE-2000 or to the (J2) connector (located on the bottom of the board) when using the ICE-1000. The 10-pin housing is keyed to ensure that the signals mate correctly with the 10-pin target emulation header. The target board should also have keyed housing. Refer to [Figure 1-3](#) for the J2 and cable pinout information.

## Emulator Installation Tasks

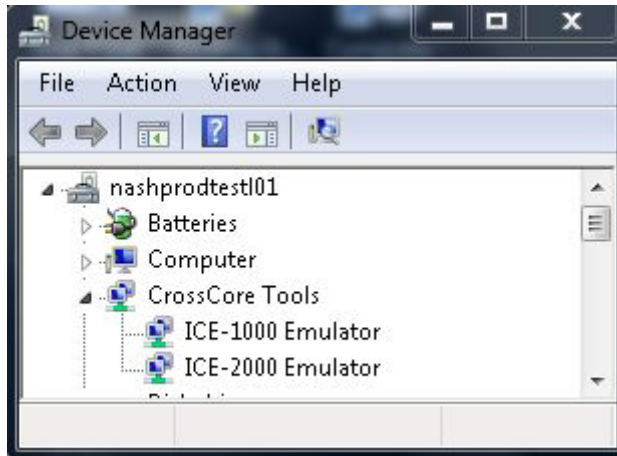


Figure 1-2. Verifying Driver Installation



Figure 1-3. J2 Pinout

When connecting to a 14-pin header on a target board, connect to either the 6" cable along with the supplied adapter board when using the ICE-2000 or to the (J1) connector (located at the end) when using the ICE-1000.

## Getting Started

The 14-pin connector is keyed at pin 3 on the emulator connector to ensure that the signals mate correctly with the 14-pin target emulation header. The target board should also have pin 3 of the JTAG interface connector cut. Refer to [Figure 1-4](#) for J1 and adapter board pinout information.

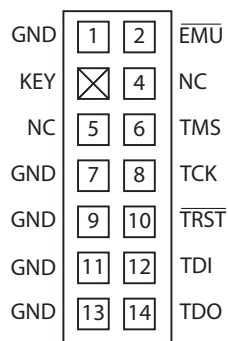


Figure 1-4. J1 Pinout

## Applying Power to the Emulator

To power up the emulator:

1. Apply power to the target board.
2. Connect the USB cable between the emulator and the PC.

The emulator is a bus-powered device, so this step powers the emulator.

3. If the emulator is not connected to the target, connect the devices as described in [Verifying Driver Installation and Attaching to an Emulation Target](#).
4. Invoke CrossCore Embedded Studio or VisualDSP++.

## Configurator Software

To power down the emulator:

1. Shut down (exit) CrossCore Embedded Studio or VisualDSP++.
2. Disconnect the USB cable between the emulator and the PC.
3. Power down the target board.
4. The emulator can now be removed from the target.

For custom processor boards still in design, refer to an Engineer-to-Engineer Note, “*Analog Devices JTAG/SWD Emulation Technical Reference (EE-68)*”, available from the Analog Devices Web site. This document is a technical reference for implementing the JTAG/SWD interface on your target.

Now the emulator hardware is ready to be used in conjunction with CCES or VisualDSP++ to debug a processor target system. Refer to [Configurator Software](#) for more information.

## Configurator Software


CrossCore Embedded Studio and VisualDSP++ development software require a description of your *platform* (JTAG/SWD chain). The platform definition is necessary for the software to communicate with the hardware through the emulator.

CrossCore Embedded Studio and VisualDSP++ development software include the target configurator utility to configure and test your emulator hardware. The target configurator provides emulator detection and JTAG/SWD I/O voltage. Use the ICE Test (part of the target configurator) to test the connection with the target. If any errors are encountered, the errors are reported immediately and the test ends. Each error message recommends a solution to the problem.

Refer to the online help for information about “target configurator”, “JTAG/SWD voltage”, “JTAG/SWD frequency”, and “ICE test”.

## JTAG/SWD Frequency

The ICE-1000 emulator supports JTAG/SWD clock operation at 5 MHz. The ICE-2000 emulator supports JTAG/SWD clock operation at 1, 5, 9, 15, 23 and 46 MHz. There is a relationship between the JTAG/SWD frequency and the core clock frequency of the processor. The core clock should be at least twice the JTAG/SWD frequency in order for the JTAG/SWD interface to operate properly. On newer Analog Devices processors, the core clock is a variable set by software.

-  If the core/JTAG/SWD clock relation is not followed, scan failures may prevent the emulator from connecting to the processor.

## Troubleshooting and Warranty

To provide comprehensive troubleshooting advice and warranty information for all emulator and EZ-KIT Lite<sup>®</sup> products, Analog Devices maintains two Engineer-to-Engineer Notes—*Emulator and Evaluation Hardware Troubleshooting Guide for VisualDSP++ Users (EE-175)* and *Emulator and Evaluation Hardware Troubleshooting Guide for CCES Users (EE-356)*. Both EE-Notes are available online at <http://www.analog.com>.

The EE-Note can be used to resolve most installation, connection, and software issues affecting the use of Analog Devices in-circuit emulators (ICEs) and EZ-KIT Lite evaluation systems, avoiding the need to return the suspected faulty emulator or EZ-KIT Lite board. Please carry out all troubleshooting steps outlined in this document before contacting Analog Devices Processor Tools Support.

## Troubleshooting and Warranty

Also included in the EE-Note, complete warranty and return material authorization (RMA) information for emulators and EZ-KIT Lite products. In general, emulators less than one year old are within warranty, and repairs within that period are free of charge, but there are some limitations to this warranty coverage. For details, see the note.

## 2 HARDWARE DESCRIPTION

This chapter describes the hardware design of the ICE-1000/ICE-2000 emulator and includes the following sections:

- [LED](#)  
Describes the LED which inform you of the emulator's status.
- [Resetting the Target](#)  
Describes how to reset the target.
- [Custom Processor Boards](#)  
Describes concerns regarding board lay out.
- [Mechanical Specifications](#)  
Provides dimensional information.

### LED

There is one multicolored LED located on the emulator. It is labeled Status.

- Green – Signifies that the ICE is powered, configured and ready to invoke a CCES or VisualDSP++ session.
- Magenta – Signifies that the ICE is operating in JTAG mode. The LED will blink during USB activity between the host PC and the emulator.

## Connectors

- Cyan – Signifies that the ICE is operating in SWD mode. The LED will blink during USB activity between the host PC and the emulator.
- Yellow – Signifies that there is an issue with the EMU signal on the target board and therefore this signal will be ignored by the emulator.

## Connectors

There are two connectors on the ICE-1000 used for connecting to a target. J1 is a 0.1" 14-pin connector used for interfacing with legacy targets. This connector only supports debugging via JTAG mode. J2 is a 0.05" 10-pin connector used for JTAG/SWD mode on newer processors.

There is one connector on the ICE-2000. This connects to the 6" ribbon cable that comes with the emulator package. The ribbon cable connects to a 0.05" 10-pin connector on the target board and supports JTAG/ and SWD mode. When connecting the ICE-2000 to older target boards that have the 0.1" 14-pin JTAG connector, there is an adapter that is also included in the box for this connection. The adapter board connects between the cable and target board.

## Resetting the Target

When debugging remotely, the ability to reset the target can be very useful. In order to use this feature, the  $\overline{\text{RESET}}$  signal from the target board should be connected to pin 10 of the 10-pin debug connector. This is an active low signal and is toggled through software.

To reset the target through the software, use the **Reset Target** command.

- CCES users choose **Target > Debug > Reset Target**.
- VisualDSP++ users choose **Debug > Reset Target**.

The **Reset Target** command sends a reset pulse of the specified duration to the target. The reset duration is configured by choosing **Target > Settings > Reset Target Options**. See the online help for more information.

## Custom Processor Boards

When designing a custom processor board using Analog Devices processors and DSPs, special care must be taken to ensure that the JTAG/SWD interface is designed and laid out correctly. If the board is not designed correctly, communication via the JTAG/SWD port may not work. Another side effect may be that the interface works, but you are not able to run at the highest possible JTAG/SWD clock frequency. The JTAG/SWD clock frequency is dependent on the particular Analog Devices processor, as well as the delay characteristics of the custom processor board.

To ensure that the custom board's JTAG/SWD interface is designed and laid out correctly, refer to Engineer-to-Engineer Note, *Analog Devices JTAG/SWD Emulation Technical Reference (EE-68)*, available from the Analog Devices Web site. This document is a technical reference for implementing the JTAG/SWD interface on your target.

## Mechanical Specifications

The outer dimensions of the emulator are 3.39" x 0.785". The height of the JTAG/SWD connector (J2) is approximately 0.180". Refer to [Figure 2-1](#).

## Mechanical Specifications

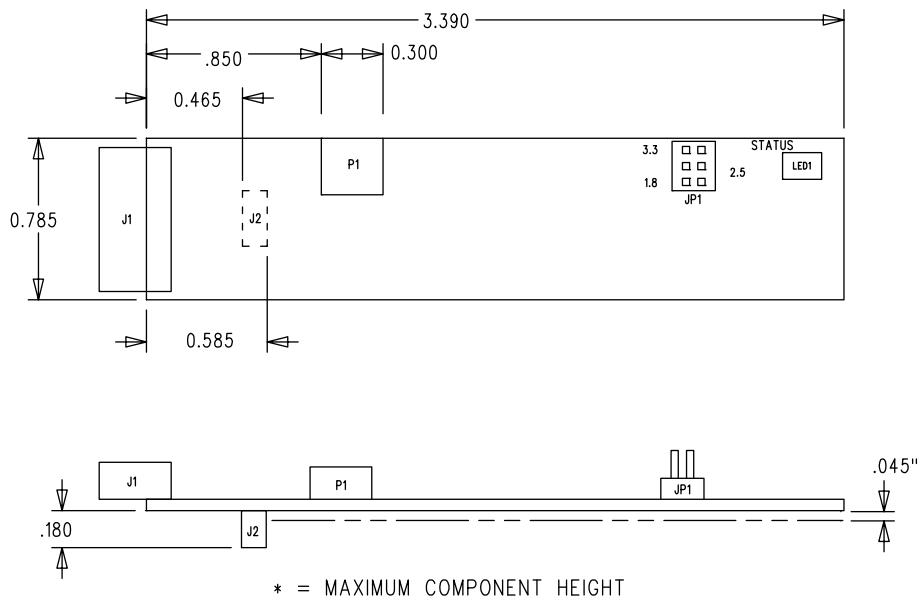


Figure 2-1. Emulator Dimensions (in inches)

Care must be taken when locating a custom target JTAG/SWD interface connector, that no components are taller than about 0.135" if located under the ICE-1000.

⚡ If there are any concerns that emulator components may short to the target board, an insulator should be used to provide protection.

# 3 SUPPORT

Analog Devices provides free technical support.

## Technical Support

For technical support, visit the Embedded Processing and DSP Technical Support page at: <http://www.analog.com/support>.

From there you can:

- Access the EngineerZone DSP Support Forum where Analog Devices support team members and other designers exchange ideas and answer questions
- Search our vast Knowledge Base containing application notes, data sheets, code examples, manuals, and more
- Contact our Technical Support team directly by filling out the support form

Alternately, you can contact Technical Support directly as follows:

- For tools issues, send a description of the problem by e-mail to: [processor.tools.support@analog.com](mailto:processor.tools.support@analog.com)
- For processor issues, send a description of the problem by e-mail to the Application Engineering group at: [processor.support@analog.com](mailto:processor.support@analog.com) (World wide support)

## Quality Assurance

# Quality Assurance

Analog Devices is committed to providing quality products and services. To continually provide this quality, please contact our Quality Assurance Department directly if you have any concerns at (603) 883-2430, Monday through Friday during normal business hours, or via e-mail at: [processor.tools.support@analog.com](mailto:processor.tools.support@analog.com).

Our Quality Assurance manager will listen to your concerns and provide a timely and effective solution.

## 4 REFERENCES

This section describes documentation resources helpful in your application development.

- For information on designing the interface between an Analog Devices processor and the emulation header on your custom processor target board, refer to Engineer-to-Engineer Note, *Analog Devices JTAG/SWD Emulation Technical Reference (EE-68)*, available from the Analog Devices Web site.
- For information on the architecture and system interface of the Analog Devices processor, refer to the appropriate Analog Devices processor's hardware reference manual.
- For processor timing specification and other hardware design information, refer to the appropriate processor's data sheet.
- For complete information on software development tools (assembler, compiler, linker, and so on), refer to documentation included with CrossCore Embedded Studio or VisualDSP++. This information is available in the online help and PDF format in the `Docs` folder.
- For information about your development platform, refer to your operating system manuals and hardware system manuals.



# I INDEX

## C

configurator utility, [1-8](#)  
configuring operating voltage, [1-4](#), [1-5](#)  
connectors, [2-2](#)  
contents, emulator package, [1-2](#)  
custom processor boards, [2-3](#)

## D

data sheets, [4-1](#)  
designing custom boards, [2-3](#)  
Device Manager window, [1-5](#)  
documentation resources, [4-1](#)  
driver installation, [1-5](#)

## E

EE-175, [1-1](#), [1-9](#)  
EE-356, [1-1](#), [1-9](#)  
EE-68, [1-8](#), [2-3](#), [4-1](#)  
emulator connectors, [2-2](#)  
emulator troubleshooting, [1-1](#), [1-9](#)  
emulator warranty, [1-9](#)  
EngineerZone, [xi](#)

## F

frequency, [2-3](#)

## H

hardware  
description, [2-1](#)  
references, [4-1](#)  
high-speed USB device, [vii](#)

## I

installation of software, [1-3](#)  
I/O voltage, [vii](#)

## J

JTAG frequency, [1-9](#)  
JTAG/SWD  
clock frequency, [2-3](#)  
clock operation, [vii](#)  
frequency, [1-9](#)  
header, [2-3](#)  
port, [2-3](#)  
JTAG/SWD frequency, [1-9](#)

## L

LED, [2-1](#)

## M

mechanical specifications, [2-3](#)  
multiprocessor support, [vii](#)

## Index

### P

PC configuration, [1-2](#)

powering up the emulator, [1-7](#)

### Q

quality assurance, [3-2](#)

### R

resetting the target, [2-2](#)

### T

target, resetting, [2-2](#)

technical support, [ix](#), [3-1](#)

### V

verifying driver installation, [1-5](#)

## Looking for pricing, stock, or lifecycle information?

Click below to explore more details on WIN SOURCE:

 [View ADZS-ICE-2000 on WIN SOURCE](#)

 [Analog Devices Inc. Information](#)

## Optimize Your Supply Chain with WIN SOURCE Solutions

-  Global Sourcing Solution
-  Obsolete Management
-  Cost Control Management
-  Shortage Management
-  Alternative Solution
-  Excess Inventory Management