



# THE DATASHEET OF PVB4EE300NSLFS



# PVB

## Low Profile SMT Push Switches



### Features/Benefits

- Compact design
- Adapted for medium power applications
- SMD soldering process
- Tape & reel packaging
- RoHS compliant and compatible

### Typical Applications

- Automotive (air conditioning, lighting)
- Industrial
- Control panels

### Construction

FUNCTION: Momentary, Push-Push  
 CONTACT ARRANGEMENT: SPDT (PVB4); DPDT (PVB6)  
 SWITCHING MODE: Non-shorting  
 TERMINALS: G termination  
 PC Pins for THT version

### Mechanical

TOTAL TRAVEL / LATCHING TRAVEL:  
 OA: 2,3 mm  
 EE: 2,3 / 1,5 mm  
 OPERATING FORCE: 3N

### Process

SOLDERING:  
 Compatible with lead free soldering process

### Packaging

PVB4 - 150 pieces  
 PVB6 - 200 pieces per reel for SMT version  
 PVB6 - 600 pieces per box for THT version

### Electrical

SWITCHING POWER MAX.: PVB4: 1,4 W DC ; PVB6: 2,8 W DC  
 SWITCHING VOLTAGE MAX.: 14 V DC  
 SWITCHING CURRENT MAX.: PVB4: 100 mA DC; PVB6: 200 mA DC  
 DIELECTRIC STRENGTH (50 Hz / 1 min): 500 V between open contacts  
 OPERATING LIFE:  
 PVB4 / PVB6  
 OA (momentary):  $\geq 100,000$  cycles  
 EE (push-push):  $\geq 100,000$  cycles  
 CONTACT RESISTANCE: Initial  $\leq 150$  m $\Omega$   
 INSULATION RESISTANCE:  $\geq 10^8 \Omega$ (100 VDC - 60s)

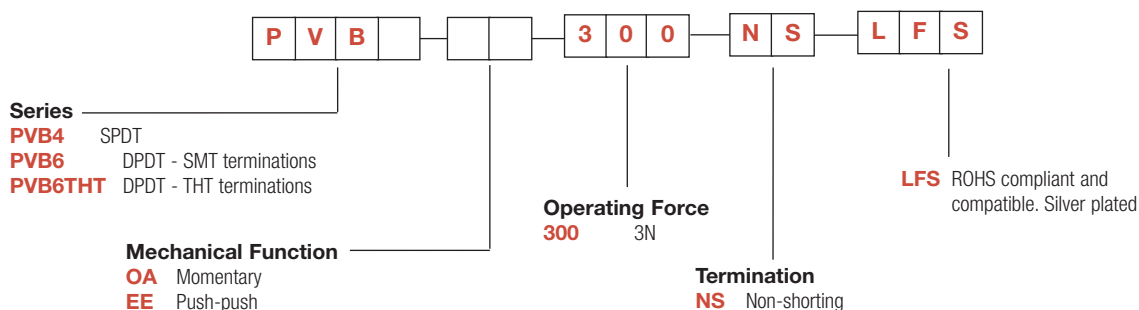
### Environmental

OPERATING TEMPERATURE: -40°C to 80°C



### How To Order

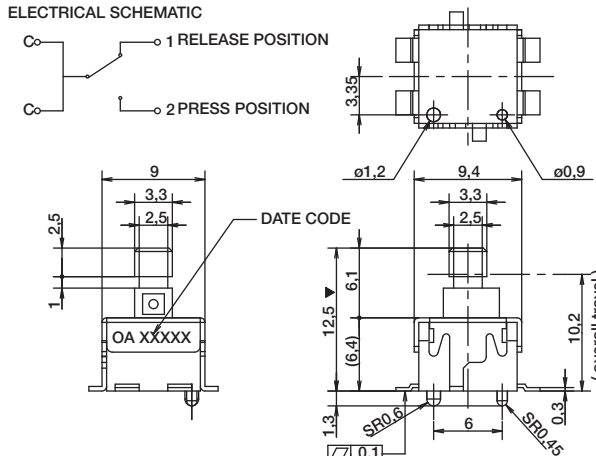
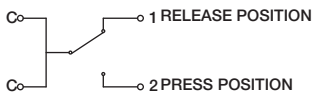
Our easy build-a-switch concept allows you to mix and match options to create the switch you need. To order, select desired option from each category and place it in the appropriate box. **Some of the configurations may not be available or could require some development.**



# PVB Low Profile SMT Push Switches

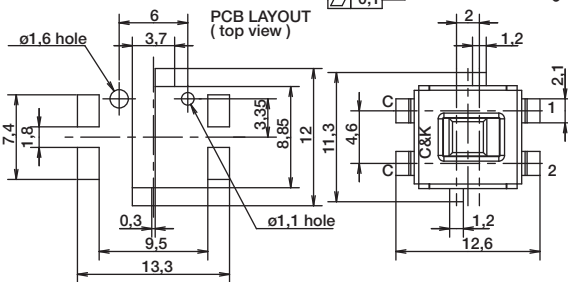
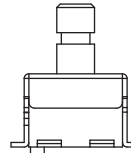
## PVB4 OA MOMENTARY

ELECTRICAL SCHEMATIC



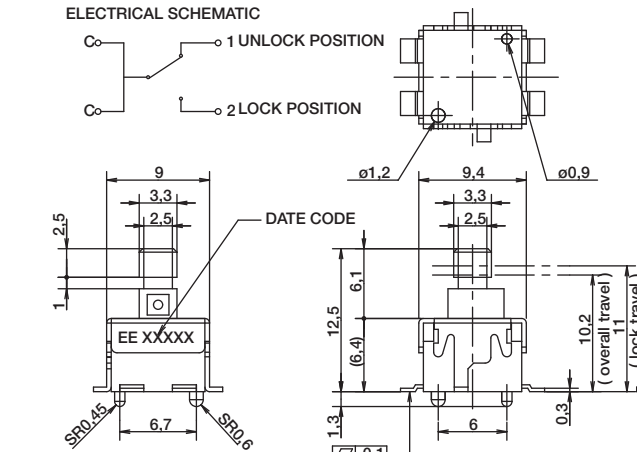
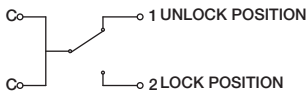
Year  
Week  
Day for the week

X X X X X For example 12022 indicates 2012 YEAR - 02 WEEK - 2 TUESDAY



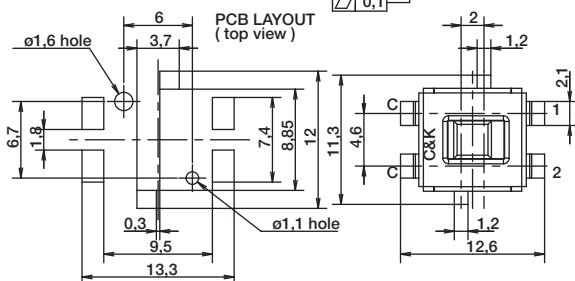
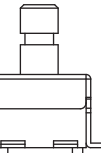
## PVB4 EE PUSH PUSH

ELECTRICAL SCHEMATIC



Year  
Week  
Day for the week

X X X X X For example 12022 indicates 2012 YEAR - 02 WEEK - 2 TUESDAY

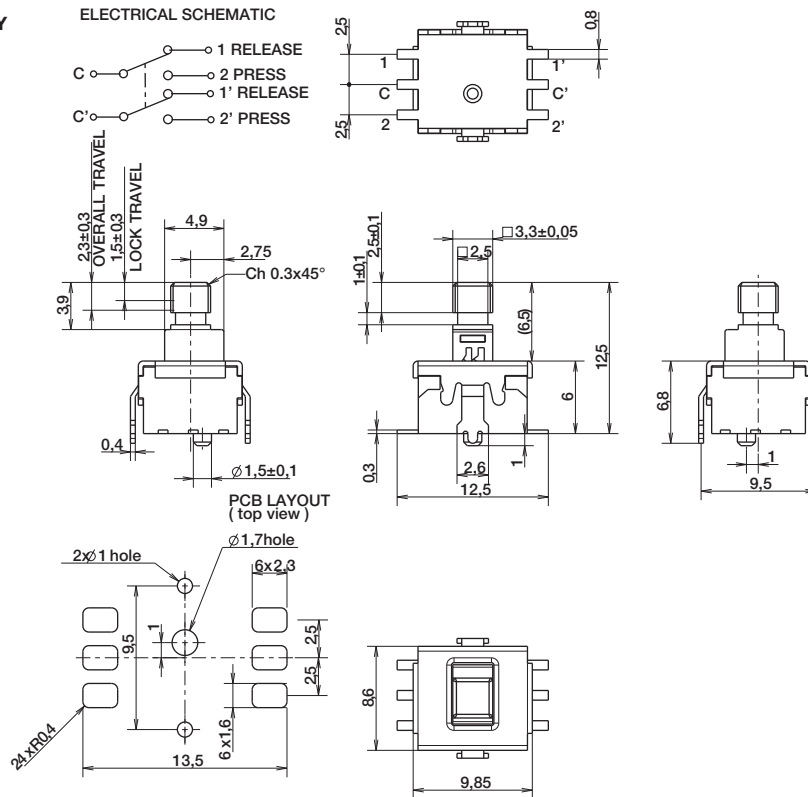


Dimensions are shown: mm  
Specifications and dimensions subject to change

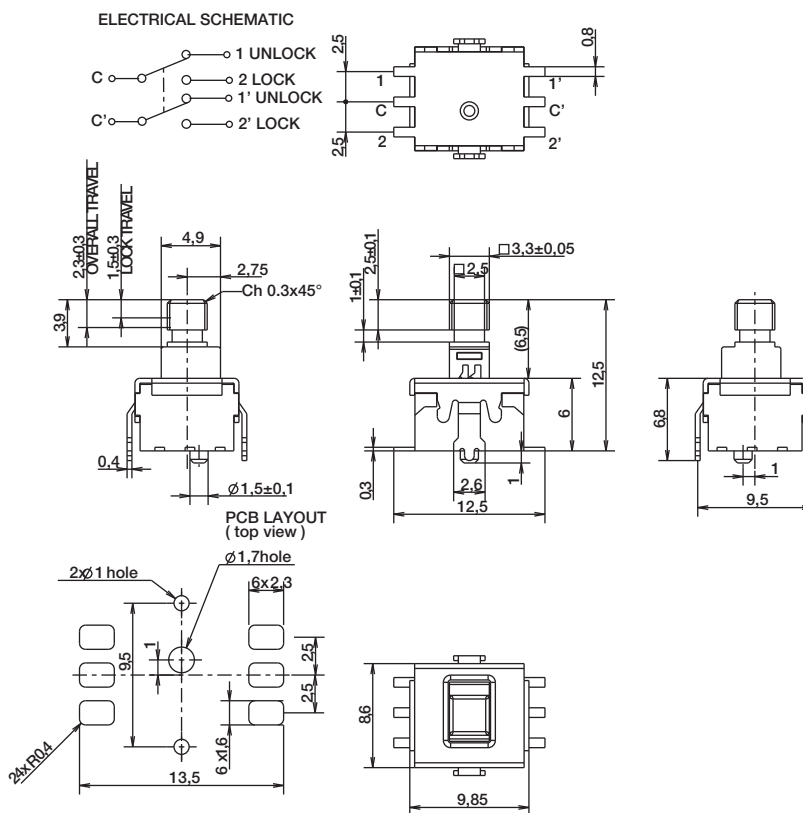


# PVB Low Profile SMT Push Switches

## PVB6 OA MOMENTARY



## PVB6 EE PUSH PUSH

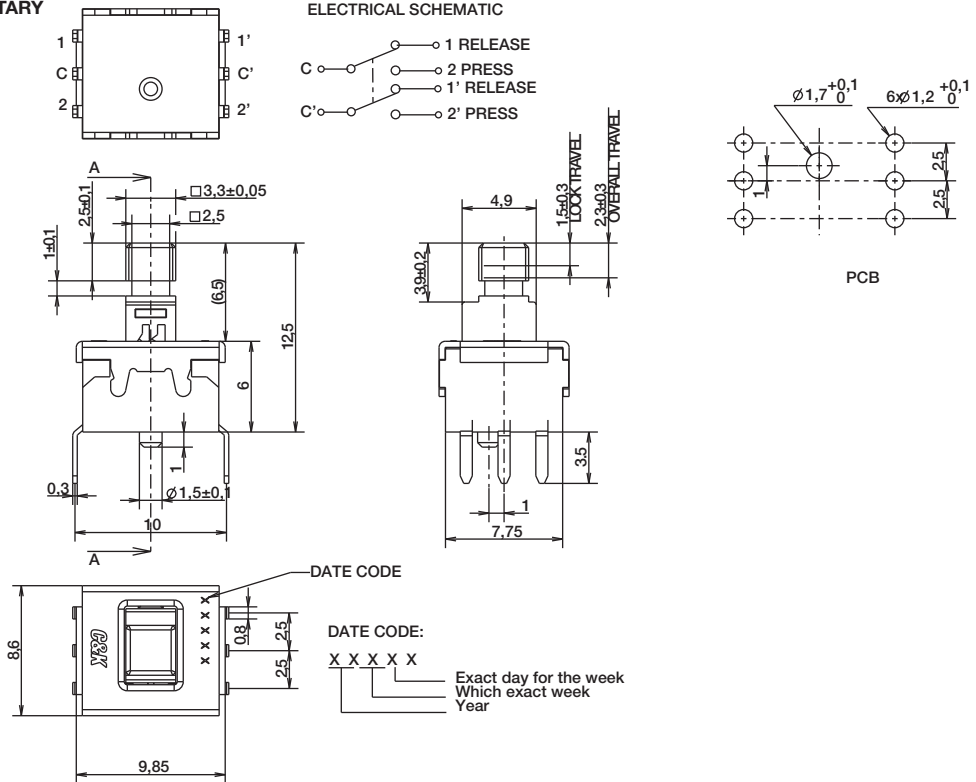


D

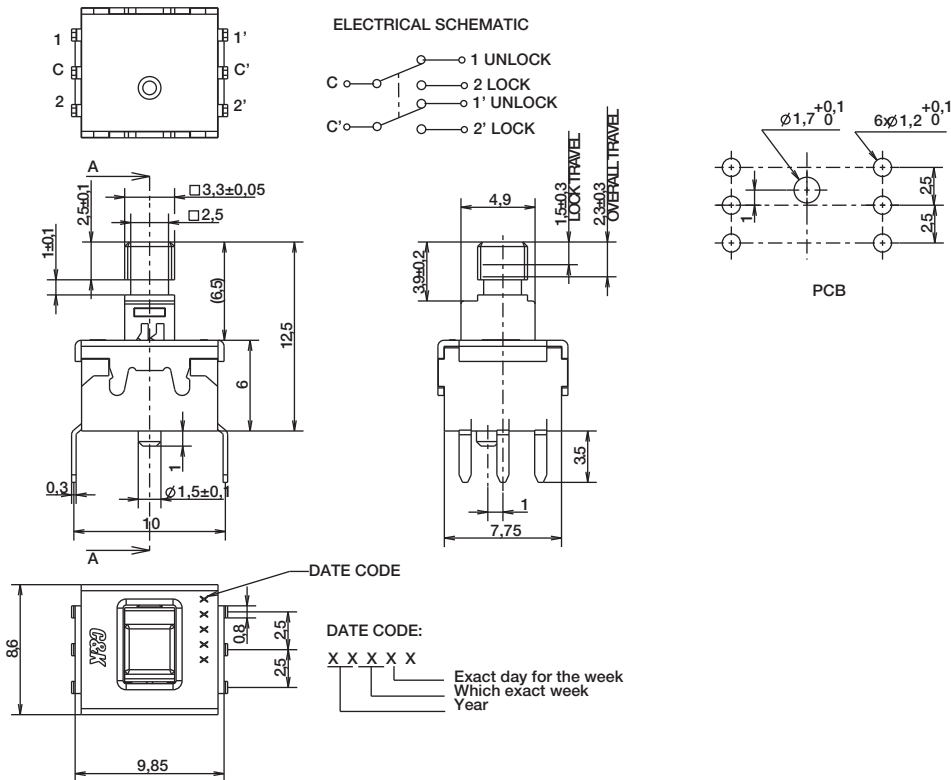
Key Switches

# PVB Low Profile Push Switches

## PVB6 THT OA MOMENTARY



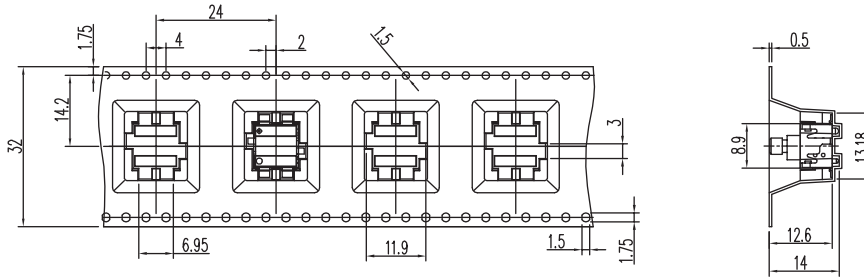
## PVB6 THT EE PUSH PUSH



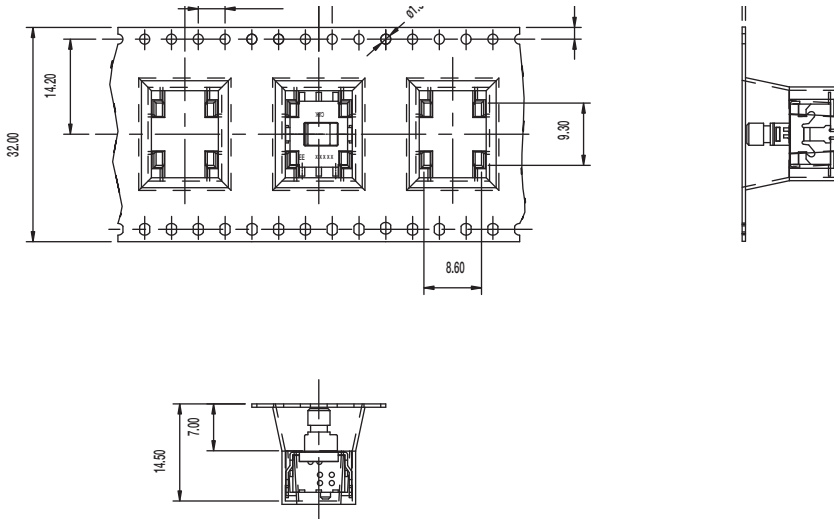
# PVB Low Profile Push Switches

## TAPE & REEL

### PVB4



### PVB6



D

Key Switches

## Looking for pricing, stock, or lifecycle information?

Click below to explore more details on WIN SOURCE:

 [View PVB4EE300NSLFS](#) on WIN SOURCE

 [C&K Components](#) Information

## Optimize Your Supply Chain with WIN SOURCE Solutions

-  Global Sourcing Solution
-  Obsolete Management
-  Cost Control Management
-  Shortage Management
-  Alternative Solution
-  Excess Inventory Management