



## 6A to 36A, 250VAC EMI Filters

### Features

- ◆ High Attenuation Wide Band Two Stage Filter
- ◆ Screw Terminals with Cover
- ◆ Low Profile, Metal Case



Last time buy - June 1, 2014

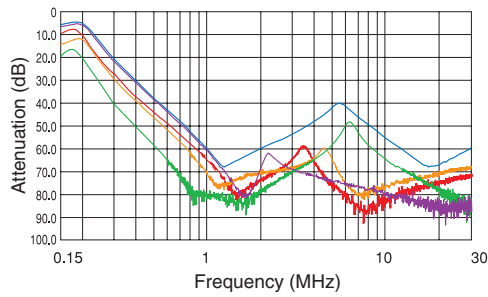
| Specifications                                  |    | MB1206  | MB1210 | MB1216 | MB1220 | MB1236 |
|---|----|---|--------|--------|--------|--------|
| Rated Voltage (AC,DC)                           | V  | 250V  |        |        |        |        |
| Rated Current (AC,DC) (1)                       | A  | 6   | 10     | 16     | 20     | 36     |
| Test Voltage (terminal to case, AC 1 min.)      | V  | 2500V (20mA) at 25°C, 70% RH  |        |        |        |        |
| Isolation Resistance (terminal to case, 500VDC) | Ω  | 100M Ohms min. at 25°C, 70% RH  |        |        |        |        |
| Leakage Current                                 | -  | 125V, 60Hz =0.5mA max.; 250V, 60Hz =1mA max.                              |        |        |        |        |
| DC Resistance                                   | mΩ | 140   | 50     | 34     | 20     | 9      |
| Temperature Rise                                | °C | 40°C max.   |        |        |        |        |
| Operating Temperature (1)                       | °C | -25 to +85°C  |        |        |        |        |
| Operating Humidity                              | %  | 30% to 95% RH (non-condensing)  |        |        |        |        |
| Storage Temperature                             | °C | -40 to +85°C  |        |        |        |        |
| Storage Humidity                                | %  | 10% to 95% RH (non-condensing)  |        |        |        |        |
| Vibration                                       | -  | Sweep:10-55-10Hz (1min.), Amplitude 1.5mm X, Y, and Z axes, 2 hours each  |        |        |        |        |
| Safety Standard                                 | -  | UL1283, CSA C22.2 No.8 (C-UL), VDE0565 Teil3, Teil3A2, and EN133200 (VDE) |        |        |        |        |

Notes:

(1) Value at Ta ≤35°C. Refer to the derating curve at Ta > 35°C.

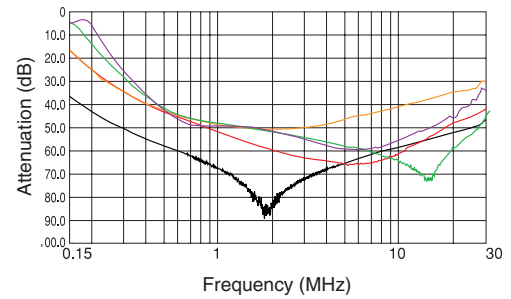
## Typ. Insertion Loss, Symmetrical

MB1206 MB1210 MB1216 MB1220 MB1236

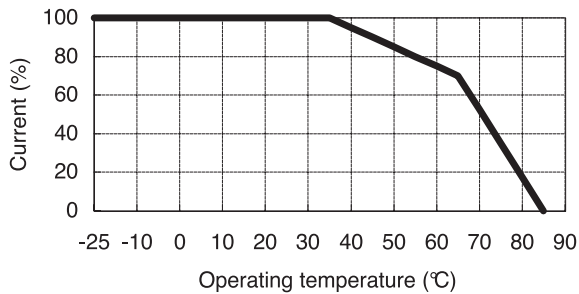


## Typ. Insertion Loss, Asymmetrical

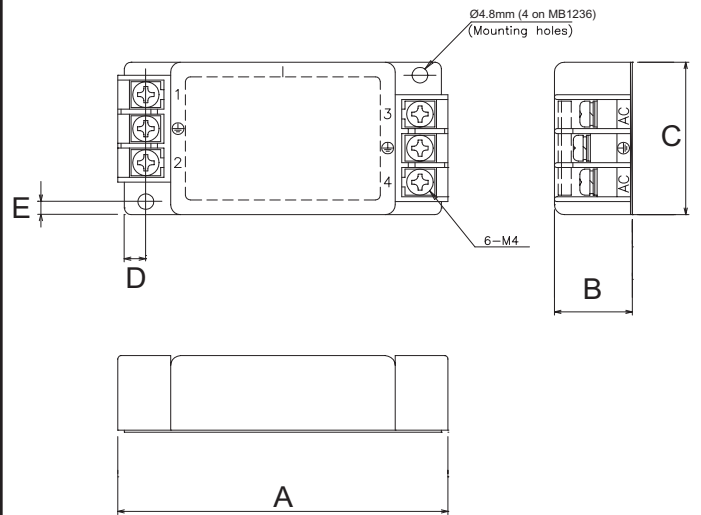
MB1206 MB1210 MB1216 MB1220 MB1236



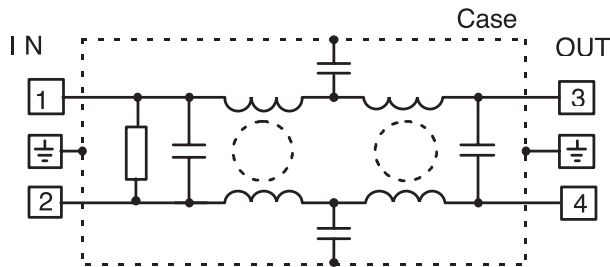
## Derating



## Outline Drawing



## Circuit



For Additional Information, please visit [us.tdk-lambda.com/lp/products/mb-series.htm](http://us.tdk-lambda.com/lp/products/mb-series.htm)



## Dimensions Table

| Model  | A   | B    | C  | D   | E   | Weight (g) |
|--------|-----|------|----|-----|-----|------------|
| MB1206 | 100 | 23.6 | 47 | 6.5 | 4   | 190        |
| MB1210 | 107 | 26   | 47 | 6.5 | 4   | 220        |
| MB1216 | 117 | 30   | 47 | 6.5 | 4   | 310        |
| MB1220 | 151 | 35   | 52 | 6.5 | 4   | 530        |
| MB1236 | 151 | 35   | 67 | 7.5 | 6.5 | 660        |

**Last time buy - June 1, 2014**

## Looking for pricing, stock, or lifecycle information?

Click below to explore more details on WIN SOURCE:

- ⊖ [View MB1206 on WIN SOURCE](#)
- ⊖ [TDK-Lambda Americas Inc. Information](#)

## Optimize Your Supply Chain with WIN SOURCE Solutions

- ✓ Global Sourcing Solution
- ✓ Obsolete Management
- ✓ Cost Control Management
- ✓ Shortage Management
- ✓ Alternative Solution
- ✓ Excess Inventory Management