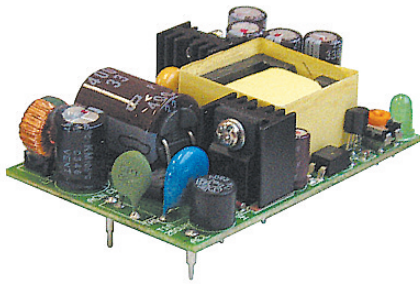




THE DATASHEET OF KPS10-24





- Small Size & Lightweight
- PCB Board Mountable
- Low Cost
- Universal Input Voltage
- RoHS Compliant

KPS Series

5 to 15W AC-DC

Board Mount Power Supplies

Key Market Segments & Applications

- Factory Automation
- Telecom
- Datacom
- Printers and motor drives
- Instruments

KPS Features and Benefits

Features

- Small Size
- Wide Input Range
- No External Components Needed

Benefits

- Minimises PCB Space
- Global use with no manual intervention
- Easy to use

Specifications		KPS-5	KPS-10	KPS-15
ITEMS	MODEL			
Input Voltage range		85 - 264VAC (47 - 440Hz) or 110 - 370VDC		
Inrush Current (115 / 230VAC)	A		20 / 40	
Input Current (115/230VAC)	A	0.13 / 0.07	0.27 / 0.13	0.4 / 0.2
Temperature Coefficient			±0.05%/°C	
Voltage Accuracy			±1%	
Minimum Load	A		None	
Load Regulation			±1% (10% to 100% load)	
Line Regulation (1)			±0.5%	
Ripple & Noise (2)	mV		1% or 50mV whichever is greater	
Short Circuit Protection	-		Continuous - hiccup mode	
Overvoltage Protection	V		130-150%	
Hold Up Time (Typ@115VAC)	ms	8	16	16
LED Indicator			Green LED = OK	
Operating Temperature			0 to +70°C with derating	
Storage Temperature			-20 to +85°C	
Humidity (non condensing)			10 - 95% RH	
Cooling			Convection	
Withstand Voltage			Input to Output 3kVAC	
Vibration (non operating)		23.52m/s ² (10 - 55Hz: constant sweep 1 min X, Y, Z for 1 hour)		
Shock		< 196.1 m/s ² (20G)		
Safety Agency Approvals	-	UL60950-1, CSA60950-1, EN60950-1 Class II, CE Mark		
Conducted & Radiated EMI		EN55022-B, FCC Class B		
Immunity		EN61000-4 -2, -3, -4, -5, -6		
Weight (Typ)	g	29g	60g	80g
Size (WxLxH; H above pcb)	mm	55 X 35 X 20	64 X 45 X 23	70 X 48 X 23
Warranty		2 Year		

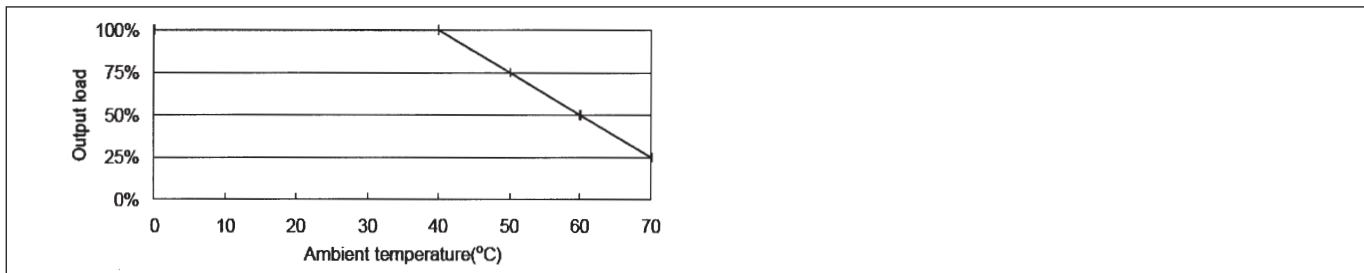
Notes:

(1) KPS-5 Measured from 100 - 240VAC (2) Measured with 0.1uF ceramic & 10uF electrolytic at 20MHz BW

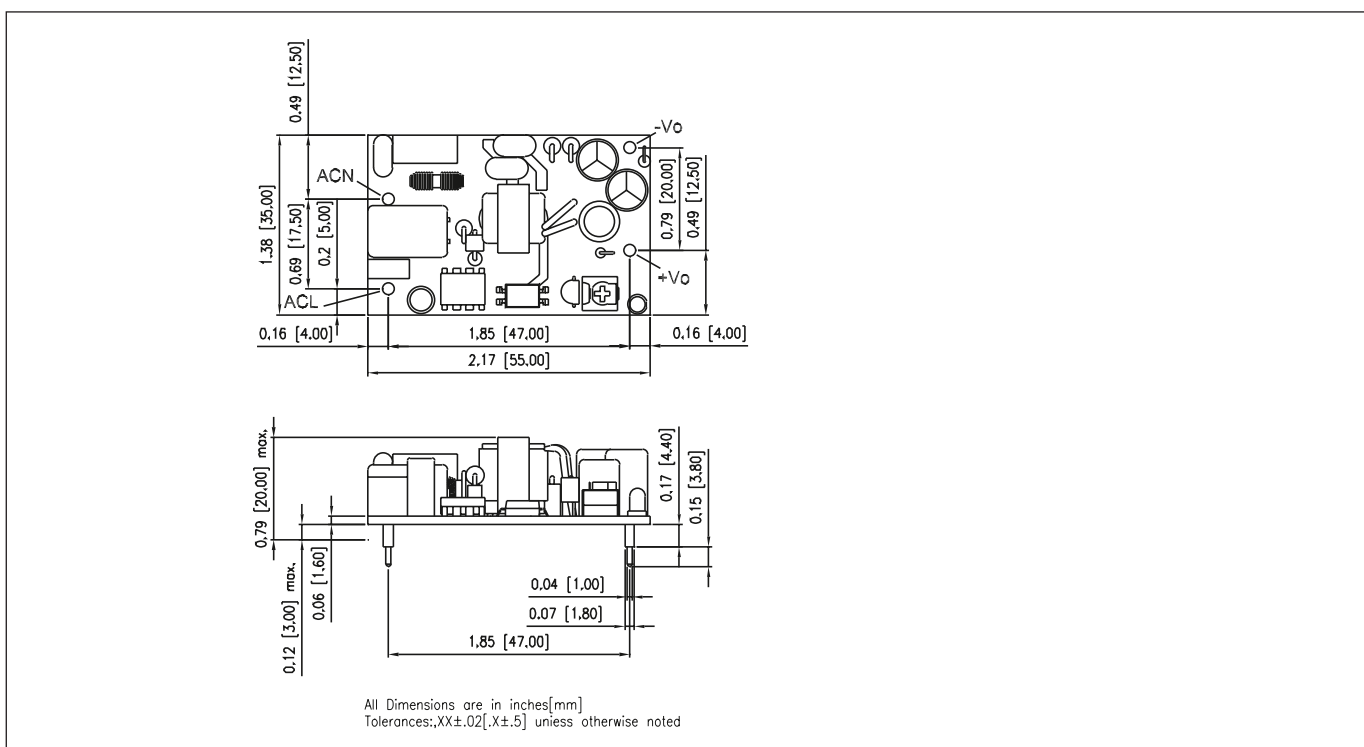
Model Selector

Model	Output Voltage (V)	Maximum Output (A)	Peak Load (A)	Output Pwr (W)	Eff (typ)%
KPS5-3R3	3.3	1.25	-	4.1	70
KPS5-5	5.0	1.00	-	5.0	70
KPS5-12	12.0	0.42	-	5.0	70
KPS5-15	15.0	0.33	-	5.0	70
KPS5-24	24.0	0.23	-	5.5	77
KPS10-3R3	3.3	2.50	3.80	8.3	65
KPS10-5	5.0	2.00	2.80	10.0	70
KPS10-12	12.0	0.84	1.20	10.1	75
KPS10-15	15.0	0.67	1.00	10.1	75
KPS10-24	24.0	0.42	0.65	10.1	78
KPS15-3R3	3.3	3.00	4.50	9.9	70
KPS15-5	5.0	3.00	4.50	15.0	73
KPS15-12	12.0	1.25	1.80	15.0	80
KPS15-15	15.0	1.00	1.50	15.0	80
KPS15-24	24.0	0.63	0.95	15.1	82

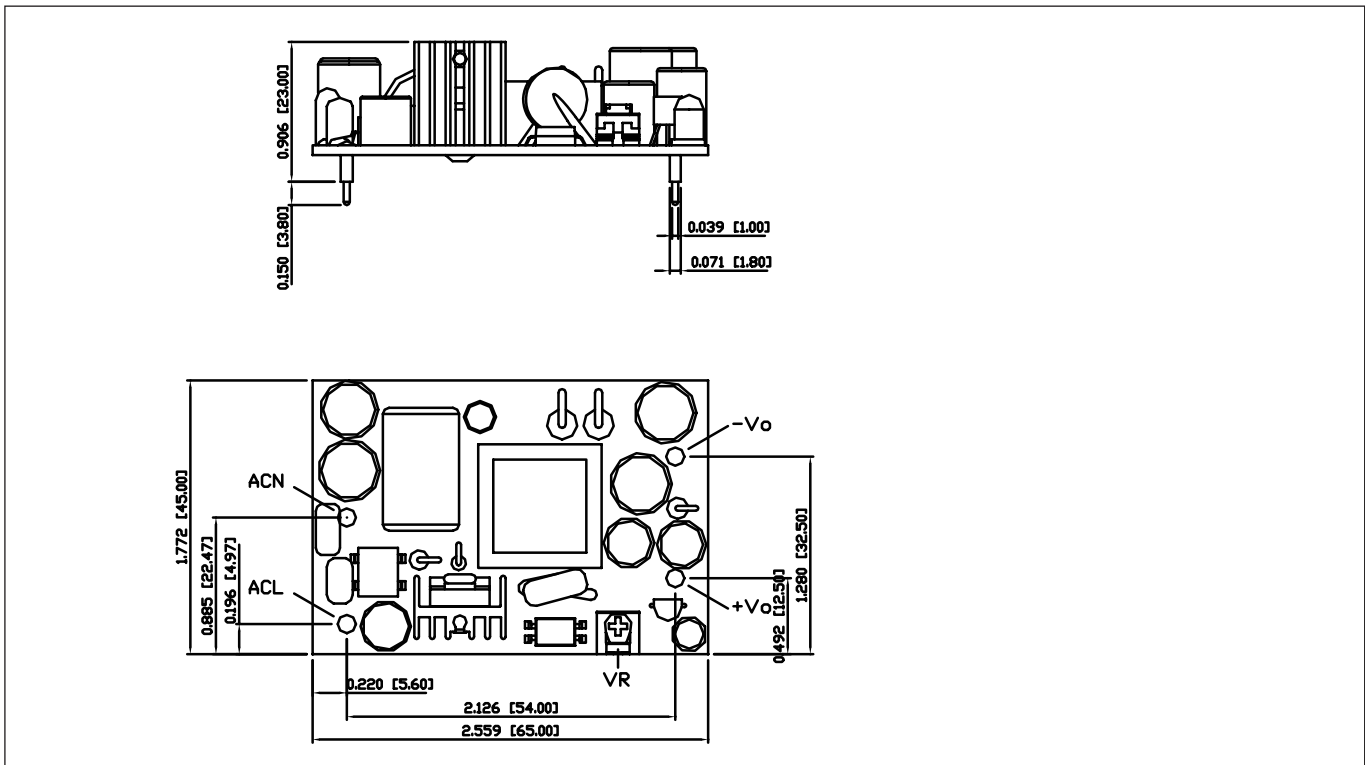
Derating Curve KPS Series



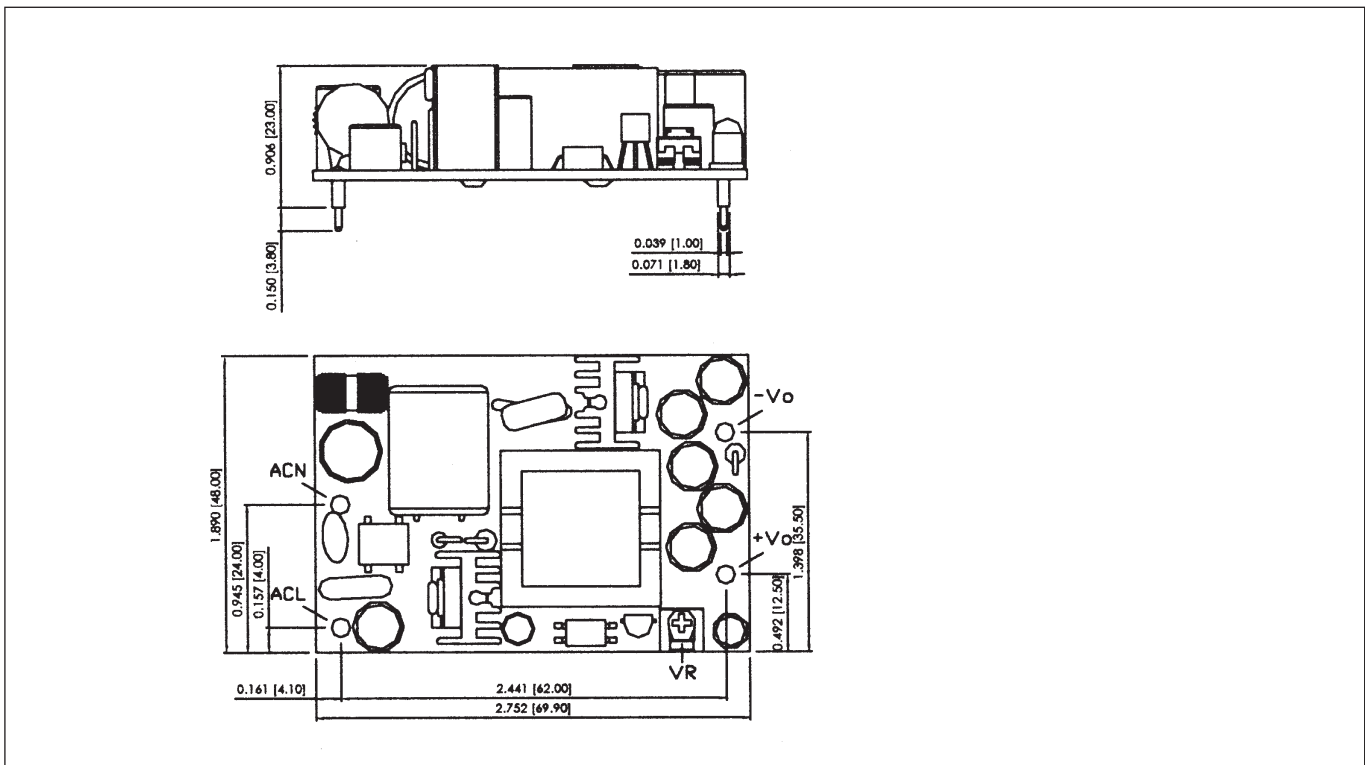
Outline Drawing KPS5 Series



Outline Drawing KPS10 Series



Outline Drawing KPS15 Series



TDK-LAMBDA EMEA

www.emea.tdk-lambda.com



TDK-Lambda France SAS

Route de Grivery
ZAC des Delaches
CS 41077
91978 Courtaboeuf Cedex
France
Tel: +33 1 60 12 71 65
Fax: +33 1 60 12 71 66
france@fr.tdk-lambda.com
www.fr.tdk-lambda.com



Italy Sales Office
Via dei Lavoratori 128/130
20092 Cinisello Balsamo (MI)
Italy
Tel: +39 02 61 29 38 63
Fax: +39 02 61 29 09 00
info.italia@it.tdk-lambda.com
www.it.tdk-lambda.com



TDK-Lambda Germany GmbH

Karl-Bold-Strasse 40
77855 Achern
Germany
Tel: +49 7841 666 0
Fax: +49 7841 5000
info.germany@de.tdk-lambda.com
www.de.tdk-lambda.com



Austria Sales Office
Aredstrasse 22
2544 Leobersdorf
Austria
Tel: +43 2256 655 84
Fax: +43 2256 645 12
info.germany@de.tdk-lambda.com
www.de.tdk-lambda.com



TDK-Lambda UK Ltd.

Kingsley Avenue
Ilfracombe
Devon EX34 8ES
United Kingdom
Tel: +44 (0) 12 71 85 66 66
Fax: +44 (0) 12 71 86 48 94
powersolutions@uk.tdk-lambda.com
www.uk.tdk-lambda.com



Nemic Lambda Ltd.

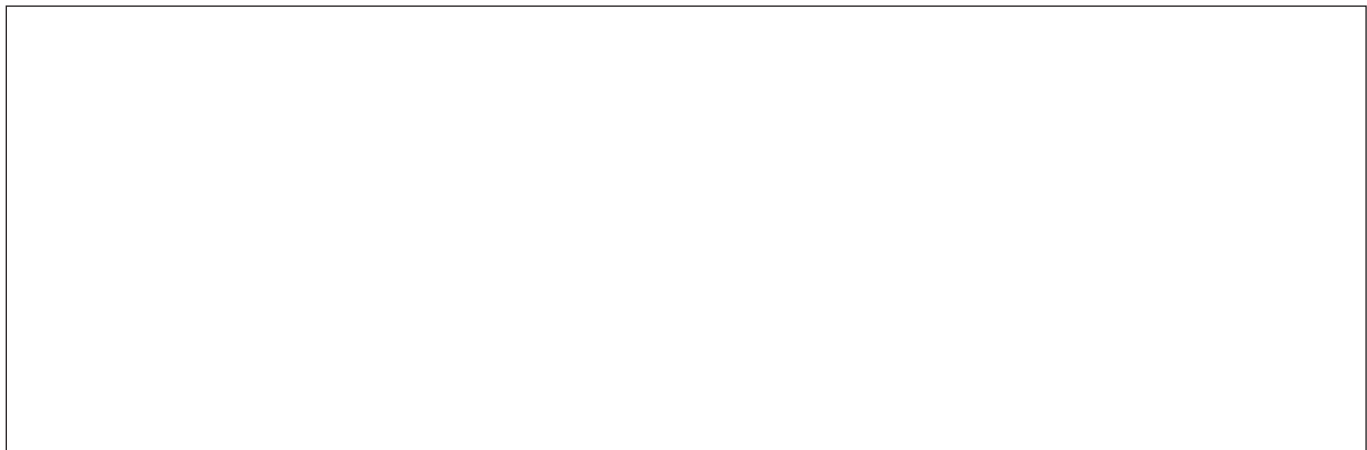
Kibbutz
Givat Hashlosha 48800
Israel
Tel: +9 723 902 4333
Fax: +9 723 902 4777
info@nemic.co.il
www.nemic.co.il



Russia



Technical Support:
St Petersburg
Tel: +7 (812) 6580463
Sales:
Moscow
Tel: +7 (499) 7557732
info@tdk-lambda.ru
www.tdk-lambda.ru

LOCAL DISTRIBUTION



Looking for pricing, stock, or lifecycle information?

Click below to explore more details on WIN SOURCE:

-  [View KPS10-24 on WIN SOURCE](#)
-  [TDK-Lambda Americas Inc. Information](#)

Optimize Your Supply Chain with WIN SOURCE Solutions

-  Global Sourcing Solution
-  Obsolete Management
-  Cost Control Management
-  Shortage Management
-  Alternative Solution
-  Excess Inventory Management