





Quality Products. Service Excellence.

## Low Voltage/Filament - Economical Single Primary - 0.63 VA to 288 VA 166 Series

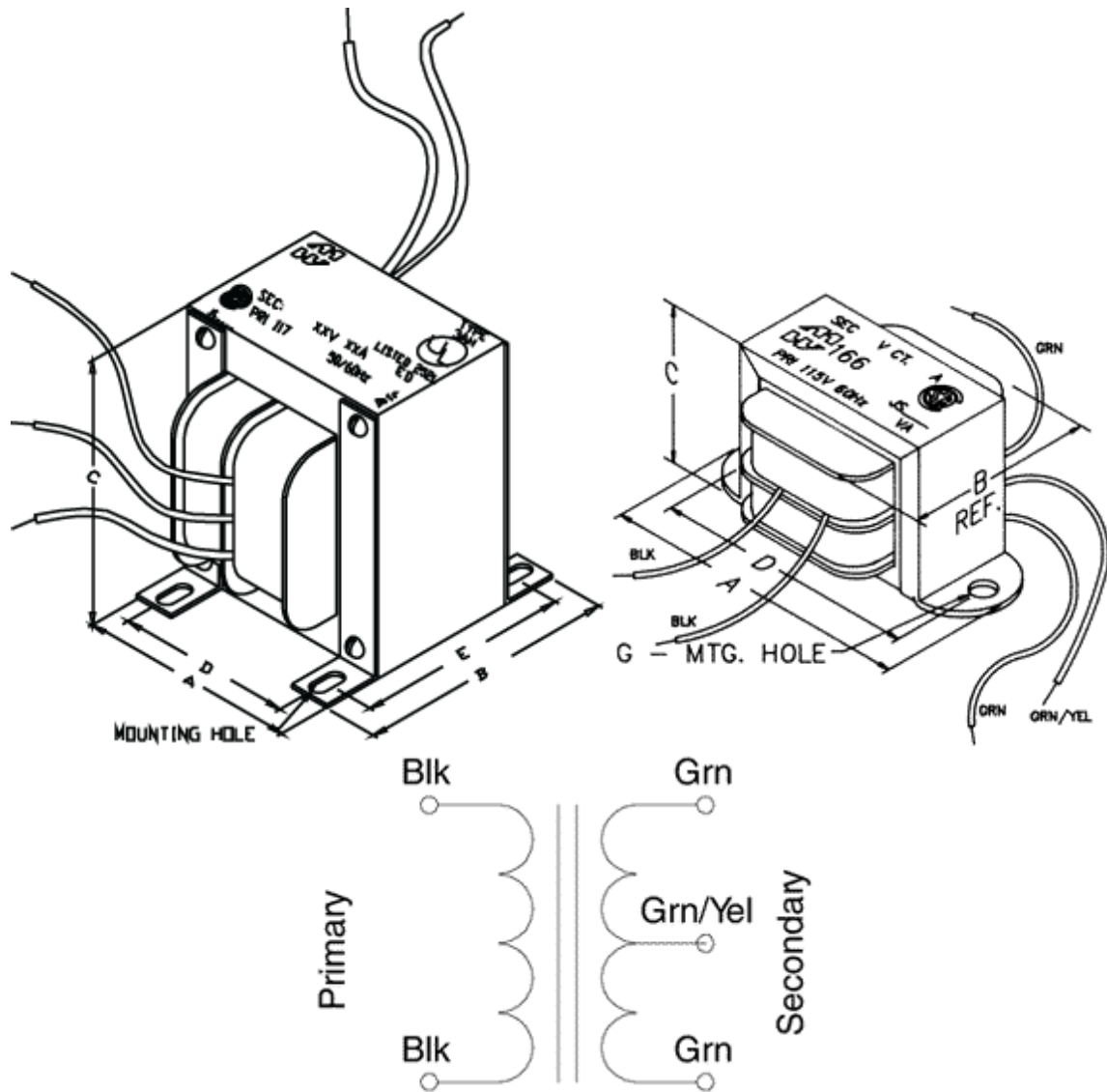
Open Style, Chassis Mount - 115 V Primary

### Features



- Economical single primary 115 VAC, 60 Hz. (or 117 50/60 Hz. see table) - (If you require 117/234 or 50/60 Hz. operation or dual secondaries check out our versatile **266 Series**.)
- Most secondaries are center tapped (C.T.), VAC (RMS) - see table for details.
- Open style, channel bracket, two hole chassis mount.
- Minimum 6" long leads.
- Dual bobbin design - no electrostatic shield required.
- We use Class B insulation (130 degrees, C) for extra protection - UL listed as a Class A (105 degree, C) design
- Hi-Pot test of 2,000V RMS.
- UL listed.
- CSA certified.





| Part No. | VA   | Primary (VAC)  | Secondary (R.M.S.) |      | Overall Dimensions |      |      |      |      | Mounting Dimensions | Ref |
|----------|------|----------------|--------------------|------|--------------------|------|------|------|------|---------------------|-----|
|          |      |                | VAC                | Amps | A                  | B    | C    | D    | E    |                     |     |
| 166S2    | 25   | 115V 60 Hz.    | 2.5 C.T.           | 10   | 3.69               | 2.00 | 2.31 | 3.13 | 0.19 | C                   |     |
| 166F2    | 0.63 | 115V 60 Hz.    | 2.5 C.T.           | 0.25 | 2.06               | 1.25 | 1.19 | 1.75 | 0.19 | C                   |     |
| 166G2    | 1.25 | 115V 60 Hz.    | 2.5 C.T.           | 0.5  | 2.06               | 1.25 | 1.19 | 1.75 | 0.19 | C                   |     |
| 166J2    | 2.5  | 115V 60 Hz.    | 2.5 C.T.           | 1    | 2.06               | 1.38 | 1.19 | 1.75 | 0.19 | C                   |     |
| 166K2    | 3.75 | 115V 60 Hz.    | 2.5 C.T.           | 1.5  | 2.38               | 1.38 | 1.38 | 2.00 | 0.19 | C                   |     |
| 166L2    | 6.25 | 115V 60 Hz.    | 2.5 C.T.           | 2.5  | 2.81               | 1.50 | 1.69 | 2.38 | 0.19 | C                   |     |
| 166M2    | 7.5  | 115V 60 Hz.    | 2.5 C.T.           | 3    | 2.81               | 1.50 | 1.69 | 2.38 | 0.19 | C                   |     |
| 166Q2    | 15   | 115V 60 Hz.    | 2.5 C.T.           | 6    | 3.25               | 1.63 | 2.00 | 2.81 | 0.19 | C                   |     |
| 166R5    | 40   | 115V 60 Hz.    | 5 C.T.             | 8    | 3.69               | 2.00 | 2.31 | 3.13 | 0.19 | C                   |     |
| 166S5    | 50   | 115V 60 Hz.    | 5 C.T.             | 10   | 3.69               | 2.13 | 2.31 | 3.13 | 0.19 | C                   |     |
| 166U5    | 75   | 115V 60 Hz.    | 5 C.T.             | 15   | 4.03               | 2.25 | 2.63 | 3.56 | 0.19 | C                   |     |
| 166RS    | 40   | 115V 60 Hz.    | 5 C.T.             | 8    | 4.50               | 2.50 | 3.00 | 4.00 | 0.20 | C                   |     |
| 166V5    | 100  | 115V 60 Hz.    | 5 C.T.             | 20   | 4.50               | 2.50 | 3.00 | 4.00 | 0.20 | C                   |     |
| 166F5    | 1.25 | 115V 60 Hz.    | 5 C.T.             | 0.25 | 2.06               | 1.25 | 1.19 | 1.75 | 0.19 | C                   |     |
| 166G5    | 2.5  | 115V 60 Hz.    | 5 C.T.             | 0.5  | 2.06               | 1.38 | 1.19 | 1.75 | 0.19 | C                   |     |
| 166J5    | 5    | 115V 60 Hz.    | 5 C.T.             | 1    | 2.38               | 1.50 | 1.38 | 2.00 | 0.19 | C                   |     |
| 166L5    | 10   | 115V 60 Hz.    | 5 C.T.             | 2    | 2.81               | 1.63 | 1.69 | 2.38 | 0.19 | C                   |     |
| 166MS    | 15   | 115V 60 Hz.    | 5 C.T.             | 3    | 3.25               | 1.75 | 2.00 | 2.81 | 0.19 | C                   |     |
| 166M6    | 18.9 | 117V 50/60 Hz. | 6.3 C.T.           | 3    | 3.25               | 2.00 | 2.00 | 2.81 | 0.19 | C                   |     |
| 166Q6    | 37.8 | 115V 60 Hz.    | 6.3 C.T.           | 6    | 3.69               | 2.00 | 2.31 | 3.13 | 0.19 | C                   |     |
| 166S6    | 63   | 115V 60 Hz.    | 6.3 C.T.           | 10   | 4.03               | 2.25 | 2.63 | 3.56 | 0.19 | C                   |     |

| Part No. | VA    | Primary        | Secondary (R.M.S.) |       | Overall Dimensions |      |      |      |      | Mounting   | Ref |
|----------|-------|----------------|--------------------|-------|--------------------|------|------|------|------|------------|-----|
|          |       | (VAC)          | VAC                | Amps  | A                  | B    | C    | D    | E    | Dimensions |     |
| 166E6    | 0.95  | 115V 60 Hz.    | 6.3 C.T.           | 0.15  | 2.06               | 1.25 | 1.19 | 1.75 | 0.19 | C          |     |
| 166F6    | 1.89  | 115V 60 Hz.    | 6.3 C.T.           | 0.3   | 2.06               | 1.38 | 1.19 | 1.75 | 0.19 | C          |     |
| 166G6    | 3.78  | 115V 60 Hz.    | 6.3 C.T.           | 0.6   | 2.38               | 1.38 | 1.38 | 2.00 | 0.19 | C          |     |
| 166G6B   | 3.78  | 117V 50/60 Hz. | 6.3 C.T.           | 0.6   | 2.38               | 1.38 | 1.38 | 2.00 | 0.19 | C          |     |
| 166J6    | 6.3   | 115V 60 Hz.    | 6.3 C.T.           | 1     | 2.81               | 1.50 | 1.69 | 2.38 | 0.19 | C          |     |
| 166K6    | 7.56  | 115V 60 Hz.    | 6.3 C.T.           | 1.2   | 2.81               | 1.50 | 1.69 | 2.38 | 0.19 | C          |     |
| 166K6B   | 7.56  | 117V 50/60 Hz. | 6.3 C.T.           | 1.2   | 2.81               | 1.50 | 1.69 | 2.38 | 0.19 | C          |     |
| 166L6    | 12.6  | 115V 60 Hz.    | 6.3 C.T.           | 2     | 2.81               | 1.63 | 1.69 | 2.38 | 0.19 | C          |     |
| 166N6    | 25.2  | 115V 60 Hz.    | 6.3 C.T.           | 4     | 3.25               | 1.75 | 2.00 | 2.81 | 0.19 | C          |     |
| 166G7    | 4.9   | 115V 60 Hz.    | 7 C.T.             | 0.7   | 2.38               | 1.50 | 1.38 | 2.00 | 0.19 | C          |     |
| 166U7    | 112.5 | 115V 60 Hz.    | 7.5 C.T.           | 15    | 4.50               | 2.50 | 3.00 | 4.00 | 0.20 | C          |     |
| 166G8    | 4     | 115V 60 Hz.    | 8 C.T.             | 0.5   | 2.38               | 1.38 | 1.38 | 2.00 | 0.19 | C          |     |
| 166N8    | 34    | 115V 60 Hz.    | 8.5 C.T.           | 4     | 3.25               | 2.00 | 2.00 | 2.81 | 0.19 | C          |     |
| 166J8    | 8.5   | 115V 60 Hz.    | 8.5 C.T.           | 1     | 2.81               | 1.50 | 1.69 | 2.38 | 0.19 | C          |     |
| 166L8    | 17    | 115V 60 Hz.    | 8.5 C.T.           | 2     | 3.25               | 1.63 | 2.00 | 2.81 | 0.19 | C          |     |
| 166M8    | 25.5  | 115V 60 Hz.    | 8.5 C.T.           | 3     | 3.25               | 1.75 | 2.00 | 2.81 | 0.19 | C          |     |
| 166G9    | 4.5   | 115V 60 Hz.    | 9 C.T.             | 0.5   | 2.38               | 1.38 | 1.38 | 2.00 | 0.19 | C          |     |
| 166M10   | 30    | 115V 60 Hz.    | 10 C.T.            | 3     | 3.25               | 2.00 | 2.00 | 2.81 | 0.19 | C          |     |
| 166N10   | 40    | 115V 60 Hz.    | 10 C.T.            | 4     | 3.69               | 2.00 | 2.31 | 3.13 | 0.19 | C          |     |
| 166P10   | 50    | 115V 60 Hz.    | 10 C.T.            | 5     | 3.69               | 2.13 | 2.31 | 3.13 | 0.19 | C          |     |
| 166R10   | 80    | 115V 60 Hz.    | 10 C.T.            | 8     | 4.03               | 2.50 | 2.63 | 3.56 | 0.19 | C          |     |
| 166S10   | 100   | 115V 60 Hz.    | 10 C.T.            | 10    | 4.50               | 2.50 | 3.00 | 4.00 | 0.20 | C          |     |
| 166F10   | 3     | 115V 60 Hz.    | 10 C.T.            | 0.3   | 2.06               | 1.38 | 1.19 | 1.75 | 0.19 | C          |     |
| 166G10   | 5     | 115V 60 Hz.    | 10 C.T.            | 0.5   | 2.38               | 1.50 | 1.38 | 2.00 | 0.19 | C          |     |
| 166J10   | 10    | 115V 60 Hz.    | 10 C.T.            | 1     | 2.81               | 1.63 | 1.69 | 2.38 | 0.19 | C          |     |
| 166L10   | 20    | 115V 60 Hz.    | 10 C.T.            | 2     | 3.25               | 1.75 | 2.00 | 2.81 | 0.19 | C          |     |
| 166P11   | 55    | 115V 60 Hz.    | 11 C.T.            | 5     | 3.69               | 2.13 | 2.31 | 3.13 | 0.19 | C          |     |
| 166S11   | 110   | 115V 60 Hz.    | 11 C.T.            | 10    | 4.50               | 2.50 | 3.00 | 4.00 | 0.20 | C          |     |
| 166C12   | 0.63  | 115V 60 Hz.    | 6.3/12.6 C.T.      | .1/05 | 2.06               | 1.25 | 1.19 | 1.75 | 0.19 | C          |     |
| 166N12B  | 48    | 117V 50/60 Hz. | 12 C.T.            | 4     | 3.69               | 2.00 | 2.31 | 3.13 | 0.19 | C          |     |
| 166E12   | 1.8   | 115V 60 Hz.    | 12 C.T.            | 0.15  | 2.06               | 1.38 | 1.19 | 1.75 | 0.19 | C          |     |
| 166F12B  | 3.6   | 115V 60 Hz.    | 12 C.T.            | 0.3   | 2.38               | 1.38 | 1.38 | 2.00 | 0.19 | C          |     |
| 166F12C  | 4.2   | 115V 60 Hz.    | 12 C.T.            | 0.35  | 2.38               | 1.38 | 1.38 | 2.00 | 0.19 | C          |     |
| 166F12D  | 4.2   | 117V 50/60 Hz. | 12                 | 0.35  | 2.38               | 1.38 | 1.38 | 2.00 | 0.19 | C          |     |
| 166GD12  | 8.4   | 117V 50/60 Hz. | 12                 | 0.7   | 2.81               | 1.63 | 1.69 | 2.38 | 0.19 | C          |     |
| 166JA12  | 12    | 115V 60 Hz.    | 12 C.T.            | 1     | 2.81               | 1.63 | 1.69 | 2.38 | 0.19 | C          |     |
| 166K12   | 14.4  | 115V 60 Hz.    | 12 C.T.            | 1.2   | 3.25               | 1.63 | 2.00 | 2.81 | 0.19 | C          |     |
| 166JB12  | 14.4  | 117V 50/60 Hz. | 12                 | 1.2   | 3.25               | 1.75 | 2.00 | 2.81 | 0.19 | C          |     |
| 166LA12  | 24    | 115V 60 Hz.    | 12 C.T.            | 2     | 3.25               | 1.75 | 2.00 | 2.81 | 0.19 | C          |     |
| 166K12B  | 18.9  | 117V 50/60 Hz. | 12.6 C.T.          | 1.5   | 3.25               | 2.00 | 2.00 | 2.81 | 0.19 | C          |     |
| 166L12B  | 25.2  | 117V 50/60 Hz. | 12.6 C.T.          | 2     | 3.25               | 2.00 | 2.00 | 2.81 | 0.19 | C          |     |
| 166L12   | 31.5  | 115V 60 Hz.    | 12.6 C.T.          | 2.5   | 3.25               | 2.00 | 2.00 | 2.81 | 0.19 | C          |     |
| 166M12B  | 37.8  | 117V 50/60 Hz. | 12.6 C.T.          | 3     | 3.69               | 2.13 | 2.31 | 3.13 | 0.19 | C          |     |
| 166N12   | 50.4  | 115V 60 Hz.    | 12.6 C.T.          | 4     | 3.69               | 2.13 | 2.31 | 3.13 | 0.19 | C          |     |
| 166Q12   | 75.6  | 115V 60 Hz.    | 12.6 C.T.          | 6     | 4.03               | 2.25 | 2.63 | 3.56 | 0.19 | C          |     |
| 166R12   | 100.8 | 115V 60 Hz.    | 12.6 C.T.          | 8     | 4.50               | 2.50 | 3.00 | 4.00 | 0.20 | C          |     |
| 166F12   | 3.78  | 115V 60 Hz.    | 12.6 C.T.          | 0.3   | 2.38               | 1.38 | 1.38 | 2.00 | 0.19 | C          |     |
| 166G12   | 6.3   | 115V 60 Hz.    | 12.6 C.T.          | 0.5   | 2.81               | 1.50 | 1.69 | 2.38 | 0.19 | C          |     |
| 166J12   | 12.6  | 115V 60 Hz.    | 12.6 C.T.          | 1     | 2.81               | 1.63 | 1.69 | 2.38 | 0.19 | C          |     |
| 166J12B  | 12.6  | 117V 50/60 Hz. | 12.6 C.T.          | 1     | 3.25               | 1.75 | 2.00 | 2.81 | 0.19 | C          |     |
| 166L14   | 28    | 115V 60 Hz.    | 14 C.T.            | 2     | 3.25               | 2.00 | 2.00 | 2.81 | 0.19 | C          |     |
| 166Q14   | 84    | 115V 60 Hz.    | 14 C.T.            | 6     | 4.03               | 2.50 | 2.63 | 3.56 | 0.19 | C          |     |
| 166F14   | 3.5   | 115V 50/60 Hz. | 14 C.T.            | 0.25  | 2.38               | 1.35 | 1.43 | 2.00 | 0.19 | C          |     |
| 166E14   | 2.1   | 115V 60 Hz.    | 14 C.T.            | 0.15  | 2.06               | 1.38 | 1.19 | 1.75 | 0.19 | C          |     |
| 166G14   | 7     | 115V 60 Hz.    | 14 C.T.            | 0.5   | 2.81               | 1.50 | 1.69 | 2.38 | 0.19 | C          |     |

| Part No. | VA   | Primary        | Secondary (R.M.S.) |          | Overall Dimensions |      |      |      |      | Mounting   |      |   |
|----------|------|----------------|--------------------|----------|--------------------|------|------|------|------|------------|------|---|
|          |      | (VAC)          | VAC                | Amps     | A                  | B    | C    | D    | E    | Dimensions | Ref  |   |
| 166J14   | 14   | 115V 60 Hz.    | 14 C.T.            | 1        | 2.81               | 1.63 | 1.69 | 2.38 |      | 0.19       | C    |   |
| 166L16   | 35.2 | 115V 60 Hz.    | 16 C.T.            | 2.2      | 3.25               | 2.00 | 2.00 | 2.81 |      | 0.19       | C    |   |
| 166M16   | 48   | 115V 60 Hz.    | 16 C.T.            | 3        | 3.69               | 2.13 | 2.31 | 3.13 |      | 0.19       | C    |   |
| 166F16   | 4    | 115V 60 Hz.    | 16 C.T.            | 0.25     | 2.38               | 1.38 | 1.38 | 2.00 |      | 0.19       | C    |   |
| 166G16   | 8    | 115V 60 Hz.    | 16 C.T.            | 0.5      | 2.81               | 1.50 | 1.69 | 2.38 |      | 0.19       | C    |   |
| 166J16   | 16   | 115V 60 Hz.    | 16 C.T.            | 1        | 3.25               | 1.63 | 2.00 | 2.81 |      | 0.19       | C    |   |
| 166B18   | 0.54 | 115V 60 Hz.    | 9/18 C.T.          | .06/.03  | 2.06               | 1.25 | 1.19 | 1.75 |      | 0.19       | C    |   |
| 166J18   | 18   | 115V 50/60 Hz. | 18 C.T.            | 1        | 3.25               | 2.00 | 2.00 | 2.81 |      | 0.19       | C    |   |
| 166L18   | 36   | 115V 50/60 Hz. | 18 C.T.            | 2        | 3.69               | 2.13 | 2.31 | 3.13 |      | 0.19       | C    |   |
| 166M18   | 54   | 115V 60 Hz.    | 18 C.T.            | 3        | 3.69               | 2.13 | 2.31 | 3.13 |      | 0.19       | C    |   |
| 166N18   | 72   | 115V 60 Hz.    | 18 C.T.            | 4        | 4.03               | 2.25 | 2.63 | 3.56 |      | 0.19       | C    |   |
| 166P18   | 90   | 115V 60 Hz.    | 18 C.T.            | 5        | 4.03               | 2.50 | 2.63 | 3.56 |      | 0.19       | C    |   |
| 166E18   | 5.4  | 115V 60 Hz.    | 18 C.T.            | 0.3      | 2.38               | 1.50 | 1.38 | 2.00 |      | 0.19       | C    |   |
| 166K18   | 27   | 115V 60 Hz.    | 18 C.T.            | 1.5      | 3.25               | 1.75 | 2.00 | 2.81 |      | 0.19       | C    |   |
| 166L20   | 40   | 115V 60 Hz.    | 20 C.T.            | 2        | 3.69               | 1.88 | 2.31 | 3.13 |      | 0.19       | C    |   |
| 166D20   | 2    | 115V 60 Hz.    | 20 C.T.            | 0.1      | 2.06               | 1.38 | 1.19 | 1.75 |      | 0.19       | C    |   |
| 166E20   | 3    | 115V 60 Hz.    | 20 C.T.            | 0.15     | 2.06               | 1.38 | 1.19 | 1.75 |      | 0.19       | C    |   |
| 166F20   | 6    | 115V 60 Hz.    | 20 C.T.            | 0.3      | 2.38               | 1.50 | 1.38 | 2.00 |      | 0.19       | C    |   |
| 166G20   | 10   | 115V 60 Hz.    | 20 C.T.            | 0.5      | 2.81               | 1.63 | 1.69 | 2.38 |      | 0.19       | C    |   |
| 166J20   | 20   | 115V 60 Hz.    | 20 C.T.            | 1        | 3.25               | 1.75 | 2.00 | 2.81 |      | 0.19       | C    |   |
| 166L22   | 44   | 115V 60 Hz.    | 22 C.T.            | 2        | 3.69               | 2.13 | 2.31 | 3.13 |      | 0.19       | C    |   |
| 166A24   | 0.63 | 115V 60 Hz.    | 12.6/25.2 C.T.     | .05/.025 | 2.06               | 1.25 | 1.19 | 1.75 |      | 0.19       | C    |   |
| 166T24   | 288  | 117V 50/60 Hz. | 24 C.T.            | 12       | 3.75               | 3.60 | 4.63 | 3.00 | 3.00 | 0.20       | 0.38 | B |
| 166J24   | 24   | 117V 50/60 Hz. | 24                 | 1        | 3.25               | 2.00 | 2.00 | 2.81 |      | 0.19       | C    |   |
| 166L24   | 48   | 115V 60 Hz.    | 24 C.T.            | 2        | 3.69               | 2.13 | 2.31 | 3.13 |      | 0.19       | C    |   |
| 166M24   | 72   | 115V 60 Hz.    | 24 C.T.            | 3        | 4.03               | 2.25 | 2.63 | 3.56 |      | 0.19       | C    |   |
| 166N24   | 96   | 115V 60 Hz.    | 24 C.T.            | 4        | 4.50               | 2.50 | 3.00 | 4.00 |      | 0.20       | C    |   |
| 166C24   | 2.04 | 115V 60 Hz.    | 24 C.T.            | 0.085    | 2.06               | 1.38 | 1.19 | 1.75 |      | 0.19       | C    |   |
| 166EA24  | 4.8  | 115V 60 Hz.    | 24 C.T.            | 0.2      | 2.38               | 1.50 | 1.38 | 2.00 |      | 0.19       | C    |   |
| 166FB24  | 9.6  | 117V 50/60 Hz. | 24 C.T.            | 0.4      | 2.81               | 1.63 | 1.69 | 2.38 |      | 0.19       | C    |   |
| 166GD24B | 16.8 | 117V 50/60 Hz. | 24 C.T.            | 0.7      | 3.25               | 1.75 | 2.00 | 2.81 |      | 0.19       | C    |   |
| 166JB24  | 24   | 115V 60 Hz.    | 24 C.T.            | 1        | 3.25               | 1.75 | 2.00 | 2.81 |      | 0.19       | C    |   |
| 166J25B  | 25   | 117V 50/60 Hz. | 25 C.T.            | 1        | 3.25               | 2.00 | 2.00 | 2.81 |      | 0.19       | C    |   |
| 166K25   | 37.5 | 115V 60 Hz.    | 25 C.T.            | 1.5      | 3.69               | 1.88 | 2.31 | 3.13 |      | 0.19       | C    |   |
| 166L25   | 50   | 115V 60 Hz.    | 25 C.T.            | 2        | 3.69               | 2.13 | 2.31 | 3.13 |      | 0.19       | C    |   |
| 166M25   | 75   | 115V 60 Hz.    | 25 C.T.            | 3        | 4.03               | 2.25 | 2.63 | 3.56 |      | 0.19       | C    |   |
| 166D25   | 2.5  | 115V 60 Hz.    | 25 C.T.            | 0.1      | 2.06               | 1.38 | 1.19 | 1.75 |      | 0.19       | C    |   |
| 166E25   | 3.75 | 115V 60 Hz.    | 25 C.T.            | 0.15     | 2.38               | 1.38 | 1.38 | 2.00 |      | 0.19       | C    |   |
| 166F25   | 7.5  | 115V 60 Hz.    | 25 C.T.            | 0.3      | 2.81               | 1.50 | 1.69 | 2.38 |      | 0.19       | C    |   |
| 166G25   | 12.5 | 115V 60 Hz.    | 25 C.T.            | 0.5      | 2.81               | 1.63 | 1.69 | 2.38 |      | 0.19       | C    |   |
| 166J25C  | 25   | 117V 50/60 Hz. | 25                 | 1        | 3.25               | 2.00 | 2.00 | 2.38 |      | 0.19       | C    |   |
| 166J25   | 25   | 115V 60 Hz.    | 25 C.T.            | 1        | 3.25               | 1.75 | 2.00 | 2.81 |      | 0.19       | C    |   |
| 166L25B  | 50.4 | 115V 50/60 Hz. | 25.2 C.T.          | 2        | 4.03               | 2.25 | 2.63 | 3.56 |      | 0.19       | C    |   |
| 166J28   | 28   | 115V 60 Hz.    | 28 C.T.            | 1        | 3.25               | 2.00 | 2.00 | 2.81 |      | 0.19       | C    |   |
| 166L28   | 56   | 115V 60 Hz.    | 28 C.T.            | 2        | 3.69               | 2.13 | 2.31 | 3.13 |      | 0.19       | C    |   |
| 166F28   | 7    | 115V 60 Hz.    | 28 C.T.            | 0.25     | 2.81               | 1.50 | 1.69 | 2.38 |      | 0.19       | C    |   |
| 166G28   | 14   | 115V 60 Hz.    | 28 C.T.            | 0.5      | 2.81               | 1.63 | 1.69 | 2.38 |      | 0.19       | C    |   |
| 166E30   | 4.5  | 115V 60 Hz.    | 30 C.T.            | 0.15     | 2.38               | 1.38 | 1.38 | 2.00 |      | 0.19       | C    |   |
| 166F30   | 7.5  | 115V 60 Hz.    | 30 C.T.            | 0.25     | 2.81               | 1.50 | 1.69 | 2.38 |      | 0.19       | C    |   |
| 166G30   | 15   | 115V 60 Hz.    | 30 C.T.            | 0.5      | 3.25               | 1.63 | 2.00 | 2.81 |      | 0.19       | C    |   |
| 166J33   | 33   | 115V 60 Hz.    | 33 C.T.            | 1        | 3.25               | 2.00 | 2.00 | 2.81 |      | 0.19       | C    |   |
| 166K35   | 52.5 | 115V 60 Hz.    | 35 C.T.            | 1.5      | 3.69               | 2.13 | 2.31 | 3.13 |      | 0.19       | C    |   |
| 166J36   | 36   | 115V 60 Hz.    | 36 C.T.            | 1        | 3.69               | 1.88 | 2.31 | 3.13 |      | 0.19       | C    |   |
| 166E36   | 5.4  | 115V 60 Hz.    | 36 C.T.            | 0.15     | 2.38               | 1.50 | 1.38 | 2.00 |      | 0.19       | C    |   |
| 166F36   | 10.8 | 115V 60 Hz.    | 36 C.T.            | 0.3      | 2.81               | 1.63 | 1.69 | 2.38 |      | 0.19       | C    |   |

| Part No. | VA   | Primary<br>(VAC) | Secondary (R.M.S.) |       | Overall Dimensions |      |      |      |      | Mounting   |      |   |
|----------|------|------------------|--------------------|-------|--------------------|------|------|------|------|------------|------|---|
|          |      |                  | VAC                | Amps  | A                  | B    | C    | D    | E    | Dimensions | Ref  |   |
| 166F36A  | 10.8 | 117V 50/60 Hz.   | 36 C.T.            | 0.3   | 2.81               | 1.63 | 1.69 | 2.38 |      | 0.19       |      | C |
| 166G36   | 18   | 115V 60 Hz.      | 36 C.T.            | 0.5   | 3.25               | 1.63 | 2.00 | 2.81 |      | 0.19       |      | C |
| 166L42   | 84   | 115V 60 Hz.      | 42 C.T.            | 2     | 4.03               | 2.50 | 2.63 | 3.56 |      | 0.19       |      | C |
| 166J44   | 44   | 115V 60 Hz.      | 44 C.T.            | 1     | 3.69               | 2.00 | 2.31 | 3.13 |      | 0.19       |      | C |
| 166E44   | 6.6  | 115V 60 Hz.      | 44 C.T.            | 0.15  | 2.81               | 1.50 | 1.69 | 2.38 |      | 0.19       |      | C |
| 166F44   | 11   | 115V 60 Hz.      | 44 C.T.            | 0.25  | 2.81               | 1.63 | 1.69 | 2.38 |      | 0.19       |      | C |
| 166G44   | 22   | 115V 60 Hz.      | 44 C.T.            | 0.5   | 3.25               | 1.75 | 2.00 | 2.81 |      | 0.19       |      | C |
| 166M48   | 144  | 117V 50/60 Hz.   | 48 C.T.            | 3     | 3.44               | 2.98 | 4.13 | 2.75 | 2.38 | 0.20       | 0.38 | B |
| 166J50   | 50   | 115V 60 Hz.      | 50 C.T.            | 1     | 3.69               | 2.13 | 2.31 | 3.13 |      | 0.19       |      | C |
| 166L50   | 100  | 115V 60 Hz.      | 50 C.T.            | 2     | 4.50               | 2.50 | 3.00 | 4.00 |      | 0.20       |      | C |
| 166C50   | 3.75 | 115V 60 Hz.      | 50 C.T.            | 0.075 | 2.38               | 1.38 | 1.38 | 2.00 |      | 0.19       |      | C |
| 166F50   | 15   | 115V 60 Hz.      | 50 C.T.            | 0.3   | 3.25               | 1.63 | 2.00 | 2.81 |      | 0.19       |      | C |
| 166G50   | 25   | 115V 60 Hz.      | 50 C.T.            | 0.5   | 3.25               | 1.75 | 2.00 | 2.81 |      | 0.19       |      | C |
| 166G60   | 30   | 115V 60 Hz.      | 60 C.T.            | 0.5   | 3.25               | 2.00 | 2.00 | 2.81 |      | 0.19       |      | C |
| 166M72   | 216  | 117V 50/60 Hz.   | 72 C.T.            | 3     | 3.75               | 3.56 | 4.50 | 3.00 | 3.00 | 0.20       | 0.38 | B |
| 166G80   | 40   | 115V 60 Hz.      | 80 C.T.            | 0.5   | 3.69               | 1.88 | 2.31 | 3.13 |      | 0.19       |      | C |
| 166G100  | 50   | 115V 60 Hz.      | 100 C.T.           | 0.5   | 3.69               | 2.13 | 2.31 | 3.13 |      | 0.19       |      | C |
| 166F120  | 36   | 115V 60 Hz.      | 120 C.T.           | 0.3   | 3.69               | 1.88 | 2.31 | 3.13 |      | 0.19       |      | C |

Tags: power transformers, low voltage, filament, economical, single primary, insulated, center tap, chassis mount *Data subject to change without notice*

© 2024. Hammond Manufacturing Ltd. All rights reserved.

## Looking for pricing, stock, or lifecycle information?

Click below to explore more details on WIN SOURCE:

- [View 166RS on WIN SOURCE](#)
- [Hammond Manufacturing Information](#)

## Optimize Your Supply Chain with WIN SOURCE Solutions

- ✓ Global Sourcing Solution
- ✓ Obsolete Management
- ✓ Cost Control Management
- ✓ Shortage Management
- ✓ Alternative Solution
- ✓ Excess Inventory Management