



**THE DATASHEET OF
AZ756-1A-12DK**



AZ756

20 AMP MINIATURE POWER RELAY

FEATURES

- Dielectric strength 5000 Vrms
- Low cost
- 20 Amp switching — single pole contacts
- Isolation spacing greater than 8mm
- UL Class B insulation system standard
Class F available
- UL, CUR file E43203, TÜV R50156590



CONTACTS

| | |
|-------------------------------|--|
| Arrangement | SPST - N.O. |
| Ratings | Resistive load: Max. switched power: 480 W or 4000 VA Max. switched current: 20 A Max. switched voltage: 150* VDC or 277 VAC *Note: If switching voltage is greater than 30VDC, special precautions must be taken. Please contact the factory. |
| Rated Load UL, CUR | 20 A at 125 VAC Resistive, 100k cycles 16 A at 250 VAC Resistive, 100k cycles 16 A at 30 VDC Resistive, 100k cycles |
| TÜV | 16 A at 250 VAC Resistive, 100k cycles 16 A at 30 VDC Resistive, 50k cycles |
| Material | Silver tin oxide |
| Resistance | < 50 milliohms initially (24 V, 1 A voltage drop method) |

COIL

| | |
|--|---|
| Power At Pickup Voltage (typical) | 340 mW |
| Max. Continuous Dissipation | 1.5 W at 20°C (68°F) ambient 1.1 W at 40°C (104°F) ambient |
| Temperature Rise | 41°C (74°F) at nominal coil voltage |
| Temperature | Max. 130°C (266°F) |

NOTES

1. All values at 20°C (68°F).
2. Relay may pull in with less than "Must Operate" value.
3. Specifications subject to change without notice.

GENERAL DATA

| | |
|--|---|
| Life Expectancy Mechanical Electrical | Minimum operations 1 x 10 ⁷ 1 x 10 ⁵ at 16 A 240 VAC Res. |
| Operate Time (typical) | 20 ms at nominal coil voltage |
| Release Time (typical) | 10 ms at nominal coil voltage (with no coil suppression) |
| Dielectric Strength (at sea level for 1 min.) | 5000 Vrms coil to contact 1000 Vrms between open contacts |
| Insulation Resistance | 1000 megohms min. at 20°C 500 VDC 50% RH |
| Dropout | Greater than 10% of nominal coil voltage |
| Ambient Temperature Operating Storage | At nominal coil voltage -40°C (-40°F) to 85°C (185°F) -40°C (-40°F) to 130°C (266°F) |
| Vibration | 0.062" DA at 10–55 Hz |
| Shock | 10 g |
| Enclosure | P.B.T. polyester |
| Terminals | Tinned copper alloy, P.C. and Quick Connects Note: Allow suitable slack on leads when wiring, and do not subject the terminals to excessive force. |
| Max. Solder Temp. | 270°C (518°F) |
| Max. Solder Time | 5 seconds |
| Weight | 13 grams |

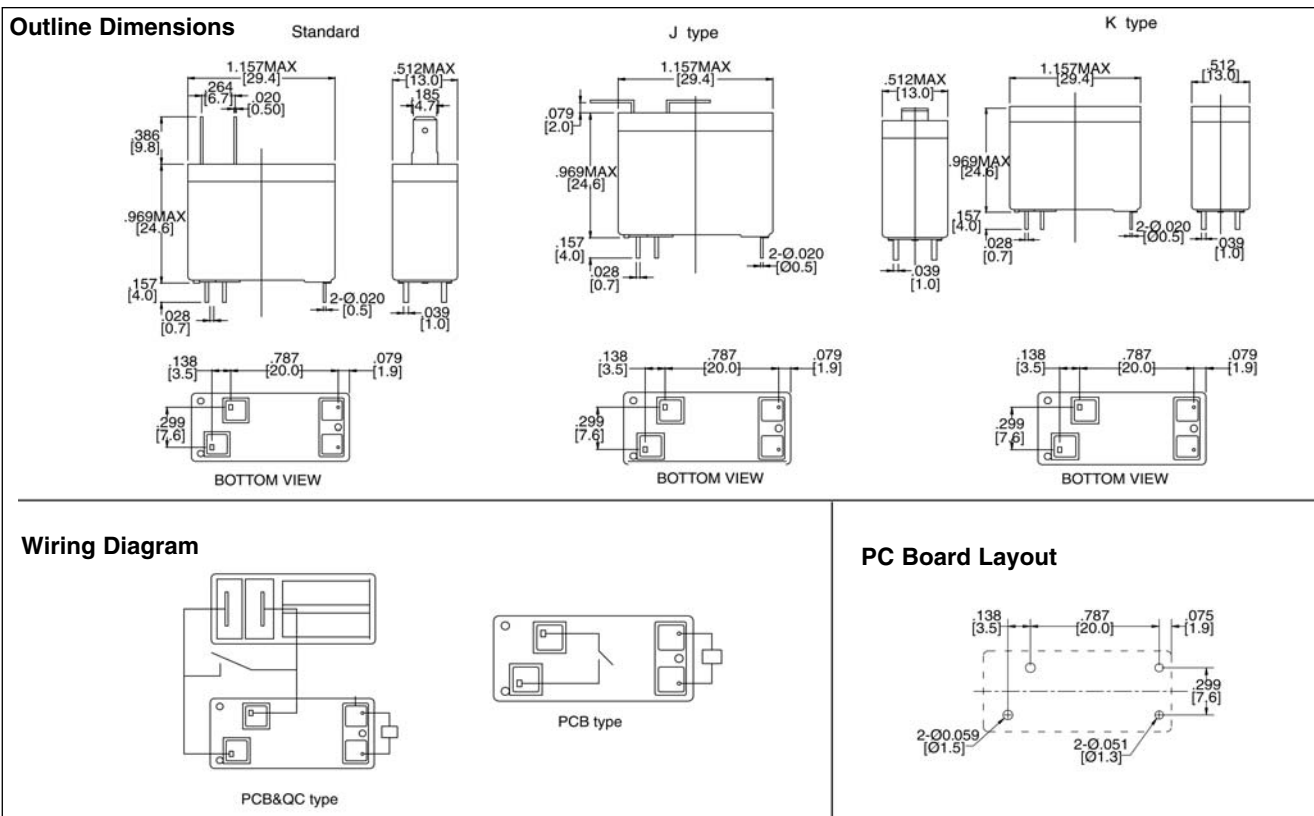
AZ756

RELAY ORDERING DATA

| COIL SPECIFICATIONS | | | | ORDER NUMBER* | | |
|---------------------|------------------|---------------------|----------------------------|---------------|---------------|---------------|
| Nominal Coil VDC | Must Operate VDC | Max. Continuous VDC | Coil Resistance $\pm 10\%$ | Vertical QC | Horizontal QC | No QC |
| 5 | 4.0 | 8.4 | 47 | AZ756-1A-5D | AZ756-1A-5DJ | AZ756-1A-5DK |
| 6 | 4.8 | 10.1 | 68 | AZ756-1A-6D | AZ756-1A-6DJ | AZ756-1A-6DK |
| 9 | 7.2 | 15.3 | 155 | AZ756-1A-9D | AZ756-1A-9DJ | AZ756-1A-9DK |
| 12 | 9.6 | 20.1 | 270 | AZ756-1A-12D | AZ756-1A-12DJ | AZ756-1A-12DK |
| 18 | 14.4 | 30.5 | 620 | AZ756-1A-18D | AZ756-1A-18DJ | AZ756-1A-18DK |
| 24 | 19.2 | 40.6 | 1100 | AZ756-1A-24D | AZ756-1A-24DJ | AZ756-1A-24DK |
| 48 | 38.4 | 81.2 | 4400 | AZ756-1A-48D | AZ756-1A-48DJ | AZ756-1A-48DK |

* Add suffix "F" for Class F.

MECHANICAL DATA



Dimensions in inches with metric equivalents in parentheses. Tolerance: $\pm .010$ "

AMERICAN ZETTLER, INC.

1/29/13

PHONE: (949) 831-5000

www.azettler.com

E-MAIL: SALES@AZETTLER.COM

This specification provides an overview of the most significant part features. Any individual applications and operating conditions are not taken into consideration. It is recommended to test the product under application conditions. Responsibility for the application remains with the customer. Proper operation and service life cannot be guaranteed if the part is operated outside the specified limits.

Looking for pricing, stock, or lifecycle information?

Click below to explore more details on WIN SOURCE:

 [View AZ756-1A-12DK on WIN SOURCE](#)

 [American Zettler, Inc. Information](#)

Optimize Your Supply Chain with WIN SOURCE Solutions

-  Global Sourcing Solution
-  Obsolete Management
-  Cost Control Management
-  Shortage Management
-  Alternative Solution
-  Excess Inventory Management