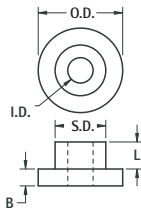




**THE DATASHEET OF**  
**3101**



# NYLON SHOULDER WASHER/BUSHINGS

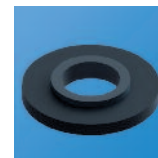
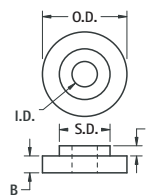


**MATERIAL:** Nylon 6/6 per ASTM D4066

CAT. NO.	L	O.D.	B	I.D.	S.D.	SCREW SIZE
7680	.025 (.64)	.260 (6.6)	.030 (.76)	.095 (2.4)	.154 (3.9)	#2
3051	.125 (3.2)	.181 (4.6)	.047 (1.2)	.090 (2.3)	.120 (3.1)	
3101	.187 (4.8)	.181 (4.6)	.047 (1.2)	.090 (2.3)	.120 (3.1)	
3052	.250 (6.4)	.181 (4.6)	.047 (1.2)	.090 (2.3)	.120 (3.1)	
3049*	.031 (.79)	.218 (5.5)	.040 (1.0)	.115 (2.9)	.135 (3.4)	#4
7681	.047 (1.2)	.250 (6.4)	.032 (.81)	.115 (2.9)	.185 (4.7)	
3053	.093 (2.4)	.235 (6.0)	.047 (1.2)	.115 (2.9)	.145 (3.7)	
3102	.125 (3.2)	.235 (6.0)	.047 (1.2)	.115 (2.9)	.145 (3.7)	
3103	.187 (4.7)	.235 (6.0)	.047 (1.2)	.115 (2.9)	.145 (3.7)	
340	.250 (6.4)	.235 (6.0)	.047 (1.2)	.115 (2.9)	.145 (3.7)	
7682	.032 (.81)	.385 (9.8)	.062 (1.57)	.145 (3.7)	.240 (6.1)	#6
7683	.032 (.81)	.250 (6.4)	.062 (1.57)	.140 (3.6)	.187 (4.7)	
7684	.032 (.81)	.312 (7.9)	.062 (1.57)	.140 (3.6)	.187 (4.7)	
3054	.125 (3.2)	.290 (7.4)	.047 (1.19)	.140 (3.6)	.170 (4.3)	
3104	.187 (4.7)	.290 (7.4)	.047 (1.19)	.140 (3.6)	.170 (4.3)	
341	.250 (6.4)	.290 (7.4)	.047 (1.19)	.140 (3.6)	.170 (4.3)	
3055	.500 (12.7)	.290 (7.4)	.047 (1.19)	.140 (3.6)	.170 (4.3)	
7685	.032 (.81)	.375 (9.5)	.032 (.81)	.171 (4.3)	.250 (6.4)	
3056	.140 (3.6)	.344 (8.7)	.062 (1.57)	.171 (4.3)	.205 (5.2)	
3105	.250 (6.4)	.344 (8.7)	.062 (1.57)	.171 (4.3)	.205 (5.2)	
342	.375 (9.5)	.344 (8.7)	.062 (1.57)	.171 (4.3)	.205 (5.2)	
3106	.500 (12.7)	.344 (8.7)	.062 (1.57)	.171 (4.3)	.205 (5.2)	
7686	.032 (.81)	.375 (9.5)	.062 (1.57)	.196 (5.0)	.308 (7.8)	#10
3107	.093 (2.36)	.438 (11.1)	.062 (1.57)	.200 (5.1)	.260 (6.6)	
3108	.250 (6.4)	.399 (10.1)	.062 (1.57)	.200 (5.1)	.260 (6.6)	
3057	.500 (12.7)	.399 (10.1)	.062 (1.57)	.200 (5.1)	.260 (6.6)	
3058	.750 (19.1)	.399 (10.1)	.062 (1.57)	.200 (5.1)	.260 (6.6)	
7687	.032 (.81)	.437 (11.1)	.032 (.81)	.253 (6.4)	.310 (7.9)	.250-20
7688	.078 (1.98)	.492 (12.7)	.032 (.81)	.260 (6.7)	.312 (7.9)	
3059	.187 (4.7)	.513 (13.0)	.062 (1.57)	.260 (6.7)	.312 (7.9)	
3109	.250 (6.4)	.513 (13.0)	.062 (1.57)	.260 (6.7)	.312 (7.9)	
3110	.375 (9.5)	.513 (13.0)	.062 (1.57)	.260 (6.7)	.312 (7.9)	
3060	.500 (12.7)	.513 (13.0)	.062 (1.57)	.260 (6.7)	.312 (7.9)	

\* Black

# FIBRE SHOULDER WASHERS



**MATERIAL:** Fibre, Commercial Grade per ASTM D710

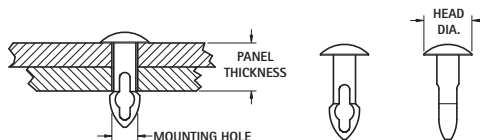
CAT. NO.	L	O.D.	B	I.D.	S.D.	SCREW SIZE
3229	.025 (.64)	.250 (6.4)	.047 (1.2)	.093 (2.4)	.123 (3.1)	#2
3061	.025 (.64)	.250 (6.4)	.047 (1.2)	.093 (2.4)	.156 (4.0)	
344	.015 (.38)	.312 (7.9)	.062 (1.57)	.125 (3.2)	.203 (5.2)	#4
343	.025 (.64)	.312 (7.9)	.062 (1.57)	.125 (3.2)	.203 (5.2)	
3062	.031 (.79)	.250 (6.4)	.031 (.79)	.115 (2.9)	.187 (4.7)	
3230	.031 (.79)	.281 (7.1)	.062 (1.57)	.115 (2.9)	.175 (4.4)	
3231	.031 (.79)	.312 (7.9)	.062 (1.57)	.120 (3.1)	.180 (4.6)	#6
4698	.031 (.79)	.250 (6.4)	.062 (1.57)	.140 (3.6)	.187 (4.7)	
3064	.031 (.79)	.312 (7.9)	.062 (1.57)	.140 (3.6)	.187 (4.7)	
3232	.031 (.79)	.375 (9.5)	.062 (1.57)	.140 (3.6)	.210 (5.3)	
3233	.031 (.79)	.375 (9.5)	.062 (1.57)	.140 (3.6)	.240 (6.1)	
3234	.031 (.79)	.500 (12.7)	.062 (1.57)	.140 (3.6)	.240 (6.1)	
3065	.031 (.79)	.375 (9.5)	.062 (1.57)	.170 (4.3)	.246 (6.2)	#8
3066	.031 (.79)	.417 (10.6)	.062 (1.57)	.170 (4.3)	.210 (5.3)	
3235	.031 (.79)	.312 (7.9)	.062 (1.57)	.170 (4.3)	.218 (5.5)	
3236	.031 (.79)	.375 (9.5)	.062 (1.57)	.170 (4.3)	.215 (5.5)	
3237	.031 (.79)	.500 (12.7)	.062 (1.57)	.170 (4.3)	.240 (6.1)	
4702	.031 (.79)	.375 (9.5)	.062 (1.57)	.194 (4.9)	.308 (7.8)	
3238	.031 (.79)	.375 (9.5)	.062 (1.57)	.194 (4.9)	.240 (6.1)	
3239	.031 (.79)	.500 (12.7)	.062 (1.57)	.196 (5.0)	.240 (6.1)	
4711	.031 (.79)	.500 (12.7)	.062 (1.57)	.253 (6.4)	.308 (7.8)	
3240	.031 (.79)	.625 (15.9)	.062 (1.57)	.265 (6.7)	.359 (9.1)	.250-20
3069	.031 (.79)	.625 (15.9)	.062 (1.57)	.385 (9.8)	.498 (12.6)	.375-24
3241	.031 (.79)	.750 (19.1)	.062 (1.57)	.385 (9.8)	.498 (12.6)	

WASHERS & CLIPS

# KEY HOLE CLIPS



- Key hole design allows for easy installation of the fastener.
- Can be hand installed, no tooling required
- One piece design, can be removed and reused with no missing parts
- Bullet tip helps to align panels during the assembly process
- Tapered locking shank provide a tight fit between the two panels
- Domed head provides a clean appearance to top panel



**MATERIAL:** Nylon 6/6 UL Rated 94V-2, Black

CAT. NO.	PANEL THICKNESS	HOLE SIZE	HEAD DIA.
3300	.093 (2.4)	.125 (3.2)	.250 (6.4)
3301	.125 (3.2)		
3302	.156 (4.0)		
3303	.187 (4.8)		
3305	.250 (6.4)		
3310	.093 (2.4)	.158 (4.0)	.312 (7.9)
3311	.125 (3.2)		
3312	.156 (4.0)		
3313	.187 (4.8)		
3315	.250 (6.4)		
3320	.125 (3.2)		
3321	.156 (4.0)	.187 (4.8)	.312 (7.9)
3322	.187 (4.8)		
3324	.250 (6.4)		
3330	.156 (4.0)		
3331	.187 (4.8)		
3333	.250 (6.4)	.219 (5.6)	.344 (8.7)
3335	.312 (7.9)		

## Looking for pricing, stock, or lifecycle information?

Click below to explore more details on WIN SOURCE:

- ⊖ [View 3101](#) on WIN SOURCE
- ⊖ [Keystone Electronics](#) Information

## Optimize Your Supply Chain with WIN SOURCE Solutions

- ✓ Global Sourcing Solution
- ✓ Obsolete Management
- ✓ Cost Control Management
- ✓ Shortage Management
- ✓ Alternative Solution
- ✓ Excess Inventory Management