

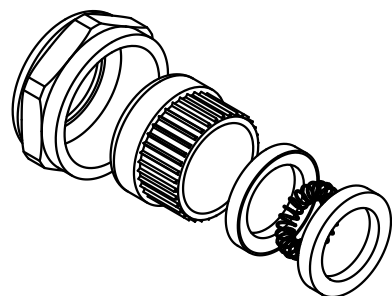
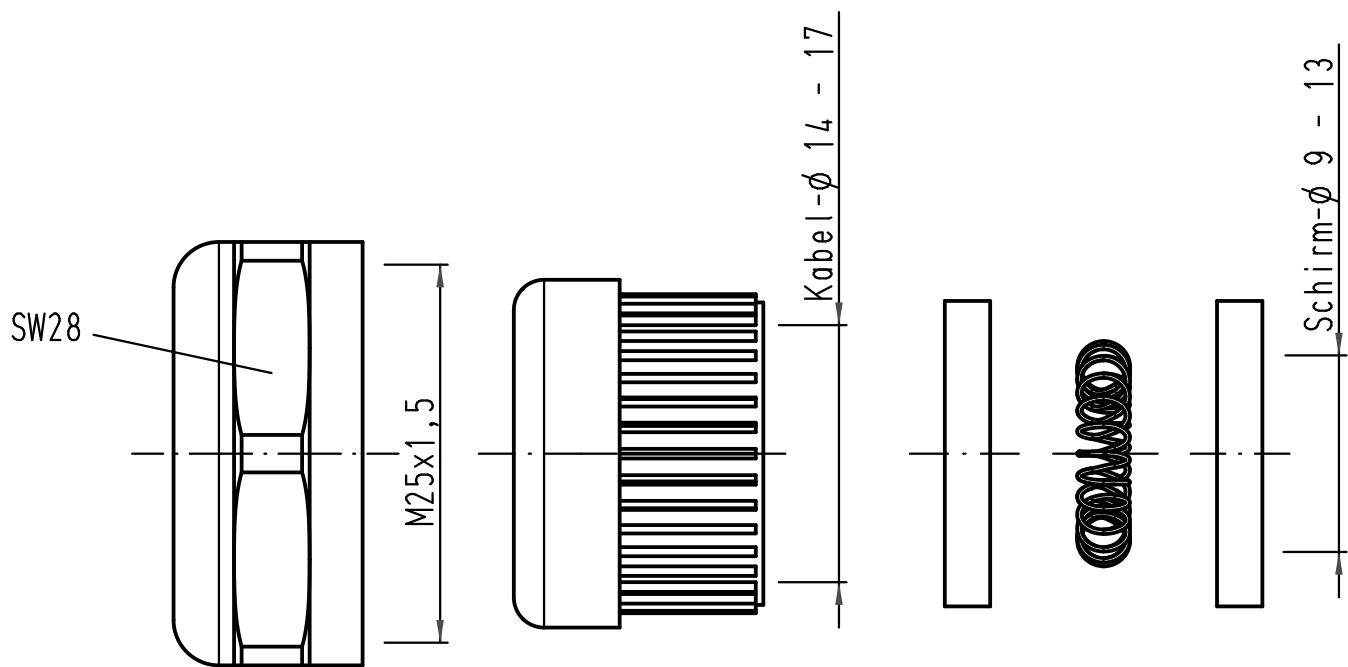
1 2 3 4 5 6

A

B

C

D



Für EMV Tüllengehäuse - Metall
for EMC hoods - metal

All Dimensions in mm Original Size DIN A 4		Techn. Character.			Nicht tolerierte Maße/Free size tolerances	
			Dat.	Name	Maßstab/Scale 2:1	Han-Compact EMV Halbverschraubung M25 EMC half cable protection M25
			Detail.	10.02.10 Ho		
			Insp.	Sch		
			Stand.			
A			HARTING Electric GmbH & Co. KG			TB 19 62 000 5058
Mod.	Dat.	Name	D-32339 Espelkamp			
					Sub. TB 19 62 000 5058 v. 20.01.00	
					Blatt/page	

Looking for pricing, stock, or lifecycle information?

Click below to explore more details on WIN SOURCE:

 [View 19620005058](#) on WIN SOURCE

 [HARTING](#) Information

Optimize Your Supply Chain with WIN SOURCE Solutions

-  Global Sourcing Solution
-  Obsolete Management
-  Cost Control Management
-  Shortage Management
-  Alternative Solution
-  Excess Inventory Management