



**THE DATASHEET OF  
1404548**



# Control cabinet feed-through - VS-BH-M12FSX-10G-RJ45/90 - 1404548

Please be informed that the data shown in this PDF Document is generated from our Online Catalog. Please find the complete data in the user's documentation. Our General Terms of Use for Downloads are valid (<http://download.phoenixcontact.com>)



Control cabinet feed-through, M12, 8-pos., X-encoded to RJ45 socket, socket input 90°, IP65/67



**Ethernet**

## Key commercial data

Packing unit	0
Minimum order quantity	1
GTIN	 4 046356 699419
Custom tariff number	85366990
Country of origin	GERMANY

## Technical data

### Mechanical characteristics

Number of positions	8
Insertion/withdrawal cycles	≥ 100
Cable exit	angled
Color	black
Ambient temperature (operation)	-25 °C ... 85 °C

### Material data

Inflammability class according to UL 94	V0
Housing material	PA
Contact material	Copper alloy
Degree of protection	IP65/67

### Electrical characteristics

Number of positions	8
Nominal voltage $U_N$	60 V

# Control cabinet feed-through - VS-BH-M12FSX-10G-RJ45/90 - 1404548

## Technical data

### Electrical characteristics

Nominal current $I_N$	0.5 A
Transmission characteristics (category)	CAT6 <sub>A</sub>
Rated current	1 A

## Classifications

### ETIM

ETIM 4.0	EC001121
ETIM 5.0	EC002641

### UNSPSC

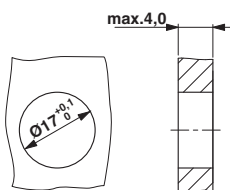
UNSPSC 11	31261501
UNSPSC 12.01	31261501
UNSPSC 13.2	31261501
UNSPSC 6.01	31261501
UNSPSC 7.0901	31261501

### eCl@ss

eCl@ss 4.0	272607xx
eCl@ss 4.1	27260701
eCl@ss 5.0	27260701
eCl@ss 5.1	27260701
eCl@ss 6.0	27279220
eCl@ss 7.0	27440103

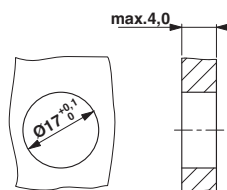
## Drawings

### Dimensioned drawing



Panel cutout

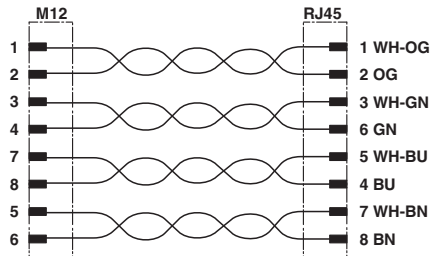
### Dimensioned drawing



Panel cutout



# Control cabinet feed-through - VS-BH-M12FSX-10G-RJ45/90 - 1404548

## Circuit diagram



## Looking for pricing, stock, or lifecycle information?

Click below to explore more details on WIN SOURCE:

-  [View 1404548 on WIN SOURCE](#)
-  [Phoenix Contact Information](#)

## Optimize Your Supply Chain with WIN SOURCE Solutions

-  Global Sourcing Solution
-  Obsolete Management
-  Cost Control Management
-  Shortage Management
-  Alternative Solution
-  Excess Inventory Management