



**THE DATASHEET OF**  
**1279**

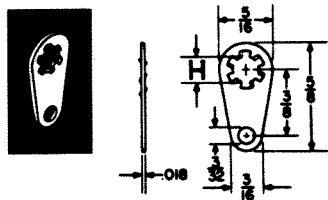


# LUGS & TERMINALS

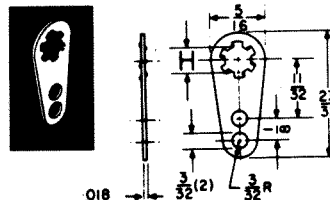
Designers' Choice



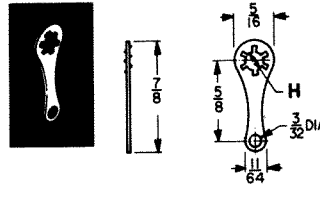
## LOCKWASHER TERMINAL LUGS



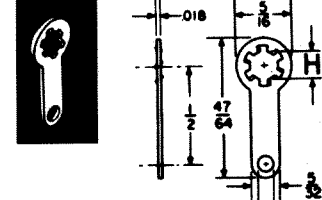
CAT. NO.	"H" DIM	MATERIAL
908	.120 (#4)	.018 Brass, Tin Plate
914	.140 (#6)	
915	.171 (#8)	



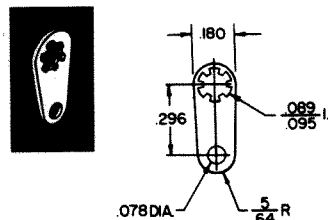
CAT. NO.	"H" DIM	MATERIAL
910	.120 (#4)	.018 Brass, Tin Plate
918	.140 (#6)	
906	.171 (#8)	



CAT. NO.	"H" DIM	MATERIAL
903	.120 (#4)	.018 Brass, Tin Plate
904	.140 (#6)	
905	.171 (#8)	

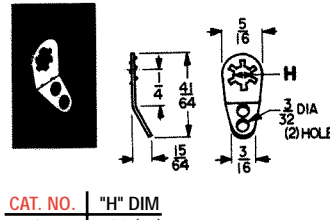


CAT. NO.	"H" DIM	MATERIAL
909	.120 (#4)	.018 Brass, Tin Plate
916	.140 (#6)	
917	.171 (#8)	

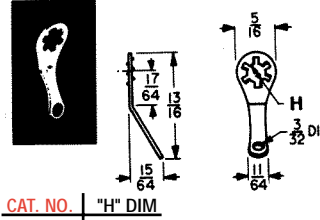


CAT. NO. 907

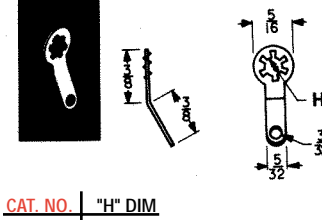
MATERIAL: .013 Brass, Tin Plate



CAT. NO.	"H" DIM	MATERIAL
7311	.120 (#4)	.018 Brass, Tin Plate
7312	.140 (#6)	
7313	.171 (#8)	

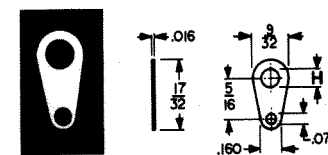


CAT. NO.	"H" DIM	MATERIAL
7317	.120 (#4)	.018 Brass, Tin Plate
7318	.140 (#6)	
7319	.171 (#8)	

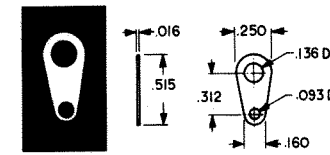


CAT. NO.	"H" DIM	MATERIAL
7314	.120 (#4)	.018 Brass, Tin Plate
7315	.140 (#6)	
7316	.171 (#8)	

## SOLDER TERMINAL LUGS

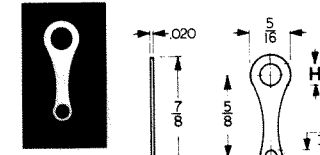


CAT. NO.	"H" DIM	MATERIAL
7328	.120 (#4)	.015 Brass, Tin Plate
7329	.140 (#6)	
7330	.171 (#8)	

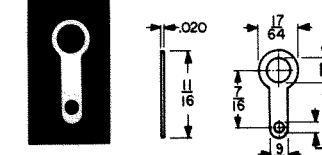


CAT. NO. 4004

MATERIAL: .016 Brass, Tin Plate

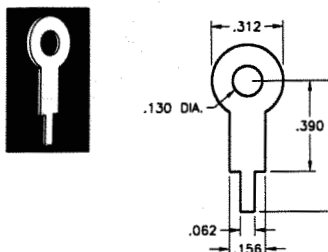


CAT. NO.	"H" DIM	MATERIAL
7331	.120 (#4)	.020 Brass, Tin Plate
7332	.140 (#6)	
7333	.171 (#8)	



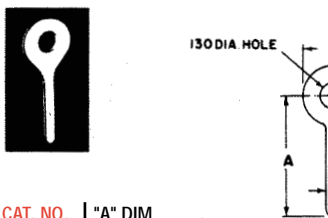
CAT. NO.	"H" DIM	MATERIAL
7325	.120 (#4)	.020 Brass, Tin Plate
7326	.140 (#6)	
7327	.171 (#8)	

## TERMINAL LUGS



CAT. NO. 680

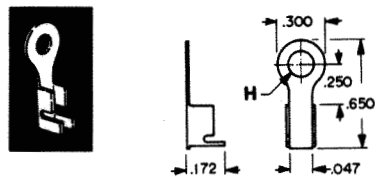
MATERIAL: .015 Brass, Tin Plate



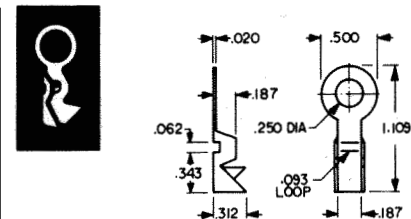
CAT. NO.	"A" DIM	MATERIAL
4000	.500	.020 Brass, Tin Plate
4001	.562	
4002	.750	
4003	1.000	

MATERIAL: .020 Brass, Tin Plate

## CRIMP TERMINAL LUGS



CAT. NO.	"H" DIM	MATERIAL
1274	.120 (#4)	.020 Brass, Tin Plate
1275	.140 (#6)	
1276	.171 (#8)	



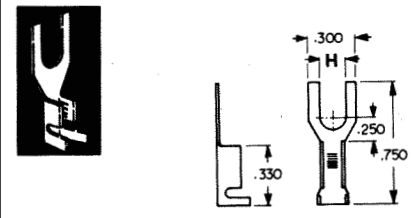
CAT. NO. 7339

MATERIAL: .020 Copper, Tin Plate

### QUICK-FIT FEMALES



CAT. NO.	"A" DIM TAB SIZE	"B" DIM LENGTH	AWG SIZE	MAT'L THICK
1252	.110 X .020	.640	18-22	.010
1264	.187 X .020	.576	16-22	.013
4469	.205 X .020	.640	16-20	.013
4470	.250 X .032	.750	16-20	.016



CAT. NO.	"H" DIM	MATERIAL
1278	.140 (#6)	.020 Brass, Tin Plate
1279	.171 (#8)	

MATERIAL: .020 Brass, Tin Plate

## Looking for pricing, stock, or lifecycle information?

Click below to explore more details on WIN SOURCE:

- ⊖ [View 1279](#) on WIN SOURCE
- ⊖ [Keystone Electronics](#) Information

## Optimize Your Supply Chain with WIN SOURCE Solutions

- ✓ Global Sourcing Solution
- ✓ Obsolete Management
- ✓ Cost Control Management
- ✓ Shortage Management
- ✓ Alternative Solution
- ✓ Excess Inventory Management