



**THE DATASHEET OF
10090099-S094VLF**



REMARK:

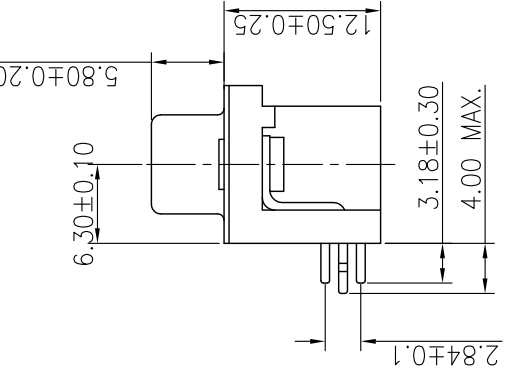
1.CHARACTERISTICS:

RATED VOLTAGE: 250V
 RATED CURRENT: 5A
 CONTACT RESISTANCE: 50mΩ
 INSULATION RESISTANCE: 1000MΩ
 DIELECTRIC STRENGTH: 500V/mm
 OPERATING TEMPERATURE: -40°C to 105°C
 INSERTION/EXTRACT SPEED: 0.1s
 MATING/UNMATING CYCLES: 1000

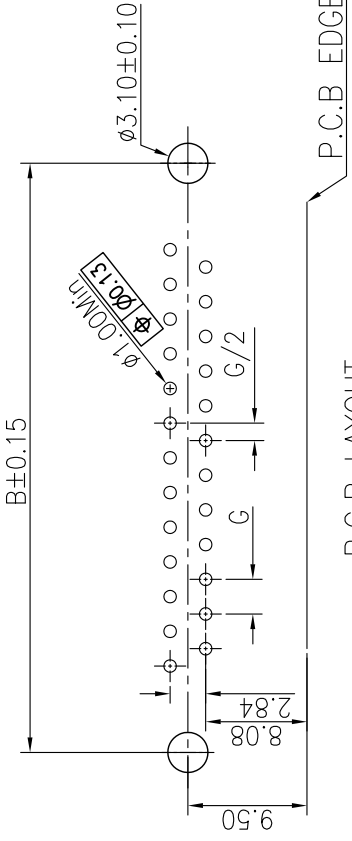
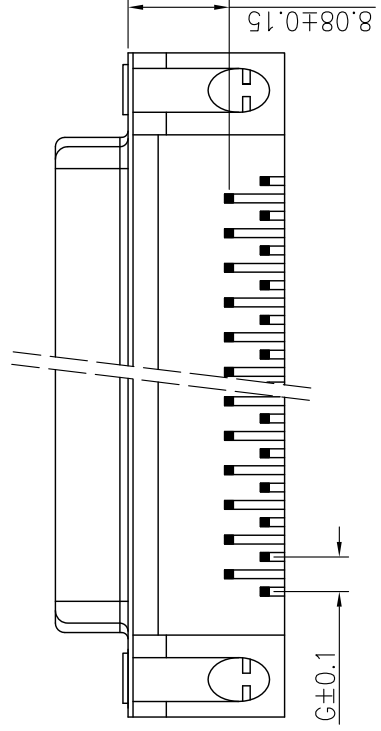
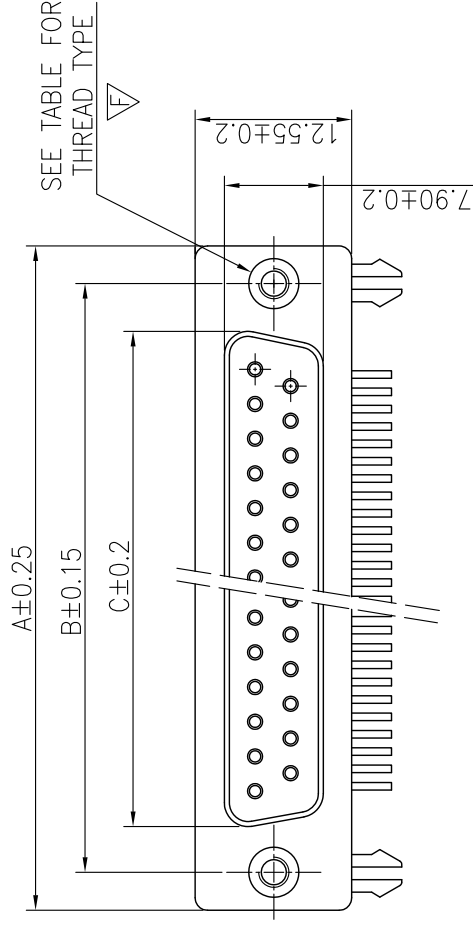
2.MATERIAL:

INSULATORS: GLASS
 CONTACTS: COPPER
 SHELL: STEEL, 100μ" 50μ"
 BOARD LOCK: COPPER

3. PART NUMBER DESCRIP



SERIAL NUMBER
 TYPE: 09: 9--P
 15: 15--
 25: 25--
 37: 37--



mat'l. code		tolerances unless otherwise specified	
ltr	ecn no	dr	date
A	T09-1033	JH	3/12/09
B	T09-1044	JH	4/2/09
C	ELX-1-13433	AB	9/11/12
		dr	JASON HSU 3/
		enrg	JASON HSU 3/
		chr	ALIAS BABU 9/
		appd	MITHUN PAUL 9/
sheet index	revision	C	C
	sheet	1	2

ACAD

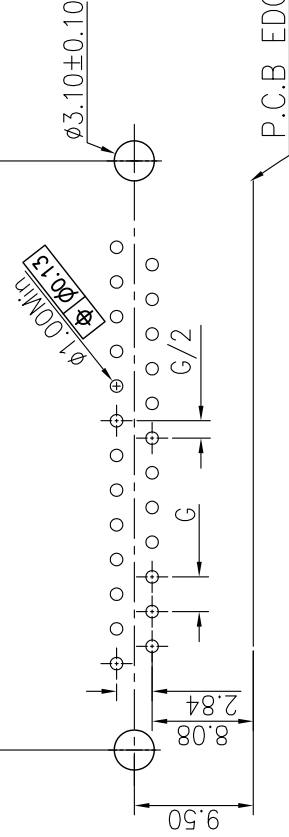
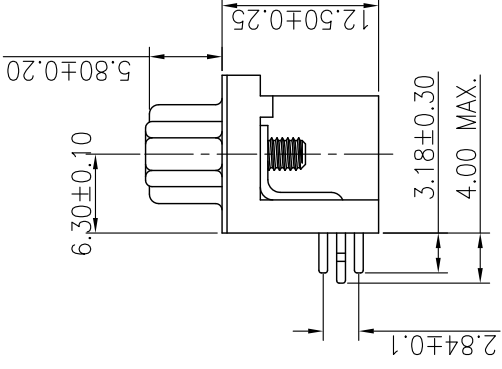
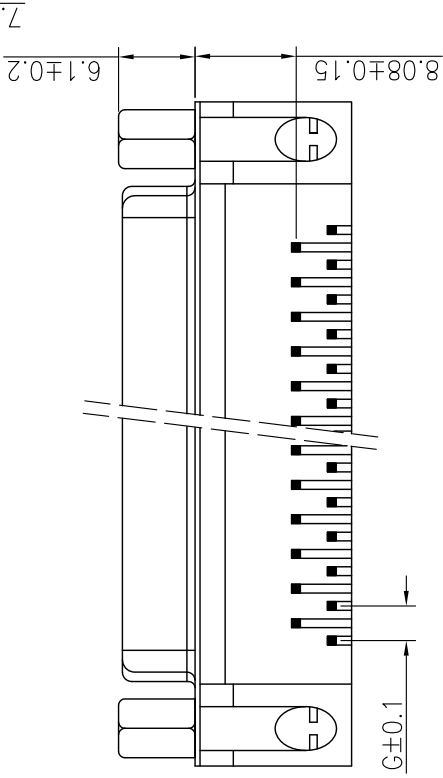
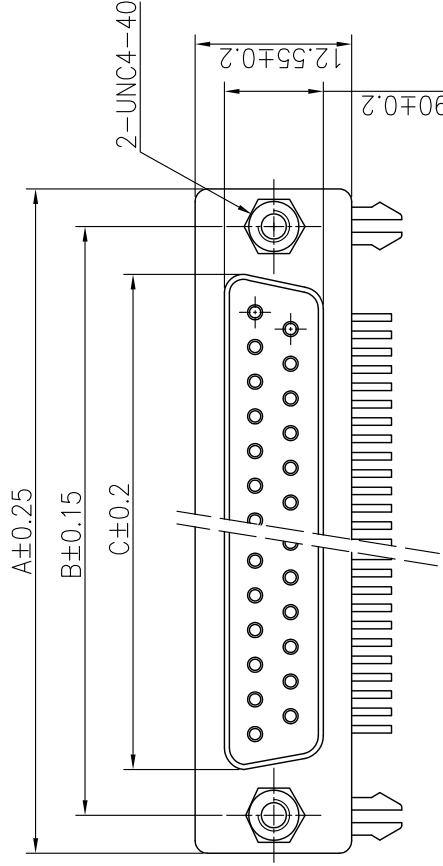
PDS: Rev

A

B



1 | 2



P.C.B LAYOUT
t: 1.6±0.1MM

P.C.B EDGE

1 | 2

REMARK:

- CHARACTERISTICS:
 1. RATED VOLTAGE: 250V
 2. RATED CURRENT: 5AMP
 3. CONTACT RESISTANCE:
 4. INSULATION RESISTAN
 5. DIELECTRIC STRENGTH
 6. OPERATING TEMPERATI
 7. INSERTION/EXTRACTIO
 8. MATING/UNMATING CYC

2.MATERIAL:

- INSULATORS: GLASS-F
 2. CONTACTS: COPPER AL

- SHELL: STEEL,100u" Mir
 2. BOARD LOCK :COPPER /
 3. SCREW LOCK: COPPER

3. PART NUMBER DESCR

SERIES N

TYPI
S: SC

NUMBER

- 09: 9-PIN
- 15: 15-PIN
- 25: 25-PIN
- 37: 37-PIN

POS.	NUMBER
09P	11
15P	11
25P	11
37P	11

tolerances unless
otherwise specifie

mat'l. code

ltr	ecn no	dr	date	linear	angles	dr	JASON HSU	JASON HSU	JASON HSU	ALI AS BABU	PAULI 9/	MITHUN PAULI 9/
C												

B

All rights strictly reserved. Reproduction or issue to third parties in any form whatever is not permitted without written authority from the proprietor. Property of FCI. Copyright FCI.



A



Tous droits strictement reserves. Reproduction ou communication a des tiers interdite sous quelque forme que ce soit sans autorisation ecrite du proprietaire. Propriete de c FCI. Droits de reproduction FCI.

ACAD

PDS: Rev

Looking for pricing, stock, or lifecycle information?

Click below to explore more details on WIN SOURCE:

-  [View 10090099-S094VLF on WIN SOURCE](#)
-  [Amphenol Information](#)

Optimize Your Supply Chain with WIN SOURCE Solutions

-  Global Sourcing Solution
-  Obsolete Management
-  Cost Control Management
-  Shortage Management
-  Alternative Solution
-  Excess Inventory Management