



THE DATASHEET OF
0436-0-15-15-03-27-10-0



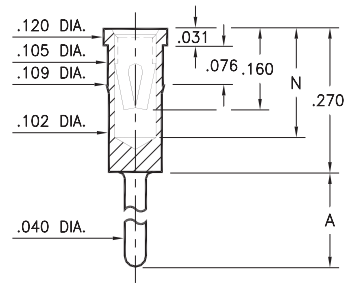
PIN RECEPTACLES

**FOR .040" - .060" DIAMETER PINS (#03 CONTACT)
FOR .059" - .063" DIAMETER PINS (#42 CONTACT)**

0433/8433

X433-0-15-XX-03-XX-04-0

Press-fit in .106 mounting hole

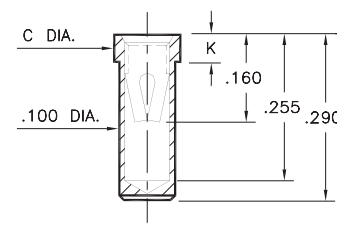


Basic Part Number	Length A	Depth N
0433-0	.120	.205
8433-0	.315	.230

0435/0436

043X-0-15-XX-03-XX-10-0

Solder mount in .102 min. mounting hole
Also available on 24mm wide carrier tape:
950 parts per 13" reel
See page 194.17 for Tape & Reel details

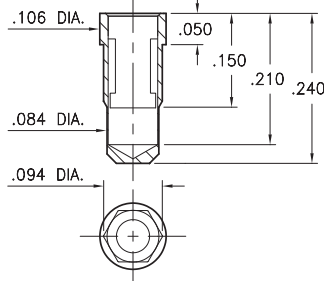


Basic Part Number	Dia. C	Length K
0435-0	.118	.050
0436-0	.125	.070

0342

0342-0-15-XX-42-XX-10-0

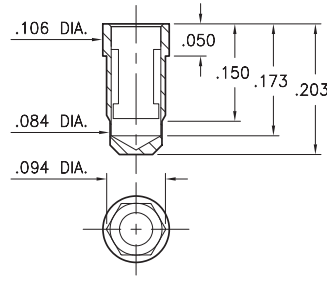
Hex press-fit in .090±.002 plated through-hole



6342

6342-0-15-XX-42-XX-10-0

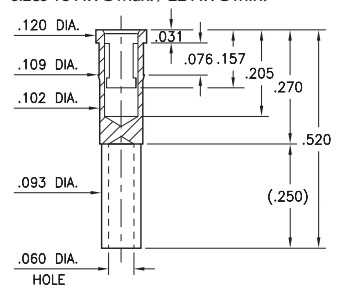
Hex press-fit in .090±.002 plated through-hole



6433

6433-0-19-XX-42-XX-10-0

Press-fit in .106 mounting hole
Wire crimp termination. Accepts wire sizes 18 AWG Max. / 22 AWG Min.



Mechanical Data #42 Contact:

Insertion/Extraction Force with a Ø.061 (nominal) pin:

First Cycle		2nd & Subsequent Cycles	
Insertion Force	Extraction Force	Insertion Force	Extraction Force
20N	6N	10N	6N

Compliance Test (the "spring back" characteristic of the contact to accept Ø.059 small pin after insertion of a Ø.063 large pin) :

Initial Cycle with Ø.059 pin		Second Cycle with Ø.063 pin		Third Cycle with Ø.059 pin	
Ins. Force	Ext. Force	Ins. Force	Ext. Force	Ins. Force	Ext. Force
18N	6N	22N	7N	3N	2N

(Insertion/Extraction Forces are in Newtons and measured with polished steel gage pins having elliptical shaped tips).

SPECIFICATIONS:

Shell Material: Brass Alloy 360, 1/2 Hard

Contact Material: Beryllium Copper Alloy 172, HT

Dimensions: Inches

Tolerances On: Lengths: ±.005
Diameters: ±.002
Angles: ± 2°



ORDER CODE: XXXX - X - XX - XX - XX - XX - XX - 0

BASIC PART #

SPECIFY SHELL FINISH:

- 01 200 μ" TIN/LEAD OVER NICKEL
- ◆ 80 200 μ" TIN OVER NICKEL (RoHS)
- ◆ 15 10 μ" GOLD OVER NICKEL (RoHS)

SPECIFY CONTACT FINISH:

- 01 200 μ" TIN/LEAD OVER NICKEL
- ◆ 80 200 μ" TIN OVER NICKEL (RoHS)
- ◆ 27 30 μ" GOLD OVER NICKEL (RoHS)

SELECT CONTACT:

#03 or #42 CONTACT (DATA ON PAGE 259)



Looking for pricing, stock, or lifecycle information?

Click below to explore more details on WIN SOURCE:

- ⊖ [View 0436-0-15-15-03-27-10-0 on WIN SOURCE](#)
- ⊖ [Mill-Max Manufacturing Corp.](#) Information

Optimize Your Supply Chain with WIN SOURCE Solutions

- ✓ Global Sourcing Solution
- ✓ Obsolete Management
- ✓ Cost Control Management
- ✓ Shortage Management
- ✓ Alternative Solution
- ✓ Excess Inventory Management