



THE DATASHEET OF ACJS-MHOM

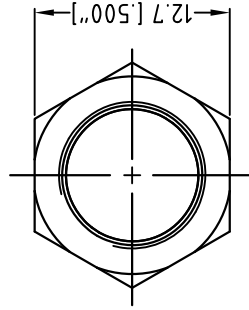
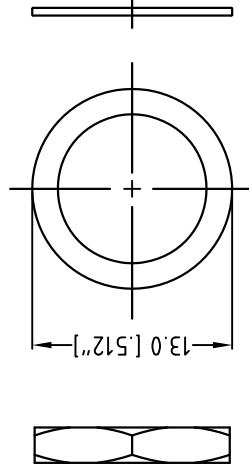
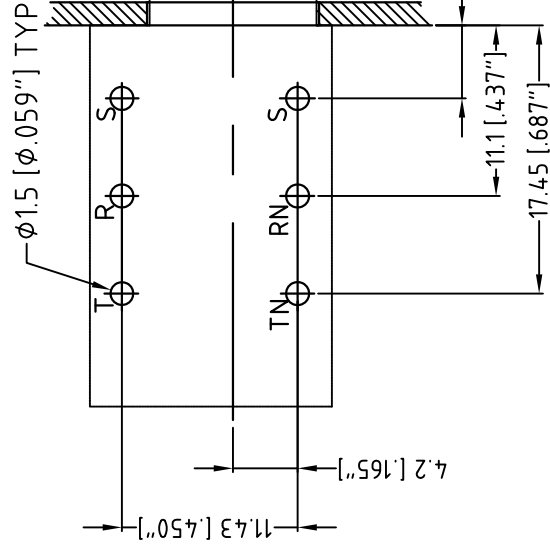
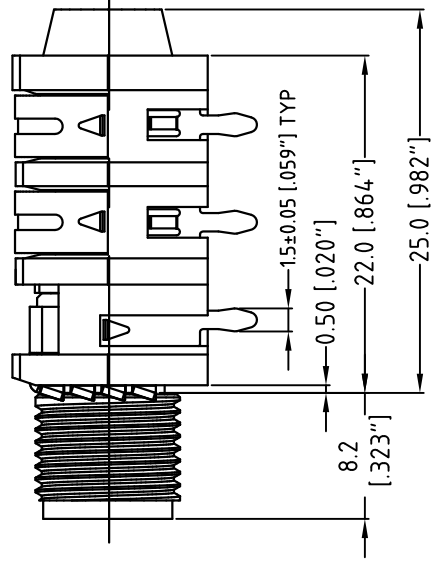


1

2

3

4

**METAL NUT****METAL WASHER**

E

NOTE: NUT TO CONNECTOR ASSEMBLY - MAX TORQUE FORCE IS 1.

RECOMMENDED PCB - LAYOUT

TOLERANCE: ±0.05mm [0.002"]

PART NO.

ACJM-LHOM

ACJS-LHOM

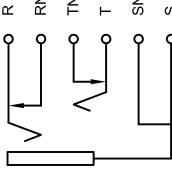
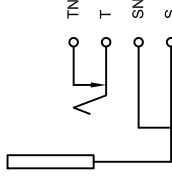
NO NUT & WASHER

ACJM-MHOM

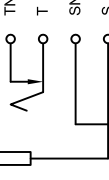
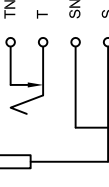
ACJS-MHOM

METAL NUT & WASHER

SCHEMATIC



SCHEMATIC



HARDWARE

1

2

3

4

UNLESS OTHERWISE SPECIFIED

TOLERANCE TO BE

LINEAR

ANGULAR

X ± 0.5

X ± 1°

X.X ± 0.2

X.X ± 30°

X.XX ± 0.1

X.XX ± 15°

BREAK ALL SHARP EDGES

AND REMOVE ALL BURRS

DO NOT SCALE

DIMENSIONS IN MILLIMETRES

THIS DOCUMENT IS THE PROPERTY OF AMPHENOL AUSTRALIA PTY. LTD. NO PART THEREOF MAY BE REPRODUCED AND USED WITHOUT THE PRIOR WRITTEN CONSENT OF THE OWNER

CAD FILE: 550104.11000112

MATERIAL: SEE NOTES

FINISH: SEE NOTES

DRAWN: M.N.H

CHECKED: M.H.

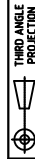
APPROVED: P.M.

DATE: 06-02-03

DATE: 27-03-03

DATE: 27-03-03

PART NO: RET-112





THIRD ANGLE PROJECTION

SCALE: 1:1

Looking for pricing, stock, or lifecycle information?

Click below to explore more details on WIN SOURCE:

-  [View ACJS-MHOM on WIN SOURCE](#)
-  [Amphenol Information](#)

Optimize Your Supply Chain with WIN SOURCE Solutions

-  Global Sourcing Solution
-  Obsolete Management
-  Cost Control Management
-  Shortage Management
-  Alternative Solution
-  Excess Inventory Management